

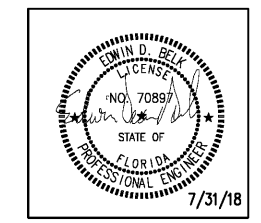
**CIVIL:**  
Choctaw Engineering, Inc.  
112 Truxton Avenue  
Fort Walton Beach, FL 32547  
Phone: (850) 862-6211  
Fax: (850) 863-8059  
Email: msiner@choctaweng.com

**STRUCTURAL:**  
Whimsical Engineering Services, LLC  
122 Nut Tree Court  
Lexington, SC 29074  
Phone: (803) 957-4008  
Email: bill@weslex.com

**MEP:**  
Allied Consulting Engineers  
2905-D Queen City Drive  
Charlotte, NC 28208  
Phone: (704) 399-3943  
Email: dbelk@allied-engineers.com

REVISIONS		
No.	Date	Description

Information contained on this drawing and in all digital files associated is authorized for use on the project named herein only and is the property of MISHRA ARCHITECTURE PLLC and may not be reproduced in any manner without express written or verbal permission from authorized individuals. Original drawing is 24"x36" and scales are as indicated © 2008 MISHRA ARCHITECTURE PLLC



**KEY PLAN**

VTM Hotels, LLC

Home2Suites

2630 Wilde Lake Blvd.  
Pensacola, FL 32526

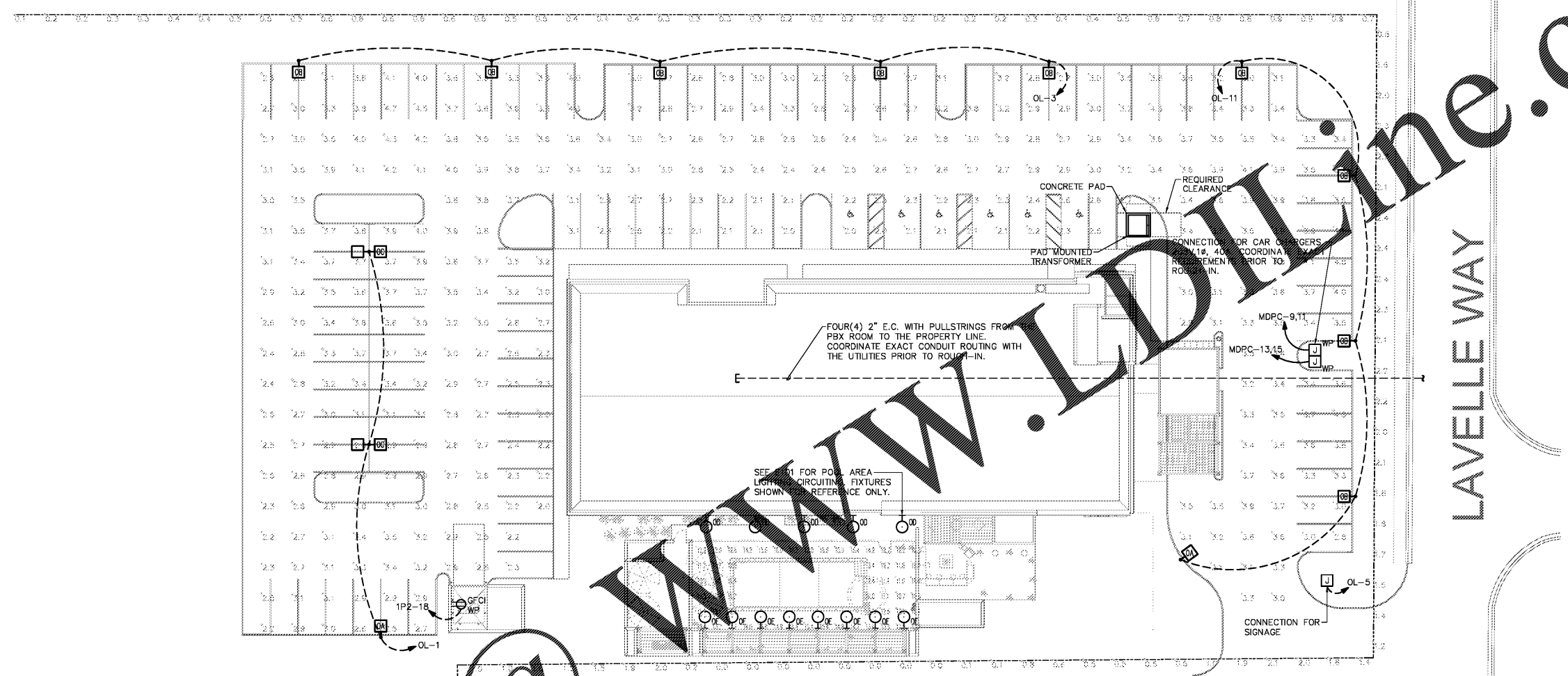
Drawing Title  
Electrical Site Plan

Phase  
Construction Documents

Project No. 17-101  
Prepared by MSM  
Checked by EDB  
Date July 31, 2018

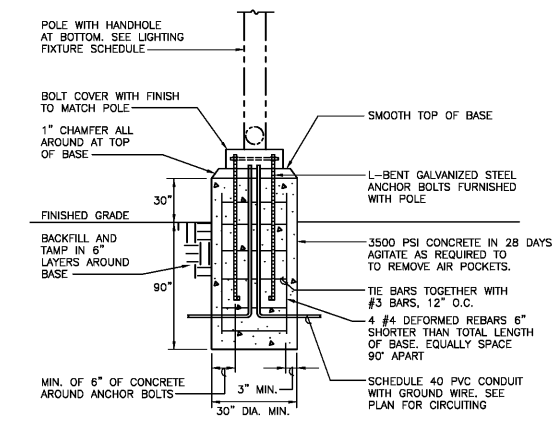
Sheet No. E100

Review



**1 SITE PLAN - ELECTRICAL**  
E100 SCALE: 1" = 20'

Calculation Summary						
Label	CalcType	Units	Avg	Max	Min	Avg/Min Max/Min
Parking	Illuminance	Fc	3.11	4.8	2.0	1.56 2.40
Pool	Illuminance	Fc	12.99	17.0	10.5	1.24 1.62
Property Line	Illuminance	Fc	0.70	2.4	0.0	N.A. N.A.



**2 POLE BASE DETAIL**  
E100 NO SCALE

Order Plans @

WWW.IDLINE.COM