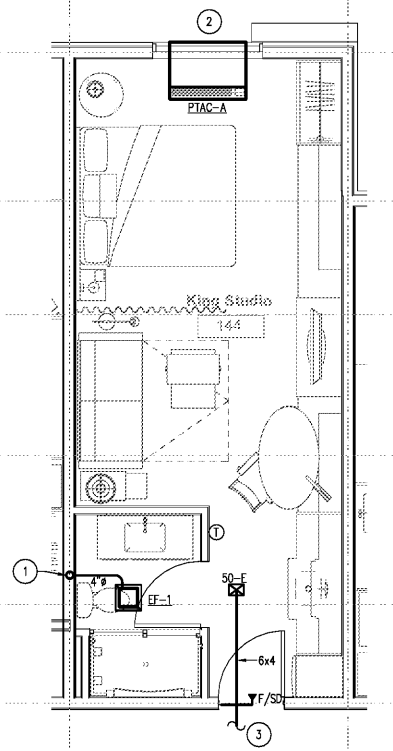
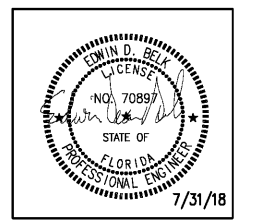
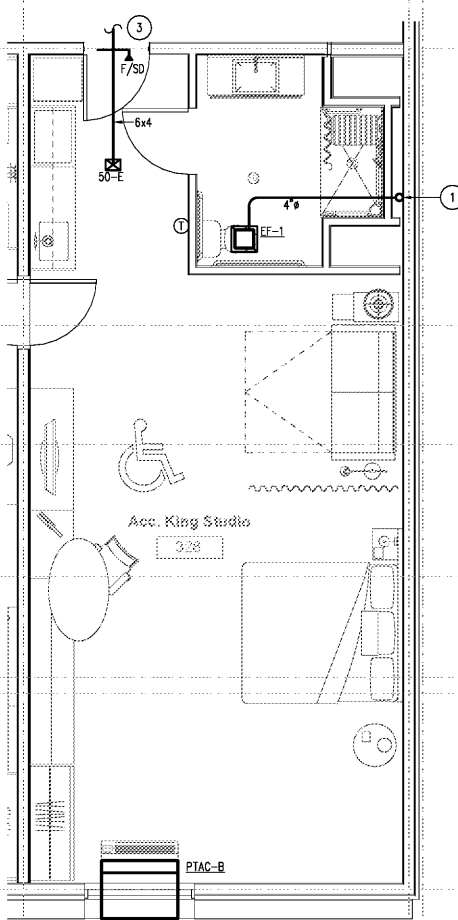


REVISIONS		
No.	Date	Description

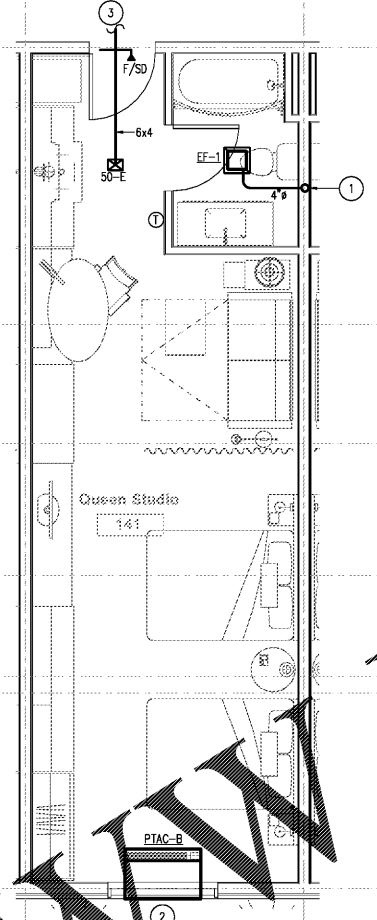
Information contained on this drawing and in all digital files associated is authorized for use on the project named herein only and is the property of MISHRA ARCHITECTURE PLLC and may not be reproduced in any manner without express written or verbal permission from authorized individuals. Original drawing is 24"x36" and scales are as indicated. © 2008 MISHRA ARCHITECTURE PLLC



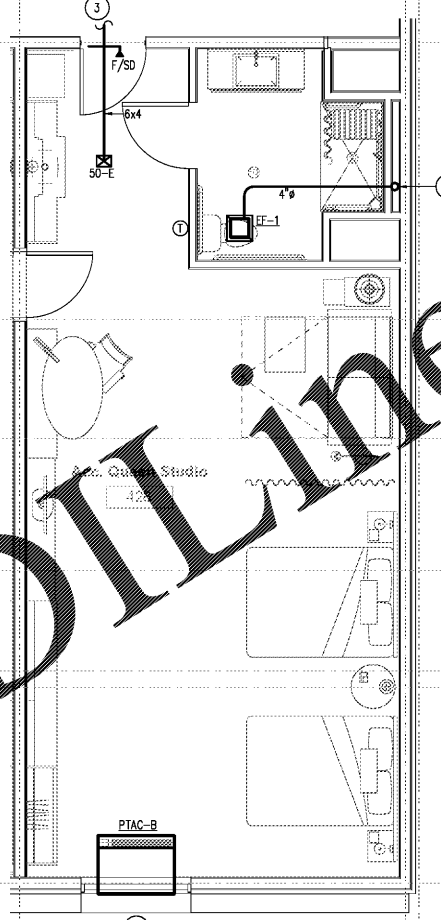
1 KING STUDIO
M301 SCALE: 1/4" = 1'-0"



2 ACC KING STUDIO
M301 SCALE: 1/4" = 1'-0"

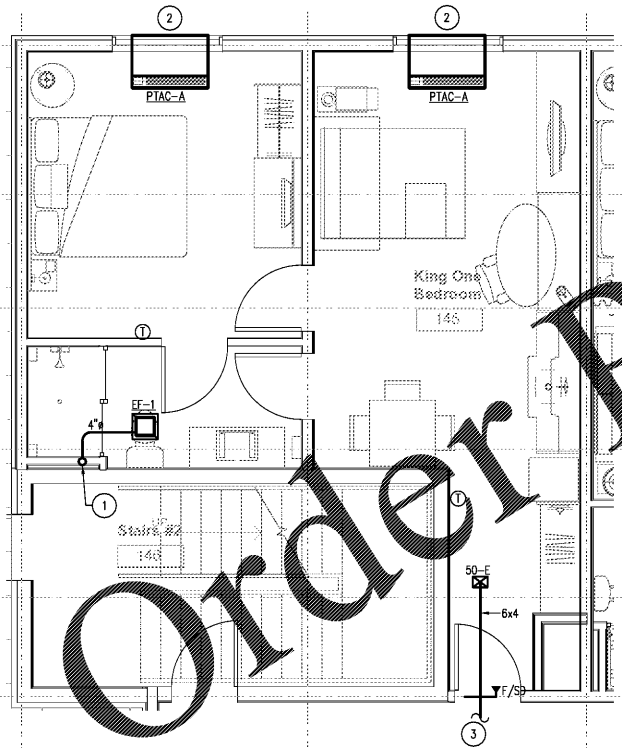


3 QUEEN STUDIO
M301 SCALE: 1/4" = 1'-0"

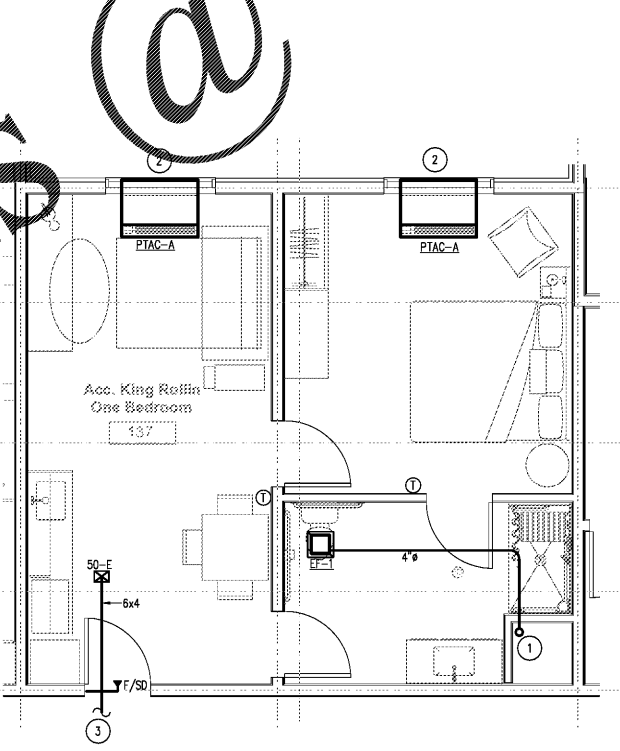


4 ACC QUEEN STUDIO
M301 SCALE: 1/4" = 1'-0"

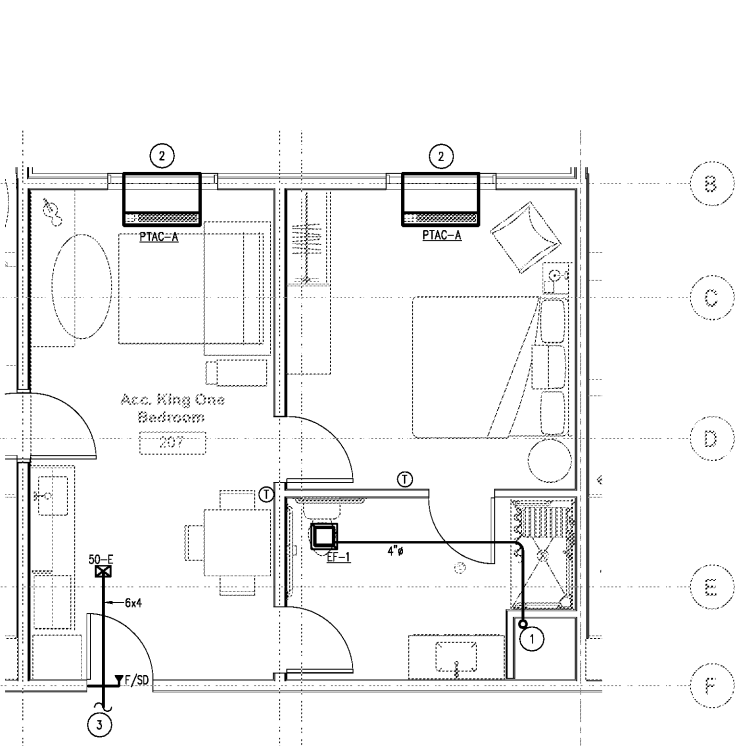
- MECHANICAL KEYED NOTES**
- 1 ROUTE 4" EXH. UP IN RATED WALL TO ROOF. DUCTWORK SHALL BE MINIMUM 26 GAUGE STEEL.
 - 2 SEE CONDENSATE DRAIN DETAIL FOR PTACS ON SHEET M002.
 - 3 SEE OVERALL FLOOR PLANS FOR CONTINUATION.



5 KING ONE BEDROOM
M301 SCALE: 1/4" = 1'-0"



6 ACC. KING ROLL-IN ONE BEDROOM
M301 SCALE: 1/4" = 1'-0"



7 ACC. KING ONE BEDROOM
M301 SCALE: 1/4" = 1'-0"

Order Plans @

WWW.LDILINE.COM

KEY PLAN

VTM Hotels, LLC

Home2Suites

2630 Wilde Lake Blvd.
Pensacola, FL 32526

Drawing Title
Enlarged
Guestroom Plans

Phase
Construction Documents

Project No. 17-101
Prepared by CRM
Checked by PSH
Date July 31, 2018

Sheet No. M301

Review

Home2Suites