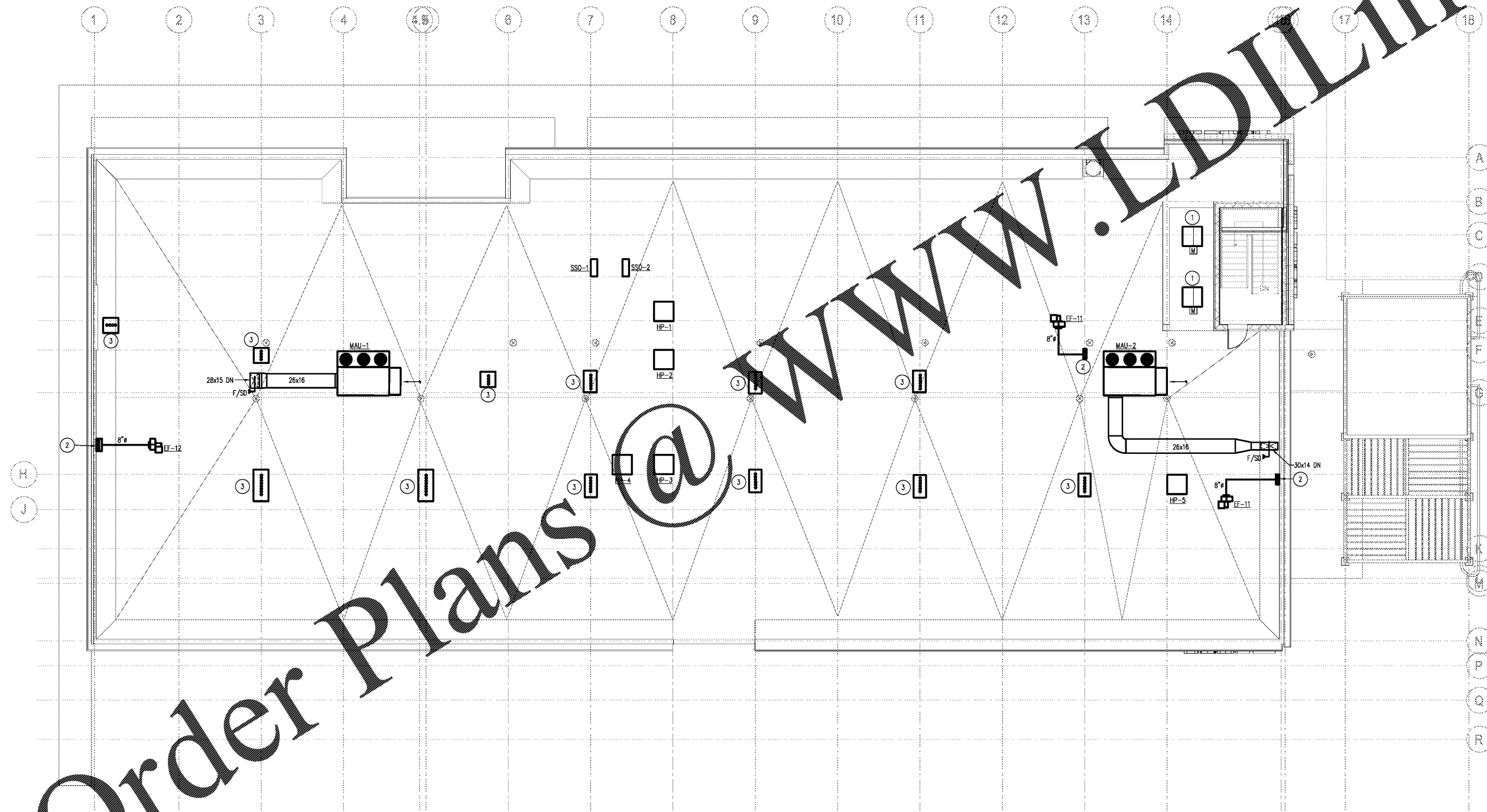


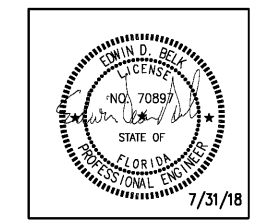
MECHANICAL KEYED NOTES

- 1 PROVIDE 30"x30" RUSKIN ELF LOUVER W/ MOTOR OPERATED DAMPER (MOD) AT TOP OF ELEVATOR SHAFT. MOD SHALL REMAIN CLOSED AND OPEN UPON DETECTION OF SMOKE IN ELEVATOR SHAFT. ROUTE 30"x30" DUCTWORK FROM LOUVER UP TO GREENHECK FOR HOOD ON ATTIC ROOF. PROVIDE W/ ROOF CURB AND BIRD SCREEN. THROAT SHOULD BE 30"x30".
- 2 PROVIDE SHEET METAL PLENUM TO FULLY COVER EXHAUST DUCTS. SEAL AROUND SHEET METAL AIR AND WATER TIGHT.
- 3 GREENHECK FOR EXHAUST HOOD W/ BACKDRAFT DAMPER. HOOD SHALL BE SIZED SUCH THAT THROAT COVERS ALL EXHAUST DUCTS. PROVIDE WITH ROOF CURB AND BIRD SCREEN.



REVISIONS		
No.	Date	Description

Information contained on this drawing and in all digital files associated is authorized for use on the project named herein only and is the property of MISHRA ARCHITECTURE PLLC and may not be reproduced in any manner without express written or verbal permission from authorized individuals. Original drawing is 24"x36" and scales are as indicated. © 2008 MISHRA ARCHITECTURE PLLC



KEY PLAN

VTM Hotels, LLC

Home2Suites
2630 Wilde Lake Blvd.
Pensacola, FL 32526

Drawing Title
Mechanical Roof Plan

Phase
Construction Documents

Order Plans

1 MECHANICAL ROOF PLAN
M201 SCALE: 1/8" = 1'-0"

NOTE:
ALL ITEMS ON ROOF SHALL BE STRAPPED IN A CODE APPROVED MANNER. SEE DETAIL 15/M003.

Project No.	17-101	Sheet No.	M201
Prepared by	CRM		
Checked by	PSH		
Date	July 31, 2018		

Review

Home2Suites