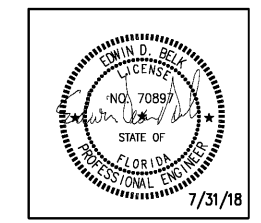


REVISIONS		
No.	Date	Description

Information contained on this drawing and in all digital files associated is authorized for use on the project named herein only and is the property of MISHRA ARCHITECTURE PLLC and may not be reproduced in any manner without express written or verbal permission from authorized individuals. Original drawing is 24"x36" and scales are as indicated. © 2008 MISHRA ARCHITECTURE PLLC



**KEY PLAN**

VTM Hotels, LLC

Home2Suites

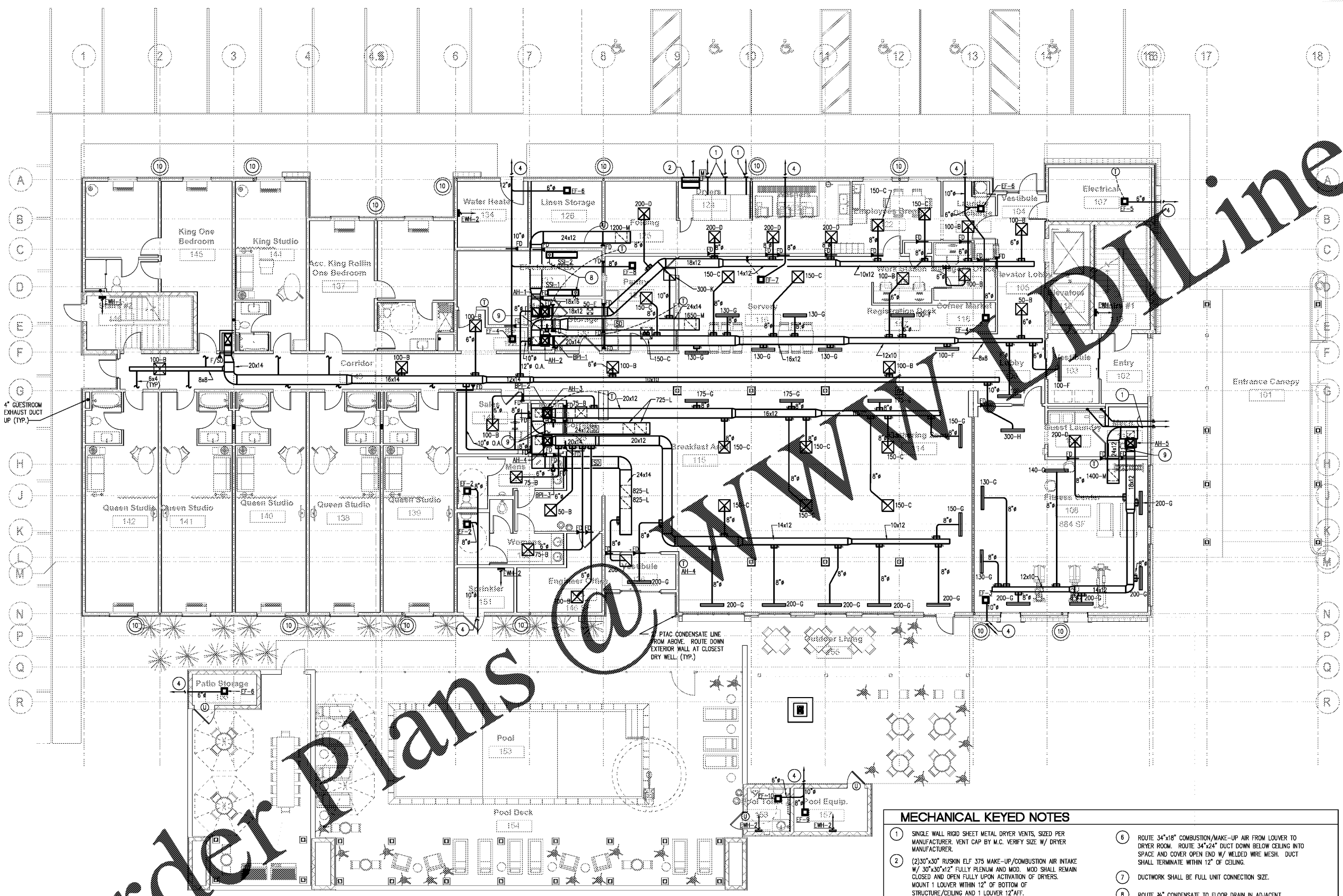
2630 Wilde Lake Blvd.  
Pensacola, FL 32526

Drawing Title  
Mechanical First Floor Plan

Phase  
Construction Documents

Project No.	17-101	Sheet No.	M101
Prepared by	CRM		
Checked by	PSH		
Date	July 31, 2018		

Review



- MECHANICAL KEYED NOTES**
- SINGLE WALL RIGID SHEET METAL DRYER VENTS, SIZED PER MANUFACTURER. VENT CAP BY M.C. VERIFY SIZE W/ DRYER MANUFACTURER.
  - (2) 30"x30" RUSKIN ELF 375 MAKE-UP/COMBUSTION AIR INTAKE W/ 30"x30"x12" FULLY PLENUM AND MOD. MOD SHALL REMAIN CLOSED AND OPEN FULLY UPON ACTIVATION OF DRYERS. MOUNT 1 LOUVER WITHIN 12" OF BOTTOM OF STRUCTURE/CEILING AND 1 LOUVER 12" AFF.
  - ROUTE ¾" CONDENSATE DOWN IN WALL. SPILL TO FLOOR DRAIN UNDER ICE MAKER. FLOOR DRAIN BY P.C.
  - FAN MFR. LOUVERED WALL DISCHARGE.
  - ROUTE ¾" CONDENSATE TO FLOOR DRAIN. FLOOR DRAIN BY P.C.
  - ROUTE 34"x18" COMBUSTION/MAKE-UP AIR FROM LOUVER TO DRYER ROOM. ROUTE 34"x24" DUCT DOWN BELOW CEILING INTO SPACE AND COVER OPEN END W/ WELDED WIRE MESH. DUCT SHALL TERMINATE WITHIN 12" OF CEILING.
  - DUCTWORK SHALL BE FULL UNIT CONNECTION SIZE.
  - ROUTE ¾" CONDENSATE TO FLOOR DRAIN IN ADJACENT MECHANICAL ROOM.
  - ROUTE 1" CONDENSATE TO FLOOR DRAIN. FLOOR DRAIN BY P.C.
  - CONDENSATE DRY WELL.

**1 MECHANICAL 1ST FLOOR PLAN**  
SCALE: 1/8" = 1'-0"

Order Plans

www.drawingline.com