

NO.	DATE	REVISION

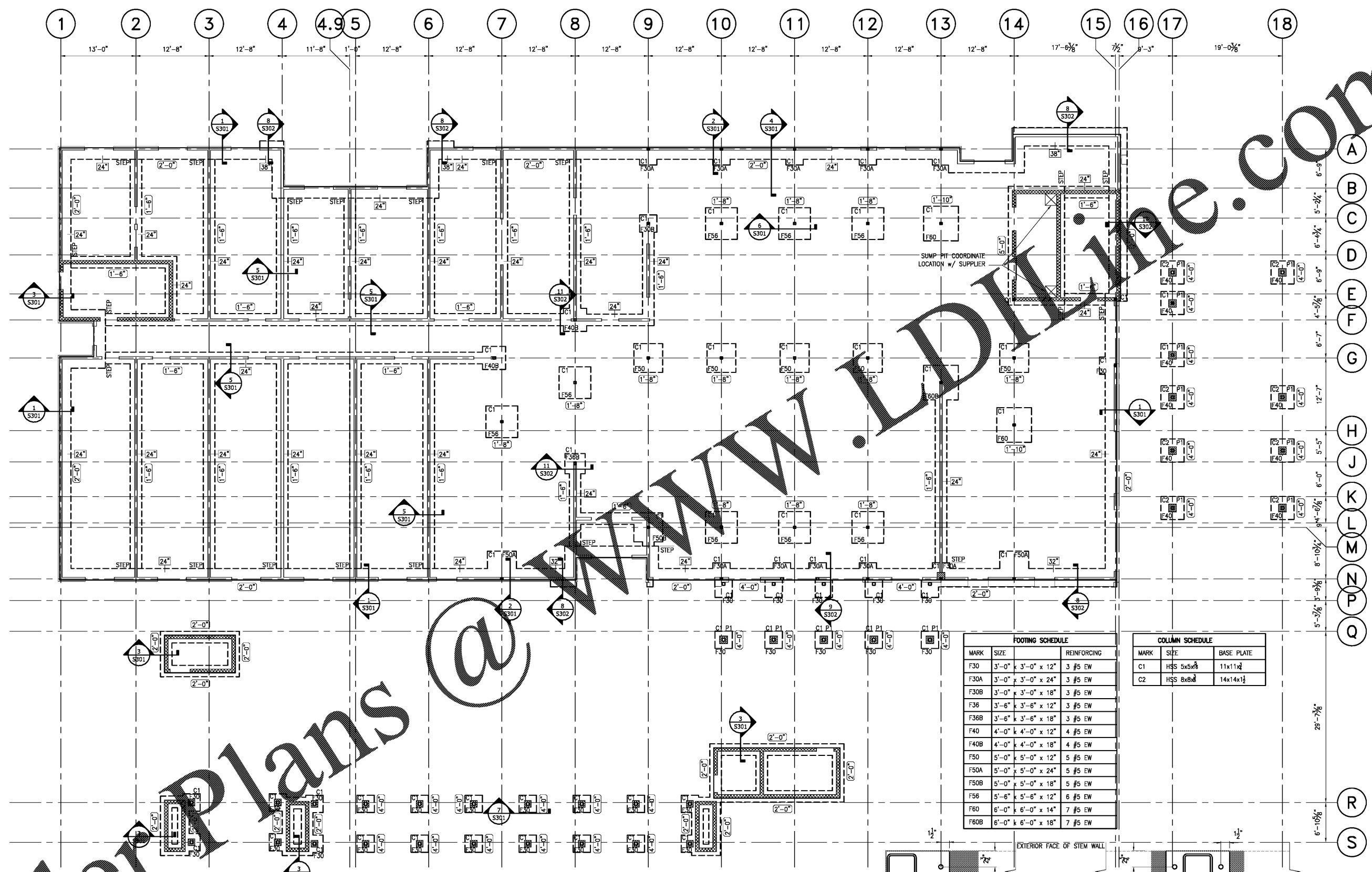
NO.	DATE	REVISION

HOME 2 SUITES
 2630 WILDE LAKE BLVD
 PENSACOLA, FL 32526

RELEASED FOR:
 □ PRELIMINARY ONLY
 □ BIDDING/PRICING
 ■ PERMIT
 ■ CONSTRUCTION
 DATE : 08-06-18

DRAWING TITLE:
FOUNDATION PLAN

SCALE: AS SHOWN
 PROJECT NO: 037502
 DATE: 08-06-18
 DRAWN BY: JVS
 CHECKED BY: WJW
 SHEET NO:
S101



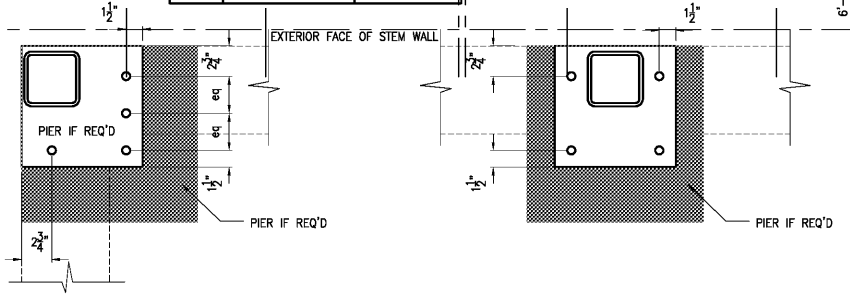
FOOTING SCHEDULE		
MARK	SIZE	REINFORCING
F30	3'-0" x 3'-0" x 12"	3 #5 EW
F30A	3'-0" x 3'-0" x 24"	3 #5 EW
F30B	3'-0" x 3'-0" x 18"	3 #5 EW
F36	3'-6" x 3'-6" x 12"	3 #5 EW
F36B	3'-6" x 3'-6" x 18"	3 #5 EW
F40	4'-0" x 4'-0" x 12"	4 #5 EW
F40B	4'-0" x 4'-0" x 18"	4 #5 EW
F50	5'-0" x 5'-0" x 12"	5 #5 EW
F50A	5'-0" x 5'-0" x 24"	5 #5 EW
F50B	5'-0" x 5'-0" x 18"	5 #5 EW
F56	5'-6" x 5'-6" x 12"	6 #5 EW
F60	6'-0" x 6'-0" x 14"	7 #5 EW
F60B	6'-0" x 6'-0" x 18"	7 #5 EW

COLUMN SCHEDULE		
MARK	SIZE	BASE PLATE
C1	HSS 5x5x8	11x11 $\frac{1}{2}$
C2	HSS 8x8x8	14x14x $\frac{1}{2}$

FOUNDATION PLAN

1/8" = 1'-0"

(-x) INDICATES BOTTOM OF FOOTING BELOW FINISHED FLOOR
 (xx) INDICATES WIDTH OF FOOTING



CORNER CONDITION

WALL CONDITION

OFFSET BASE PLATE DETAILS

1 1/2" = 1'-0"

OCCURS AT EXTERIOR WALL CONDITIONS

Order Plans @

WWW.LDLINE.COM