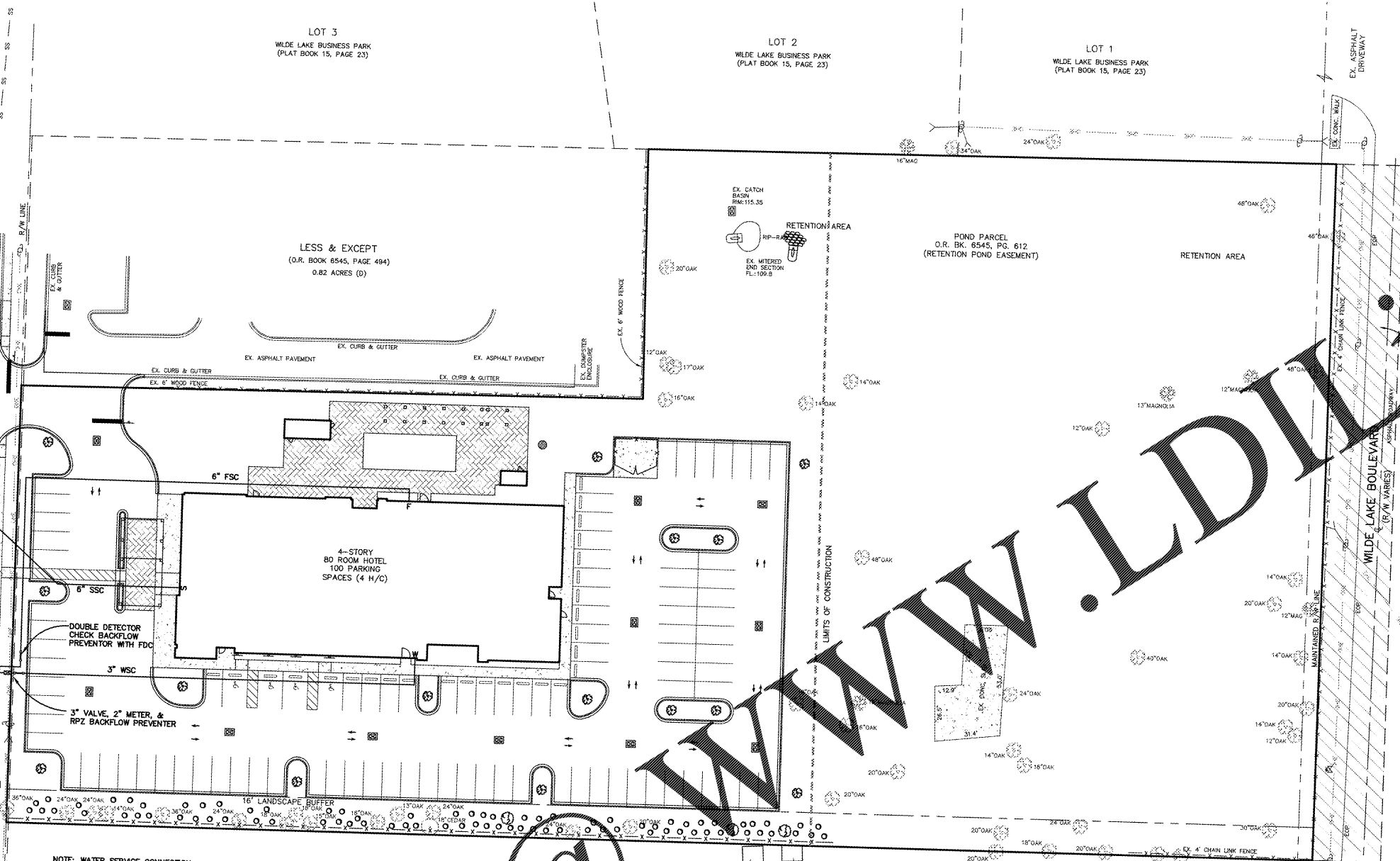


LEGEND

- PROPOSED SANITARY SEWER MAIN
- PROPOSED WATER MAIN
- WSC WATER SERVICE CONNECTION
- FIRE SERVICE CONNECTION
- SSC SEWER SERVICE CONNECTION
- EXISTING GAS MAIN
- EXISTING SANITARY SEWER MAIN
- EXISTING WATER MAIN
- ⊕ GAS VALVE
- ⊕ GAS METER
- ⊕ BACKFLOW PREVENTER
- ⊕ WATER METER
- ⊕ FIRE HYDRANT
- ⊕ WATER VALVE
- ⊕ IRRIGATION VALVE
- ⊕ WATER SHUT-OFF
- ⊕ SANITARY SEWER MANHOLE
- ⊕ OAK TREE
- ⊕ MAPLE TREE
- ⊕ SHRUB / BUSH



NOTE: WATER SERVICE CONNECTION SHALL CONSIST OF A 6 x 6 SADDLE TAP, CO THREAD, BLUE 3" PE ENDOT ENDUPURE PIPE ALL THE WAY TO THE METER, 3" CURB STOP, BLUE TRACER WIRE, AND A 3" OWNER CONTROL VALVE DOWN STREAM OF METER (SEE EQUA DETAIL D-44 ON SHEET 07)

LANDSCAPE REQUIREMENTS

LANDSCAPE AREA	PLANTING REQUIREMENTS	SITE INFORMATION	PLANTS REQUIRED	PROPOSED VEGETATION
PARKING LOT	1 CANOPY TREE PER ROW CANOPY / 15'	15 PARKING ROW END	15 CANOPY TREES	15 CANOPY TREES
BUFFER (WEST SIDE) TYPE B	2 CANOPY / 15' ROW 400 LF 20 SHRUBS / 15' LF	400 LF	10 CANOPY TREES 8 UNDERSTORY TREES 80 SHRUBS 400' FENCE	15 EX. CANOPY TREES 3 UNDERSTORY TREES 80 SHRUBS 400' FENCE
TREE REPLACEMENT (REPLACEMENT LIMIT)	25 INCHES/ACRE	1.94 ACRES (LIMITS OF CONSTRUCTION)	25 INCHES/ARC X 1.94 ACRES = 48.50 CI	48.50 CI/4 INCH TREES ² = 13 CANOPY TREES IN PARKING LOT
PROPOSED LIVE OAK TREE (CANOPY)			TOTAL REQUIRED:	25 CANOPY TREES 8 UNDERSTORY TREES 80 SHRUBS
PROPOSED CREPE MYRTLE TREE (UNDERSTORY)			TOTAL REQUIRED:	15 CANOPY TREES 3 UNDERSTORY TREES 80 SHRUBS
PROPOSED AZALEA (BUSH)			TOTAL PROPOSED:	15 EX. CANOPY TREES

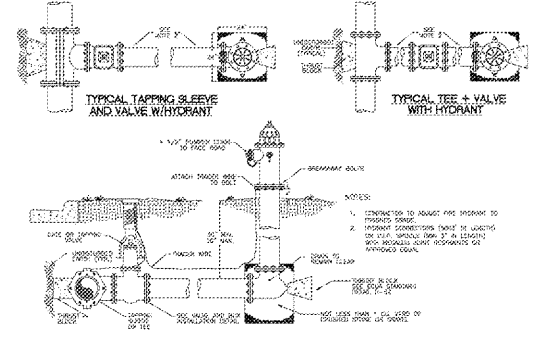
TREE REMOVAL CHART

SPECIES	SIZE DIAMETER	QUANTITY	TOTAL INCHES
OAK	12"	2	24"
OAK	14"	3	42"
OAK	17"	1	17"
OAK	18"	10	180"
OAK	24"	1	24"
OAK	27"	1	27"
OAK	30"	2	60"
OAK	40"	1	40"
TOTAL		21	414"

¹ TOTAL TREE REPLACEMENT FOR NON-HERITAGE TREES NEED NOT TO EXCEED 25 CALIPER INCHES PER DEVELOPMENT ACRE (DSM CHAPTER 2, ARTICLE 2 SEC. 5-6.2.C).
² 4" DIAMETER TREES
 TREES PLANTED TO FULFILL THE MINIMUM LANDSCAPE REQUIREMENTS SHALL NORMALLY ATTAIN A MATURE HEIGHT OF AT LEAST 20 FEET AND HAVE A MINIMUM CALIPER OF 2.5 INCHES OR GREATER MEASURED AT 4 INCHES ABOVE ROOT BALL AT PLANTING (ESCAMBIA COUNTY DSM CHAPTER 2 ARTICLE 2).

LANDSCAPE NOTES:

- SHRUBS SHALL BE A MINIMUM OF TWELVE (12) INCHES IN HEIGHT WHEN MEASURED IMMEDIATELY AFTER PLANTING.
- TREES SHALL HAVE A MINIMUM HEIGHT OF SIX (6) FEET AT THE TIME OF PLANTING. TREES HAVING AN AVERAGE MATURE SPREAD OF CROWN LESS THAN 20 FEET MAY BE ARRANGED IN GROUPINGS SO AS TO CREATE THE EQUIVALENT OF 20-FOOT CROWN SPREAD.
- ONLY FLORIDA #1 GRADE OR BETTER PLANT MATERIALS AS DESCRIBED BY THE FLORIDA DEPARTMENT OF AGRICULTURE CAN BE PLANTED ON PROJECT SITE.
- THE REMAINDER OF THE FRONT BUFFER IS TO BE SODDED.
- A RAIN SENSOR DEVICE OR SWITCH SHALL BE INSTALLED WITH IRRIGATION SYSTEM.
- IRRIGATION TO BE PROVIDED BY SHALLOW WELL.
- ALL LANDSCAPING SHALL BE HIGH SALT TOLERANT.



TYPICAL FIRE HYDRANT INSTALLATION
 N.T.S. (D-50)

Order Plans @

WWW.LDLINE.COM

THIS SHEET IS THE PROPERTY OF CEI & IS NOT TO BE REPRODUCED WITHOUT WRITTEN CONSENT FROM CEI.