

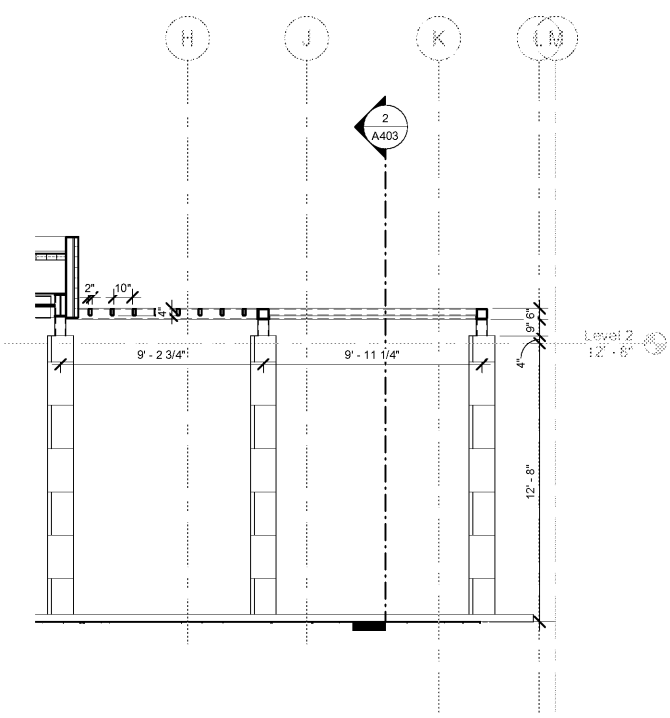
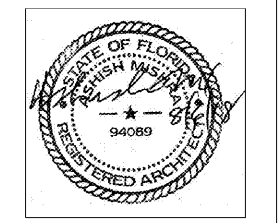
**CIVIL:**  
Choctaw Engineering, Inc.  
112 Truxton Avenue  
Fort Walton Beach, FL 32547  
Phone: (850) 862-6211  
Fax: (850) 863-8059  
Email: msine@choctaweng.com

**STRUCTURAL:**  
Whispering Engineering Services, LLC  
122 Nut Tree Court  
Lexington, SC 29074  
Phone: (803) 957-4008  
Email: bill@weslex.com

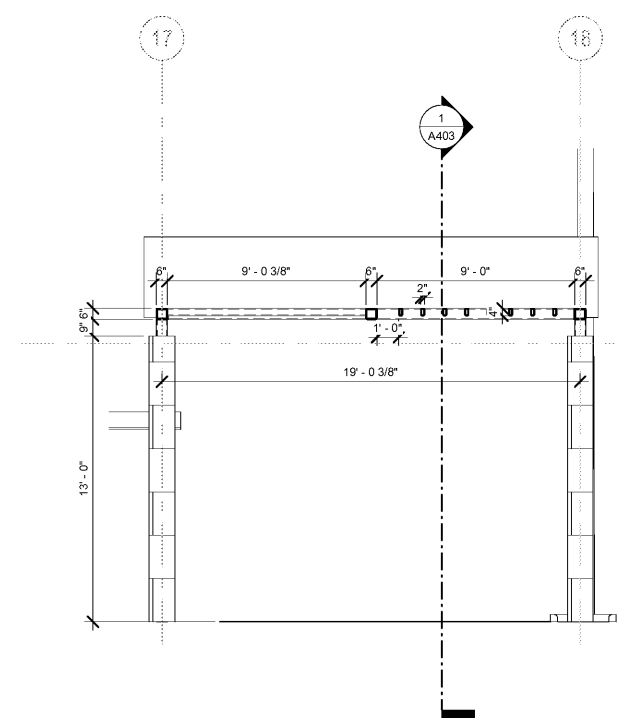
**MEP:**  
Allied Consulting Engineers  
2905-D Queen City Drive  
Charlotte, NC 28208  
Phone: (704) 399-3943  
Email: dbelk@allied-engineers.com

REVISIONS		
No.	Date	Description

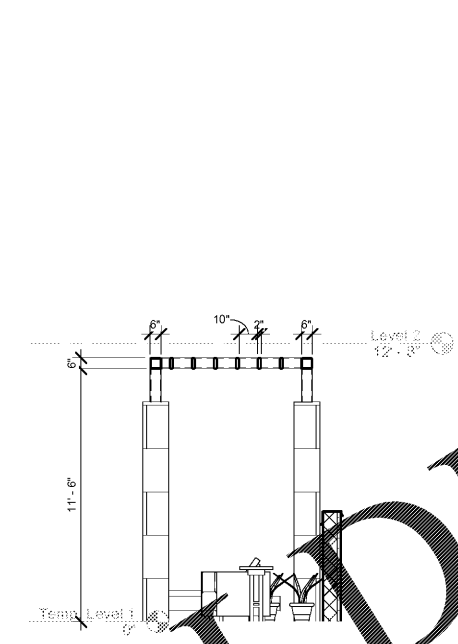
Information contained on this drawing and in all digital files associated is authorized for use on the project named herein only and is the property of MISHRA ARCHITECTURE PLLC and may not be reproduced in any manner without express written or verbal permission from authorized individuals. Original drawing is 24"x36" and scales are as indicated. © 2008 MISHRA ARCHITECTURE PLLC



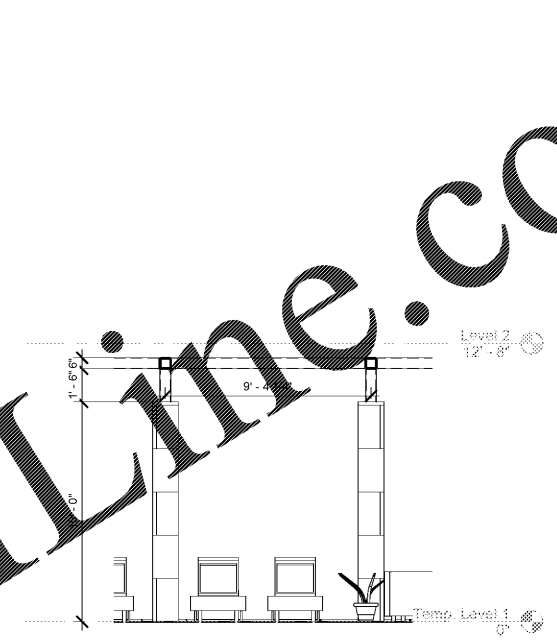
① Section CanopyEW  
1/4" = 1'-0"



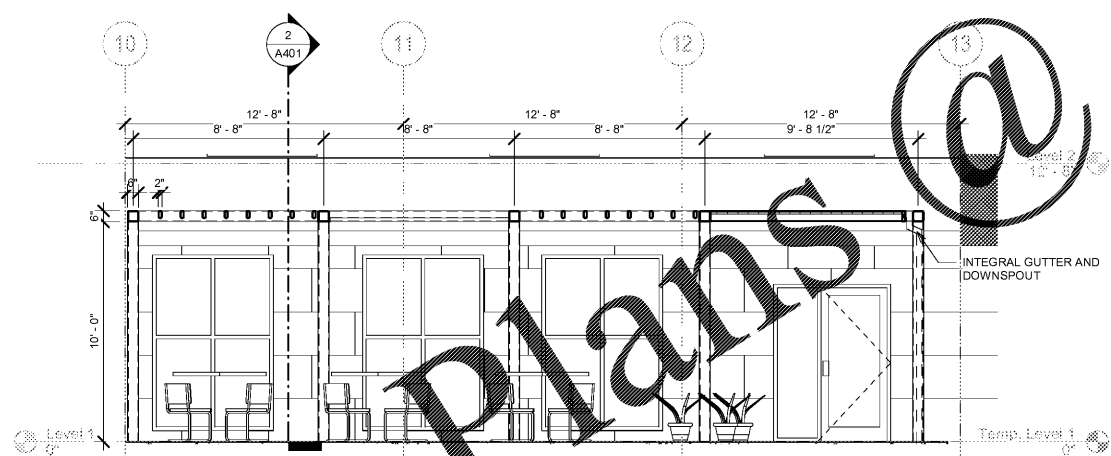
② Section CanopyNS  
1/4" = 1'-0"



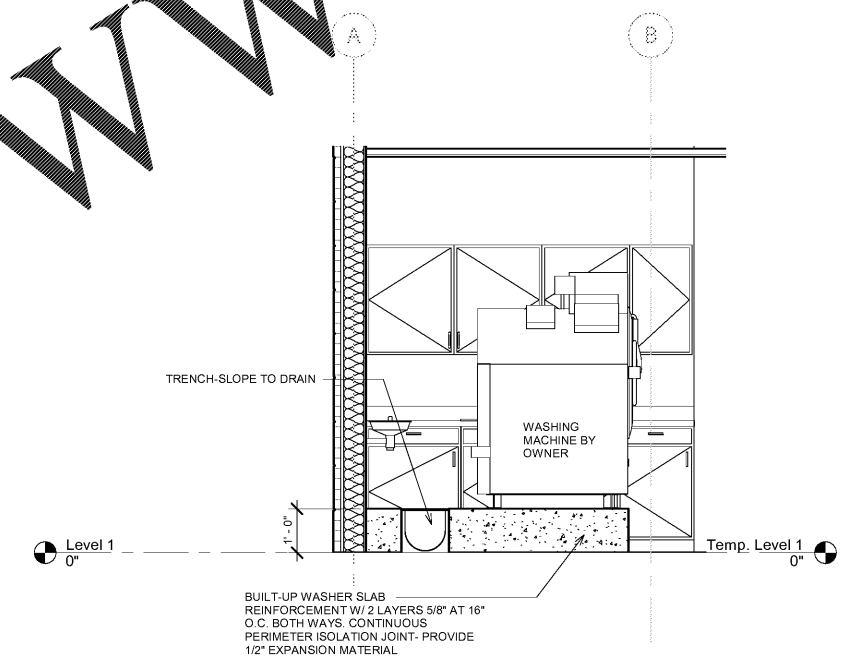
③ Section Pool Canopy EW  
1/4" = 1'-0"



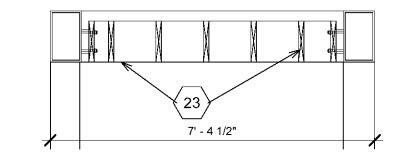
④ Section Pool Canopy NW  
1/4" = 1'-0"



⑤ Section Outdoor Sitting CanopyNW  
1/4" = 1'-0"



⑥ Laundry Slab Section  
1/2" = 1'-0"



⑦ Pool Trellis Detail  
1/2" = 1'-0"

Order Plans @

**KEY PLAN**

VTM Hotels, LLC  
Home2Suites

2630 Wilde Lake Blvd.  
Pensacola, FL 32526

Drawing Title  
Section and Details

Phase  
Construction Documents

Project No.	17-101	Sheet No.	A403
Prepared by	Author	Checked by	Checker
Date	Aug 06, 2018	Review	