

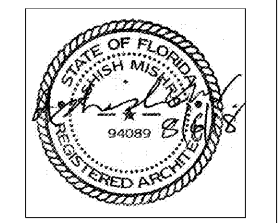
CIVIL:
Choctaw Engineering, Inc.
112 Truxton Avenue
Fort Walton Beach, FL 32547
Phone: (850) 862-6211
Fax: (850) 863-8059
Email: msiner@choctaweng.com

STRUCTURAL:
Whispering Engineering Services, LLC
122 Nut Tree Court
Lexington, SC 29074
Phone: (803) 957-4008
Email: bill@weslex.com

MEP:
Allied Consulting Engineers
2905-D Queen City Drive
Charlotte, NC 28208
Phone: (704) 399-3943
Email: dbelk@allied-engineers.com

REVISIONS		
No.	Date	Description

Information contained on this drawing and in all digital files associated is authorized for use on the project named herein only and is the property of MISHRA ARCHITECTURE PLLC and may not be reproduced in any manner without express written or verbal permission from authorized individuals. Original drawing is 24"x36" and scales are as indicated. © 2008 MISHRA ARCHITECTURE PLLC



KEY PLAN

VTM Hotels, LLC

Home2Suites

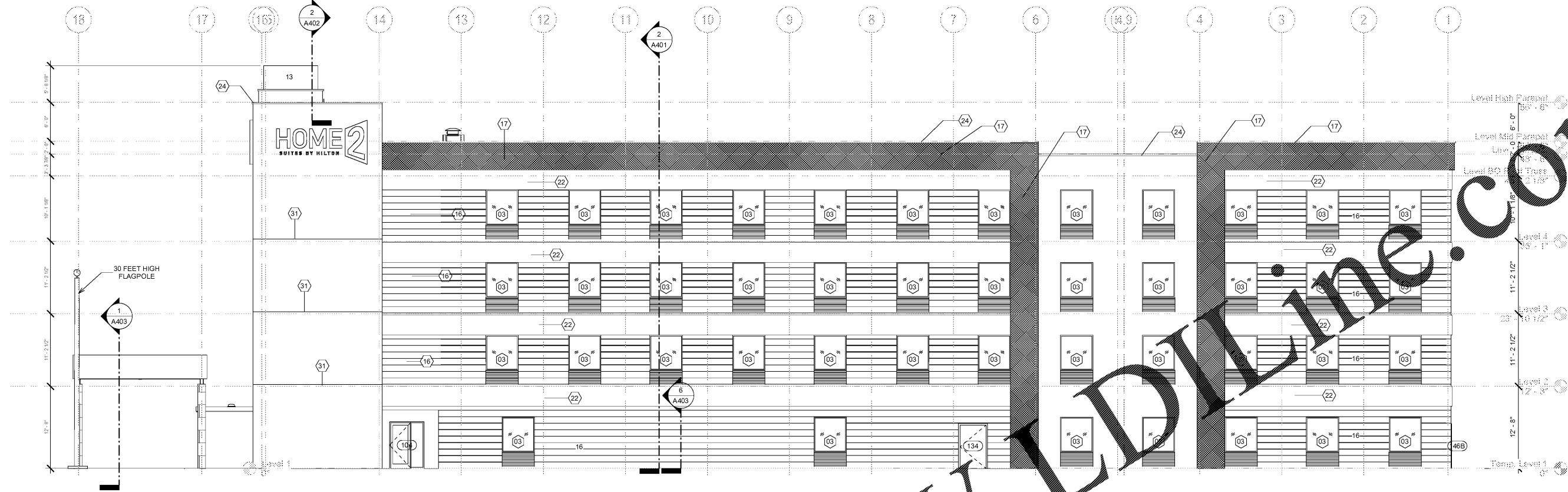
2630 Wilde Lake Blvd.
Pensacola, FL 32526

Drawing Title
Exterior Elevations

Phase
Construction Documents

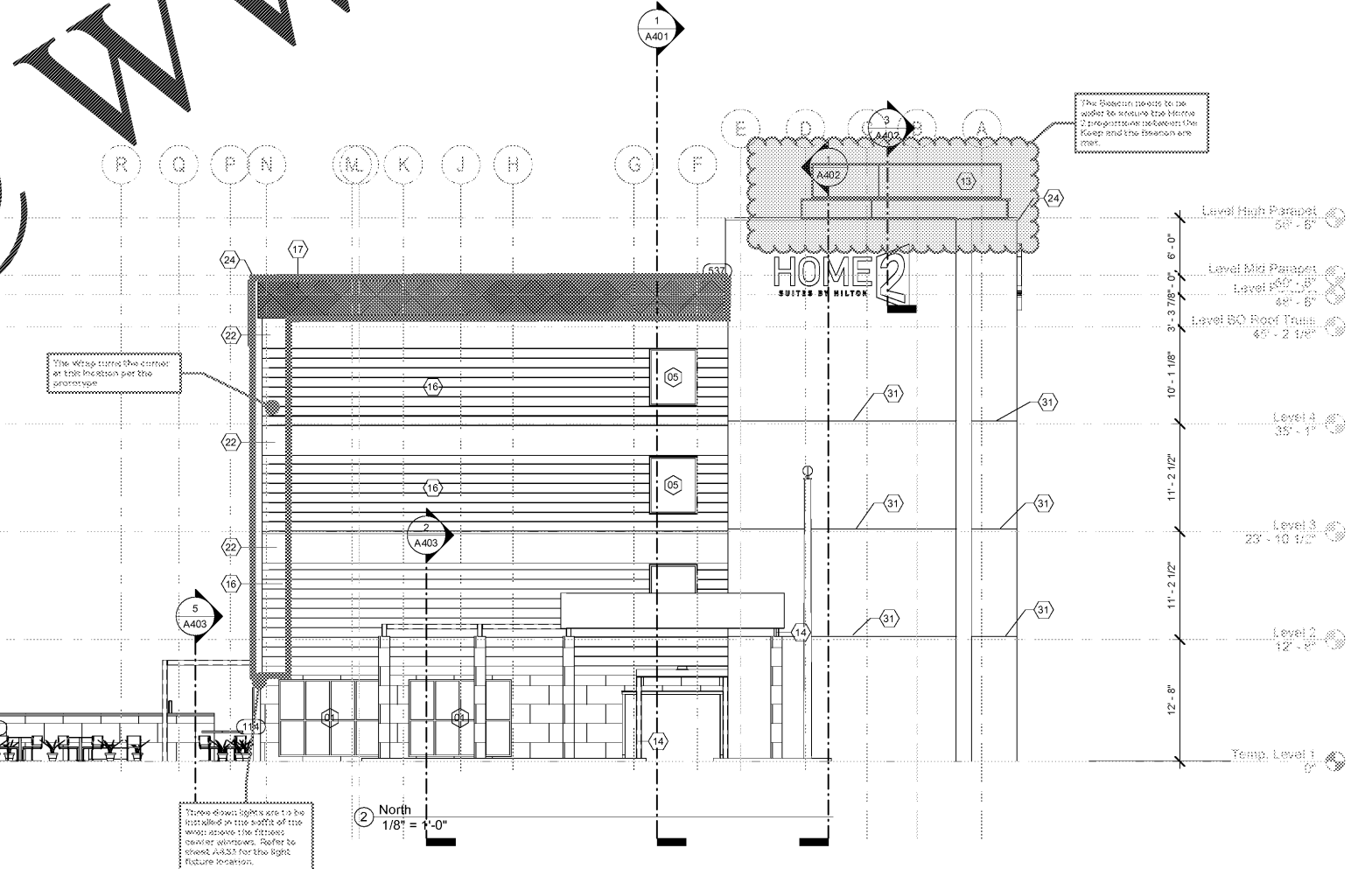
Project No.	17-101	Sheet No.	A302
Prepared by	Author	Checked by	Checker
Date	Aug 06, 2018		

Review



- EXTERIOR FINISH LEGEND**
- 1 APPROXIMATE LINE OF GRADE
 - 2 ABOVE GRADE EXPOSED FOUNDATION WALL
 - 3 MASONRY OR TILE - BASE
 - 4 MASONRY OR TILE - FIELD - ASHLAR PATTERN
 - 5 CONCRETE FOOTING AND FOUNDATION WALL AS REQUIRED PER LOCAL FROST DEPTHS
 - 6 OCULUS
 - 8 ALUMINUM FIXED WINDOW W/ THERMAL BROKEN FRAME, INSULATED GLAZING WITH INTEGRAL ALUMINUM LOUVER AT PTAC UNITS
 - 9 ALUMINUM STOREFRONT SYSTEM W/ THERMAL BROKEN FRAME AND INSULATED GLAZING
 - 11 EXHAUST, REFER TO MECHANICAL DRAWINGS
 - 12 ALUMINUM SLIDING ENTRY DOOR W/ INSULATED GLAZING
 - 13 BEACON - BEAM - REFER TO STYLE GUIDE
 - 14 PAINTED TUBE STEEL CANOPY W/ STAINED WOOD TRELLIS
 - 16 TONGUE N GROOVE WOOD PLANK CEILING, STAINED
 - 17 ENVELOPE - CORE FINISH - REFER TO STYLE GUIDE
 - 18 ENVELOPE - WRAP FINISH - REFER TO STYLE GUIDE
 - 19 FINISH CONTROL JOINT
 - 20 OVERFLOW SCUPPER - BASIS OF DESIGN NESCO MFG INC. - MODEL # SCT914R -- REFER ALSO TO DETAIL 6JA6.12
 - 21 TAMPER RESISTANT, RECESSED HOSE BIB - MOUNT TOP AT +12' A.F.F.
 - 22 ENVELOPE - ACCENT FINISH - REFER TO STYLE GUIDE
 - 23 ENVELOPE - ACCENT FINISH - REFER TO STYLE GUIDE
 - 24 SIGNAGE -- REFER TO EXTERIOR SIGNAGE SPECIFICATIONS
 - 25 KYNAR FINISH ALUMINUM COPING SYSTEM -- COLOR TO MATCH ADJACENT MATERIAL
 - 26 KYNAR FINISH ALUMINUM GRAVEL STOP -- COLOR TO MATCH ADJACENT MATERIAL
 - 27 REVIEW ALL VIEWS AROUND PROPERTY BEFORE LOCATING ALL ROOF TOP MECHANICAL UNITS. VERIFY ALL EQUIPMENT IS ADEQUATELY SCREENED.
 - 28 BEACON -- REFER TO SECTIONS FOR MORE INFORMATION
 - 29 PAINTED ALUMINUM OUTSIDE CORNER TRIM/FLASHLET, COLOR TO MATCH ADJACENT ENVELOPE - CORE FINISH
 - 30 EXHAUST VENT -- COLOR TO MATCH ADJACENT MATERIAL
 - 31 LIGHT FIXTURE -- REFER TO CEILING
 - 34 EXPANSION JOINT @ FLOOR LINE W/ BACKER ROD AND SEALANT
 - 35 ALUMINUM LOUVER -- COLOR TO MATCH ADJACENT MATERIAL MATCHING ADJACENT WALL
 - 36 CONCRETE PAD -- REFER TO AREA DEVELOPMENT PLAN
 - 37 ACCESS OPENING INTO BEACON
 - 38 ALUMINUM GUTTER AND DS. COLOR TO MATCH ADJ. MATERIAL
 - 39 ACCESSIBLE KEY CARD READER WIRE TO ELECTRIC STRIKE IN DOOR - TOP OF READER AT 48" MAX. HEIGHT
 - POOL PERIMETER FENCE AS REQUIRED BY CODE W/ 3'-0" GATE
 - PRECAST COPING

1 West
1/8" = 1'-0"



2 North
1/8" = 1'-0"

Order Plans @ WWW.LDLINE.COM