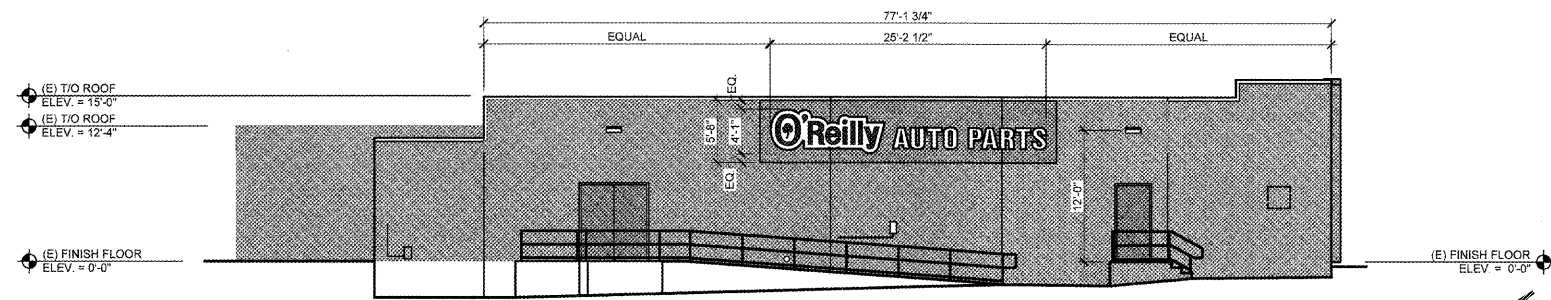
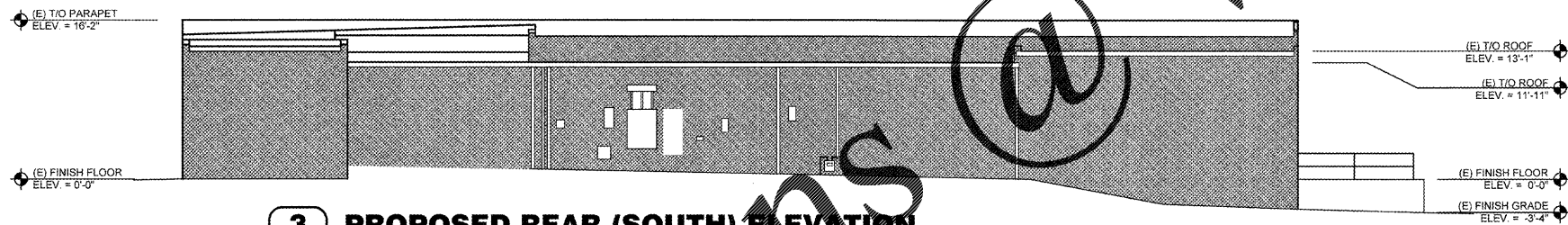


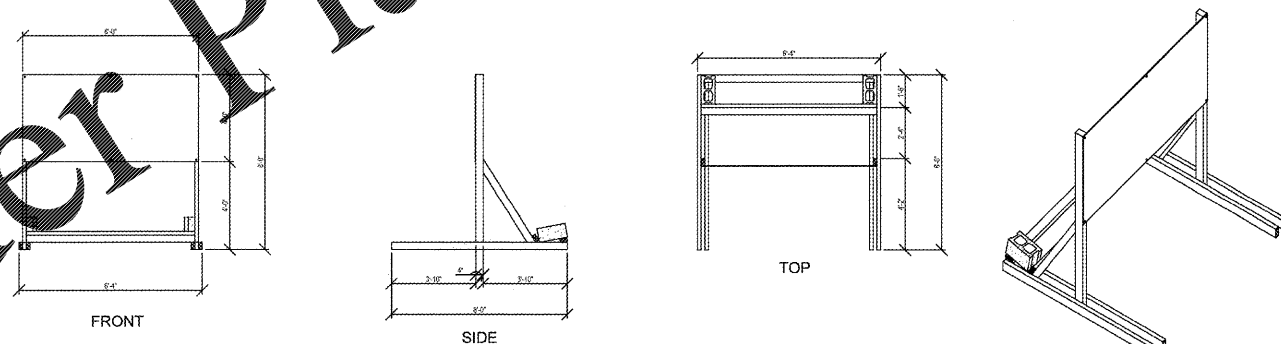
**1 PROPOSED FRONT (NORTH) ELEVATION**  
**SG2.1 SCALE: 1/8" = 1'-0"**



**2 PROPOSED LEFT (EAST) ELEVATION**  
**SG2.1 SCALE: 1/8" = 1'-0"**



**3 PROPOSED REAR (SOUTH) ELEVATION**  
**SG2.1 SCALE: 1/8" = 1'-0"**



**4 COMING SOON TEMPORARY CONSTRUCTION SIGN**  
**SG2.1 SCALE: 1/4" = 1'-0"**

**BUILDING SIGN SCHEDULE**

**FRONT EXTERIOR ELEVATION:**  
 TYPE: OR 63"/731" AP LINER  
 DETAIL: REFER TO 5/SG2.1

**LEFT EXTERIOR ELEVATION:**  
 TYPE: OR 49"/24" AP LINER  
 DETAIL: REFER TO 6/SG2.1

**RIGHT EXTERIOR ELEVATION:**  
 TYPE: NO SIGN  
 DETAIL:

**REAR EXTERIOR ELEVATION:**  
 TYPE: NO SIGN  
 DETAIL:

**SITE SIGN SCHEDULE**

**TEMPORARY CONSTRUCTION SIGN:**  
 TYPE: COMING SOON  
 DETAIL: REFER TO 4/SG2.1

**SITE SIGN:**  
 TYPE:  
 DETAIL:

**GENERAL NOTES**

- (A) CONTACT OWNER'S OR TENANT'S DESIGNATED PROJECT ADMINISTRATOR FOR QUESTIONS OR CLARIFICATIONS.
- (B) BUILDING PERMANENT SIGNAGE OWNER FURNISHED AND INSTALLED. (REFER TO SCOPE OF WORK SCHEDULE). SIGNAGE GRAPHICS PROVIDED FOR REFERENCE ONLY (N.I.C.) AND CONTRACTOR'S COORDINATION WITH SPECIFIC PROJECT CONSTRUCTION CONDITIONS. CONTRACTOR TO PROVIDE BACKING AND ROUGH-IN ELECTRICAL AS REQUIRED FOR INSTALLATION.
- (C) REQUIRED GOVERNMENTAL PERMITS FOR PERMANENT TYPE SIGNAGE TO BE PROVIDED BY OWNER OR OTHERS (N.I.C.).

**CASCO + R5**

12 Sunnen Drive, Suite 100,  
 St. Louis, MO 63145  
 T: 314.821.1100

**REVISIONS:**

ADD #1 03/14/18

**O'Reilly AUTO PARTS**

CORPORATE OFFICES  
 233 SOUTH PATTERSON  
 SPRINGFIELD, MISSOURI 65802  
 417-862-2674 PHONE

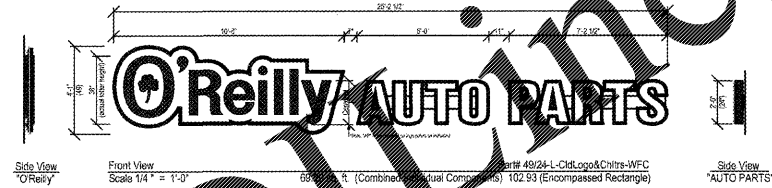
**PROJECT: RE-MODEL O'REILLY AUTO PARTS STORE**  
**103 E. GORDON AVE.**  
**GORDONSVILLE, VA 22942**

**BUILDING SIGNAGE**

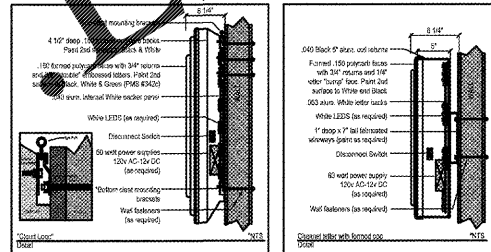
FOR REFERENCE ONLY

Professional of Record  
 DRAWN: RLJ  
 CHECKED: MGC  
 DATE: 10-17-2018  
 JOB NO.: 118168 (GDV)  
 SHEET:

**SG2.1**

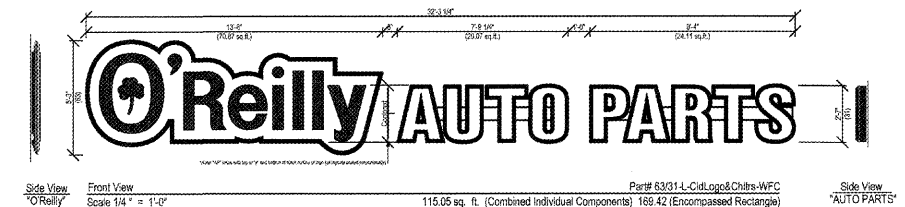


\*O'Reilly Cloud Logo with "AP" channel letters on 7" (H) x 1" (D) wireways. Wireways pain to OAP RED  
 \*O'Reilly Cloud Logo is formed polycarb with double embossment with 2nd surface painted graphics. Paint match to: Green (PMS# 342c), Black and White.  
 \*AP" to have formed polycarb caps with 1/4" letter "bumps", Black 5" aluminum coil returns, 2nd surface Black and White paint. WHITE LED illumination.

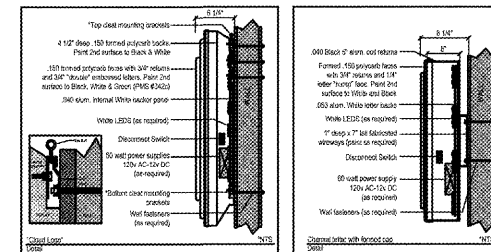


Formed Cloud Logo with "AP" Formed Caps & Channel Returns  
 Part# 49/24-L-CldLogo&Chlrs-WFC

**6 LEFT WALL SIGN ELEVATION**  
**SG2.1 SCALE: 1/4" = 1'-0"**



\*O'Reilly Cloud Logo with "AP" channel letters on 7" (H) x 1" (D) wireways. Wireways pain to OAP RED  
 \*O'Reilly Cloud Logo is formed polycarb with double embossment with 2nd surface painted graphics. Paint match to: Green (PMS# 342c), Black and White.  
 \*AP" to have formed polycarb caps with 1/4" letter "bumps", Black 5" aluminum coil returns, 2nd surface Black and White paint. WHITE LED illumination.



Formed Cloud Logo with "AP" Formed Caps & Channel Returns  
 Part# 63/31-L-CldLogo&Chlrs-WFC

**5 FRONT WALL SIGN ELEVATION**  
**SG2.1 SCALE: 1/4" = 1'-0"**

COPYRIGHT 2018 - DESIGNS, DRAWINGS AND SPECIFICATIONS ARE INSTRUMENTS OF SERVICE AND ARE THE PROPERTY OF THE DESIGN PROFESSIONAL. REPRODUCTION PROHIBITED WITHOUT THE EXPRESSED WRITTEN CONSENT OF THE DESIGN PROFESSIONAL.