

EQUIPMENT SUPPORT NOTE

- DO NOT PUNCH OR USE ROOF DECK ABOVE TO SUPPORT ANY ITEMS SUCH AS CEILING GRID, MECHANICAL EQUIPMENT, ELECTRICAL EQUIPMENT, LIGHT FIXTURES, ETC. SHALL BE SUPPORTED FROM STRUCTURAL ROOF SUPPORT MEMBERS. GENERAL CONTRACTOR IS RESPONSIBLE TO NOTIFY ALL SUB-CONTRACTORS PRIOR TO WORK TO BE PERFORMED.
- ALL LIGHTS MUST BE PROPERLY INSTALLED AND SUPPORTED TO STRUCTURAL ROOF SUPPORT MEMBERS ABOVE CEILING AND ATTACHED DIAGONALLY ON LIGHT FIXTURE. DO NOT SUPPORT FROM CEILING GRID.

GENERAL NOTES

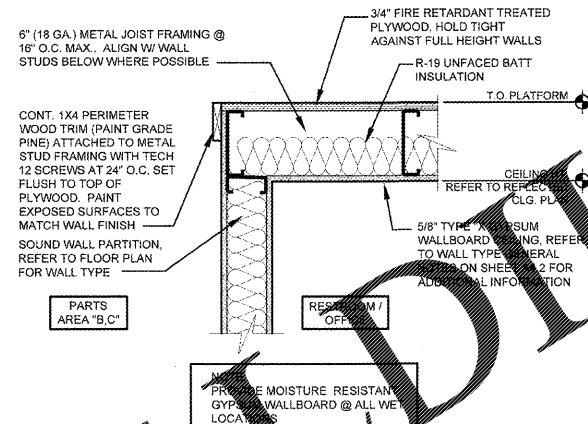
- REFER TO ARCHITECTURAL GENERAL SPECIFICATIONS FOR ADDITIONAL REQUIREMENTS.
- MECHANICAL EQUIPMENT SHOWN ON THE REFLECTED CEILING PLAN ARE FOR ARCHITECTURAL LOCATIONS ONLY. REFER TO MECHANICAL DRAWINGS FOR TYPES, SIZES, DISTRIBUTION, CONNECTIONS, AND ALL OTHER REQUIREMENTS.
- LIGHTING FIXTURES SHOWN ON THE REFLECTED CEILING PLAN ARE FOR ARCHITECTURAL LOCATIONS, QUANTITIES, AND GENERAL FIXTURE TYPE ONLY. REFER TO ELECTRICAL DRAWINGS FOR EXACT FIXTURE TYPE AND CIRCUITING.
- CONTRACTOR SHALL COORDINATE THE INSTALLATION OF THE VARIOUS TRADE ITEMS WITHIN THE SPACE ABOVE ALL CEILINGS (INCLUDING, BUT NOT LIMITED TO: STRUCTURE MEMBERS, MECHANICAL DUCTS AND INSULATION, CONDUITS, RACEWAYS, SPRINKLER SYSTEM, LIGHT FIXTURES, CEILING SYSTEMS, AND ANY SPECIAL STRUCTURAL SUPPORTS REQUIRED) AND SHALL BE RESPONSIBLE FOR MAINTAINING THE FINISH CEILING HEIGHT ABOVE THE FINISH FLOOR INDICATED ON THE DRAWING.
- REFER TO INTERIOR FINISH SCHEDULE FOR CEILING HEIGHTS.
- LIGHT FIXTURES SHALL NOT BE INSTALLED ABOVE ANY SPRINKLER BRANCH LINES.

CASCO + R5
 12 Sunner Drive, Suite 100,
 St. Louis, MO 63143
 821.1100

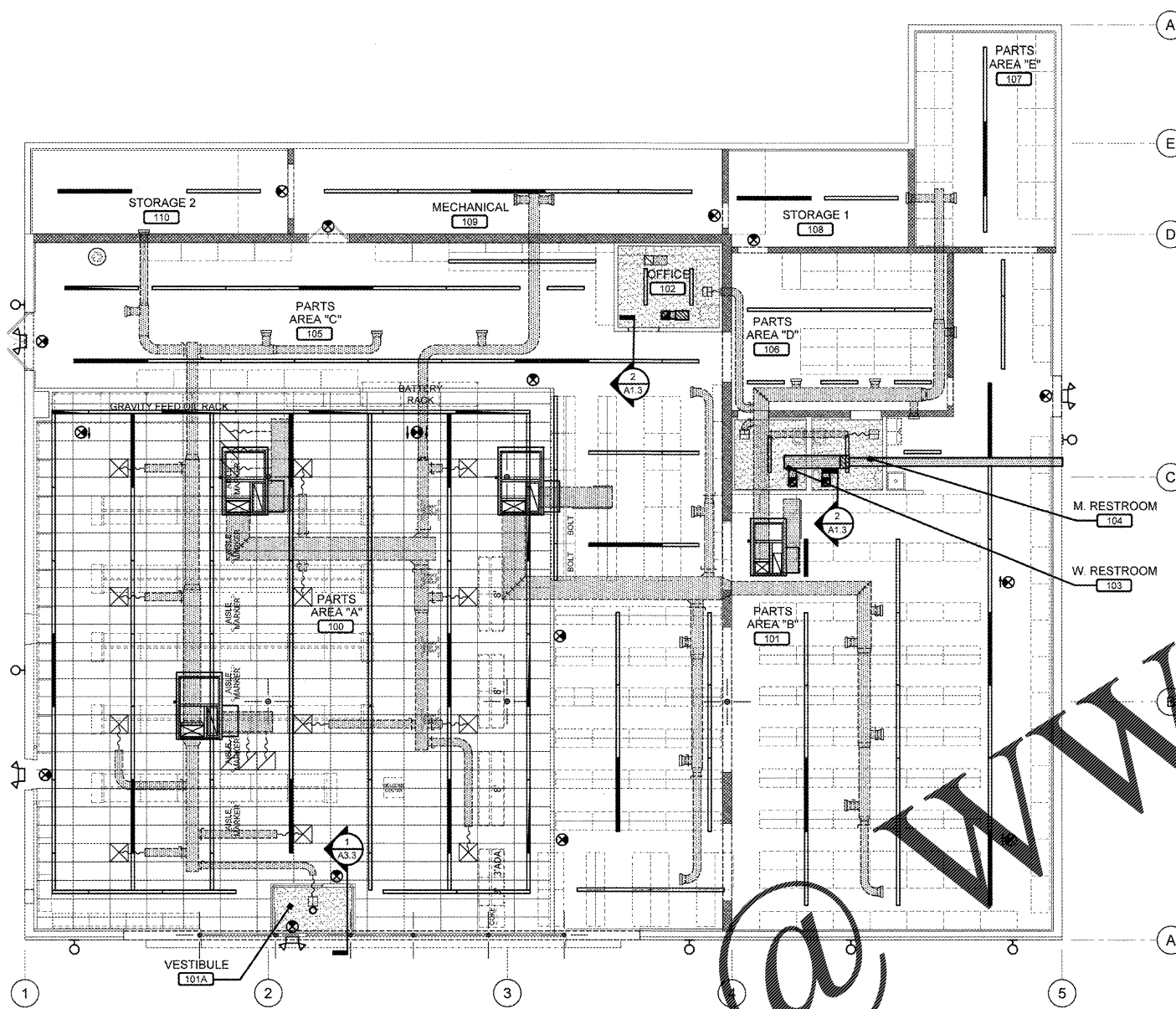
REVISIONS:

SYMBOLS LEGEND

ROOM NAME	ROOM NUMBER, REFER TO INTERIOR FINISH SCHEDULE	SYMBOL	DESCRIPTION
MECHANICAL SUPPLY DIFFUSER (4-WAY)		[Symbol]	MECHANICAL SUPPLY DIFFUSER (4-WAY)
MECHANICAL SUPPLY DIFFUSER (1-WAY)		[Symbol]	MECHANICAL SUPPLY DIFFUSER (1-WAY)
MECHANICAL RETURN AIR GRILLE		[Symbol]	MECHANICAL RETURN AIR GRILLE
MECHANICAL EXHAUST REGISTER		[Symbol]	MECHANICAL EXHAUST REGISTER
ELECTRICAL SURFACE CEILING STRIP LIGHT		[Symbol]	ELECTRICAL SURFACE CEILING STRIP LIGHT
ELECTRICAL SURFACE CEILING STRIP NIGHT LIGHTING		[Symbol]	ELECTRICAL SURFACE CEILING STRIP NIGHT LIGHTING
ELECTRICAL RECESSED CEILING LIGHT		[Symbol]	ELECTRICAL RECESSED CEILING LIGHT
ELECTRICAL SURFACE WALL LIGHT		[Symbol]	ELECTRICAL SURFACE WALL LIGHT
ELECTRICAL EMERGENCY LIGHTING		[Symbol]	ELECTRICAL EMERGENCY LIGHTING
ELECTRICAL "EXIT" SIGN		[Symbol]	ELECTRICAL "EXIT" SIGN
ELECTRICAL DIRECTIONAL "EXIT" SIGN		[Symbol]	ELECTRICAL DIRECTIONAL "EXIT" SIGN



2 WALL/CLG. SECTION
 SCALE: 1/2" = 1'-0"



1 REFLECTED CEILING PLAN
 A1.3 SCALE: 1/8" = 1'-0"



Order Plans @

O'Reilly AUTO PARTS

PROJECT:
RE-MODEL O'REILLY AUTO PARTS STORE
 103 E. GORDON AVE.
 GORDONSVILLE, VA 22942
REFLECTED CEILING PLAN

Professional of Record
 MARK S. BROMMEIER
 Lic. No. 110384
 Exp. 12/31/2019

DRAWN: RLJ
 CHECKED: MGC
 DATE: 10-17-2018
 JOB NO.: 118168 (GDV)
 SHEET:

A1.3

COPYRIGHT 2018 - DESIGNS, DRAWINGS AND SPECIFICATIONS ARE INSTRUMENTS OF SERVICE AND ARE THE PROPERTY OF THE DESIGN PROFESSIONAL. REPRODUCTION PROHIBITED WITHOUT THE EXPRESSED WRITTEN CONSENT OF THE DESIGN PROFESSIONAL.