

# O'Reilly

# AUTO PARTS

Re-Model O'Reilly Auto Parts Store  
103 E. GORDON AVE.  
GORDONSVILLE, VIRGINIA 22942

CASCO + R5  
12 Sunnen Drive, Suite 100,  
St. Louis, MO 63143  
821.1100

REVISIONS:

### ABBREVIATIONS LEGEND

AFP ABOVE FINISHED FLOOR	INSL INSULATE
AC ACROUSTICAL	INT INTERIOR
ACG AIR CONDITIONING	JST JOIST
ALT ALTERNATE	JT JOINT
AL ALUMINUM	JNT JOINT
ALUM ALUMINUM	KT KITCHEN
ANB ANCHOR BOLT	LH LEFT HAND
ARCH ARCHITECT (URAL)	LF LINEAL FOOT
BSMT BASEMENT	LT LENGTH
BRG BEARING	L LIVE LOAD
BM BENCH MARK	M MACHINE
BLK BLOCK	MFR MANUFACTURER
BLDG BUILDING	MAS MASONRY
BLDG BUILDING	MO MASONRY OPENING
BD BOARD	MOX MASONRY
BW BOTH WAYS	MED MECHANICAL
BTM BOTTOM	MGR MODIFIED BITUMEN ROOFING
BF BOTTOM OF FOOTING	MET METAL
BOT BOTTOM	MTL METAL
BOF BOTTOM OF FOOTING	MTR METERS
BRK BRICK	MW MILLWORK
BLDG BUILDING	MIN MINIMUM
BUP BUILT UP ROOFING	MIS MISCELLANEOUS
CAB CABINET	MT MOUNTED (IND)
CLC CEILING	NOA NOMINAL
CL CENTER LINE	N NORTH
CC CENTER TO CENTER	NIC NOT IN CONTRACT
CLR CLEAR	NTS NOT TO SCALE
COA COLUMN	OC ON CENTER(S)
CONC CONCRETE	OPG OPENING
CMU CONCRETE MASONRY UNIT	OPH OPPOSITE HAND
CONSTR CONSTRUCTION	OD OUT TO OUT
CONTR CONTRACTOR	OH OVERHEAD
CONT CONTINUOUS	PC PIECE
CONTR CONTRACTOR	PNT PAINTED
COFL COUNTER FLASHING	FTD PAINTED
CRS COURSE(S)	PNG PARKING
CSB COUNTERSINK	PLAM PLASTIC LAMINATE
CRS COURSE(S)	PL PLATE
CY CUBIC FOOT	PWD PLYWOOD
CLC CEILING	PVC POLYVINYL CHLORIDE
DL DEAD LOAD	PFZ POUNDS PER SQUARE FT.
DEM DEMOLISH, DEMOLITION	PSI POUNDS PER SQUARE IN.
DTL DETAIL	PT PRESSURE TREATED
DIAG DIAGONAL	PL PROPERTY LINE
DNM DIAMETER	PL REMOVE
DRM DIMENSION	RET RETURN
DR DOOR	RH RIGHT HAND
DS DOWN SPOUT	RD ROOF DRAIN
DRAIN DRAIN	RFG ROOFING
DND DRAWING	RFS ROOM
DF DRINKING FOUNTAIN	RO ROUGH OPENING
E EAST	RSL ROUGH SEALANT
EINS EXTERIOR INSULATION AND FINISH SYSTEM	SNT SEALANT
ELEC ELECTRICAL	SEC SECTION
EWIC ELECTRIC WATER COOLER	SECT SECTION
EL ELEVATION	SHTH SHEATHING
ELEV ELEVATION	SHT SHEET
EMER EMERGENCY	SM SIMILAR
EQ EQUAL	SC SOLID CORE
EXG EXISTING	S SOUTH
EXIST EXISTING	SP SQUARE FOOT
EXP EXPOSED	SQ SQUARE INCH
EXT EXTERIOR	SY SQUARE YARD
FOF FACE OF FINISH	STD STANDARD
FO FACE OF FINISH	STO STORAGE
FDM FACE OF MASONRY	SUS SUSPENDED
FCB FACE OF BRUSH	SVM SYMMETRY (CAL)
FIN FINISH(ED)	TEL TELEPHONE
FFZ FINISHED FLOOR ELEV.	TV TELEVISION
FEL FINISHED FLOOR LINE	TKK THICKNESS
FE FIRE EXTINGUISHER	T&G TONGUE & GROOVE
FEC FIRE EXTINGUISHER CABINET	TOS TOP OF STEEL
FI FIRE TREATED	TOW TOP OF WALL
FLG FLASHING	TV TYPICAL
FLR FLOOR	UDN UNLESS OTHERWISE NOTED
FD FLOOR DRAIN	UNO UNLESS NOTED OTHERWISE
FTG FOOTING	VERT VERTICAL
FDN FOUNDATION	VNT VINYL TILE
FNDN FOUNDATION	WSC WANSBOT
FRS FURFURING	WC WATER CLOSET
GAGE GAGE	WFB WELDED WIRE FABRIC
GALV GALVANIZED	W WEST
GC GENERAL CONTRACTOR	WH WETL. WIDE
GL GLASS, GLAZING	WN WINDOW
GP GYPSUM	WO WITHOUT
GYP GYPSUM	WTD WITHOUT
GWB GYPSUM WALL BOARD	W WOOD
HVAC HEATING/VENTILATING/AIR COND.	
HGT HEIGHT	
HC HOLLOW CORE	
HM HOLLOW METAL	
HK HOOK(S)	
HOR HORIZONTAL	
HB HOSE BIBB	
INS INSULATE(OR, ION)	

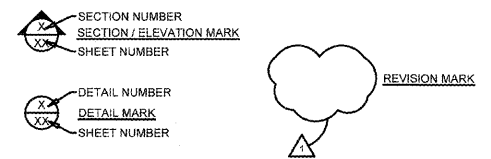
### OWNER OR TENANT



O'REILLY AUTOMOTIVE STORES, INC.  
A MISSOURI CORPORATION  
CORPORATE OFFICES  
233 SOUTH PATTERSON  
SPRINGFIELD, MISSOURI 65802  
417-862-2674 PHONE

**BIDDING INFORMATION:**  
REFER TO OWNER'S WEB SITE:  
HTTP://WWW.OREILLYPLANROOM.COM  
  
NOTE: REFER TO CURRENT PROJECTS LIST, LOCATED  
AT BOTTOM OF SIGN IN PAGE, FOR INVITED GENERAL  
CONTRACTORS.  
  
ALL SUB-CONTRACTOR BIDS TO BE SUBMITTED TO  
INVITED GENERAL CONTRACTORS ONLY.  
  
CONTACT OWNER'S DESIGNATED REPRESENTATIVE  
FOR ADDITIONAL PROJECT INFORMATION.

### SYMBOLS LEGEND



### SIGNAGE NOTE

ALL SIGNAGE TO BE PROVIDED UNDER SEPARATE PERMIT APPLICATION

### NEW BUILDING MATERIALS

ALL NEW BUILDING MATERIALS TO BE OF NON-COMBUSTIBLE OR WOOD FIRE  
RETARDANT TREATED MATERIALS

### ROOF INSULATION

CASCO ASSUME EXISTING ROOF RIGID INSULATION ABOVE METAL DECK G/C  
TO CONFIRM AT BEGINNING OF CONSTRUCTION

### PROJECT DESCRIPTION

REMODEL OF AN EXISTING RETAIL STORE. SCOPE IS TO REMOVE EXISTING  
CEILING, INTERIOR WALLS, AND FINISHES. REQUIRED INSTALL NEW  
VESTIBULE AND "GROVE" GLAZING. INSTALL NEW HOLLOW METAL  
DOORS. RE-BUILD LOADING DOCK AND DEMO PORTAL ENTRY.

### BUILDING CODE

BUILDING OFFICIAL CONTACT NUMBER:	(540) 872-4574
COUNTY:	ORANGE
ZIP CODE:	22942
<b>GOVERNING CODES AND ORDINANCES</b>	
BUILDING CODE:	2012 VIRGINIA UNIFORM STATEWIDE BUILDING CODE
REHABILITATION CODE:	2012 VIRGINIA REHABILITATION CODE
ACCESSIBILITY CODE:	2012 ICC / ANS I A117.1
PLUMBING CODE:	2012 INTERNATIONAL PLUMBING CODE
MECHANICAL CODE:	2012 INTERNATIONAL MECHANICAL CODE
ELECTRICAL CODE:	2011 NATIONAL ELECTRIC CODE
FIRE CODE:	2012 INTERNATIONAL FIRE CODE
ENERGY CODE:	2012 INTERNATIONAL ENERGY CONSERVATION CODE

<b>USE GROUP &amp; CONSTRUCTION TYPE</b>	
USE GROUP:	M (MERCANTILE)
CONSTRUCTION TYPE:	V-B (NON-COMBUSTIBLE / UNPROTECTED) SPRINKLERED
<b>BUILDING HEIGHT:</b>	17'-2" (TOP OF PORTAL)
<b>TOTAL GROSS BUILDING AREA:</b>	10,030 SF

<b>FIRE PROTECTION SYSTEMS</b>	
AUTOMATIC SPRINKLER SYSTEM:	NOT REQUIRED
PORTABLE FIRE EXTINGUISHERS:	REQUIRED
FIRE ALARM SYSTEM:	NOT REQUIRED
MONITORING:	NOT REQUIRED
(REFER TO SCOPE OF WORK SHEET)	
AUTOMATIC FIRE DETECTION SYSTEM:	
FIXTURE RACK ANCHORING:	NOT REQUIRED

NOTE:  
REFER TO SHEET A1.2 EGRESS PLAN FOR EGRESS PATH AND EGRESS WIDTH  
CALCULATIONS

### OCCUPANCY LOAD SUMMARY

ROOM	AREA (S.F.)	AREA (S.F.) PER OCCUPANT	OCCUPANTS PER AREA
PARTS AREA "A"	3442	60	57.37
PARTS AREA "B"	3077	300	10.26
PARTS AREA "C"	1149	300	3.83
PARTS AREA "D"	437	300	1.46
PARTS AREA "E"	402	300	1.34
STORAGE/UTILITY	1030	300	3.43
OFFICE/TOILET ROOMS	493	100	4.93
<b>TOTAL BUILDING OCCUPANCY LOAD</b>			82.61
<b>TOTAL AREA GROSS (S.F.)</b>			10030

### SHEET INDEX

SHEET NUMBER	SHEET NAME
T1	COVER SHEET
SV1	SITE SURVEY (FOR REFERENCE ONLY)
C1	EXISTING CONDITIONS AND REMOVALS PLAN
C2	GRADING DRAINAGE AND EROSION CONTROL PLAN
C3	SITE, PAVING AND UTILITY PLAN
C4	CIVIL DETAILS
C4.1	CIVIL DETAILS
AS1.1	ARCHITECTURAL GENERAL SPECIFICATIONS
AS1.2	ARCHITECTURAL GENERAL SPECIFICATIONS
AS1.3	ARCHITECTURAL GENERAL SPECIFICATIONS
AS1.4	ARCHITECTURAL GENERAL SPECIFICATIONS
AS1.5	ARCHITECTURAL GENERAL SPECIFICATIONS
AS1.6	ARCHITECTURAL GENERAL SPECIFICATIONS
AS1.7	ARCHITECTURAL GENERAL SPECIFICATIONS
AS1.8	ARCHITECTURAL GENERAL SPECIFICATIONS
AS1.9	ARCHITECTURAL GENERAL SPECIFICATIONS
D1.1	DEMOLITION FLOOR PLAN
D1.2	DEMOLITION ROOF PLAN
D1.3	DEMOLITION EXTERIOR ELEVATIONS
A1.1	FLOOR PLAN
A1.2	INTERIOR FINISH PLAN
A1.3	REFLECTED CEILING PLAN
A1.4	ROOF PLAN
A2.1	EXTERIOR ELEVATIONS
A3.1	EXTERIOR DETAILS
A3.2	STAIR DETAILS
A3.3	VESTIBULE DETAILS
A3.4	RAISED LOADING PLATFORM
A4.1	RESTROOM ACCESSORIES & ELEVATIONS
A4.2	WALL TYPES & DETAILS
A4.3	INTERIOR SECTIONS AND DETAILS
A5.1	DOOR AND WINDOW SCHEDULES
A5.2	STOREFRONT ELEVATIONS
S1	GENERAL NOTES
S2	FOUNDATION PLAN AND DETAILS
S3	ROOF FRAMING PLAN AND DETAILS
P1	PLUMBING PLAN
P2	PLUMBING DETAILS
M1	HVAC PLAN
M2	HVAC SCHEDULES
M3	SCHEMATIC / INSTALLATION
E1	LIGHTING PLAN
E2	POWER PLAN
E3	ELECTRICAL SCHEDULES
E4	ELECTRICAL NOTES
EM1.0	GRID POINT EMS
EM1.1	GRID POINT EMS
EM1.2	GRID POINT EMS
SG1.1	SITE SIGNAGE PLAN
SG1.2	SITE SIGNAGE DETAILS
SG1.3	SITE SIGNAGE DETAILS
SG2.1	BUILDING EXTERIOR SIGNAGE

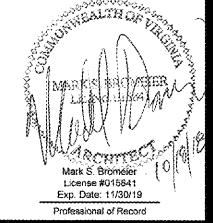
### AUTO PARTS



PROJECT:  
RE-MODEL O'REILLY AUTO PARTS STORE  
103 E. GORDON AVE.  
GORDONSVILLE, VA 22942

CORPORATE OFFICES  
233 SOUTH PATTERSON  
SPRINGFIELD, MISSOURI 65802  
417-862-2674 PHONE

COVER SHEET



DRAWN: RLJ  
CHECKED: MGC  
DATE: 10-17-2018  
JOB NO.: 118168 (GDV)  
SHEET:

# T1

COPYRIGHT 2018 - DESIGNS, DRAWINGS AND SPECIFICATIONS ARE INSTRUMENTS OF SERVICE AND ARE THE PROPERTY OF THE DESIGN PROFESSIONAL. REPRODUCTION PROHIBITED WITHOUT THE EXPRESSED WRITTEN CONSENT OF THE DESIGN PROFESSIONAL.