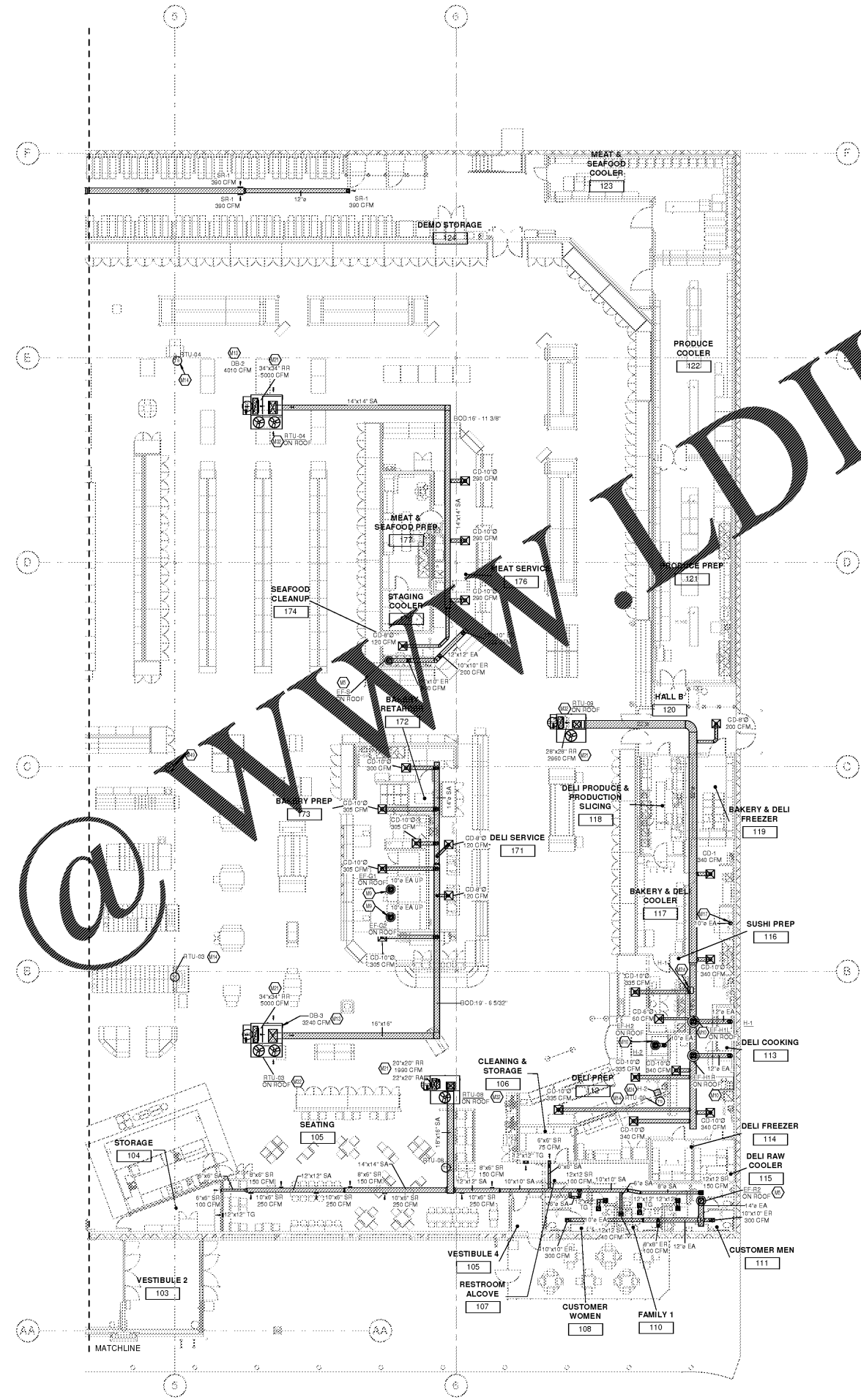


KEYED NOTES

- M6 DUCT UP TO OPENING THROUGH ROOF CAPPED WITH CURB AND KROGER FURNISHED EXHAUST FAN.
- M9 B VENT DUCT UP FROM RACK OVEN VENT COLLAR THROUGH ROOF. DUCTS ARE ONLY TO OFFSET ABOVE AGT. THESE DUCTS ARE TO BE RUN STRAIGHT AND VERTICAL, WHEN VISIBLE TO SALES FLOOR. REFER TO DETAIL HSD-1 FOR ADDITIONAL INFORMATION.
- M10 GREASE DUCT FROM EXHAUST HOOD TO OPENING THROUGH ROOF. PER NIPSA BE MECHANICAL CONTRACTOR TO INSTALL PROVIDED HINGE KIT. DUCTWRAP IS TO RUN THE ENTIRE LENGTH OF GREASE DUCT FROM CEILING PENETRATION TO AN REFERENCE HSD-4 FOR ADDITIONAL INFORMATION.
- M13 DROP BOX DIFFUSER SYSTEM. REFER TO DIFFUSER SCHEDULE FOR ASES MODEL NUMBERS AND QUANTITIES. REFER TO FLOOR PLANS FOR THROW DIRECTIONS AND AREAS. REFER TO DETAIL HSD-1 FOR INSTALLATION.
- M14 TEMPERATURE SENSOR FOR RTU FURNISHED BY BUILDING CONTROL PROVIDER. ROUTE CONTROL WIRING THROUGH RTU AND BACK TO BUILDING CONTROL PANEL.
- M17 LW-50 VENT KIT INCLUDED WITH UNIT AND SUPPLIED BY HOBART. VENT KIT AUTOMATICALLY REMOVES STEAM/CONDENSATION AT THE COMPLETION OF THE WAREWASH CYCLE. WAREWASH DOOR WILL NOT OPEN UNTIL THIS PROCESS IS COMPLETED. MECHANICAL CONTRACTOR TO CONNECT STAINLESS STEEL DUCT TO THE VENT KIT OPENING THROUGH ROOF. REFER TO HSD-4 FOR ADDITIONAL INFORMATION.
- M21 RETURN AIR GRILLE IN SIDE OF DUCT DROP, TRUS 80F WITH 1" HIGH SCREENS OR APPROVED EQUAL.
- M24 HOOD ANULS, PULL STATION, COORDINATE FINAL LOCATION WITH ELECTRICAL CONTRACTOR. PROVIDE NAMEPLATE AT STATION WITH HOOD # AND LOCATION. REFER TO HSD-4 FOR ADDITIONAL INFORMATION.
- M32 ROOF TOP CURB FURNISHED BY KROGER AND INSTALLED BY MECHANICAL CONTRACTOR. BALANCE TO BE PROVIDED BY MECHANICAL CONTRACTOR.
- M40 FURNISHING AND INSTALLATION OF FURNISHED BUILDING CONTROL PROVIDER. RETAIL PROVIDER TO PROVIDE RETAIL PROBE. REFER TO HSD-4 FOR ADDITIONAL INFORMATION.



1 HVAC FLOOR PLAN - NORTH
3/32" = 1'-0"



OWNERSHIP OF INSTRUMENTS OF SERVICE
 All rights, claims, specifications, conditions, terms, or fees, held data, notes, or information, in any form, including but not limited to, electronic, mechanical, photocopying, recording, or by any information storage and retrieval system, are reserved by the Consultant. No part of this document may be reproduced, stored in a retrieval system, or transmitted in any form or by any means, electronic, mechanical, photocopying, recording, or by any information storage and retrieval system, without the prior written permission of the Consultant. The Consultant shall not be held liable for any damages or claims arising out of the use of this document.

Order Plans @ WWW.WLDILLING.COM

CONSULTANTS
CR
 architecture + design
 creating extraordinary places
 www.cr-architects.com
 500-492-6842

MECHANICAL/ELECTRICAL ENGINEERS
 WWW.KHENGERS.COM
SEKLH
 ENGINEERS
 150 ALEXANDRIA PARK SUITE 11
 FT. THOMAS, KENTUCKY 40325
 502-254-9255
 502-442-8286 FAX

OWNER

 DATE: 10/25/18
 ISSUE: 8% OWNER REVIEW
 11/08/18 100% DPERMIT

DATE	REVISION

PROJECT TITLE
**KROGER STORE
 GA685**
 3559 CHAMBLEE TUCKER RD
 TUCKER, GA
 COMMISSIONING: 5/17/2018
 ISSUE DATE: 11/08/2018
 SHEET TITLE
**HVAC FLOOR
 PLAN - NORTH**
 SHEET NO.
M1.1b
 ©2017 Architectural Resources, Inc.