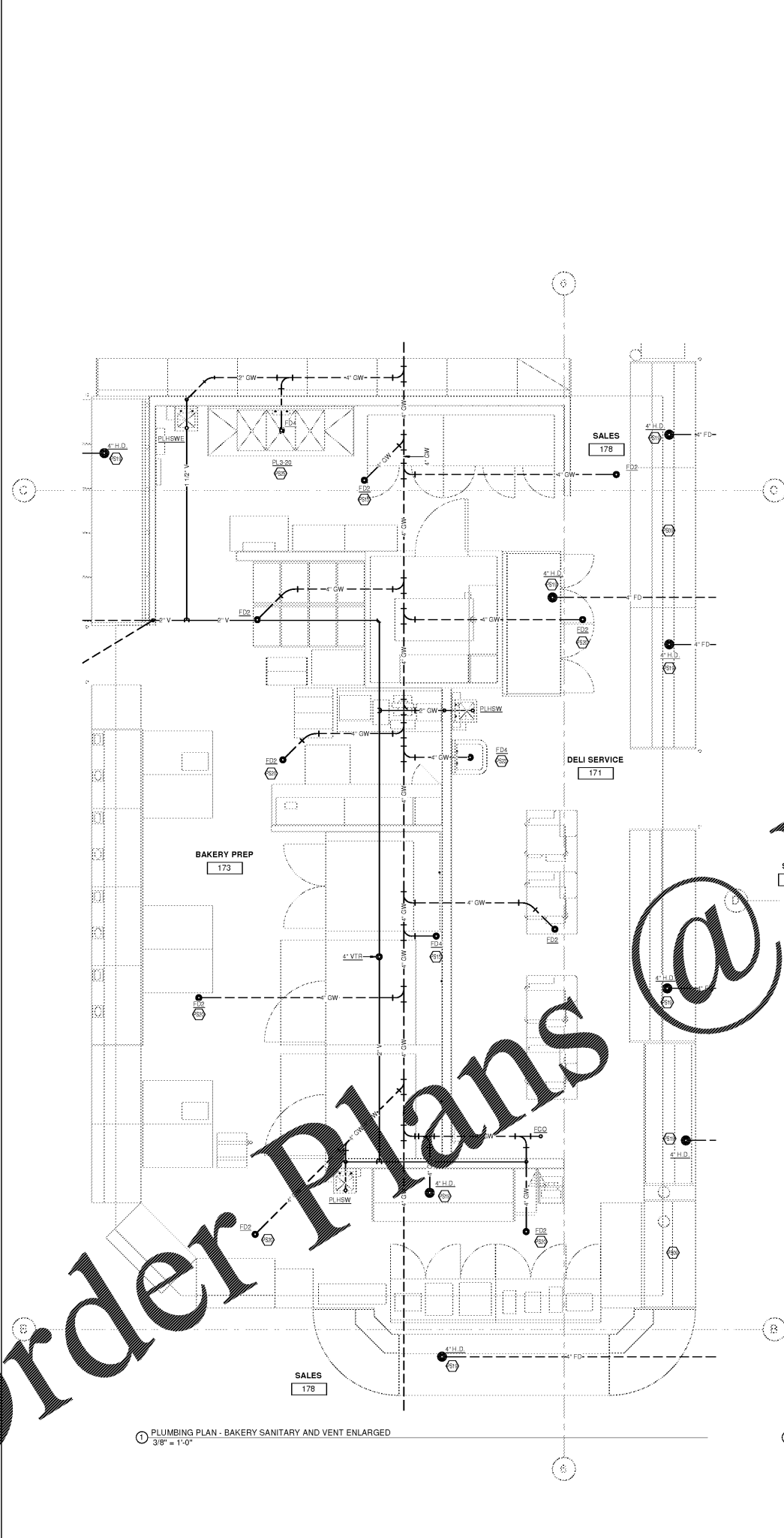
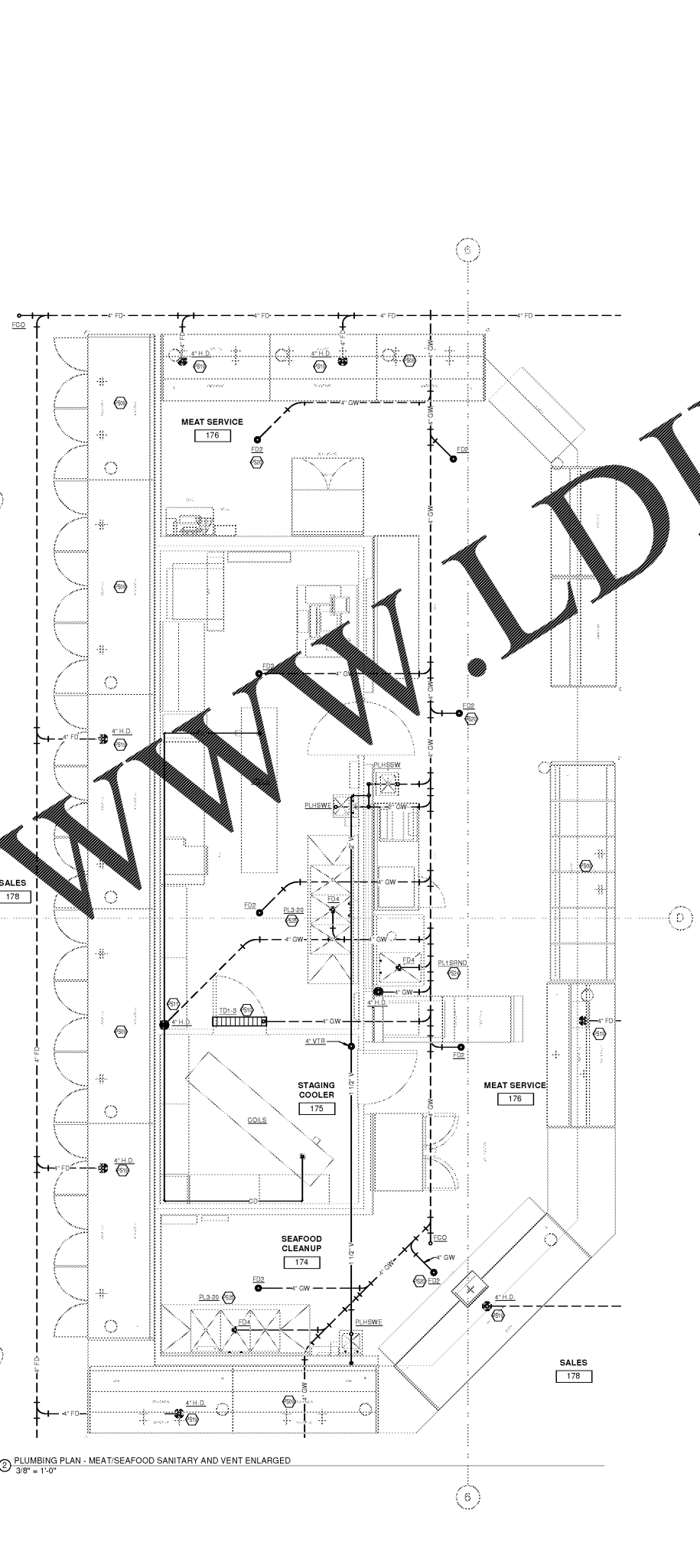


OWNER'S USE ONLY  
 OF SERVICE  
 ALL RIGHTS RESERVED  
 11/20/2018 1:01:58 PM



1 PLUMBING PLAN - BAKERY SANITARY AND VENT ENLARGED  
 3/8" = 1'-0"



2 PLUMBING PLAN - MEAT/SEAFOOD SANITARY AND VENT ENLARGED  
 3/8" = 1'-0"

- KEYED NOTES**
- PS09 TIE THE DRAIN FROM THIS CASE INTO THE DRAIN OF A SIMILAR ADJACENT CASE ABOVE THE SLAB WITH AIR GAP.
  - PS10 P.C. MUST COORDINATE THE FINAL TRENCH DRAIN LOCATIONS WITH THE FINAL COOLER BOX PLACEMENT/INSTALLATION PRIOR TO FINAL CONCRETE POUR. THE TRENCH DRAINS MUST BE FINISHED SMOOTH, IMPERVIOUS, AND EASILY CLEANABLE.
  - PS11 REFRIGERATION/FREEZER/FAN COIL CONDENSATE DRAIN. PROVIDE AIR GAP.
  - PS12 PROVIDE 20' OF CAST IRON WASTE PIPING AFTER DISHWASHER & COMBITHERM CONVECTION OVENS.
  - PS13 NEW HUB DRAIN TO SERVE REFRIGERATED CASES. REFER TO DETAILS PSD-1 AND PSD-1 ON SHEET PE-1 FOR INSTALLATION (TYPICAL).
  - PS20 AREA DRAIN TO SERVE PIP AREA. REFER TO PSD-2 FOR INSTALLATION (TYPICAL).
  - PS22 REFER TO DETAILS PSD-5A AND PSD-14B FOR INSTALLATION OF 3-COMP SINK (TYPICAL).
  - PS24 REFER TO DETAILS PSD-5B AND PSD-14B FOR INSTALLATION OF SEAFOOD SINK.
  - PS25 REFER TO DETAILS PSD-7A AND PSD-14B FOR INSTALLATION OF 3-COMP SINK (TYPICAL).

Order Plans @ www.LDILine.com

www.LDILine.com

CINCINNATI 600 Vine Street, Suite 200, Cincinnati, OH 45202  
 DENVER 1475 Broadway, Suite 200, Denver, CO 80202  
 SEATTLE 805 2nd Avenue, Suite 200, Seattle, WA 98104  
 WWW.LDIDLINE.COM  
 513.721.8090  
 303.449.4949  
 206.465.4949

**CR** architecture + design

creating extraordinary places  
 www.cr-architects.com  
 502-492-4242

CONSULTANTS

MECHANICAL/ELECTRICAL ENGINEERS  
 WWW.KHENGERS.COM  
 LEWINGTON, KENTUCKY  
 LOUISVILLE, KENTUCKY  
 NEW YORK, NEW YORK  
 WWW.KHENGERS.COM  
 150 ALEXANDRIA PARK, SUITE 111  
 FT. THOMAS, KENTUCKY 40310  
 502-442-8255  
 908-442-8256 FAX

**EXEKLH** ENGINEERS

OWNER

**Kroger**

DATE: 10/25/18  
 11/08/2018  
 ISSUE: 5th OWNER REVIEW  
 10A/SD/PERMIT

DATE	REVISION

PROJECT TITLE

**KROGER STORE GA685**

3559 CHAMBLEE TUCKER RD  
 TUCKER, GA

COMMISSIONING: 5/17/21  
 ISSUE DATE: 11/08/2018  
 SHEET TITLE: ENLARGED PLUMBING PLANS - WASTE AND VENT  
 SHEET NO: P4.1b  
 ©2019 Architectural Digest, Inc.

2" REFERENCE LINE