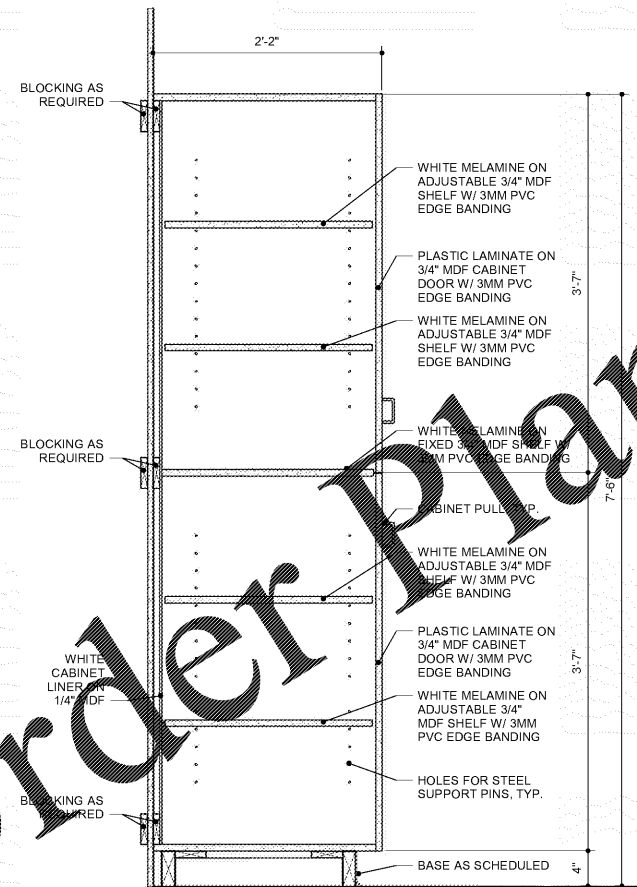


C:\Users\cbkerr\Documents\Revit\LOCAL17-072\_Northport Middle School\_A18\_CENTRAL\_cblerr.rvt

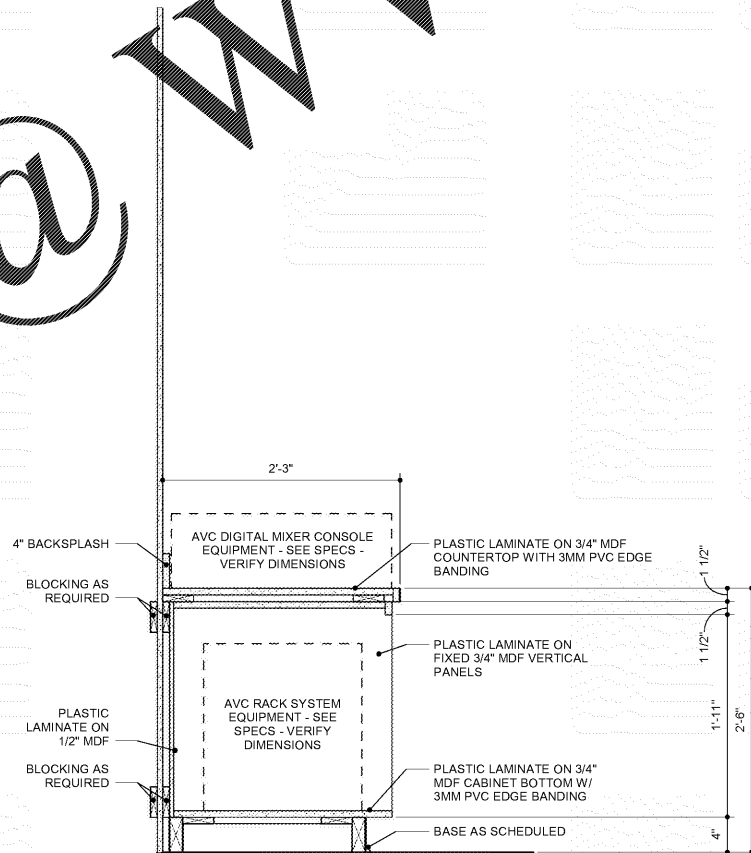
11/19/2018 2:06:35 PM

Copyright Ward Scott Architecture, Inc. All Rights Reserved



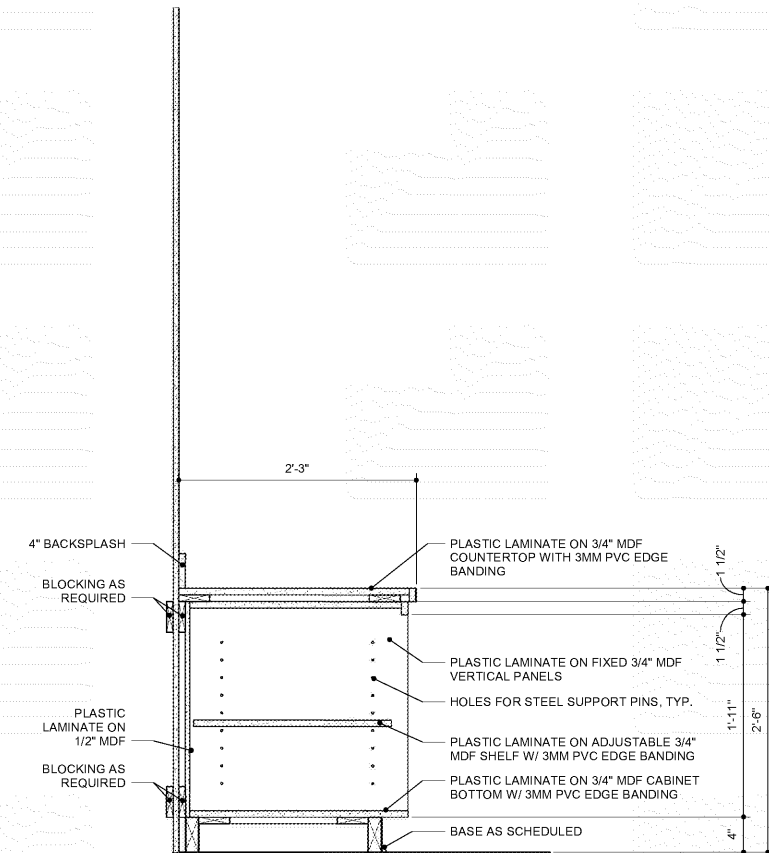
NOTE: PLASTIC LAMINATE ON ALL EXPOSED SURFACES. CABINETS TO HAVE 3MM PVC EDGE BANDING ON ALL EDGES.

3 MEDIA CENTER WORKROOM TALL CABINET SECTION  
1 1/2" = 1'-0"



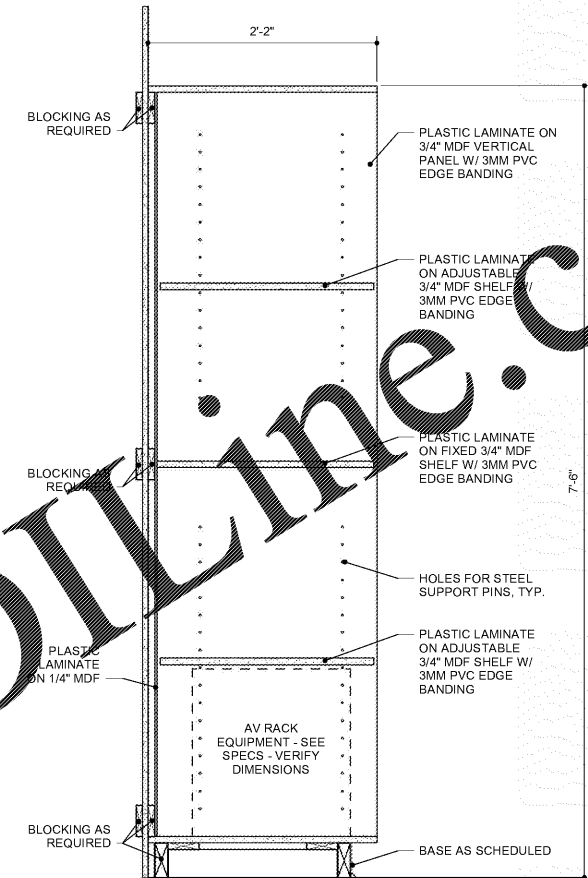
NOTE: PLASTIC LAMINATE ON ALL EXPOSED SURFACES. CABINETS TO HAVE 3MM PVC EDGE BANDING ON ALL EDGES.

2 BAND/CHORAL BOOKSHELVES CABINET SECTION WITH AV RACK  
1 1/2" = 1'-0"



NOTE: PLASTIC LAMINATE ON ALL EXPOSED SURFACES. CABINETS TO HAVE 3MM PVC EDGE BANDING ON ALL EDGES.

1 BAND/CHORAL BOOKSHELVES CABINET SECTION  
1 1/2" = 1'-0"



NOTE: PLASTIC LAMINATE ON ALL EXPOSED SURFACES. CABINETS TO HAVE 3MM PVC EDGE BANDING ON ALL EDGES.

4 MEDIA CENTER WORKROOM TALL CABINET SECTION  
1 1/2" = 1'-0"

**WARD SCOTT ARCHITECTURE**  
 5 Seven Street  
 Tuscaloosa, AL 35701  
 www.ward-scott.com

NORTHPORT SCHOOL  
 TUSCALOOSA COUNTY BOARD OF EDUCATION  
 NORTHPORT, ALABAMA

CONSTRUCTION DOCUMENTS

DATE: 11-16-18  
 PROJ. NO: 17-072

REVISIONS

#	DESC	DATE

INTERIOR SECTIONS

A436