

CHAPTER 8: INTERIOR FINISHES

803.1.1 INTERIOR WALL AND CEILING FINISH MATERIAL
 ALL INTERIOR WALL AND CEILING FINISH MATERIAL SHALL BE CLASSIFIED IN ACCORDANCE WITH ASTM E84 OR UL 723. ALL FINISH MATERIAL SHALL BE CLASS A WITH THE FOLLOWING FLAME SPREAD AND SMOKE-DEVELOPED INDEX:

Class A = Flame spread index 0-25, smoke developed index 0-450.

CHAPTER 10: MEANS OF EGRESS

Table 1004.1 (F.B.C.), Table 7.3.1.2 (F.F.P.C.) Minimum Occupant Load
 Institutional (I-1) 120 sf/gross

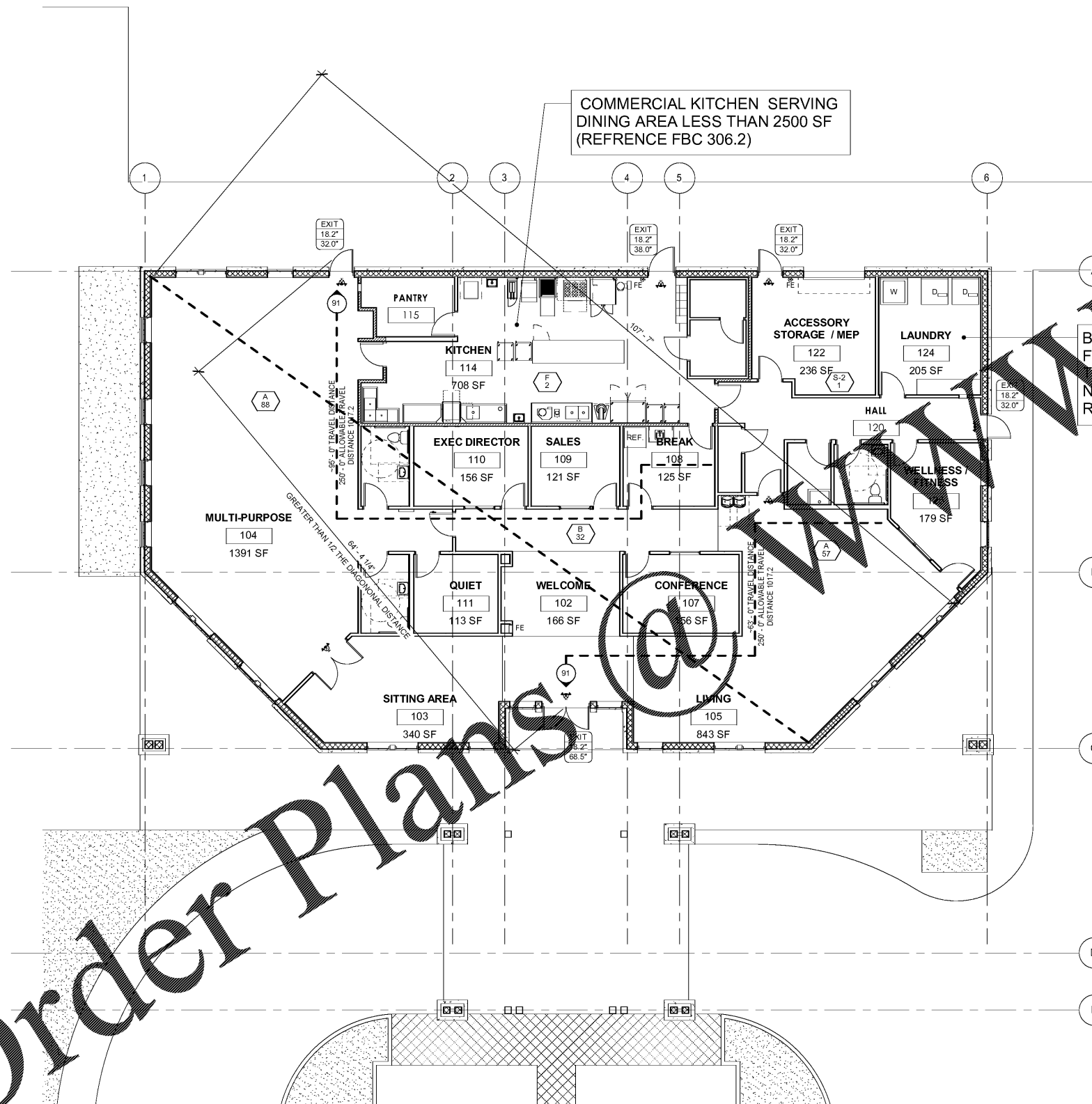
Table 1017.1: Group I-1 - INSTITUTIONAL (F.B.C.), Section 302.6.3.2 (F.F.P.C.)
 Travel distance: 250'-0" with an automatic sprinkler system.
 F.F.P.C. Section 302.6.2
 Traveled distance within a dwelling unit to a corridor door shall not exceed 125 ft in buildings protected throughout by an approved supervised automatic sprinkler system.
 F.F.P.C. Section 7.6 Open Stairways
 Travel distance shall include travel on the stair measured in the plane of the stair nosing in addition to distance traveled to reach the stair.
 Section 1020.4 (F.B.C.), Section 302.5.4.2 (F.F.P.C.): Dead end = 20'-0"
 Table 7.3.3.1 (F.F.P.C.) Capacity Factors
 Egress width: Level: 0.2' (doors, ramp and corridors) 14 occ x 2' = 2.8' < 32' Min doors.
 Stairs: 0.3', 14 occ x 3' = 4.2' < 36' Min.
 Corridors: 44' Min.
 Stair Width: 48" minimum between handrails when area of rescue is required.

Sect 1015: Exits or Exit Access Doorways form spaces.
 Table 1015.1 Spaces with One exit or Exit Access Doorway
 Occupancy Group R-2 maximum occupant load = 49
 Common path of Travel within unit does not exceed 125 feet.
 Common path of Egress Travel shall not exceed 35 feet.
 F.F.P.C. Section 302.4.2. A single exit shall be permitted from a dwelling unit provided the dwelling unit has direct access to an outside stair that complies with 7.2.2 and serves a max of two units both of which are located on the same story.
 F.F.P.C. Section 302.4.4 A single exit shall be permitted in buildings where the number of stories does not exceed two, provided that all of the following conditions are met:
 1) There are four or fewer dwelling units per story.
 2) The building is protected throughout by an approved supervised automatic sprinkler system in accordance with 30.3.5.
 3) The exit stairway does not serve more than one half story below the level of discharge.
 4) The travel distance from the entrance door of an apartment does not exceed 35 feet.
 5) The exit stairway is completely enclosed or protected from the rest of the building by barriers having a minimum of 1 hour fire resistance construction.
 6) All openings between the exit stairway enclosure and the building are protected with self-closing door assemblies having a minimum 1 hour fire protection rating.
 7) All corridors serving as access routes have a minimum 1 hour fire resistance rating.
 8) Horizontal and vertical separation having a minimum 2 hour fire resistance rating is provided between dwellings.

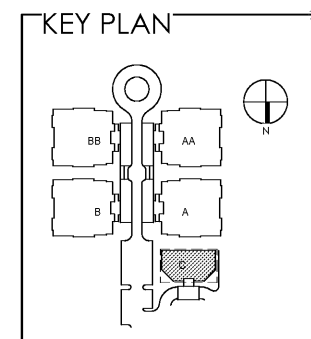
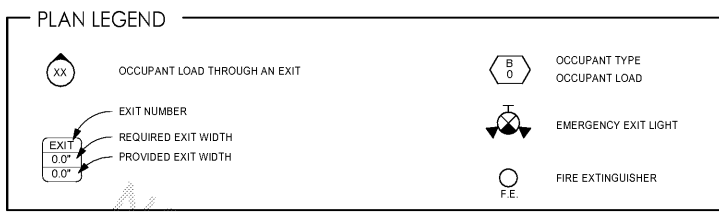
Sect 1019: Exterior Egress Balconies shall be separated from the interior of the building by walls and opening protectives as required for corridors.
 Sect 1019.3: The top side of an egress balcony shall be at least 50 percent open, and the open area above the guardrails shall be distributed as to minimize the accumulation of smoke and toxic gases.
 1029.1: Except for Emergency escape and rescue openings from sleeping room are not required if building is equipped with an automatic sprinkler system.
 Sect 1029.6: All stairways shall be built of materials consistent with the types permitted for the type of construction of the building, except that wood stairways shall be permitted for all types of construction.
 FLOOR FIRE PREVENTION CODE, NFPA 1
 Sect 14.10.4 Accessible Means of Egress
 Areas accessible to people with severe mobility impairment, other than in existing buildings, shall have not less than two accessible means of egress, unless otherwise provided in 14.10.4.1.2 through 14.10.4.1.4

ALL CONSTRUCTION SHALL COMPLY WITH 2017 FLORIDA FIRE PREVENTION CODE (NFPA 1 & 101 2009 EDITION W/ SPECIFIC ADDITIONS AND DELETIONS)

BUILDING IS PROTECTED BY FIRE SPRINKLER SYSTEM, THEREFORE PER TABLE 509-NO FIRE SEPERATION REQUIRED.



- GENERAL NOTES
- SEE SHEET T1 FOR CODE INFORMATION.
 - PROVIDE FIRE EXTINGUISHERS PER 2004 FLORIDA FIRE PREVENTION CODE. FIRE EXTINGUISHERS TO BE LOCATED AT EACH EXIT. MOUNT FIRE EXTINGUISHER 5'-0" TOP OF EXTINGUISHER MAX. VERIFY FINAL LOCATIONS WITH LOCAL FIRE OFFICIAL.
 - FIRE EXTINGUISHER TYPE AND SIZE OF FIRE EXTINGUISHER PER NFPA 10 FOR OCCUPANCY/HAZARD REQUIREMENT. 2A10BC MINIMUM.
 - FINAL OCCUPANCY AND EXITING TO BE INDICATED IN FUTURE TENANT IMPROVEMENT DRAWINGS. EACH TRADE RESPONSIBLE FOR FIRE-STOPPING AROUND THEIR RESPECTIVE PENETRATIONS THROUGH A FIRE RATED ASSEMBLY.



OCCUPANT LOAD CALCULATION

USE GROUP	AREA DESCRIPTION	SQUARE FEET	SQUARE FOOT PER OCCUPANT	MAX OCCUPANTS	COMMENTS
A	ASSEMBLY - UNCONCENTRATED	2,168 SF	15 NET	145	
B	BUSINESS	3,133 SF	100 GROSS	32	
K	KITCHEN	764 SF	200 GROSS	5	
TOTAL		6,266 GSF		182	

MAX TRAVEL TO EXIT ACCESS 200' (NON-SPRINKLERED)
 MAX COMMON PATH OF TRAVEL 75'
 DEAD END CORRIDOR MAX 20' UNLIMITED OCC (NON-SPRINKLERED)
 FBC SECT 303.1.1 SMALL ASSEMBLY SPACES:
 A BUILDING OR TENANT SPACE USED FOR ASSEMBLY PURPOSES WITH AN OCCUPANT LOAD OF LESS THAN 50 PERSONS SHALL BE CLASSIFIED AS A GROUP B OCCUPANCY

Order Plans

WWW.LDNLIVING.COM

nioburstein
 nioburstein.com
 1345 Virginia Lee Circle | Brooksville, FL 34602 | (813) 400-2399
 Florida authorization # 0026001977 | 026001204
 www.nioburstein.com

09.01.18 PROGRESS NOT FOR CONSTRUCTION

DARRIN M. AZDELL, AIA, NCARB
 FL CCR #9241

These documents may not accurately reflect the final as-built conditions. It is the responsibility of the contractor to verify all layouts, dimensions and other related information. Errors may occur in the transmission of electronic files. OUTSIDEIN Architecture LLC, or the Architect is not responsible for any claims, damages or expenses arising out of the unauthorized use of the information contained in these documents. Drawing is NOT FOR CONSTRUCTION if professionals raised seal is not affixed. These documents and design remain the sole property of the architect and shall not be separated from the files, stock, duplicated or copied in whole or part without the written consent of the architect. Copyright © 2018, OUTSIDEIN Architecture LLC. All rights reserved.

ISSUE RECORD

03.26.18	DD SET
04.12.18	PRICING SET
09.01.18	85% CONSTRUCTION SET

MEMORY CARE COTTAGES OF NAPLES- COMMONS BUILDING
 WHITAKER ROAD - COLLIER COUNTY, FLORIDA

LIFE/SAFETY PLAN

A0.1

017.031 09/01/18