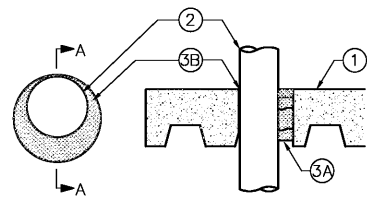


System No. F-A-1020
 F Rating - 3 HR.
 T Rating - 0 HR.



SECTION A-A

1. FLOOR ASSEMBLY - THE FIRE RATED UNPROTECTED CONCRETE AND STEEL FLOOR ASSEMBLY SHALL BE CONSTRUCTED OF THE MATERIALS AND IN THE MANNER SPECIFIED IN THE INDIVIDUAL D300 SERIES DESIGNS IN THE UL FIRE RESISTANCE DIRECTORY AND AS SUMMARIZED BELOW.

A. NORMAL WEIGHT OR LIGHTWEIGHT CONCRETE - MIN. 3 1/2" THICKNESS OF NORMAL WEIGHT CONCRETE WITH CARBONATE OR SILICEOUS AGGREGATE 45 TO 95 PCF UNIT WEIGHT, MIN. 3000 PSI COMPRESSIVE STRENGTH. MIN. 3 1/2" THICKNESS OF LIGHTWEIGHT CONCRETE WITH EXPANDED SHALE, CLAY OR SLATE AGGREGATE, 105 TO 115 PCF UNIT WEIGHT, MIN. 3000 PSI COMPRESSIVE STRENGTH.

B. WELDED WIRE FABRIC - 6 x 6 - W14 x W14.

C. STEEL FLOOR AND FORM UNITS - COMPOSITE OR NONCOMPOSITE 2" DEEP FLUTED GALVANIZED UNITS AS SPECIFIED IN THE INDIVIDUAL FLOOR-CEILING DESIGN. MAX. DIAMETER OF OPENING CORE-DRILLED THROUGH FLOOR ASSEMBLY IS 10 1/2".

2. THROUGH PENETRANTS - ONE METALLIC PIPE, CONDUIT OR TUBING TO BE INSTALLED EITHER CONCENTRIC ALLY OR ECCENTRIC ALLY WITHIN WITHIN THE FIRESTOP SYSTEM. PIPE, CONDUIT OR TUBING TO BE RIGIDLY SUPPORTED ON BOTH SIDES OF FLOOR ASSEMBLY. THE FOLLOWING TYPES AND SIZES OF METALLIC PIPES, CONDUITS OR TUBING MAY BE USED.

A. STEEL PIPE - NOMINAL 8" DIAMETER (OR SMALLER) SCHEDULE 40 (OR HEAVIER) STEEL PIPE. THE ANNULAR SPACE SHALL BE MINIMUM 1/4" TO MAXIMUM 1 3/8".

B. IRON PIPE - NOMINAL 8" DIAMETER (OR SMALLER) CAST OR DUCTILE IRON PIPE. THE ANNULAR SPACE SHALL BE MINIMUM 1/4" TO MAXIMUM 1 3/8".

C. CONDUIT - NOMINAL 4" DIAMETER (OR SMALLER) STEEL ELECTRICAL METALLIC TUBING OR STEEL CONDUIT. THE ANNULAR SPACE SHALL BE MINIMUM 1/4" TO MAXIMUM 1 3/8".

D. COPPER TUBING - NOMINAL 4" DIAMETER (OR SMALLER) TYPE L (OR HEAVIER) COPPER TUBING. THE ANNULAR SPACE SHALL BE MINIMUM 1/4" TO MAXIMUM 1 3/8".

E. COPPER PIPE - NOMINAL 4" DIAMETER (OR SMALLER) REGULAR (OR HEAVIER) COPPER PIPE. THE ANNULAR SPACE SHALL BE MINIMUM 1/4" TO MAXIMUM 1 3/8".

3. FIRESTOP SYSTEM - THE FIRESTOP SYSTEM SHALL CONSIST OF THE FOLLOWING:

A. PACKING MATERIAL - MINIMUM 4" THICKNESS OF MINIMUM 40 PCF MINERAL WOOL BAT INSULATION FIRMLY PACKED INTO OPENING AS A PERMANENT FORM. PACKING MATERIAL TO BE RECESSED FROM TOP SURFACE OF FLOOR AS REQUIRED TO ACCOMMODATE THE REQUIRED THICKNESS OF FILL MATERIAL.

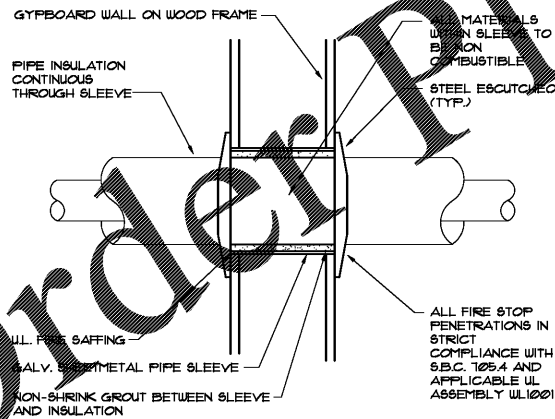
B. FILL, VOID OR CAVITY MATERIAL - CAULK - MINIMUM 1/2" THICKNESS OF FILL MATERIAL APPLIED WITHIN THE ANNULUS, FLUSH WITH TOP SURFACE OF FLOOR.

UNITED STATES GYPSUM CO. - TYPE A

*Bearing the UL Classification Marking

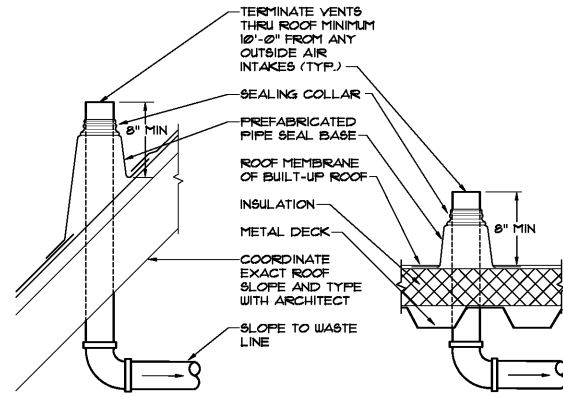
**FIRE PENETRATION
 DETAIL - FLOOR**

7
 P7A SCALE: NONE



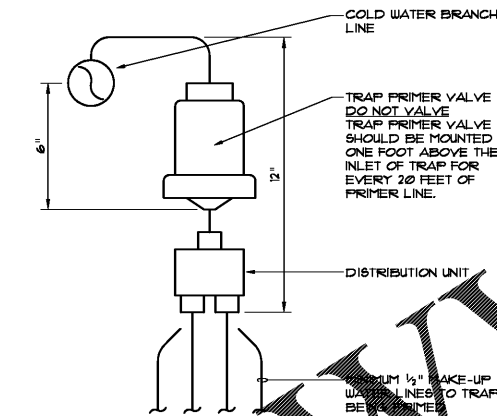
**THROUGH-PENETRATION
 FIRESTOP SYSTEM**

1
 P7A SCALE: NOT TO SCALE



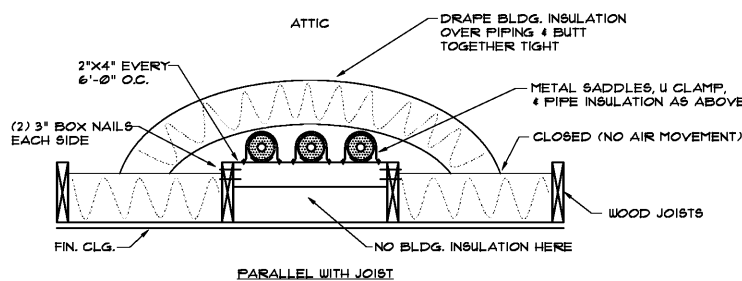
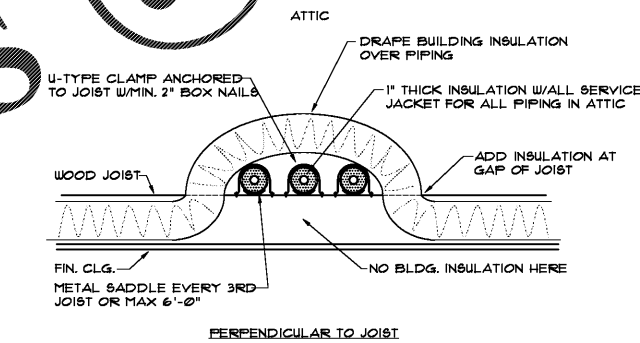
9 VENT THRU ROOF

PTA SCALE: NOT TO SCALE



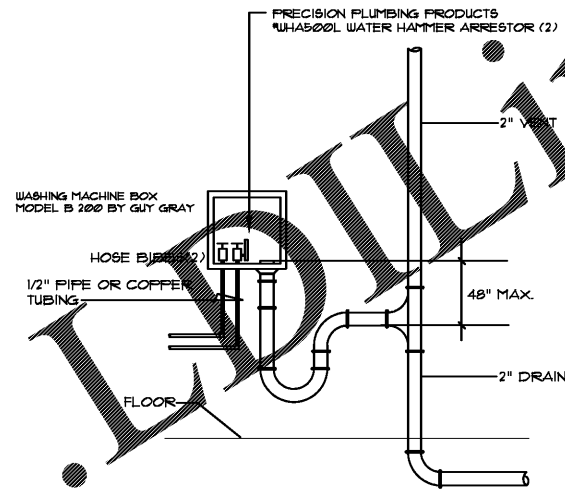
8 TRAP PRIMER

PTA SCALE: NONE



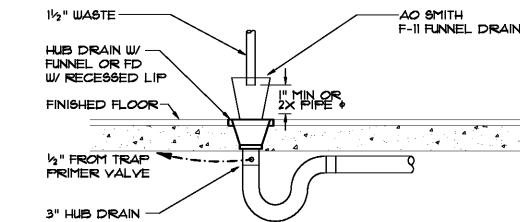
2 DETAIL - WATER PIPING IN ATTIC

PTA SCALE: NOT TO SCALE



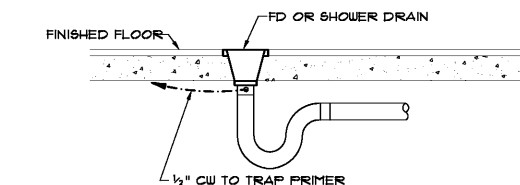
6 WASHING MACHINE BOX DETAIL

PTA SCALE: NONE



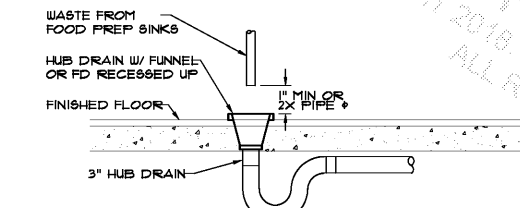
5 DETAIL - HUB DRAIN

PTA SCALE: NONE



4 DETAIL - TRAP PRIMER

PTA SCALE: NONE



3 DETAIL - INDIRECT WASTE

PAA SCALE: NONE

OUTSIDE In Architecture LLC

Architecture | Interior Design | Planning | LEED Consulting
 1346 North Lee Circle | Jacksonville, FL 32202 | 913.403.2599
 State of Florida Accreditation #A-00001777 | 06/20/2014
 www.outsideinarch.com

PRELIMINARY
 NOT FOR
 CONSTRUCTION

DARREN M. AZDELL, AIA, NCARB
 FL LIC# AR 94142

These documents may not accurately reflect the final as-built conditions. It is the responsibility of the contractor to verify all layouts, dimensions and other related information. Errors may occur in the transcription of electronic files. OUTSIDE In Architecture LLC, or the Architect is not responsible for any claims, damages or expenses arising out of the unrestricted use of the information contained in these documents. Drawing is NOT FOR CONSTRUCTION. If professional related seal is not affixed, these documents and design remain the sole property of the architect and shall not be separated from the files. No duplication or copying in whole or part without the written consent of the architect. Copyright © 2018, OUTSIDE In Architecture LLC. All rights reserved.

03.26.18 DD SET
 04.12.18 PRICING SET
 09.01.18 85% CONSTRUCTION SET

MEMORY CARE COTTAGES OF NAPLES
 BUILDING "A"
 WHITAKER ROAD - COLLIER COUNTY, FLORIDA

PLUMBING DETAILS

85% CONSTRUCTION SET 9/1/2018
MAY-BLANKENBEKER, INC.
 1417 Sadler Rd. Suite 160
 FERNANDINA BEACH, FL 32034
 Telephone: 678.373.3257
 Job #1804
 All production & intellectual property reserved © 2018 MBI

017.031 04.12.18

P7A