

POWER PLAN KEY NOTES

- REFER TO FOOD SERVICE DRAWING K1 FOR TAG LOCATIONS NOT SHOWN THIS SHEET.
- REFER TO HVAC DRG. M1 FOR EXACT LOCATIONS FOR MECHANICAL HVAC EQUIPMENT.
- 3P30A NEMA 3R FUSED DISC. ON WALK-IN COND. UNIT LOCATED ON ROOF FUSE PER EQUIPMENT NAMEPLATE. LIQUID TIGHT FLEX CONNECTION.
- MAKE FINAL POWER CONNECTION TO WALK-IN COOLER EVAPORATOR. PROVIDE MOTOR SWITCH IN CAST BOX.
- MAKE FINAL POWER CONNECTION TO WALK-IN FREEZER-FREEZER DEFROSTER, HEAT TAPE & DOOR HEATER.
- PROVIDE LOCAL 3P30A NEMA 3R NON-FUSED DISC SW. ON RTU'S LOCATED ON ROOF EQUIP. NAMEPLATE. PROVIDE LIQUID TIGHT FLEX CONN. TO UNIT.
- PROVIDE GFCI PROTECTED 5-20R DUPLEX RECEPT. INSTALLED IN WP BOX W/ WP COVER AT RTU. (TYP.)
- PROVIDE 120V GFI PROTECTED MOUNTED DETECTORS AND REMOTE TEST INDICATORS. FOR EXACT LOCATIONS OF DUCT DETECTORS, REMOTE INDICATORS & TEST SW'S. (SEE HVAC PLANS).
- INSTALL ALL WALL AND WIRE RELAY CONTROL PANEL PACKAGE FOR HOOD EXHAUST FAN #1, EF-2 AND SUPPLY FAN SF-1. PROVIDE POWER AND INTERLOCK CIRCUITS FOR HP-F CONTROL PANEL AND HOOD FIRE SUPPRESSION SYSTEM. PROVIDE HOOD FAN CONTROL, INTERLOCK WIRING DIAGRAM SHEET M2. MOUNT STARTERS AND CONTROLS ON WALL.
- ON/OFF SWITCH FOR SWITCH AND PILOT LIGHT IN NEMA 4X STAINLESS STEEL ENCLOSURE MOUNTED ON THE FACE OF THE HOOD. PROVIDED BY HOOD MANUFACTURER.
- PROVIDE 2P30A NEMA 3R FUSED DISC SWITCH & L.T. FLEX CONNECTION TO ROOF MTD ICE MAKER COND UNIT, FUSE SIZE PER MFG'S NAMEPLATE DATA.
- PROVIDE WALL OUTLET 108" AFF W/ ISOLATED GROUND RECEPTABLES & LOCATION.
- PROVIDE 3/4" x 1 1/2" x 2 1/4" W. PLYWOOD TELEPHONE BOARD PAINTED WITH 2 COATS OF "LISTED" FIRE RETARDANT LIGHT GRAY COLOR PAINT. AT 98" AFF. PROVIDE QUAD RECEPTABLE ADJACENT TO BOARD. PROVIDE # 8 CU. GROUND TO SERVICE ENTRANCE GROUND, SEE DETAIL ARCHITECTURAL ELEVATIONS.
- PROVIDE CEILING DROPS FOR PRODUCTION COUNTER BRANCH CIRCUITS TO CEILING MOUNTED J-BOXES TO SERVE ALL ELECTRICAL IN CTR.
- PRODUCTION COUNTER ELECTRICAL POWER CIRCUITS. REFER TO PANEL SCHEDULE "C" FOR CIRCUIT NOS. REFER TO EQUIPMENT SUPPLIER SHOP DRAWINGS FOR EXACT LOCATIONS AND TYPE OF CONNECTIONS FOR EQUIPMENT AND HEAT LIGHTS IN/ON PRODUCTION COUNTER.
- BRANCH CIRCUIT(S) CONTINUED TO ADDITIONAL OUTLETS, HOMERUN SHOWN FOR CLARITY ONLY.
- CONNECTION FOR SECURITY CAMERA. VERIFY EXACT LOCATIONS AND TYPE CONNECTIONS FOR INDOOR AND OUTDOOR CAMERAS WITH G.C.
- ROUTE ALL CONDUIT ROOF PENETRATIONS THRU (WITH-IN) ROOF CURBS FOR THE EQUIPMENT. REFER TO MECH. PLANS FOR CURB DETAILS. (TYPICAL)
- PROVIDE 1" CONDUIT TO 6" ABOVE CEILING FOR DATA CABLE.
- HOOD ANSUL FIRE SUPPRESSION SYSTEM.
- MAKE FINAL CONNECTION TO EQUIPMENT.
- COORDINATE EXTERIOR CAMERA LOCATIONS WITH INSTALLED AWNING TO AVOID OBSTRUCTED VIEWS.
- LOAD CENTER FURNISHED BY DUAL LINE EQUIPMENT MANUFACTURER. PROVIDE CIRCUIT CONNECTIONS FROM LOAD CENTER TO LINE EQUIPMENT PER KITCHEN EQUIPMENT SCHEDULE.

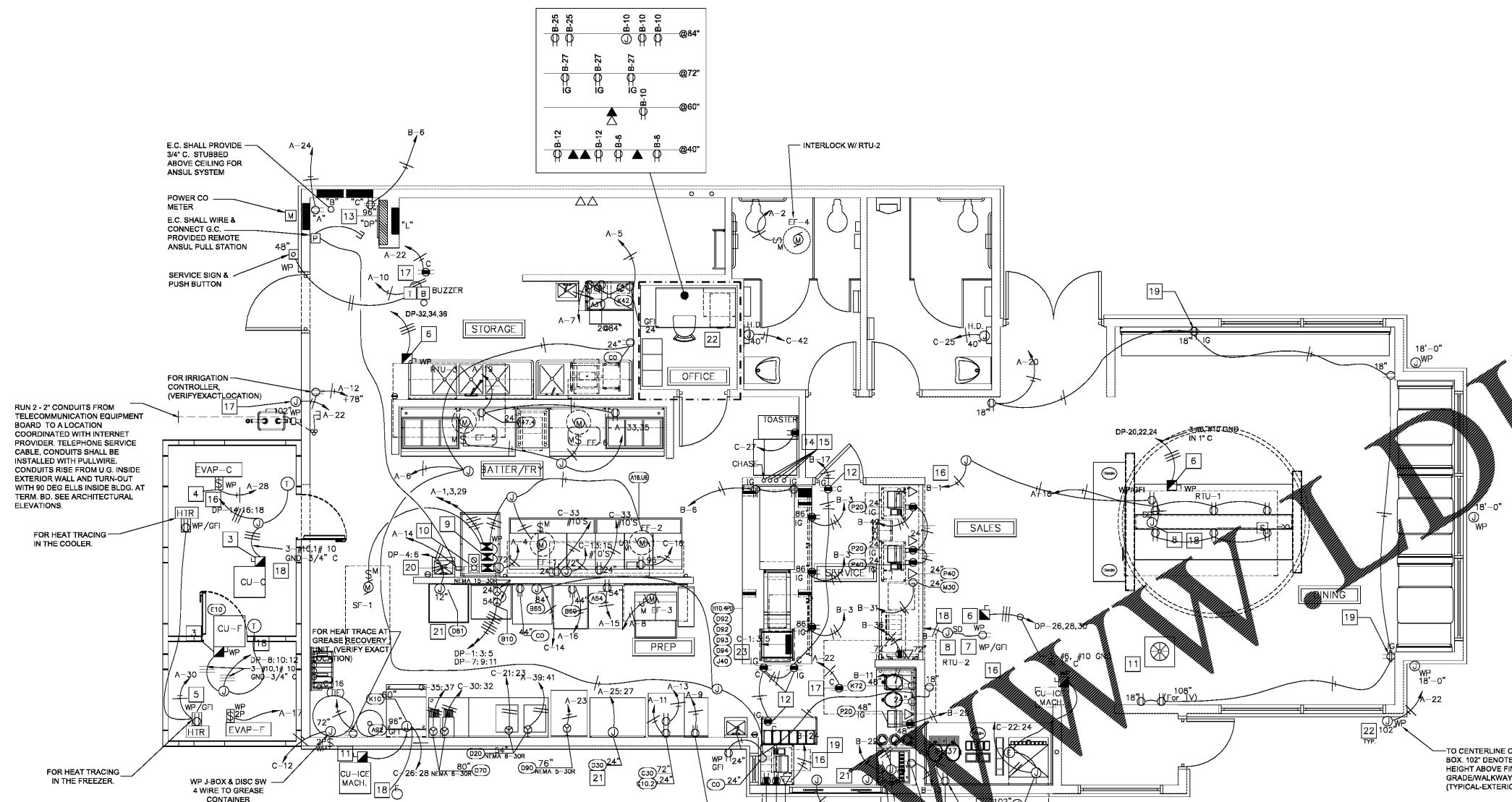
NOTE:  
REFER TO ARCHITECTURAL ELEVATIONS FOR EXACT DIMENSIONED LOCATIONS FOR ALL WALL OUTLETS

P.O.S. NOTES:

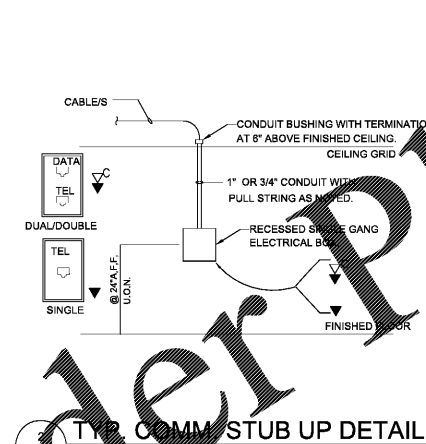
- ALL P.O.S. (POINT OF SALE) CIRCUITS SHALL HAVE AN ISOLATED GROUND WIRE BACK TO THE PANEL. ALL P.O.S. EQUIP. SHALL BE WIRED INDEPENDENTLY OF ANY NON-P.O.S. EQUIPMENT.
- ALL RECEPTABLES FOR P.O.S. EQUIPMENT SHALL BE ISOLATED GROUND WITH SURGE SUPPRESSOR TYPE. ALL RECEPTABLES FOR P.O.S. EQUIPMENT SHALL BE SINGLE UNIT, UNLESS A DUPLEX RECEPTABLE CAN BE USED TO SUPPLY TWO P.O.S. UNITS. DUPLEX RECEPTABLES MAY BE USED IN THE MANAGERS' OFFICE FOR NON-P.O.S. EQUIPMENT (COMPUTER, MUSIC, FIRE ALARM, SECURITY, ETC.).
- ALL CIRCUITS FOR P.O.S. EQUIPMENT SHALL BE CONNECTED TO THE SAME PHASE OF POWER IN THE PANEL. ALL BRANCH CIRCUIT BREAKERS SUPPLYING P.O.S. EQUIPMENT SHALL HAVE LOCKING HANDLES DEVICES.
- EACH RECEPTABLE TYPE (LOCKING OR STRAIGHT BLADE) SHALL MATCH THAT OF THE EQUIPMENT FURNISHED. WHERE P.O.S. EQUIPMENT IS FURNISHED WITHOUT A PLUG THE RECEPTABLE SHALL BE LOCKING TYPE. COORDINATE RECEPTABLE TYPES WITH THE P.O.S. EQUIPMENT SUPPLIER.

GENERAL NOTES:

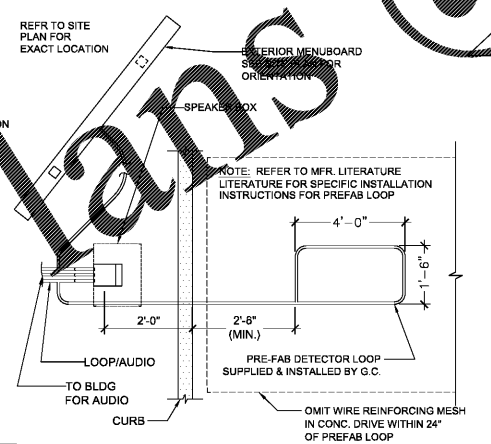
- VERIFY MOUNTING HEIGHTS OF ALL RECEPTABLES WITH EQUIPMENT SUPPLIED PRIOR TO INSTALLATION.
- ALL EQUIPMENT ELECTRICAL OUTLETS ARE DIMENSIONED TO CENTERLINE OF BOX FROM ABOVE FINISHED FLOOR.
- ELECTRICAL CONTRACTOR TO PROVIDE CORD & PLUG CONNECTIONS FOR EQUIPMENT AS REQUIRED.
- ISOLATED GROUND REQUIRED FOR ALL IT EQUIPMENT



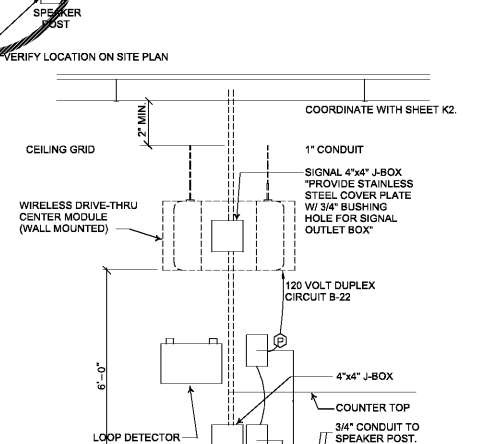
1 ELECTRICAL POWER PLAN AND DETAILS  
1/4"=1'-0"



2 TYP. COMM STUB UP DETAIL  
1/4"=1'-0"



3 DRIVE THRU DETECTOR LOOP  
1/4"=1'-0"



4 DRIVE THRU AUDIO TIMERS  
1/4"=1'-0"

Order Plans

