

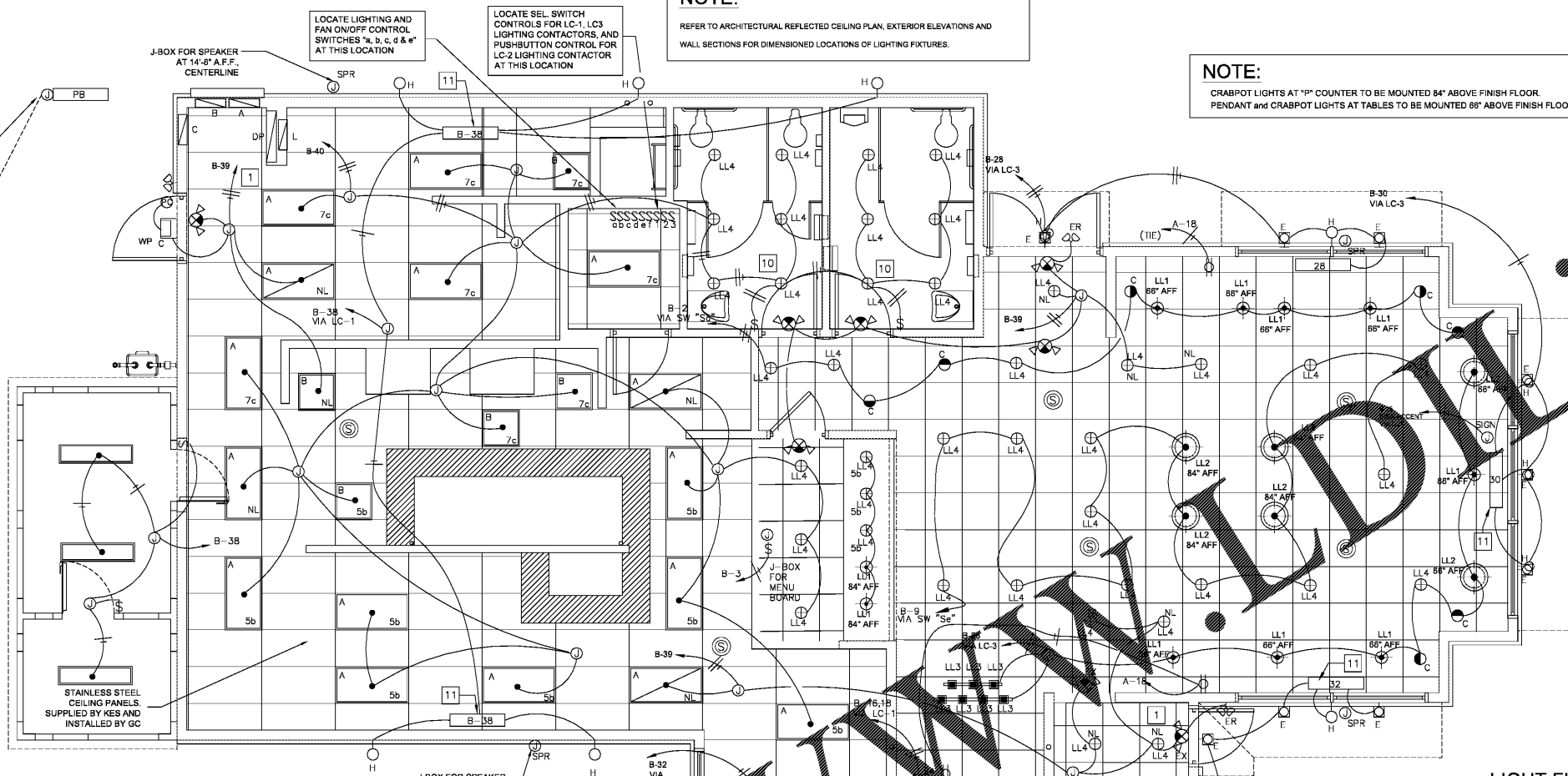


SHEET NOTES:

- ALL "EX" EMERGENCY & EXIT LIGHTING FIXTURES SHALL BE CONNECTED AHEAD OF ROOM/AREA SWITCHES PER NATIONAL ELECTRICAL CODE (NEC) ARTICLE 700-12(f).
- VERIFY THE EXACT LOCATION OF SIGNS, AND FASCIA BOXES BEFORE INSTALLATION OF JUNCTION BOXES.
- HOMERUNS MAY BE COMBINED AS ALLOWED BY THE NATIONAL ELECT. CODE ALL CONDUIT SHALL BE SIZED PER THE 2002 NEC.
- ELECTRICAL CONTRACTOR SHALL VERIFY EXACT SIGN(S) WORKING REQUIREMENTS WITH THE SIGN SUPPLIER PRIOR TO SUBMITTING A BID FOR THE ELECTRICAL.
- ELECTRICAL CONTRACTOR SHALL VERIFY THE POSITION OF THE PYLON SIGN ON THE SITE PLAN.
- PROVIDE 2P/30A NEMA 3R, FUSED DISCONNECT SWITCH WITH LIQUID-TIGHT FLEXIBLE CONNECTION TO SIGN. FUSE SIZE PER SIGN MFR'S RECOMMENDATION.
- THE BUILDING SIGNAGE, DRIVE-THRU MENUBOARD(S), AND SITE LIGHTING SHALL BE WIRED THRU THE LIGHTING CONTACTORS FOR AUTOMATIC MANUAL CONTROL.
- PROVIDE BRACKET(S), WIRING AND LAMPS (F32T8) FOR ALL LIGHT FIXTURES. TURN ON FREEZER/COOLER STORAGE UNIT. ELECTRICAL CONTRACTOR COORDINATE THE INSTALLATION OF SWITCHES AND LAMPS WITH THE EQUIP. SUPPLIER.
- WIRING ON HOOD FOR PRE-WIRED HOOD LIGHTS.
- FIGURE TYPE "LL4" EQUIPPED WITH EMERGENCY LIGHTING BATTERY PACK, THE BATTERY PACK SHALL BE WIRED AHEAD OF ANY SWITCHES.
- 36"x8"x8" SHEET METAL GUTTER FOR BALLAST AND CAPACITORS FOR FIXTURES "H". MOUNT GUTTER ABOVE CEILING TO INTERIOR STUDS.

NOTE:
CRABPOT LIGHTS AT 7" COUNTER TO BE MOUNTED 84" ABOVE FINISH FLOOR.
PENDANT and CRABPOT LIGHTS AT TABLES TO BE MOUNTED 88" ABOVE FINISH FLOOR.

NOTE:
REFER TO ARCHITECTURAL REFLECTED CEILING PLAN, EXTERIOR ELEVATIONS AND WALL SECTIONS FOR DIMENSIONED LOCATIONS OF LIGHTING FIXTURES.

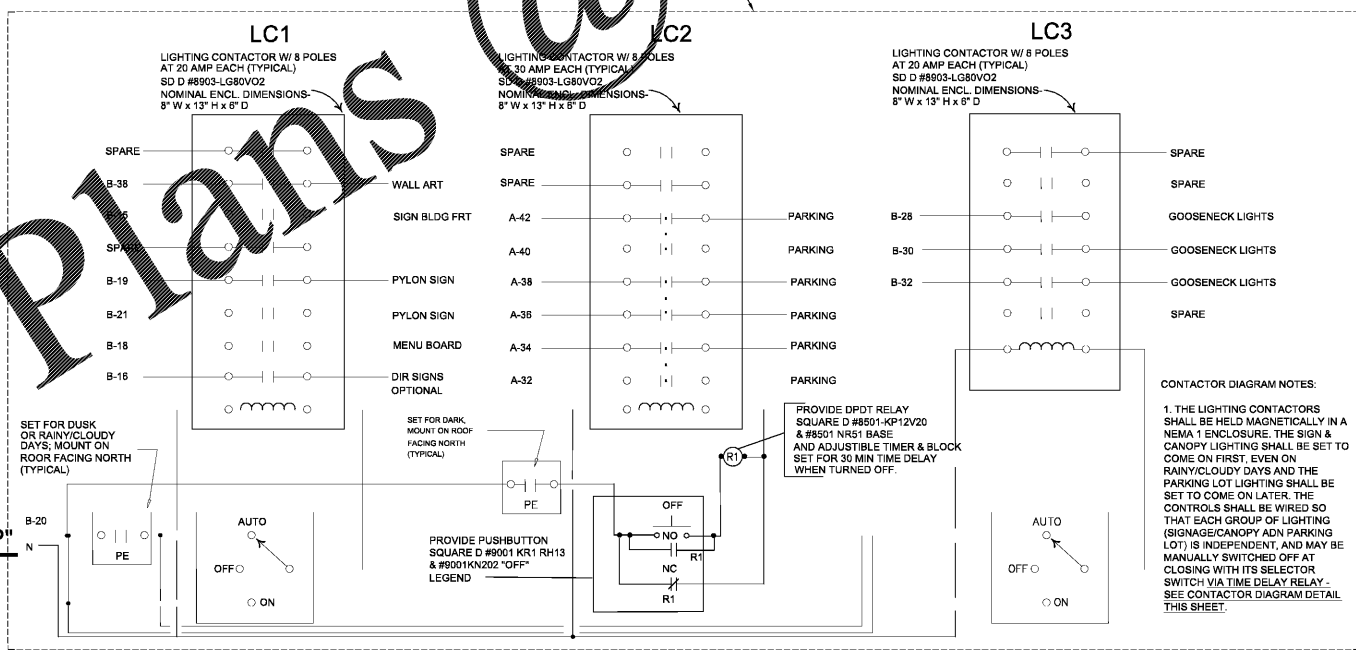


1 LIGHTING REFLECTED CEILING PLAN
1/4"=1'-0"

POPEYES RADIO SYSTEM

DESCRIPTION	MAKE	MODEL	QUANTITY
RECESSED SPEAKERS* (DINING)	BOSE	MODEL #16, BLACK	4
RECESSED SPEAKERS* (KIT CHEN)	MUZAK	M88 8-3TS, BLACK	2
OUTDOOR BOX SPEAKERS*	OWI	701	4
AMPLIFIER	PASO	MU 3130 BGM	1
SPEAKER SUPPORT	QUAM	SSB-2	2
SPEAKER BACKCAN	QUAM	ERD-4	2
CABLE CONNECTIONS, HARDWARE AND SHELF	VARIOUS	VARIOUS	1
AREA VOLUME CONTROL	QUAM	GC-10	3
RECEIVER	ECHO STAR	3000	1
DISH	CHANNEL MASTER	1.0 ANTENNA	1

* NUMBER OF SPEAKERS MAY VARY DUE TO DESIGN CONSIDERATIONS
* LABOR INCLUDES INSTALLATION OF 150' OF 12 GAUGE SPEAKER WIRE.
SEE THE NATIONAL ACCOUNT VENDOR LIST FOR EQUIPMENT SUPPLIER.



3 LIGHTING CONTACTOR DIAGRAM
1/4"=1'-0"

LIGHT FIXTURE SCHEDULE

QTY.	MARK	DESCRIPTION	MANUFACTURER	LIGHT FIXTURE	COLOR	BULBS
15	A	2 x 4 LED LAY-IN	METALUX	24GR-LD5-84-F1-UNV-L835-CD1-U	WHITE	48 WATTS
4	B	2 x 2 LED LAY-IN	METALUX	22GR-LD5-32-F1-UNV-L835-CD1-U	WHITE	30 WATTS
3	CL	COOLER/PREEZER	BY OTHERS	BY COOLER MANUFACTURER		
2	D	BALCONY RECESSED SOFFIT LIGHT (BY SIGN SUPPLIER/BALCONY)	BY OTHERS	851-DL-100MH-FP-WH-120	WHITE	(1) MH100/U/EMD
3	D1	LED SHUTTER UPLIGHT / PAINT IN FIELD	HERMITAGE	75401287	EVERGREEN	25 WATTS
10	E	MANSARD WALL MOUNT UNIT	HERMITAGE	09700809	CLEAR	(1) 28W
4	EM	EMERGENCY LIGHTING UNIT	EXITRONIX	90902323	WHITE	(2) 5W
3	ER	REMOTE EMERGENCY LIGHTING UNIT	EXITRONIX	90901052	WHITE	(1) 5W
8	EX	LED EXIT EMERGENCY COMBO	EXITRONIX	90902167	WHITE	INCLUDED
12	H	LED GOOSENECKS - OUTDOOR	HERMITAGE	93102102	CUSTOM	38 WATTS
10	LL1	PENDANT / LED LAMP	HERMITAGE	EDJ31111	RED	(1) 9.8 WATTS OMNI-DIRECTIONAL
6	LL2	PENDANT / LED LAMP	HERMITAGE	PF348315721218		(3) 9.8 WATTS OMNI-DIRECTIONAL
7	LL3	PENDANT / LED LAMP	HERMITAGE	FLAVORIETY	BLUE AMBER RED	(7) 9.8 WATTS OMNI-DIRECTIONAL
43	LL4/C	8" RECESSED DOWNLIGHT	HERMITAGE	43908588/52001014	WHITE	11.5 WATTS
1	WP	WALL PACK w/ PHOTO CELL (REAR DOOR)	SECURITY	SWP-100MH-DB-MT	BRONZE	(1) MH100/U/EMD

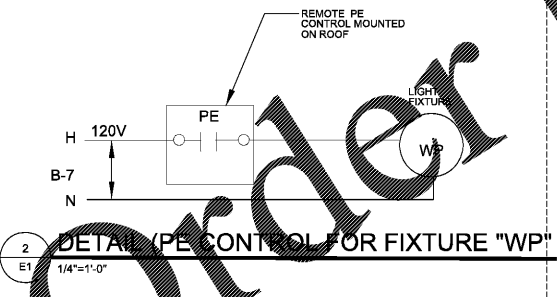
NOTE:

- VERIFY WIND LOAD TO ENSURE POLE SIZE IS SUFFICIENT.
- LABOR WARRANTY FOR TWO YEARS AND AN OVERALL TEN YEAR WARRANTY IS PROVIDED ON ALL PARKING LOT LIGHTING THRU HERMITAGE LIGHTING NATIONAL ACCOUNTS.
- PLEASE CONTACT HERMITAGE LIGHTING FOR INFORMATION ON THE APPROVED LIGHTING PACKAGE, AND PRICING TEL: (800) 284-3383
- NO SUBSTITUTION ALLOWED FOR SPECIFIED LIGHT FIXTURES.
- ONLY APPROVED VENDORS ARE ALLOWED TO BE USED FOR PURCHASING POPEYES LOUISIANA KITCHEN BRAND PRODUCTS.

ALL LIGHT FIXTURES LISTED IN THE ABOVE SCHEDULE SHALL BE FURNISHED AND INSTALLED BY THE ELECTRICAL CONTRACTOR, EXCEPT AS NOTED IN PARAGRAPH, PART 1.1.C OF ELECTRICAL SPECIFICATIONS.

FIXTURE NOTES:

- SEE ARCHITECTURAL DETAILS FOR MOUNTING LOCATIONS.
- ALL OUTLETS FOR LIGHTS SHALL BE SUPPORTED INDEPENDENTLY OF CEILING SYSTEM USING 1/4" ALL THREAD ROD.
- PROVIDE REMOTE MOUNTED (ON ROOF) PE CELL FOR ALL EXTERIOR FIXTURE, TYPE WP NOT ON THE LIGHTING CONTACTOR.
- BALLAST LOCATION FOR GOOSE NECKS INSTALLED PER N.E.C.



2 DETAIL PE CONTROL FOR FIXTURE "WP"
1/4"=1'-0"

