

**HOOD INFORMATION - Job#2941439**

HOOD NO.	TAG	MODEL	LENGTH	MAX. COOKING TEMP.	TOTAL EXH. CFM	EXHAUST PLENUM RISER(S)					HOOD CONSTRUCTION	HOOD CONFIG.		
						WIDTH	LENG.	HEIGHT	DIA.	CFM		S.P.	END TO END	ROW
1		2812 BLL	11' 3.00"	600 Deg.	1901	7"	10"	4"		950	-0.429"	304 SS	ALONE	ALONE
						7"	10"	4"		950	-0.429"	Where Exposed		

**HOOD INFORMATION**

HOOD NO.	TAG	FILTER(S)					LIGHT(S)			UTILITY CABINET(S)			FIRE SYSTEM PIPING	HOOD HANGING WGT	
		TYPE	QTY.	HEIGHT	LENGTH	EFFICIENCY @ 9 MICRONS	QTY.	TYPE	WIRE GUARD	LOCATION	SIZE	FIRE SYSTEM			ELECTRICAL
1		SS Baffle with Handles	8	10"	16"	30%	0			Wall Mnt	12"x36"x24"	Ansul R102	3.0/3.0/3.0		206 LBS

**HOOD OPTIONS**

HOOD NO.	TAG	OPTION
1		BACKSPLASH 112.00" High X 208.00" Long 304 SS Vertical
		OPTIONS ONLY: FIELD WRAPPER 22.50" High x 60.00" Long Left 304 SS
		OPTIONS ONLY: FIELD WRAPPER 22.50" High x 60.00" Long Right 304 SS
		OPTIONS ONLY: FIELD WRAPPER 22.50" High x 60.00" Long Left 304 SS
		OPTIONS ONLY: FIELD WRAPPER 22.50" High x 60.00" Long Right 304 SS
		OPTIONS ONLY: FIELD WRAPPER 37.00" High x 60.00" Long Front 304 SS
		OPTIONS ONLY: FIELD WRAPPER 37.00" High x 60.00" Long Front 304 SS
2		OPTIONS ONLY: WRAPPER CHANNEL - 19.00" Long
		OPTIONS ONLY: WRAPPER CHANNEL - 19.00" Long
		OPTIONS ONLY: WRAPPER CHANNEL - 19.00" Long
		OPTIONS ONLY: WRAPPER CHANNEL - 19.00" Long
		OPTIONS ONLY: WRAPPER CHANNEL - 28.00" Long
		OPTIONS ONLY: WRAPPER CHANNEL - 28.00" Long

All enclosure panels 60" tall with vertical grain

**BLL Series Specification**

The BLL series hood is a low proximity passover type hood. Hood shall have size, shape and performance specified on drawings.

Construction shall be type 430 stainless steel with a #3 or #4 polish where exposed. All seams shall be welded and have stainless steel on exposed surfaces. Unexposed surfaces shall be constructed of aluminized steel. Individual component construction shall be determined by manufacturer and ETL. Construction shall be dependent on the structural application to minimize distortion and other defects. All seams, joints and penetrations of the hood enclosure to its lower outermost perimeter that directs and captures grease-laden vapor and exhaust gases shall have a liquid-tight continuous external weld in accordance with NFPA 96. Hood shall be wall type with provisions to screw to back wall.

Ventilator shall be furnished with UL classified aluminum baffle filters, supplied in size and quantity as required by ventilator. The filters shall extend the full length of the hood and the filler panels shall not be more than 6" in width.

The hood manufacturer shall supply complete computer generated submittal drawings including hood section view(s) and hood plan view(s). These drawings must be available to the engineer, architect and owner for their use in construction, operation and maintenance.

Exhaust duct collar to be 4" high with 1" flange. Duct sizes, CFM and static pressure requirements shall be as shown on drawings. Static pressure requirements shall be precise and accurate; air velocity and volume information shall be accurate within 1-ft increments along the length of the ventilator.

The hood shall have:  
 -A sloped grease drain system which shall be an enclosed integral part of the hood back with an exposed, removable 1/2 pint grease cup to facilitate cleaning.  
 -Low profile design to allow plate shelf and passover design.

The hood shall be ETL Listed as "Exhaust Hood Without Exhaust Damper", ETL Sanitation Listed and built in accordance with NFPA 96. The hood shall be listed for 400' F cooking surfaces at 110 CFM/ft.

**System Design Verification (SDV)**

If ordered, CAS Service will perform a System Design Verification (SDV) once all equipment has had a complete start up per the Operation and Installation Manual. Typically, the SDV will be performed after all inspections are complete.

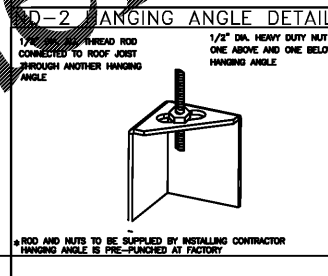
Any field related discrepancies that are discovered during the SDV will be brought to the attention of the general contractor and corresponding trades on site. These issues will be documented and forwarded to the appropriate sales office. If CAS Service has to resolve a discrepancy that is a field issue, the general contractor will be notified and billed for the work. Should a return trip be required due to any field related discrepancy that cannot be resolved during the SDV, there will be additional trip charges.

During the SDV, CAS Service will address any discrepancy that is the fault of the manufacturer. Should a return trip be required, the general contractor and appropriate sales office will be notified. There will be no additional charges for manufacturer discrepancies.

**GENERAL NOTES**

- INSTALLATION**
- ALL ELECTRICAL "FIELD" CONNECTIONS AND RELATED INTERCONNECTIONS BY ELECTRICAL CONTRACTORS.
  - ALL PLUMBING "FIELD" CONNECTIONS AND RELATED INTERCONNECTIONS BY PLUMBING CONTRACTORS.
  - HANGING BRACKETS LOCATED AND WELDED AS SHOWN ON PLANS. ALL OTHER HANGER MATERIALS PROVIDED BY INSTALLING CONTRACTORS.
  - ALL CONNECTIONS FROM CAPTIVE-AIRE DUCT PER MECHANICAL CONTRACTOR'S PLANS.
  - COOKING EQUIPMENT TO SHUT-OFF IN EVENT OF FIRE.
  - EXHAUST FANS TO TURN ON IN EVENT OF FIRE.
  - ALL LIGHTS/FIXTURE SHOWN INSTALLED BY CAPTIVE-AIRE ARE FACTORY PROVIDED. INTERCONNECTIONS BETWEEN HOODS AND TO SWITCHES BY ELECTRICAL CONTRACTORS.
  - LAMPS FOR LIGHT PROVIDED BY INSTALLING CONTRACTORS.
  - SEMI-CRUISE ARE RESPONSIBILITY OF INSTALLING CONTRACTOR.
  - INSTALLING CONTRACTORS ASSUME ALL RELATED RESPONSIBILITY FOR VERIFICATION OF ALL DIMENSIONS AND DATA CONTAINED ON THESE DOCUMENTS FOR ACCURACY, INTERPRETATION, AND COMPLIANCE WITH ALL APPLICABLE CODES AND REGULATIONS PRIOR TO ANY COMMENCEMENT OF FABRICATION.
- BACKSPLASH**
- KITCHEN HOODS MUST BE BALANCED WITH KITCHEN.
  - KITCHEN SHALL BE INSTALLED WITHIN 18" TO DRINKING AREA.
  - RESTAURANT SHALL BE INSTALLED WITH RESPECT TO AMBIENT PRESSURE.
- GENERAL**
- ALL HOOD ENCLOSURES HAVE PRECEDENCE OVER SCALE.
  - SCALE OF THIS DOCUMENT MUST BE USED FOR ALL DIMENSIONS PRIOR TO COMMENCEMENT OF FABRICATION.

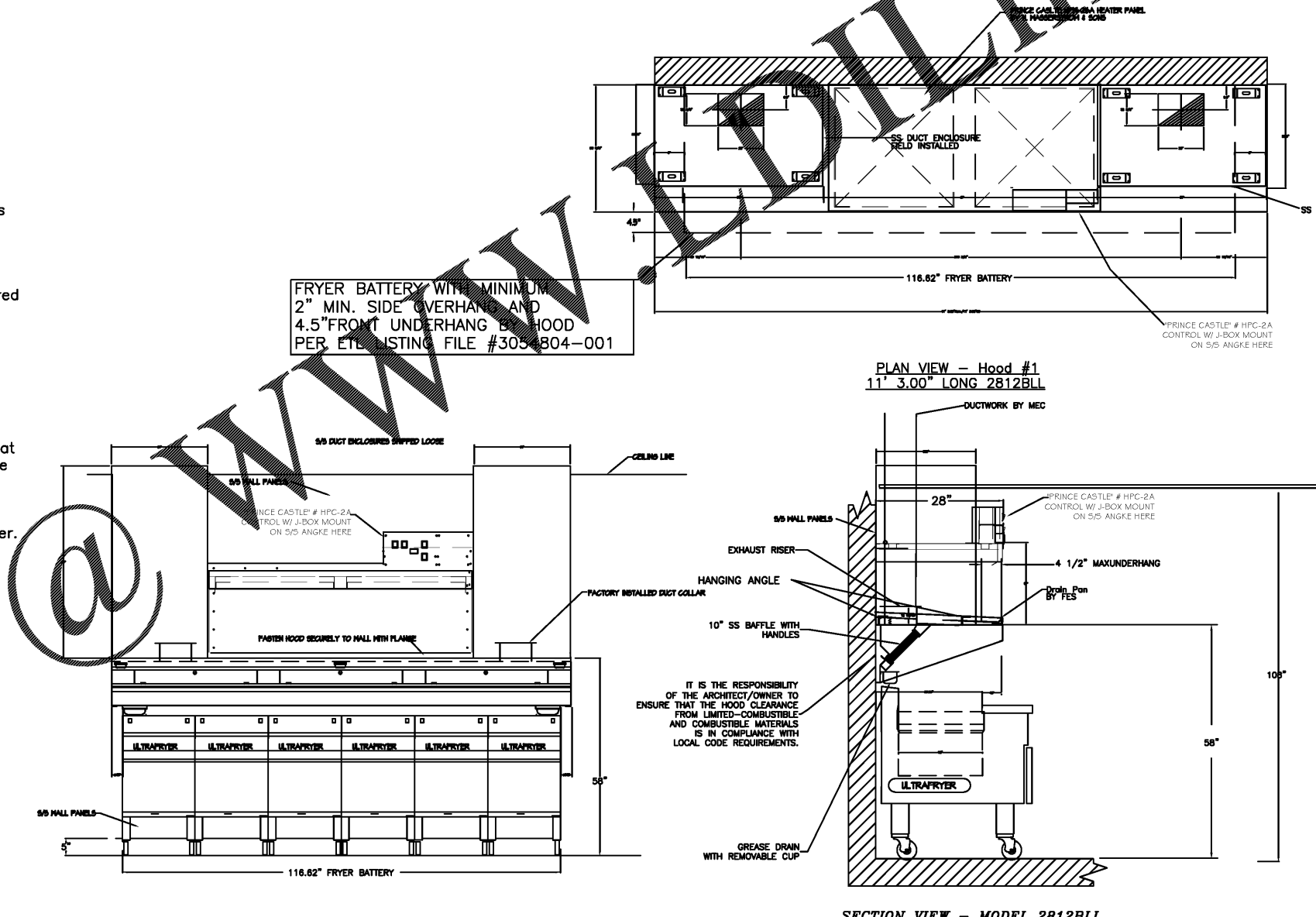
FRYER BATTERY WITH MINIMUM 2" MIN SIDE OVERHANG AND 4.5" FRONT UNDERHANG BY HOOD PER ETL LISTING FILE #3054804-001



HOOD STYLE	DIM FROM REAR	DIM FROM FRONT (24")	DIM FROM FRONT (30")
CANOPY ND2	4.166"	2.246"	2.246"
ND2-PSP-F	4.166"	2.246"	2.246"
BACKSHELF BD-2	4.166"	2.246"	-
VHB/VHB-G	36"x36"	42"x42"	48"x48"
FRONT/BACK DIMS PER SDV	2.246"	2.246"	2.246"

CALCULATIONS UTILIZED	
EXHAUST CFM-LENGTH OF HOOD X CFM/LIN.FT. (LOAD)	
SUPPLY CFM-EXHAUST CFM X PERCENTAGE REQUIRED	
TOTAL DUCT AREA=144 X CFM	
DUCT LENGTH= TOTAL DUCT AREA	
DUCT DEPTH	

CLEARANCE TO COMBUSTIBLES	
CAPTIVE-AIRE HOODS HAVE OPTIONAL CLEARANCE REDUCTION SYSTEMS AVAILABLE AS FOLLOWS:	
MATERIAL	CLEARANCE REDUCTION SYSTEM
NON-COMBUSTIBLE	NONE REQUIRED
LIMITED-COMBUSTIBLE	3" UNINSULATED STANDOFF
COMBUSTIBLE	1" INSULATED STANDOFF



**POPEYES**  
400 PERMITEE CENTER TERRACE  
SUITE 1000  
ATLANTA, GA 30348  
404-69-1460

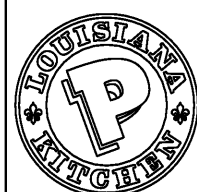
**Shane Hamilton P.E.**  
CONSULTING ENGINEER  
11 Howard Avenue  
Tampa, FL 33607 (813) 251-6848

**London Luckoski Architects, PC**  
architects - planning - interior design  
2126 Morris Avenue  
Birmingham, AL 35203  
Phone (205) 322-1751  
Fax (205) 322-1778  
email info@hplusha.com  
www.hplusha.com

DRAWN BY: DS  
CHECKED BY: MRW. EH  
DATE: 09.27.2018  
HHA PROJECT #18064.14

**PREMIER CAJUN KINGS, LLC - POPEYES**  
Near 431 Main St,  
Shorter, AL 36075

LOUISIANA KITCHEN PLK DESIGN STANDARDS  
PLK1846-DL PROTOTYPE-46 SEATS / DUAL-LINE PRODUCTION



**POPEYES**

SHANE HAMILTON, P.E.  
1717 N. HOWARD AVE. TAMPA, FL  
ALABAMA LICENSE #37020

PERMIT/81D  
SET  
09.27.18

REGISTERED PROFESSIONAL ENGINEER  
STATE OF ALABAMA  
R. HAMILTON

TYPE-1 HOOD DETAILS

**M.3**

DATE:  
CHECKED: