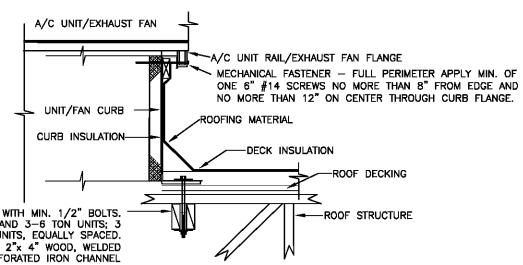
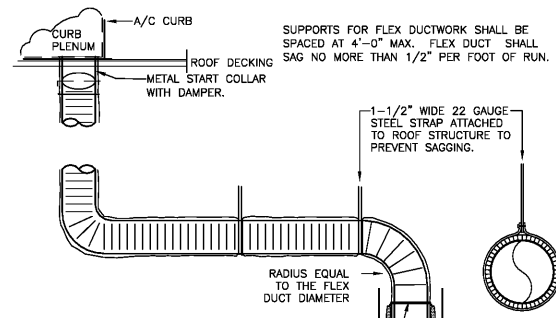


FLOOR PLAN - HVAC
SCALE 1/4" = 1' - 0" WHEN PLOTTED 11" X 24"

FACTORY CURB CONVERSION SHALL NOT BE ACCEPTED.
NCA PLENUMIZED AC CURB DETAIL
NOT TO SCALE



ACCEPTABLE FOR 140 MPH ZONE
ROOF EQUIP. CURB MOUNTING DETAIL
NOT TO SCALE



NOTE: USE "FLEXIBLE DUCT" ONLY, NOT "FLEXIBLE CONNECTOR." IF LOCAL CODE LIMITS LENGTH OF FLEXIBLE DUCT, USE EXTERNALLY INSULATED SNAPLOCK PIPE TO FLEXIBLE DUCT, TO GRILLE/DIFFUSER

DUCT SCHEDULE	
SIZE	GAUGE
6" - 8"	28
10" - 12"	26
14" - 16"	24
18" - 20"	22

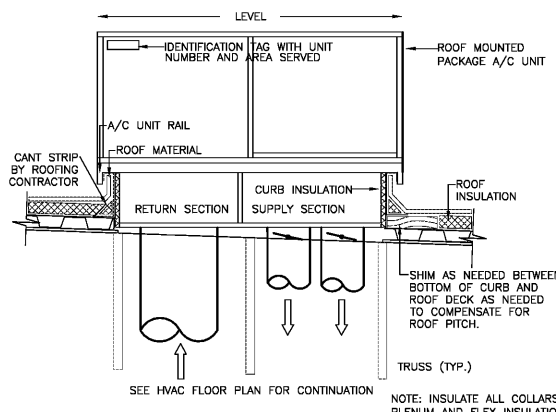
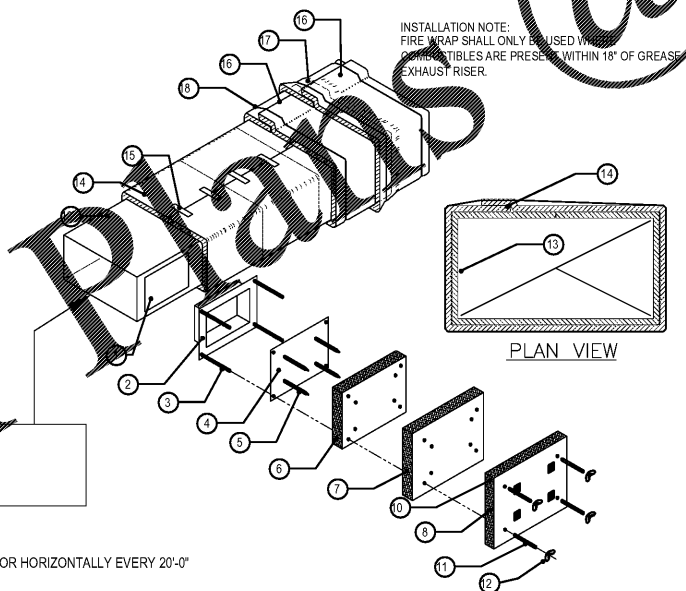
DUCT SUPPORT
SUPPORT DUCTWORK WITH 1-1/2" WIDE 22 GAUGE STEEL STRAPS FIRMLY ATTACHED TO THE BUILDING STRUCTURE. SPACING SHALL BE MAXIMUM 10'-0" FOR RIGID DUCTWORK, AND MINIMUM 4'-0" FOR FLEXIBLE DUCTWORK. 12 GAUGE WIRE MAY BE SUBSTITUTED FOR STRAPS IF 1-1/2" WIDE 22 GAUGE STEEL SADDLES ARE USED TO FULLY ENCLOSE DUCT. REFER TO THE HVAC DUCT CONSTRUCTION STANDARDS PUBLISHED BY SMACNA FOR ADDITIONAL DETAILS. FULLY COMPLY WITH MECHANICAL CODES.

RIGID/FLEXDUCT CONNECTION/INSTALL DETAIL
NOT TO SCALE

- NOTES:**
- BANDING MATERIAL 3/4" WIDE, MINIMUM 0.015" THICK, CARBON STEEL FOR CONSTRUCTION REQUIREMENTS OF ZERO CLEARANCE TO COMBUSTIBLES OR 1 HR. RATINGS. STAINLESS STEEL BANDING IS USED FOR 2 HR. REQUIREMENTS.
 - 3M FIRE BARRIER DUCT WRAP 815+, 1/2" THICK, 24" OR 48" WIDE, 300' STANDARD LENGTH (2 LAYERS); 8 LBS PER CUBIC FT TO BE UTILIZED.
 - HOLD INTERIOR WRAP OF INSULATION USING 1" WIDE FILAMENT TAPE (NO. 898) MANUFACTURED BY 3M COMPANY.
 - SEAL CUT EDGES OF BLANKET WITH ALUMINUM FOIL TAPE.

LEGEND

- DOOR HOLE
- ACCESS FRAME WELDED TO DUCT
- 1/4" DIA. ALL THREAD RODS
- ACCESS COVER, 16 GA.
- INSULATION PINS, WELDED
- 1 3M FIRE BARRIER DUCT WRAP 815 PLUS
- 1 3M FIRE BARRIER 815 PLUS 1" OVERLAP
- 1 3M FIRE BARRIER 815 PLUS 1" OVERLAP
- SPEED CLIPS
- ALUMINUM TAPE EDGES
- SPOOL PIECES FOR THREADED RODS
- 1/4" DIA. WING NUTS
- 16 GA. SHEET METAL DUCT (FULLY WELDED WATER TIGHT)
- 1ST LAYER 3M FIRE BARRIER DUCT WRAP 815 PLUS LONGITUDINAL JOINT BUTT OR MIN. 3" OVERLAP ON INNER LAYER, MIN. 3" OVERLAP ON OUTER LAYER
- 3/4" (19mm) WIDE FILAMENT TAPE
- 2ND LAYER 3M FIRE BARRIER DUCT WRAP 815 PLUS OR APPROVED EQUIVALENT
- 3" MINIMUM PERIMETER OVERLAP - TYP.
- STEEL BANDING 1/2" WIDE MIN. TYP. FOR PERMANENT FASTENING

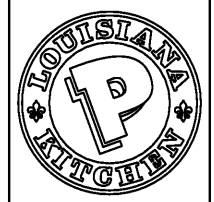


DUCT RISER/LEVELING DETAIL
NOT TO SCALE

Order Plans

1 HR. FIRE WRAP ("0" CLEARANCE) TO COMUSTIBLES - INSTALLATION DETAIL
NOT TO SCALE

PREMIER CAJUN KINGS, LLC - POPEYES
Near 431 Main St,
Shorter, AL 36075
LOUISIANA KITCHEN PLK DESIGN STANDARDS
PLK1 1846-DL PROTOTYPE: 46 SEATS / DUAL-LINE PRODUCTION



POPEYES

SHANE HAMILTON, P.E.
1717 N. HOWARD AVE. TAMPA, FL
ALABAMA LICENSE #37020

PERMIT/BID SET
09.27.18



HVAC ROOF PLAN AND DETAILS

M.2

DATE:
CHECKED: