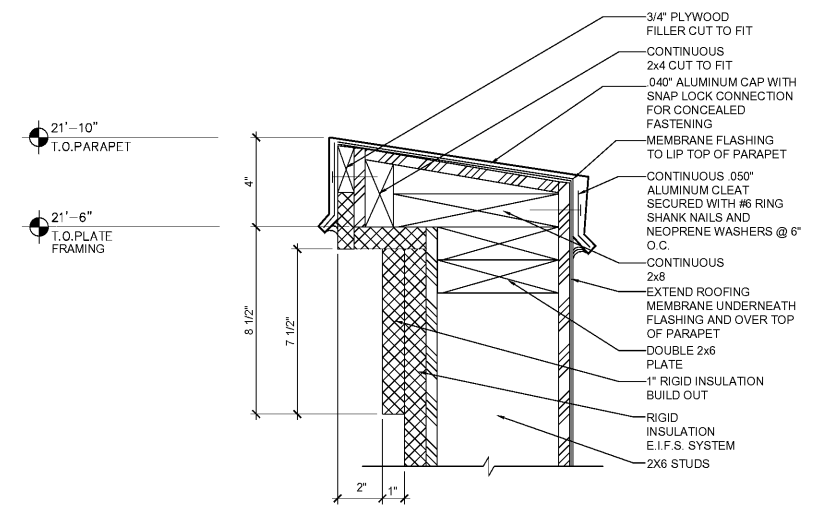
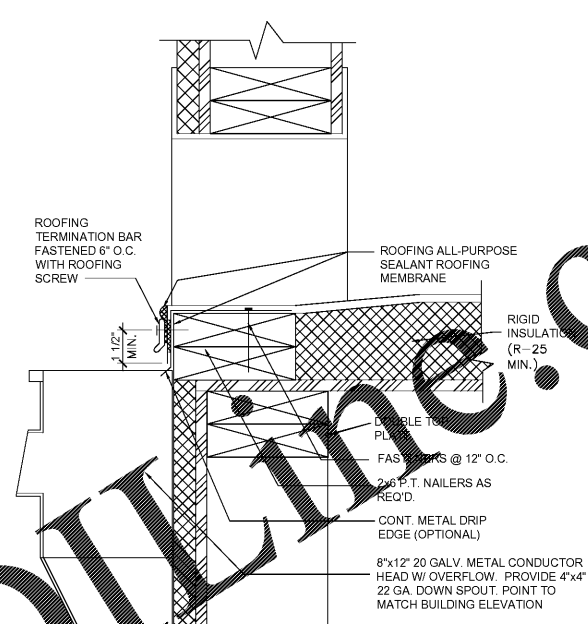


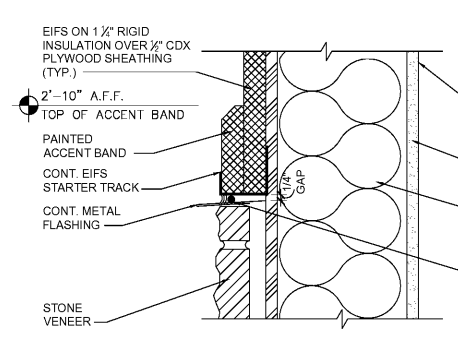
1 SECTION @ PARAPET
A10 3'-1'-0"



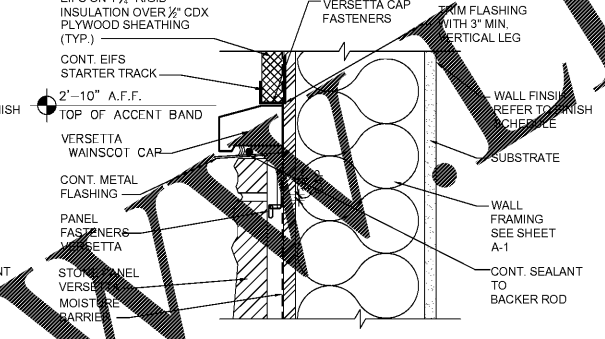
2 SECTION @ PARAPET
A10 3'-1'-0"



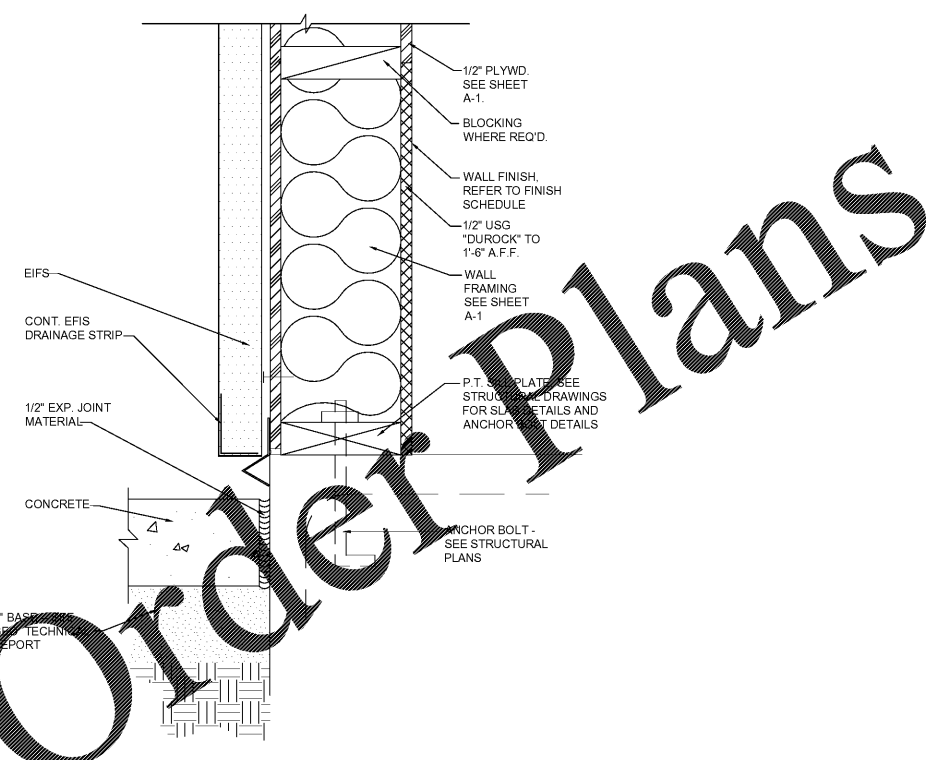
3 SCUPPER W/ OVERFLOW DETAIL
A10 3'-1'-0"



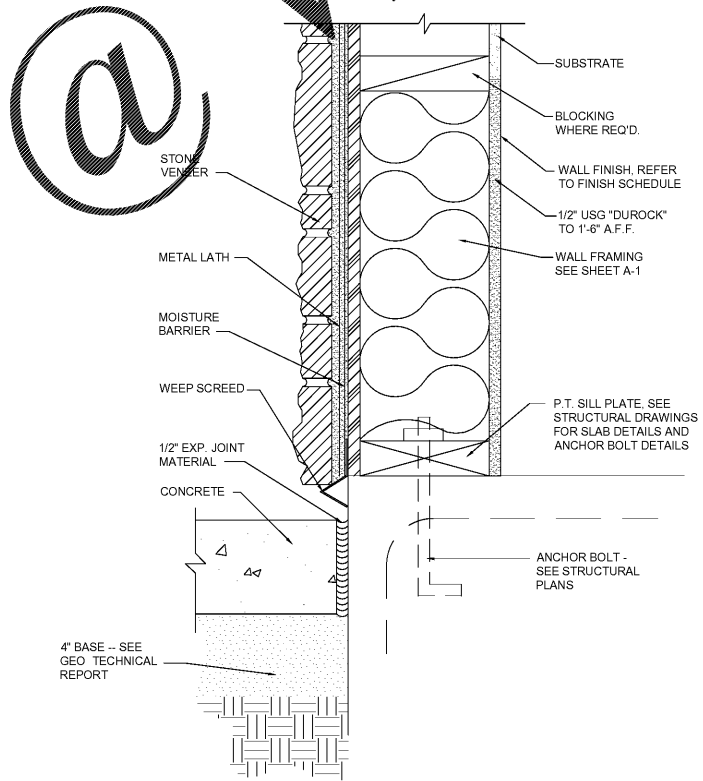
4B DETAIL @ STONE VENEER ALTERNATE
A10 3'-1'-0"



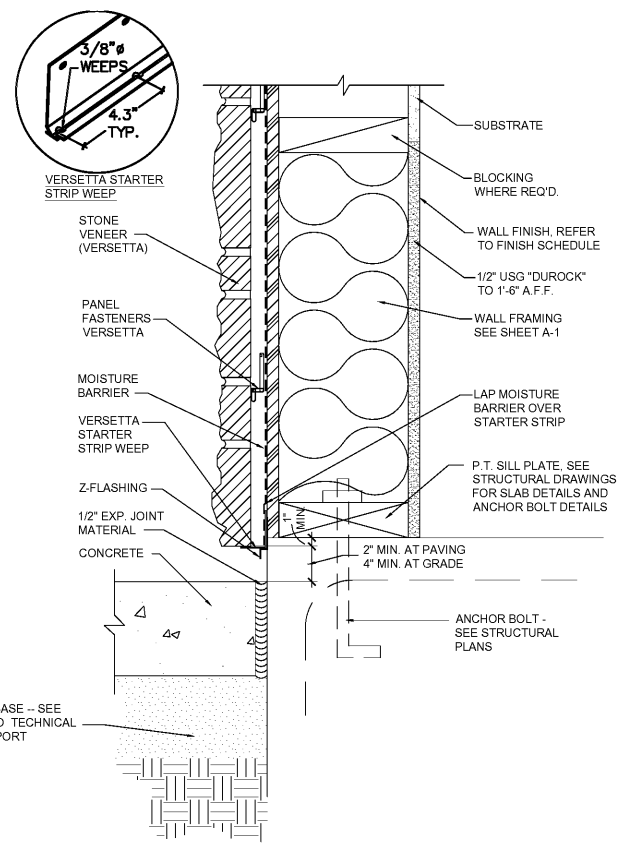
4A DETAIL @ STONE VENEER (VERSETTA) ALTERNATE
A10 3'-1'-0"



5 TYPICAL DETAIL AT BOTTOM OF WALL @ EIFS
A10 3'-1'-0"



6B TYPICAL DETAIL AT BOTTOM OF WALL @ STONE VENEER ALTERNATE
A10 3'-1'-0"

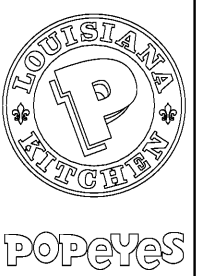


6A TYPICAL DETAIL AT BOTTOM OF WALL @ STONE VENEER (VERSETTA)
A10 3'-1'-0"

POPEYES
400 PERIMETER CENTER TERRACE
SUITE 1000
ATLANTA, GA 30308
404-455-4650

Shendon Huckestein Architects, PC
10.30.18
architecture • planning • interior design
2124 Morris Avenue Birmingham, AL 35203
Phone (205) 322-1751
Fax (205) 322-1778
email info@hplusha.com
www.hplusha.com
DRAWN BY: DS
CHECKED BY: MRW, EH
DATE: 10.30.2018
HHA PROJECT #18064.1.4

PREMIER CAJUN KINGS, LLC - POPEYES
Near 431 Main St,
Shofter, AL 36075
LOUISIANA KITCHEN PLK DESIGN STANDARDS
PLK1 1846-DL PROTOTYPE 46 SEATS / DUAL-LINE PRODUCTION



REVISIONS:
PERMIT/BID SET 10.30.18

A10
EXTERIOR DETAILS
DATE: 10/18/2018
CHECKED: MW