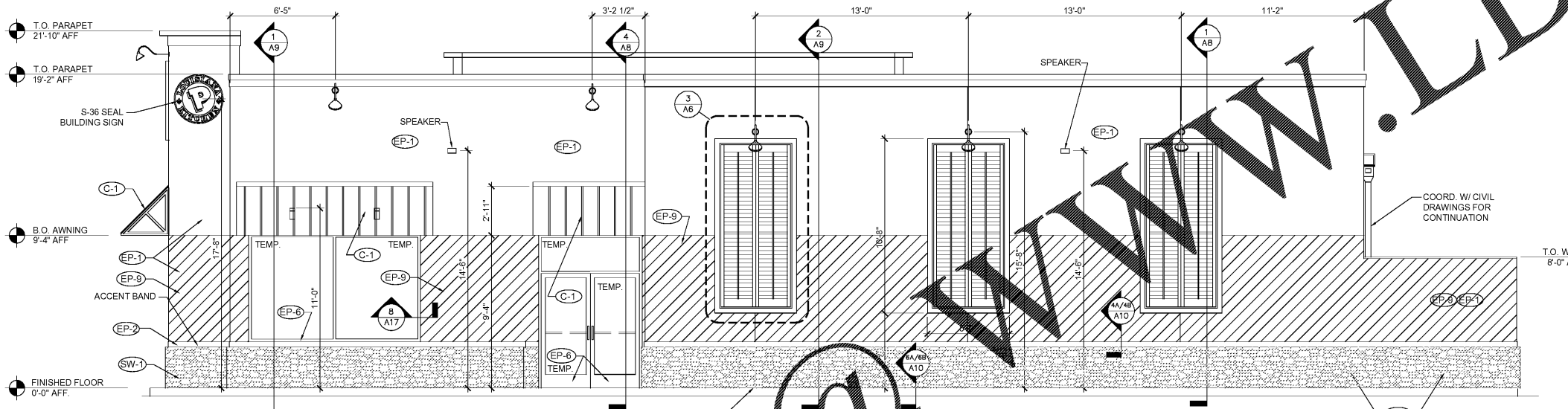


1 DRIVE THRU ELEVATION
A6 1/4"=1'-0"



2 MAIN ENTRY ELEVATION
A6 1/4"=1'-0"

DRIVE-THRU SPECIFICATIONS

DRIVE-THRU WINDOW - QUIKSERV
MODEL #BP-7241E - STANDARD INSTALLATION
MODEL #BP-7241E-IP - HIGH WIND ZONE AS DETERMINED BY THE LOCAL BUILDING CODE

GENERAL NOTES:
ACTUAL DIMENSIONS: 72" (W) x 27" (H)
ROUGH OPENING: 72 3/4" (W) x 41 3/4" (H)

- 1) EYE SET TO BE MOUNTED DIRECTLY BELOW THE SERVICE OPENING. BAR TO BE MOUNTED ON THE WALL.
- 2) ANCHOR SCREWS TO BE SUPPLIED BY THE CONTRACTOR.
- 3) JUNCTION BOX TO BE SUPPLIED BY THE CONTRACTOR.

INSTALLATION:
1) QUIKSERV WINDOWS MUST BE INSTALLED LEVEL AND SQUARE TO WORK PROPERLY.
2) ANCHOR ACCORDING TO THE LOCAL BUILDING CODE ANCHOR SCHEDULE.
3) 115V/15 AMP. DEDICATED CIRCUIT FEATURE.
4) RECOMMENDED HEIGHT FROM FLOOR TO SERVICE OPENING TO BE 68" (CHECK FOR ANY LOCAL CODES OR CITY ORDINANCES).
5) SILICONE ALL EXTERIOR AND INTERIOR JOINTS.
6) ALL OTHER TYPES OF ANCHORING TO BE APPROVED BY CERTIFIED ENGINEER.

SHUTTER MANUFACTURER

SHUTTER CONTRACTOR
MODEL L-2 VINYL, PHONE: 1-800-361-3369
WWW.SHUTTERCONTRACTOR.COM

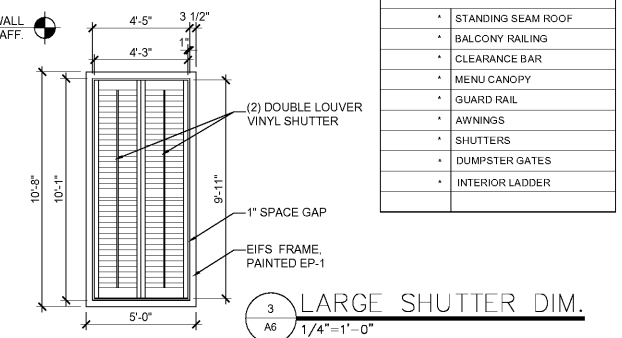
EXTERIOR STONE MANUFACTURER

A. CORONADO STONE PRODUCTS
CONTACT: RICHARD POST
PHONE: (704) 728-2775
CELL: (775) 412-3181
EMAIL: RICHARDP@CORONADO.COM

B. BORAL - VERSETTA STONE PRODUCTS
CONTACT: ASHLEY JOYCE
PHONE: (770) 645-4531
CELL: (404) 197-6766
EMAIL: ASHLEY.JOYCE@BORAL.COM
WARRANTY CONTACT: DENISE PETIT
PHONE: (419) 318-5325
EMAIL: DENISE.PETIT@BORAL.COM

EXTERIOR FINISH NOTES

STO COLORS	
NA10-0016 - DELIGHTFUL GOLDEN	
NA01-0061 - EXOTIC RED	
NA10-0017 - MOCHA BROWN	
DRYVIT COLORS	
POPE051020 - DELIGHTFUL GOLDEN	
POPE021028S - EXOTIC RED	
POPE031020S - MOCHA BROWN	
E.I.F.S. WALL TEXTURE FINISH	
Manuf.	Texture
STO	STO ESSENCE SWIRL
DRYVIT	QUARTZ PUTZ
FINISH NOTES	
THE FOLLOWING COMPONENTS CAN BE PURCHASED FROM THE APPROVED SIGN VENDORS:	
* STANDING SEAM ROOF	
* BALCONY RAILING	
* CLEARANCE BAR	
* MENU CANOPY	
* GUARD RAIL	
* AWNINGS	
* SHUTTERS	
* DUMPSTER GATES	
* INTERIOR LADDER	



3 LARGE SHUTTER DIM.
A6 1/4"=1'-0"

SPECIFICATIONS

SECTION TITLE: ALUMINUM - FRAMED ENTRANCES AND STOREFRONTS YKK AP PRODUCT SERIES - YKK AP YES 45 FS/FI SERIES
PART 1 GENERAL
1. SECTION INCLUDES: ALUMINUM STOREFRONT, INCLUDING:
1.1. YKK AP SERIES YES 45 FI STOREFRONT SYSTEM (INSULATING GLAZING)
1.2. RELATED SECTIONS:
1.1. SINGLE SOURCE REQUIREMENT: ALL PRODUCTS LISTED BELOW SHALL BE BY THE SAME MANUFACTURER.

2. SYSTEM PERFORMANCE DESCRIPTION
2.1. PERFORMANCE REQUIREMENTS: PROVIDE ALUMINUM STOREFRONT SYSTEMS THAT COMPLY WITH PERFORMANCE REQUIREMENTS INDICATED, AS DEMONSTRATED BY TESTING MANUFACTURER'S ASSEMBLIES IN ACCORDANCE WITH TEST METHOD INDICATED.
2.2. AIR INFILTRATION: WHEN TESTED IN ACCORDANCE WITH ASTM E 283 AT DIFFERENTIAL STATIC PRESSURE OF 6.24 PSF (299 PA), COMPLETED STOREFRONT SYSTEMS SHALL HAVE MAXIMUM ALLOWABLE INFILTRATION OF:
2.2.1. 0.06 CFM/FT² (1.10 M³/H · M²) FOR YES 45 FI SYSTEMS.
2.3. WATER INFILTRATION: NO UNCONTROLLED WATER WHEN TESTED IN ACCORDANCE WITH ASTM E 331 AT TEST PRESSURE DIFFERENTIAL OF:
2.3.1. 10 PSF (478 PA) FOR YES 45 FI SYSTEMS. PER THE RECORD, FIELD TESTED IN ACCORDANCE WITH ASTM E 331, TEST STENO HEADS MUST BE SEATED AND SEALED AGAINST SHUTTER FLASHING ON ANY FASTENERS THAT PENETRATE THROUGH THE SILICONE SEALANT.
2.4. WIND LOADS: COMPLY WITH STOREFRONT SYSTEMS SHALL WITHSTAND WIND PRESSURE BELOW NORMAL TO THE PLANE INDICATED.
2.4.1. EXTERIOR WALLS:
2.4.1.1. POSITIVE PRESSURE PER LOCAL CODE.
2.4.1.2. NEGATIVE PRESSURE PER LOCAL CODE.
2.4.1.3. EXTERIOR WALLS (FRAMING): PER LOCAL CODE.
2.5. DEFLECTION: MAXIMUM ALLOWABLE DEFLECTION IN ANY MEMBER WHEN TESTED IN ACCORDANCE WITH ASTM E 330 WITH ALLOWABLE STRESS IN ACCORDANCE WITH AA SPECIFICATIONS FOR ALUMINUM STRUCTURES.

2.5. DEFLECTION: MAXIMUM ALLOWABLE DEFLECTION IN ANY MEMBER WHEN TESTED IN ACCORDANCE WITH ASTM E 330 WITH ALLOWABLE STRESS IN ACCORDANCE WITH AA SPECIFICATIONS FOR ALUMINUM STRUCTURES.
2.6. THERMAL MOVEMENT: PROVIDE FOR THERMAL MOVEMENT INDICATED BY 180 DEGREES F. (82.2 DEGREES C) SURFACE TEMPERATURE, WITHOUT CAUSING BUCKLING STRESS ON JOINT SEAL FAILURES, JOINT SEALS SHALL BE DAMAGING, DAMAGING TO THE EXTENT OF PERMANENT OR DETRIMENTAL EFFECTS.
2.7. THERMAL PERFORMANCE: WHEN TESTED IN ACCORDANCE WITH AAMA 1503 AND NFRC 27.1. CONDENSATION RESISTANCE FACTOR (C) A MINIMUM OF 44 FOR YES 45 FI SYSTEMS.
2.7.2. THERMAL TRANSMITTANCE U-VALUE: 0.1 BTUHR/FT²F OR LESS FOR YES 45 FI SYSTEMS.
NOTE: THERMAL PERFORMANCE FOR THE GLAZED SYSTEM AS A WHOLE SHALL BE AFFECTED BY THE CHARACTERISTICS OF THE GLASS SPECIFIED.

3. PROJECT CONDITIONS / SITE CONDITIONS
3.1. FIELD MEASUREMENTS: VERIFY ACTUAL MEASUREMENTS / OPENINGS BY FIELD MEASUREMENTS BEFORE FABRICATION. RETAIN RECORDED MEASUREMENTS ON SHOP DRAWINGS. COORDINATE FIELD MEASUREMENTS, FABRICATION SCHEDULE WITH CONSTRUCTION PROGRESS TO AVOID CONSTRUCTION DELAYS.

4. WARRANTY
4.1. PROJECT WARRANTY: REFER TO "CONDITIONS OF THE CONTRACT" FOR PROJECT WARRANTY PROVISIONS.
4.2. MANUFACTURER'S WARRANTY: SUBMIT FOR OWNER'S ACCEPTANCE, MANUFACTURER'S STANDARD WARRANTY DOCUMENT EXECUTED BY AN AUTHORIZED COMPANY OFFICIAL.
4.3. WARRANTY PERIOD: MANUFACTURER'S ONE (1) YEAR STANDARD WARRANTY COMMENCING ON THE SUBSTANTIAL DATE OF COMPLETION FOR THE PROJECT PROVIDED THAT THE WARRANTY, IN NO EVENT, SHALL START LATER THAN SIX (6) MONTHS FROM THE DATE OF SHIPMENT BY YKK AP AMERICA INC. EDITOR NOTE: LONGER WARRANTY PERIODS ARE AVAILABLE AT ADDITIONAL COST.

5. PART 2 PRODUCTS
5.1. MANUFACTURERS (ACCEPTABLE MANUFACTURERS/PRODUCTS)
5.2. ACCEPTABLE MANUFACTURERS: YKK AP AMERICA INC.
5.3. STOREFRONT SYSTEM: YKK AP YES 45 FI STOREFRONT SYSTEM.
6. COLORS: AS SPECIFIED BY POPEYES LOUISIANA KITCHEN.

INSTALLATION
1. GENERAL: INSTALL MANUFACTURER'S SYSTEM IN ACCORDANCE WITH SHOP DRAWINGS, AND WITHIN SPECIFIED TOLERANCES
1.1. PROTECT ALUMINUM MEMBERS IN CONTACT WITH MASONRY, STEEL, CONCRETE, OR DISSIMILAR MATERIALS USING NYLON PADS OR BITUMINOUS COATING.
2. SHIM AND BRACE ALUMINUM SYSTEM BEFORE ANCHORING TO STRUCTURE.

QUALITY ASSURANCE
1. QUALIFICATIONS: INSTALLER EXPERIENCED (AS DETERMINED BY CONTRACTOR) TO PERFORM WORK OF THIS SECTION WHO HAS SPECIALIZED IN THE INSTALLATION OF WORK SIMILAR TO THAT REQUIRED FOR THIS PROJECT. IF REQUESTED BY OWNER: SUBMIT REFERENCE LIST OF COMPLETED PROJECTS, PRE-INSTALLATION MEETINGS, CONDUCT PRE-INSTALLATION MEETING TO VERIFY PROJECT REQUIREMENTS, SUBSTRATE CONDITIONS, MANUFACTURER'S INSTALLATION INSTRUCTIONS, AND MANUFACTURER'S WARRANTY REQUIREMENTS.
2. PROJECT CONDITIONS / SITE CONDITIONS
3.1. FIELD MEASUREMENTS: VERIFY ACTUAL MEASUREMENTS / OPENINGS BY FIELD MEASUREMENTS BEFORE FABRICATION. RETAIN RECORDED MEASUREMENTS ON SHOP DRAWINGS. COORDINATE FIELD MEASUREMENTS, FABRICATION SCHEDULE WITH CONSTRUCTION PROGRESS TO AVOID CONSTRUCTION DELAYS.
4. WARRANTY
4.1. PROJECT WARRANTY: REFER TO "CONDITIONS OF THE CONTRACT" FOR PROJECT WARRANTY PROVISIONS.
4.2. MANUFACTURER'S WARRANTY: SUBMIT FOR OWNER'S ACCEPTANCE, MANUFACTURER'S STANDARD WARRANTY DOCUMENT EXECUTED BY AN AUTHORIZED COMPANY OFFICIAL.
4.3. WARRANTY PERIOD: MANUFACTURER'S ONE (1) YEAR STANDARD WARRANTY COMMENCING ON THE SUBSTANTIAL DATE OF COMPLETION FOR THE PROJECT PROVIDED THAT THE WARRANTY, IN NO EVENT, SHALL START LATER THAN SIX (6) MONTHS FROM THE DATE OF SHIPMENT BY YKK AP AMERICA INC. EDITOR NOTE: LONGER WARRANTY PERIODS ARE AVAILABLE AT ADDITIONAL COST.
5. PART 2 PRODUCTS
5.1. MANUFACTURERS (ACCEPTABLE MANUFACTURERS/PRODUCTS)
5.2. ACCEPTABLE MANUFACTURERS: YKK AP AMERICA INC.
5.3. STOREFRONT SYSTEM: YKK AP YES 45 FI STOREFRONT SYSTEM.
6. COLORS: AS SPECIFIED BY POPEYES LOUISIANA KITCHEN.

INSTALLATION
1. GENERAL: INSTALL MANUFACTURER'S SYSTEM IN ACCORDANCE WITH SHOP DRAWINGS, AND WITHIN SPECIFIED TOLERANCES
1.1. PROTECT ALUMINUM MEMBERS IN CONTACT WITH MASONRY, STEEL, CONCRETE, OR DISSIMILAR MATERIALS USING NYLON PADS OR BITUMINOUS COATING.
2. SHIM AND BRACE ALUMINUM SYSTEM BEFORE ANCHORING TO STRUCTURE.

3. SHIM AND BRACE ALUMINUM SYSTEM BEFORE ANCHORING TO STRUCTURE.
4. PROVIDE SILL FLASHING AT EXTERIOR STOREFRONT SYSTEMS. EXTEND EXTRUDED FLASHING CONTINUOUS WITH SPLICE JOINTS; SET IN CONTINUOUS BEADS OF SEALANT.
5. VERIFY STOREFRONT SYSTEM ALLOWS WATER ENTERING SYSTEM TO BE COLLECTED IN GUTTERS AND WEPT TO EXTERIOR. VERIFY METAL JOINTS ARE SEALED IN ACCORDANCE WITH MANUFACTURER'S INSTALLATION INSTRUCTIONS.

SECTION 8D: GLAZING
GENERAL PROVISIONS
1. SCOPE: FURNISH AND INSTALL GLASS IN STOREFRONT AND DRIVE-THRU SERVICE WINDOW.
MATERIALS
1. TYPE: SOLAR CONTROL LOW-E CLEAR INSULATING GLASS
"SOLARBAN 60 (2) CLEAR + CLEAR BY VITRO ARCHITECTURAL GLASS
1.1. OUTDOOR LITE: CLEAR GLASS, SPUTTER COATED ON SECOND SURFACE (2)
1.2. INDOOR LITE: CLEAR (TRANSPARENT) FLOAT GLASS.
1.3. LOW-E COATING: "SOLARBAN" 60 SOLAR CONTROL (SPUTTERED) BY VITRO ARCHITECTURAL GLASS
LOCATION: SECOND SURFACE (2)
2. PERFORMANCE VALUES:
2.1. VISIBLE LIGHT TRANSMITTANCE: 70%
2.2. U-VALUE WINTER: 0.29
2.3. U-VALUE SUMMER: 0.27
2.4. SHGC: 0.39
2.5. SHADING COEFFICIENT: 0.45
2.6. OUTDOOR VISIBLE LIGHT REFLECTANCE: 11%

APPROVED MANUFACTURERS:
VITRO CERTIFIED FABRICATOR REQUIRED
CERTIFICATION: BOTH LITES TO BE CRADLE TO CRADLE CERTIFIED™, MINIMUM BRONZE LEVEL, BY CRADLE TO CRADLE PRODUCT INNOVATION INSTITUTE (WWW.C2CCERTIFIED.ORG).

OUTDOOR APPEARANCE: CLEAR
INSULATING UNIT CONSTRUCTION: 1/4" (6MM) GLASS + 1/2" (13MM) AIR SPACE + 1/4" (6MM) GLASS

POPEYES LOUISIANA KITCHEN
NEW CONSTRUCTION AND REIMAGING

POPEYES LOUISIANA KITCHEN				EXTERIOR FINISH SCHEDULE		
NEW CONSTRUCTION AND REIMAGING				UPDATE: 4/5/2017		
Mark	Location	Supplier / Manuf.	Material	Specification	Color	Finish / Notes
EP-1	MAIN WALL SURFACE ABOVE WAINSCOT ACCENT TRIM		PAINT OR EIFS FORMULA	#2158-30	DELIGHTFUL GOLDEN	UltraSpec Satin
EP-2	CROWN WALL SURFACE ACCENT WAINSCOT ACCENT TRIM	BENJAMIN MOORE	PAINT OR EIFS FORMULA	#2086-10	EXOTIC RED	UltraSpec Satin
EP-3	WAINSCOT BELOW ACCENT TRIM REAR BLDG		EIFS / METAL / PAINT	#2107-20	MOCHA BROWN	UltraSpec Satin
EP-4	SHUTTERS	SHUTTERCONTRACTOR.COM	14 1/2"x60" VINYL SHUTTERS (Balcony) 28 1/2"x18" VINYL SHUTTERS (Building)	L2 - VINYL L7S - VINYL	UNFINISHED	030 - PAINTABLE
EP-5	DRIVE THRU WINDOW CANOPY AND RAILINGS	BENJAMIN MOORE	METAL / POWDER COAT	RAL 6009	RAINFORREST FOLIAGE	170 Semi Gloss
EP-6	STORE FRONT GLAZING	YKK AP	METAL / PAINT	#2040-10	HUNTER GREEN	SMOOTH
EP-6	STORE FRONT GLAZING	YKK AP	ANODIZED ALUMINUM	#YBSN	DARK BRONZE	21-28 DAYS
EP-7	DUMPSTER WALLS / GATES	BENJAMIN MOORE	METAL / PAINT	#2107-20	MOCHA BROWN	UltraSpec Satin
EP-8	BOLLARDS		METAL / ASPHALT / PAINT		SAFETY & ZONE ACRYLIC MARKING	P58-10
EP-9	ANTI-GRAFFITI	BENJAMIN MOORE	PAINT	ALPHATIC ACRYLIC URETHANE	CLEAR GLOSS	M74-00 / M75 (2 COATS)
SW-1	STONE WAINSCOT	BORAL STONE	VERSETTA SIMILATED STONE VENEER	LEOCESTONE	PLUMB CREEK	NON-OVERLAPPING
SG-1	AWNING GRATE (OPT)	QUIKRETE	VENEER STONE MORTAR	POLYMER MODIFIED	MOCHA BROWN	1137-85
G-1	AWNING GUPPLER	SHAWING GUPPLER	METAL / POWDER COAT	RAL 6009	HUNTER GREEN	SMOOTH
C-1	STANDING SEAM CANOPY	COPPER SALES, INC.	UNAK-CLAD	PANTONE 19MS 187C	REGAL RED	12" OC / GAUGE PER LOCAL CODE REQUIREMENTS

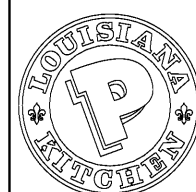


Richard Post
Richard Post Architects, PC

2126 Morris Avenue Birmingham, AL 35203
Phone (205) 322-1751
Fax (205) 322-1778
email info@hplusha.com
www.hplusha.com

DRAWN BY: DS
CHECKED BY: MRW, EH
DATE: 10.30.2018
HHA PROJECT #18064.14

PREMIER CAJUN KINGS, LLC - POPEYES
Near 431 Main St.
Shofter, AL 36075
LOUISIANA KITCHEN PLK DESIGN STANDARDS
PLK1 1846-DL PROTOTYPE 46 SEATS / DUAL-LINE PRODUCTION



POPEYES

REVISIONS:
PERMIT/BD SET 10.30.18

A6
LEFT & RIGHT
EXTERIOR ELEVATIONS

DATE: 10/18/2018
CHECKED: MW