

# SPECIFICATIONS:

## DIVISION 7: THERMAL AND MOISTURE PROTECTION

### SECTION 7C: SHEET METAL WORK

- GENERAL PROVISION**
- SCOPE: FURNISH AND INSTALL GRAVEL STOPS, FLASHING, PARAPET CAP, DOWNSPOUTS, AND GUTTERS.
  - ROOFING MEMBRANE FLASHING IS INCLUDED IN SECTION 7B: MEMBRANE ROOFING.
- MATERIALS**
- MATERIALS SHEET METAL: .032 ALUMINUM.
  - NAIL FASTENERS: 1 3/4" X 11 GAUGE GALVANIZED, STAINLESS STEEL OR ALUMINUM ROOFING NAILS MAY BE USED FOR FASTENERS INTO WOOD WHEN CONCEALED ONLY.
  - WASHERS: NEOPRENE
  - SCREW FASTENERS: CORROSION-RESISTANT, SELF-TAPPING, HEX HEAD SCREW, 1/4" MINIMUM DIAMETER WITH SUFFICIENT LENGTH TO PENETRATE 1" MINIMUM INTO WOOD OR 1/2" MINIMUM INTO STEEL. PROVIDE NEOPRENE SEALING WASHER FOR EXPOSED FASTENING.

- PERFORMANCE**
- INSTALLATION: EXPOSED FLASHINGS SHALL BE PAINTED TO MATCH ADJACENT MATERIALS. VERIFY WITH POPEYES' CONSTRUCTION MANAGER.

### SECTION 7D: STANDING SEAM CANOPY

- PART 1 - GENERAL**
- 1.0 SUBMITTALS
- SUBMIT FOR APPROVAL SAMPLES, SHOP DRAWINGS, PRODUCT DATA.
- QUALITY ASSURANCE
- COMPLY WITH GOVERNING CODES AND REGULATIONS. PROVIDE PRODUCTS OF ACCEPTABLE MANUFACTURERS WHICH HAVE BEEN IN SATISFACTORY USE IN SIMILAR SERVICE FOR THREE YEARS. USE EXPERIENCED INSTALLERS. DELIVER, HANDLE, STORE MATERIALS IN ACCORDANCE WITH MANUFACTURER'S INSTRUCTIONS.
- WARRANTY**
- METAL ROOF SYSTEM MANUFACTURER, UPON FINAL ACCEPTANCE FOR PROJECT, FURNISH A WARRANTY COVERING BARE METAL AGAINST RUPTURE, STRUCTURAL FAILURE AND PERFORATION DUE TO NORMAL ATMOSPHERIC CORROSION EXPOSURE FOR A PERIOD OF 20 YEARS.

### PART 2 - PRODUCTS (UC-A SERIES, AS MANUFACTURED AND SPECIFIED BY UNACLAD, METAL ROOF SYSTEMS.)

- 2.0 MATERIALS
- METAL ROOF SYSTEM PROFILE:
    - UC-A "NO CLIP", 1 1/2" HIG BATTENS X 12" RIB TO RIB (SMALL BATTENS)
    - CONCEALED FASTENER
  - GAUGE:
    - .028 GAUGE - STEEL
  - TEXTURE:
    - SMOOTH
  - FINISH:
    - PREMIUM FLUOROCARBON COATING PRODUCED WITH KYNAR 500 OR HYLAR 5000 RESIN (20 YEAR WARRANTY.)

### PART 3 - EXECUTION

- 3.0 INSTALLATION
- COMPLY WITH SMACNA SHEET METAL MANUAL RECOMMENDATIONS. COMPLY WITH ACCESSORY MANUFACTURER'S INSTRUCTIONS AND RECOMMENDATIONS. COORDINATE INSTALLATION WITH ROOFING SYSTEM TO ENSURE WEATHERTIGHT PERFORMANCE.
  - ANCHOR SECURELY TO STRUCTURE TO WITHSTAND INWARD AND OUTWARD LOADS.
  - ISOLATE DISSIMILAR METALS TO PREVENT GALVANIC CORROSION.

### DIVISION 9: FINISHES

#### SECTION 9G: EIFS

##### PART 1 GENERAL

- 1.01 DESCRIPTION
- DESIGN REQUIREMENTS: THE STRUCTURAL WALL SYSTEM TO WHICH THE EIFS IS ATTACHED SHALL MEET L240 MAXIMUM ALLOWABLE DEFLECTION CRITERIA AND APPLICABLE BUILDING CODE REQUIREMENTS.
- 1.02 SUBMITTALS
- SUBMIT SAMPLES FOR APPROVAL AS DIRECTED BY OWNER.
- 1.03 DELIVERY, STORAGE AND HANDLING
- ALL EIFS MATERIALS SHALL BE DELIVERED IN THEIR ORIGINAL SEALED CONTAINERS BEARING MANUFACTURER'S NAME AND IDENTIFICATION OF PRODUCT WITH WRITTEN APPLICATION INSTRUCTIONS AND APPROPRIATE HEALTH, HAZARD, AND SAFETY DATA.
  - ALL EIFS READY-MIXED MATERIALS SHALL BE PROTECTED FROM EXTREME HEAT, SUN AND FROST. FACTORY PROPORTIONED BAGGED MATERIALS SHALL BE STORED OFF THE GROUND AND PROTECTED FROM MOISTURE.
- 1.04 JOB CONDITIONS
- ALL EIFS MATERIALS SHALL NEVER BE APPLIED IF AMBIENT AND SURFACE TEMPERATURES CANNOT BE KEPT ABOVE 40°F DURING APPLICATION AND DRYING PERIOD FOR INSTALLATION IN TEMPERATURES LESS THAN 40°F SUPPLEMENTARY HEAT SHALL BE PROVIDED. THE INSTALLED EIFS MATERIALS SHALL BE PROTECTED FROM EXPOSURE TO RAIN AND FREEZING UNTIL DRY.
- 1.11 WARRANTY
- PROVIDE MANUFACTURER'S STANDARD LABOR AND MATERIAL WARRANTY.

##### PART 2 PRODUCTS

- 2.01 MANUFACTURERS
- DRYVIT SYSTEMS, INC.
- 2.02 ADHESIVES
- DISPERSION ADHESIVE - NONCEMENTITIOUS, ACRYLIC BASED ADHESIVE.
- 2.03 INSULATION BOARD
- NOMINAL 1.0 lb/cubic feet (16 kg/cubic meter) EXPANDED POLYSTYRENE (EPS) INSULATION BOARD IN COMPLIANCE WITH ASTM C 578 TYPE I REQUIREMENTS, AND EIMA GUIDELINE SPECIFICATION FOR EXPANDED POLYSTYRENE (EPS) INSULATION BOARD.
- 2.04 BASECOAT
- ONE-COMPONENT POLYMER MODIFIED CEMENTITIOUS BASE COAT WITH FIBER REINFORCEMENT AND MORE THAN 10% PORTLAND CEMENT CONTENT BY WEIGHT.
- 2.05 REINFORCING MESHES
- STANDARD MESH: MINIMUM 16 sq. yd. (163 sq. m) PER 1000 sq. ft. (93 sq. m) AREA. SYNTHETIC FIBER REINFORCED POLYMER WEAVE. ALKALINE RESISTANT. COMPATIBILITY WITH DRIVIT MATERIALS.
  - HIGH IMPACT MESH (HIMESH): NOMINAL 11.0 oz/sq. yd. INTERMEDIATE MESH (MEMESH): NOMINAL 11.0 oz/sq. yd. HIGH IMPACT INTERWEAVE, OPEN WEAVE GLASS FIBER FABRIC WITH ALKALINE RESISTANT COATING FOR COMPATIBILITY WITH DRIVIT MATERIALS.

##### PART 3 EXECUTION

- 3.01 PRIMER
- PRIMER: ACRYLIC BASED PRIMER (FOR ACRYLIC BASED FINISHES)
- 3.02 FINISH COAT
- ACRYLIC BASED TEXTURED WALL COATING. SEE E.I.F.S. FORMULAS FOR FINISH COLOR.
- 3.03 JOB MIXED INGREDIENTS
- PORTLAND CEMENT: ASTM C 150, TYPE I
  - WATER: CLEAN AND POTABLE.
- 3.04 EXECUTION
- UNDER NO CIRCUMSTANCES SHALL ANY OF THE PRODUCTS BE ALTERED BY ADDING ANY ADDITIVES, EXCEPT FOR SMALL AMOUNTS OF CLEAN WATER AS DIRECTED ON LABEL. ANTIFREEZE, ACCELERATORS, RAPID BINDERS, ETC., ARE FORBIDDEN.
  - THE SURFACE TO RECEIVE THE EIFS SHALL BE STRUCTURALLY SOUND, CLEAN, DRY AND FREE OF WARPAGE, RESIDUAL MOISTURE OR DAMAGE FROM MOISTURE. SURFACES SHALL BE UNIFORM WITH NO IRREGULARITIES GREATER THAN 1/8" IN 4'-0". SURFACES SHALL BE INSPECTED FOR COMPLIANCE WITH THE FOLLOWING REQUIREMENTS PRIOR TO INSTALLATION OF THE EIFS:
    - PLYWOOD SHEATHINGS SHALL MEET A P.A. (AMERICAN PLYWOOD ASSOCIATION) REQUIREMENTS FOR EXTERIOR OR EXPOSURE 1 CLASSIFICATION. APA DESIGN AND CONSTRUCTION GUIDELINES SHALL BE FOLLOWED FOR STORAGE, HANDLING AND INSTALLATION. MANUFACTURER'S PUBLISHED RECOMMENDATIONS SHALL BE FOLLOWED FOR STORAGE, HANDLING, STORAGE, HANDLING, INSTALLATION AND PROTECTION. ANY SHEATHING NOT IN COMPLIANCE SHALL BE REPLACED TO CONFORM WITH SPECIFICATION REQUIREMENTS PRIOR TO INSTALLATION OF THE EIFS.
    - CONCRETE, MASONRY OR PLASTER SURFACES SHALL BE PROPERLY CURED AND FREE OF DIRT, DUST, OIL, GREASE, MILDEW, FUNGUS, LATENCY, PAINT, EFFLORESCENCE AND ANY OTHER CONTAMINANT. ANY SURFACES NOT IN COMPLIANCE SHALL BE CORRECTED PER MANUFACTURER'S RECOMMENDATIONS PRIOR TO INSTALLATION OF THE EIFS.
    - AFTER SATISFACTORY INSPECTION OF SURFACES AND CORRECTION OF ANY DEVIATIONS FROM SPECIFICATION REQUIREMENTS, THE EIFS INSTALLATION MAY BEGIN PER MANUFACTURER'S INSTRUCTIONS.
    - THE STARTER STRIP OF MESH SHALL BE WIDE ENOUGH TO ADHERE 4" OF MESH ONTO THE WALL, BE ABLE TO WRAP AROUND THE BOARD EDGE AND COVER APPROXIMATELY 4" ON THE OUTSIDE SURFACE OF THE BOARD. THIS "BACKWRAP" PROCEDURE SHALL BE FOLLOWED AT ALL EXPOSED BOARD EDGES IN ACCORDANCE WITH DETAILS (EXAMPLE-WINDOW AND DOOR HEADS AND JAMBS).

- 3.05 FINISH COAT
- ACRYLIC BASED TEXTURED WALL COATING. SEE E.I.F.S. FORMULAS FOR FINISH COLOR.
- 3.06 JOB MIXED INGREDIENTS
- PORTLAND CEMENT: ASTM C 150, TYPE I
  - WATER: CLEAN AND POTABLE.
- 3.07 EXECUTION
- UNDER NO CIRCUMSTANCES SHALL ANY OF THE PRODUCTS BE ALTERED BY ADDING ANY ADDITIVES, EXCEPT FOR SMALL AMOUNTS OF CLEAN WATER AS DIRECTED ON LABEL. ANTIFREEZE, ACCELERATORS, RAPID BINDERS, ETC., ARE FORBIDDEN.
  - THE SURFACE TO RECEIVE THE EIFS SHALL BE STRUCTURALLY SOUND, CLEAN, DRY AND FREE OF WARPAGE, RESIDUAL MOISTURE OR DAMAGE FROM MOISTURE. SURFACES SHALL BE UNIFORM WITH NO IRREGULARITIES GREATER THAN 1/8" IN 4'-0". SURFACES SHALL BE INSPECTED FOR COMPLIANCE WITH THE FOLLOWING REQUIREMENTS PRIOR TO INSTALLATION OF THE EIFS:
    - PLYWOOD SHEATHINGS SHALL MEET A P.A. (AMERICAN PLYWOOD ASSOCIATION) REQUIREMENTS FOR EXTERIOR OR EXPOSURE 1 CLASSIFICATION. APA DESIGN AND CONSTRUCTION GUIDELINES SHALL BE FOLLOWED FOR STORAGE, HANDLING AND INSTALLATION. MANUFACTURER'S PUBLISHED RECOMMENDATIONS SHALL BE FOLLOWED FOR STORAGE, HANDLING, STORAGE, HANDLING, INSTALLATION AND PROTECTION. ANY SHEATHING NOT IN COMPLIANCE SHALL BE REPLACED TO CONFORM WITH SPECIFICATION REQUIREMENTS PRIOR TO INSTALLATION OF THE EIFS.
    - CONCRETE, MASONRY OR PLASTER SURFACES SHALL BE PROPERLY CURED AND FREE OF DIRT, DUST, OIL, GREASE, MILDEW, FUNGUS, LATENCY, PAINT, EFFLORESCENCE AND ANY OTHER CONTAMINANT. ANY SURFACES NOT IN COMPLIANCE SHALL BE CORRECTED PER MANUFACTURER'S RECOMMENDATIONS PRIOR TO INSTALLATION OF THE EIFS.
    - AFTER SATISFACTORY INSPECTION OF SURFACES AND CORRECTION OF ANY DEVIATIONS FROM SPECIFICATION REQUIREMENTS, THE EIFS INSTALLATION MAY BEGIN PER MANUFACTURER'S INSTRUCTIONS.
    - THE STARTER STRIP OF MESH SHALL BE WIDE ENOUGH TO ADHERE 4" OF MESH ONTO THE WALL, BE ABLE TO WRAP AROUND THE BOARD EDGE AND COVER APPROXIMATELY 4" ON THE OUTSIDE SURFACE OF THE BOARD. THIS "BACKWRAP" PROCEDURE SHALL BE FOLLOWED AT ALL EXPOSED BOARD EDGES IN ACCORDANCE WITH DETAILS (EXAMPLE-WINDOW AND DOOR HEADS AND JAMBS).

### ALL AREAS WHERE THE EIFS MEETS DISSIMILAR MATERIAL OR TERMINATES (FOR EXAMPLE, WINDOW AND DOOR FRAMES) SHALL HAVE THE INSULATION BOARD CUT BACK FROM THE ADJOINING MATERIAL A MINIMUM OF 1" TO FORM AN ISOLATION JOINT.

### E. APPLY THE ADHESIVE TO THE BACK OF THE INSULATION BOARD STAGGER VERTICAL JOINTS AND INTERLOCK BOARDS AT ALL INSIDE AND OUTSIDE CORNERS. APPLY FIRM PRESSURE OVER ENTIRE SURFACE OF THE BOARDS TO INSURE UNIFORM CONTACT. BOARDS SHALL BRIDGE SHEATHING JOINTS BY A MINIMUM OF 8". ALL BOARD JOINTS SHALL BE BUTTED TIGHTLY TOGETHER TO ELIMINATE ANY THERMAL BREAKS IN THE EIFS. CARE MUST BE TAKEN TO PREVENT ANY ADHESIVE FROM GETTING BETWEEN THE JOINTS OF THE BOARDS. ALL OPEN JOINTS IN THE INSULATION BOARD LAYER SHALL BE FILLED WITH SLIVERS OF INSULATION OR AN APPROVED SPRAY FOAM.

### F. NAILS, SCREWS, OR ANY OTHER TYPE OF NONTHERMAL MECHANICAL FASTENER SHALL NOT BE USED.

### G. EXPANSION JOINTS ARE REQUIRED IN THE EIFS WHERE THEY EXIST IN THE SUBSTRATE, WHERE THE EIFS ADJOINS DISSIMILAR CONSTRUCTION, AND AT FLOOR LINES IN MULTILEVEL WOOD FRAME CONSTRUCTION. THE EIFS SHALL TERMINATE AT THE EXPANSION JOINT TO PROVIDE APPROPRIATE JOINT SIZE (SEE DETAILS) AND ALL BOARD EDGES SHALL BE COATED WITH APPROPRIATE GROUND COAT AND MESH IN ACCORDANCE WITH STANDARD "BACKWRAPPING" PROCEDURE. APPROPRIATE SEALANT/PRIMER AND BACKER SHALL BE INSTALLED AFTER GROUND COAT IS FULLY DRY TO PREVENT ANY WATER FORM GETTING INTO OR BEHIND THE SYSTEM.

### H. USE OF PLASTIC OR METAL CORNER BEADS, STOPBEADS, ETC., IS FORBIDDEN.

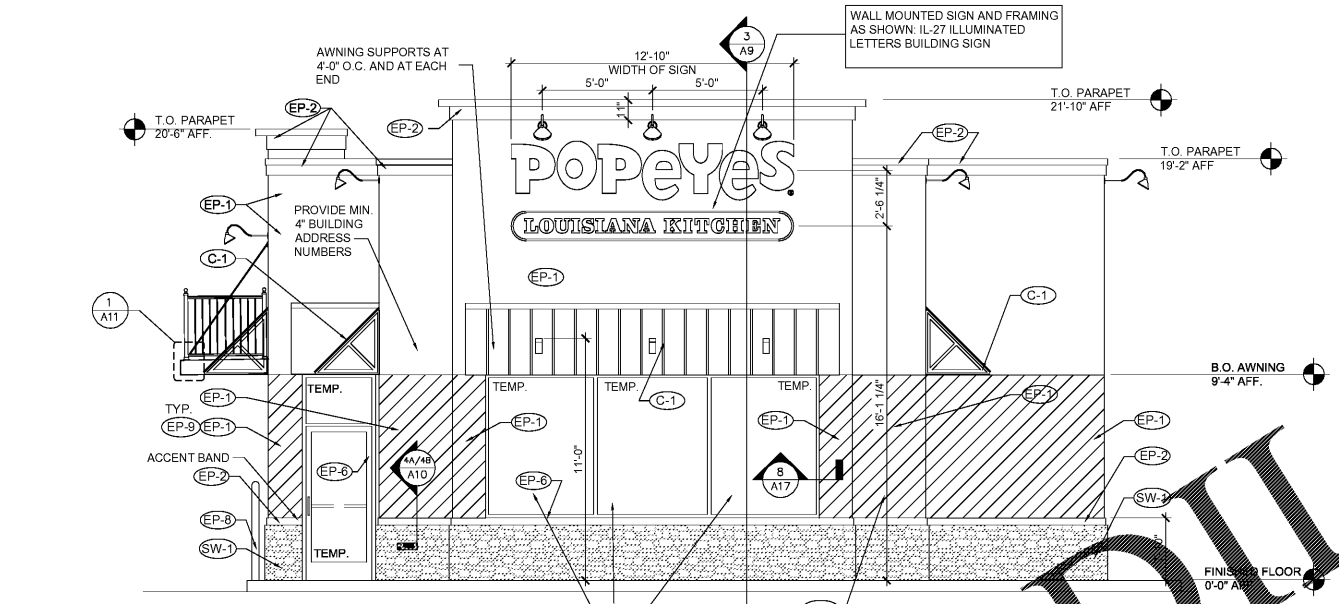
### I. APPLY APPROPRIATE GROUND COAT OVER THE INSULATION BOARD WITH PROPER SPRAY EQUIPMENT OR A STAINLESS STEEL TROWEL TO A UNIFORM THICKNESS OF APPROXIMATELY 1/16" WORK HORIZONTALLY OR VERTICALLY IN STRIPS OF 40" AND IMMEDIATELY EMBED STANDARD REINFORCING MESH INTO THE WET GROUND COAT. THE MESH SHALL BE DOUBLE WRAPPED AT ALL CORNERS AND OVERLAPPED NOT LESS THAN 2-1/2" AT MESH JOINTS. AVOID RETARD DRYING CONDITIONS EXTEND DESIRED TIME AND RELAX AND MAY REQUIRE ADDED MEASURES OF PROTECTION AGAINST WIND, DUST, DIRT, RAIN AND FREEZING.

### J. DUPLICATE INSTALLATION PROCESS NOTED IN 3.01 USING STANDARD MESH CREATING SECOND MESH LAYER AND ADDITIONAL IMPACT RESISTANCE. ALLOW TO DRY BEFORE APPLICATION OF EITHER STO PRIMER (OPTIONAL) OR STO FINISH.

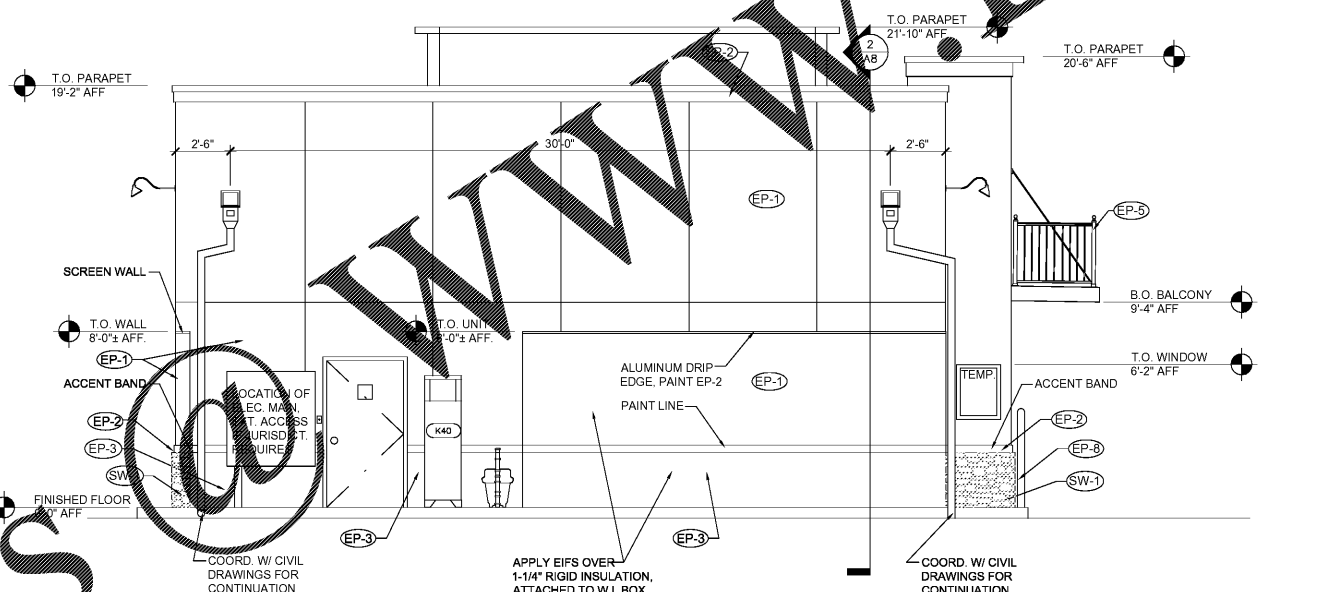
### K. IF A PRIMER IS USED, APPLY WITH BRUSH, ROLLER OR PROPER SPRAY EQUIPMENT OVER CLEAN, DRY GROUND COAT AND ALLOW TO DRY THOROUGHLY BEFORE APPLYING FINISH. P. APPLY FINISH DIRECTLY OVER THE GROUND COAT (OR PRIMER GROUND COAT) ONLY AFTER THE GROUND COAT/PRIMER HAS THOROUGHLY DRIED. THE FINISH SHALL BE APPLIED BY SPRAYING, TROWELING OR TROWELING WITH A STAINLESS STEEL TROWEL, DEPENDING ON FINISH SPECIFIED. GENERAL RULES FOR APPLICATION OF FINISHES ARE TO FOLLOW:

- USE A CLEAN, RUST FREE, HIGH SPEED MIXER TO THOROUGHLY MIX THE FINISH TO A UNIFORM CONSISTENCY (SYSTEM COLOR OF CLEARANCE MIXTURE MAY BE ADDED FOR VISIBILITY).
- VOID APPLICATION IN DIRECT SUNLIGHT.
- APPLY FINISH IN A CONTINUOUS APPLICATION, ALWAYS WORKING TO ADJACENT EDGE.
- WHERE CONDITIONS AFFECT APPLICATION AND DRYING TIME, DRY CONDITIONS LIMIT WORKING TIME AND ACCELERATE DRYING AND MAY REQUIRE ADJUSTMENTS IN THE SCHEDULING OF WORK TO ACHIEVE DESIRED RESULTS; COOL OR DAMP CONDITIONS EXTEND DESIRED TIME AND RETARD DRYING AND MAY REQUIRE ADDED MEASURES OF PROTECTION AGAINST WIND, DUST, DIRT, RAIN AND FREEZING.
- AESTHETIC "U"-GROOVES MAY BE DESIGNED INTO THE SYSTEM. (A MINIMUM OF 3/4" INSULATION BOARD MUST BE LEFT AFTER ANY GROOVES ARE CUT).
- "R" (RILLED TEXTURE) FINISHES MUST BE FLOATED WITH A PLASTIC TROWEL TO ACHIEVE THEIR RILLED TEXTURE.
- AVOID INSTALLING SEPARATE BATCHES OF FINISH SIDE-BY-SIDE.
- APPLY FINISH COLOR TO EIFS MIX AND APPLY TO WALL COLOR TO MATCH EXTERIOR FINISH SCHEDULE COLORS.

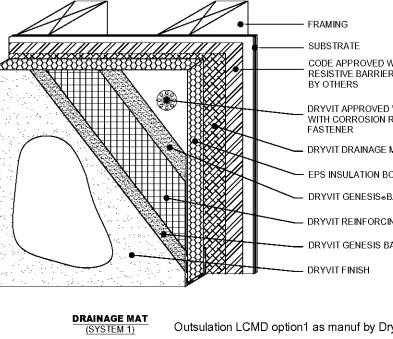
### L. EXTERIOR INSULATION AND FINISH TEXTURE SYSTEM: APPLY HIGH IMPACT SYSTEM ADJACENT TO DOORS FOR ADDITIONAL IMPACT RESISTANCE. USING INTERMEDIATE MESH USE THE STANDARD SYSTEM SPECIFICATIONS AT ALL OTHER LOCATIONS.



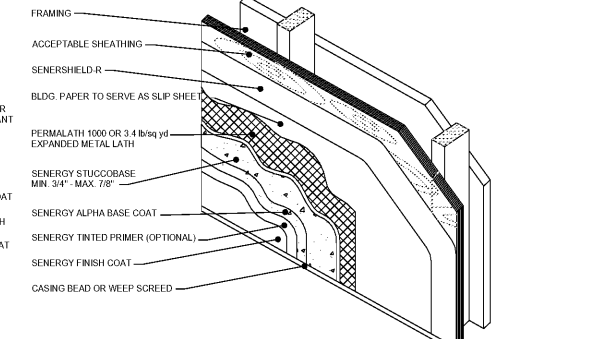
1 FRONT ELEVATION  
A5 1/4"=1'-0"



2 REAR ELEVATION  
A5 1/4"=1'-0"



3A TYP. EIFS DETAIL  
A5 NTS



3B TYP. STUCCO DETAIL  
A5 NTS  
ALTERNATE

- SIGN MANUFACTURERS**
- AAA CONTACT: LINDSEY OLIVER PHONE: (337) 233-5086 x3012 EMAIL: LINDSEY@AAASIGNS.COM
  - ALLEN INDUSTRIES CONTACT: DAVID SIMMONS PHONE: (336) 615-8731 EMAIL: DAVID.SIMMONS@ALLENINDUSTRIES.COM
  - ENTERA CONTACT: JASON BRAGG PHONE: (850) 392-0801 EMAIL: JASON.BRAGG@ENTERABRANDING.COM
  - LOREN SIGNS CONTACT: DAVE PALMGREN PHONE: (662) 309-5660 EMAIL: DAVE.PALMGREN@LORENINDUSTRIES.COM WARRANTY CONTACT: DAN LORENZON PHONE: (562) 946-7545 EMAIL: DAN.L@LORENINDUSTRIES.COM
  - SIGN RESOURCE CONTACT: JEFF EGLE PHONE: (323) 318-1455; CELL: (818) 777-1456 EMAIL: JEFF@SIGNRESOURCE.COM

EXTERIOR FINISH NOTES	
<b>STO COLORS</b>	
NA 10-0016 - DELIGHTFUL GOLDEN	
NA01-0061 - EXOTIC RED	
NA 10-0017 - MOCHA BROWN	
<b>DRYVIT COLORS</b>	
POPE051020 - DELIGHTFUL GOLDEN	
POPE0210285 - EXOTIC RED	
POPE0310205 - MOCHA BROWN	
<b>E.I.F.S. WALL TEXTURE FINISH</b>	
Manuf.	Texture
STO	STO ESSENCE SWIRL
DRYVIT	QUARTZ PUTZ
<b>FINISH NOTES</b>	
THE FOLLOWING COMPONENTS CAN BE PURCHASED FROM THE APPROVED SIGN VENDORS:	
•	STANDING SEAM ROOF
•	BALCONY RAILING
•	CLEARANCE BAR
•	MENU CANOPY
•	GUARD RAIL
•	AWNINGS
•	SHUTTERS
•	DUMPSTER GATES
•	INTERIOR LADDER

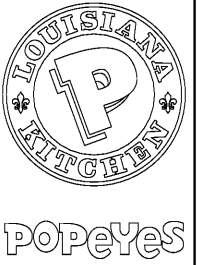
POPEYES LOUISIANA KITCHEN		EXTERIOR FINISH SCHEDULE				
NEW CONSTRUCTION AND REIMAGING		UPDATE: 1/5/2017				
Mark	Location	Supplier / Manuf.	Material	Specification	Color	Finish / Notes
EP-1	PARAWALL SURFACE ABOVE WANSKOT ACCENT TRIM		PAINT OR EIFS FORMULA	#2158-30	DELIGHTFUL GOLDEN	UltraSpec Satin
EP-2	CROWN/WALL SURFACE ACCENT TRIM	BENJAMIN MOORE	PAINT OR EIFS FORMULA	#2086-10	EXOTIC RED	UltraSpec Satin
EP-3	WANSKOT BELOW ACCENT TRIM/BEAR BLDG.		EIFS / METAL / PAINT	#2107-20	MOCHA BROWN	UltraSpec Satin
EP-4	SHUTTERS	SHUTTERCONTRACTOR.COM	1 1/2"x6" VINYL SHUTTERS (Bldg.)	L2 - VINYL	UNFINISHED	030 - PAINTABLE
EP-5	DRIF THRU WINDOW CANOPY AND RAILINGS	BENJAMIN MOORE	PAINT	#2040-10	RAINFORREST FOLiage	170 Semi Gloss
EP-6	STORE FRONT GLAZING	BENJAMIN MOORE	METAL / POWDER COAT	RAL 6009	HUNTER GREEN	SMOOTH
EP-7	STORE FRONT GLAZING	BENJAMIN MOORE	METAL / PAINT	#2040-10	RAINFORREST FOLiage	P-29 DTM Semi Gloss
EP-8	DUMPSTER WALLS / GATES	BENJAMIN MOORE	METAL / PAINT	#2107-20	MOCHA BROWN	UltraSpec Satin
EP-9	ANTI-GRAFFITI	BENJAMIN MOORE	PAINT		CLEAR GLOSS	M74-00 / MFS (2 COATS)
EP-10	STONE WANSKOT	BORAL STONE	VERSETTA: SIKALATED STONE VENEER		FLAME CREEK	NON-OVERLAPPING
EP-11	AWNING GRATE (OPT.)	QUIKRETE	VENEER STONE IMITATOR		MOCHA BROWN	1137-85
C-1	STANDING SEAM CANOPY	COPPER SALES, INC.	UNACLAD	UC-4 ALUMINUM	REGAL RED	12" OC / GAUGE PER LOCAL CODE REQUIREMENTS

**Popeyes**  
400 PERIMETER CENTER TERRACE  
SUITE 100  
ATLANTA, GA 30346  
404-458-4660

**hendon huckestein architects, PC**  
10.30.18  
architecture • planning • interior design  
2126 Morris Avenue Birmingham, AL 35203  
Phone (205) 322-1751  
Fax (205) 322-1778  
email info@hplaha.com  
www.hplaha.com

DRAWN BY: DS  
CHECKED BY: MRW. EH  
DATE: 10.30.2018  
HHHA PROJECT #18064.4

**PREMIER CAJUN KINGS, LLC - POPEYES**  
Near 431 Main St.  
Shofter, AL 36075  
LOUISIANA KITCHEN PLK DESIGN STANDARDS  
PLK1 1846-DL PROTOTYPE 46 SEATS / DUAL-LINE PRODUCTION



REVISIONS:  
PERMIT/BD SET 10.30.18

**A5**  
FRONT & REAR  
EXTERIOR ELEVATIONS

DATE: 10/18/2018  
CHECKED: MW