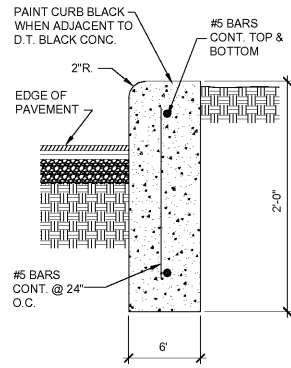
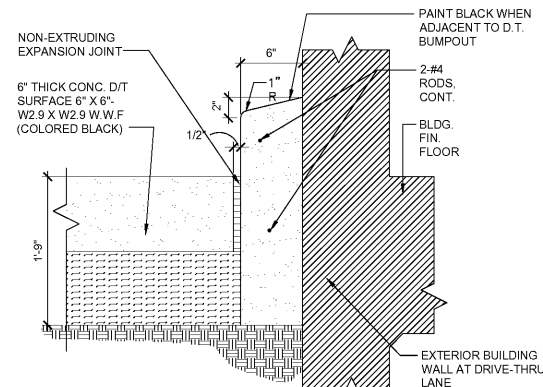


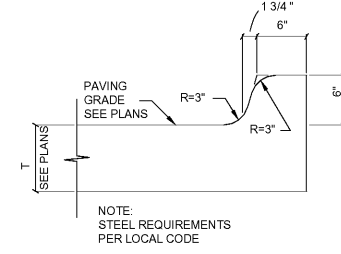
1 BOLLARD DETAIL
SD3 3/8"=1'-0"



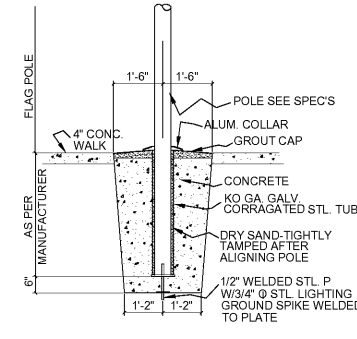
2 CURB DETAIL
SD3 3/8"=1'-0"



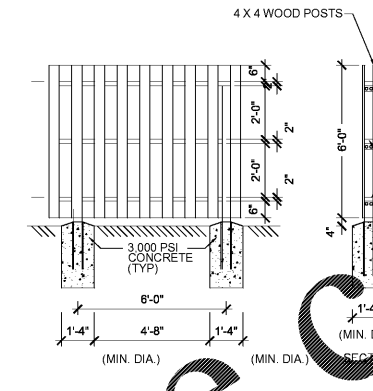
3 6" BARRIER @ DRIVE-THRU WINDOW
SD3 3/8"=1'-0"



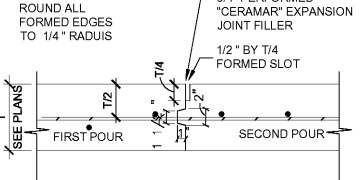
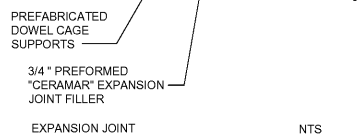
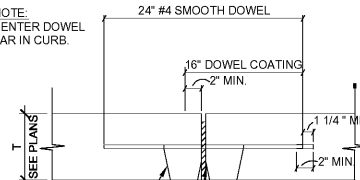
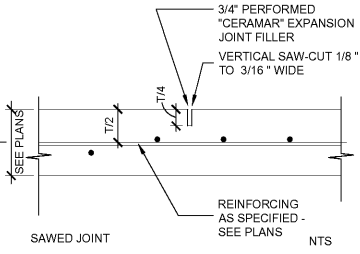
4 EXTERIOR CURB @ GUTTER
SD3 3/8"=1'-0"



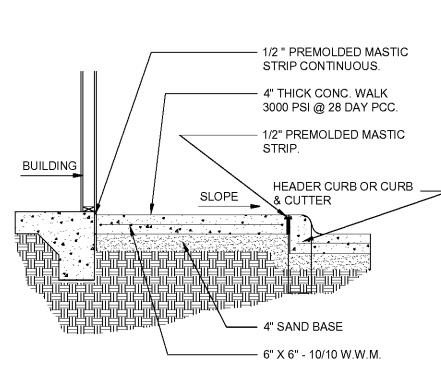
15 TYP. FLAG POLE BASE
SD3 3/8"=1'-0"



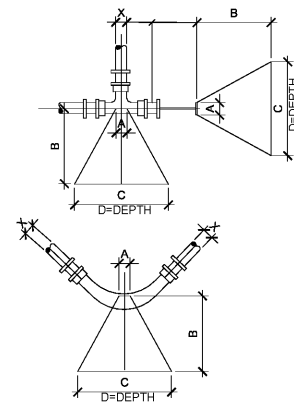
7 SHADOW BOX WOOD FENCE
SD3 3/8"=1'-0" IF USED



8 TYPICAL JOINT DETAIL
SD3 3/8"=1'-0"



5 SIDEWALK DETAIL
SD3 3/8"=1'-0"



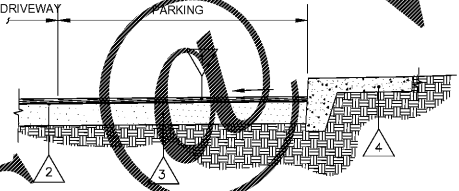
6 THRUST BLOCKS
SD3 3/8"=1'-0"

BLOCKING DIMENSIONS					
DEAD END AND TEES	X	A	B	C	D
8"	10"	2'-3"	3'-3"	2'-0"	3'-0"
12"	12"	3'-0"	4'-6"	3'-0"	3'-0"
8"	10"	2'-9"	4'-0"	2'-3"	3'-3"
12"	12"	4'-3"	6'-0"	3'-3"	3'-3"
8"	10"	1'-0"	2'-6"	2'-0"	2'-0"
12"	12"	1'-9"	3'-9"	1'-6"	1'-6"
8"	10"	0'-6"	1'-9"	1'-3"	1'-3"
12"	12"	0'	1'-9"	1'-6"	1'-6"

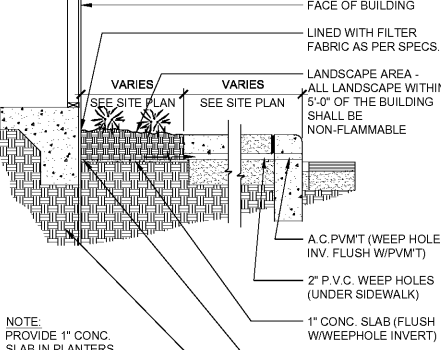
X= DIAMETER OF PIPE TO BE BLOCKED
NOTE: BLOCKING SHALL BE CONSTRUCTED AS PER AWWA STD #600, SECTION 12.3, OR LATEST REVISION

KEY TO TYPICAL PAVEMENT SECTIONS

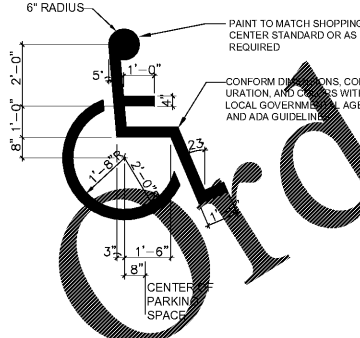
- 2" ASPHALTIC CONCRETE
- BITUMINOUS PRIME COAT AND TOPPING
- 6" BASE COURSE, REFER TO GEOTECHNICAL REPORT.
- CONCRETE SIDEWALK



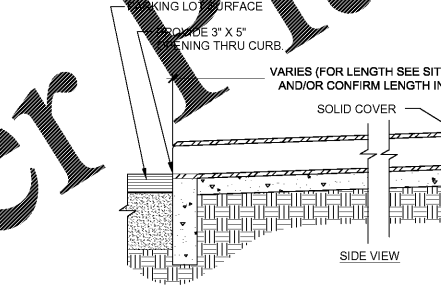
10 TYP. ASPHALT PAVEMENT DETAIL
SD3 3/8"=1'-0"



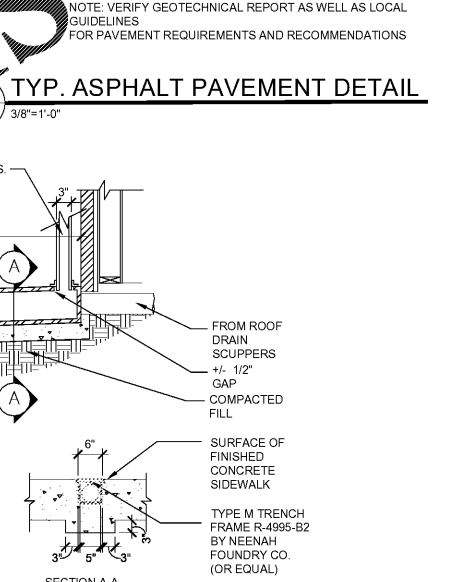
9 PLANTER SIDEWALK
SD3 3/8"=1'-0"



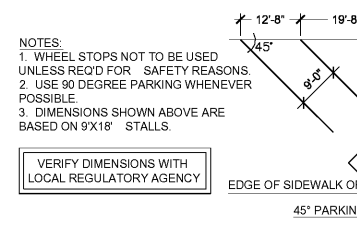
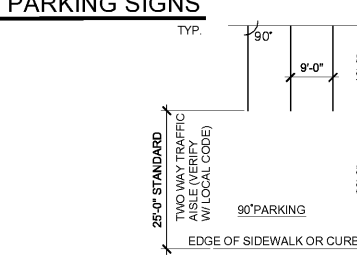
11 ACCESSIBLE PARKING SYMBOL
SD3 3/8"=1'-0"



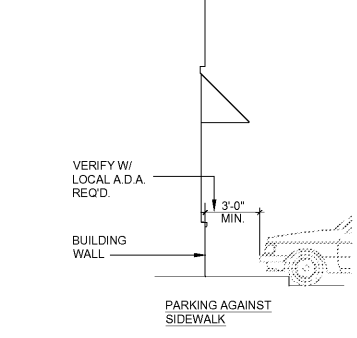
12 ROOF DRAIN FLUME
SD3 3/8"=1'-0"



13 EXTERIOR GREASE TRAP
SD3 3/8"=1'-0" SEE ALSO CIVIL & PLUMBING



16 TYP. PARKING CONFIGURATION
SD3 3/8"=1'-0" NTS



14 DUMPSTER GATE/ENCLOSURE
SD3 3/8"=1'-0"

POPEYES
400 PERIMETER CENTER TERRACE
SUITE 1000
ATLANTA, GA 30308
404-455-4660

Architectural
REGISTERED ARCHITECT
10.30.18

Shendon Huckestein Architects, PC
10.30.18
Architecture - planning - interior design
2124 Morris Avenue Birmingham, AL 35203
Phone (205) 322-1751
Fax (205) 322-1778
email info@shplusha.com
www.shplusha.com

DRAWN BY: DS
CHECKED BY: MRW, EH
DATE: 10.30.2018
HHHA PROJECT #18064.14

PREMIER CAJUN KINGS, LLC - POPEYES
Near 431 Main St,
Shorter, AL 36075
LOUISIANA KITCHEN PLK DESIGN STANDARDS
PLK1 1846-DL PROTOTYPE 46 SEATS / DUAL-LINE PRODUCTION

LOUISIANA KITCHEN

POPEYES

REVISIONS
PERMIT/BID SET 10.30.18

SD3
TYP. PAVEMENT AND SIDEWALK DETAILS
DATE: 10/18/2018
CHECKED: MW