

ELECTRICAL PANEL SCHEDULE

PANEL: A		SERVICE: 120/208V, 3P, 4W + GND		FEEDERS: SEE ONE LINE DIAGRAM	
PANEL TYPE: SQ-D "NOOD" OR EQUAL		BUS RATING: 200 A M.L.O.		MOUNTING: NEMA-1 RECESSED	
LOAD DESCRIPTION	NOTE	LOAD VOLT-AMP	WIRE	CB/P	LOAD DESCRIPTION
AREA LIGHTS	**	1080	10	20/2	1
AREA LIGHTS	**	1080	10	20/2	3
AREA LIGHTS	**	1080	10	20/2	5
AREA LIGHTS	**	1080	10	20/2	7
PYLON SIGNS *	**	1200	12	20/1	9
SECONDARY PYLON SIGN *	**	1200	12	20/1	11
DRIVE-THRU MENU SIGNS	**	720	12	20/1	13
DATA PRINTER RECEPTACLES	GFCI	600	12	20/1	15
DINING RECEPTACLES	**	600	12	20/1	17
CHANNEL LETTERS / LOGO	**	1200	12	20/1	19
RED LED LIGHTS	**	240	10	20/1	21
CHANNEL LETTERS / LOGO	**	1200	12	20/1	23
DINING ROOM RECEPTACLES	**	1200	12	20/1	25
EXTERIOR BUILDING LIGHTS	**	1475	12	20/1	27
COOL/FRZR LIGHTS/DOOR HTR/H.E.	**	400	12	20/1	29
ROOF/EXTERIOR RECEPTACLES	**	720	12	20/1	31
SERVICE COUNTER/CORRIDOR	**	360	12	20/1	33
D/T SPEED/SERVICE #90C CAMERA	**	540	12	20/1	35
KITCHEN AREA LIGHTS	**	1200	12	20/1	37
CRW/STORAGE RECEPTACLES	GFCI	540	12	20/1	39
CHANNEL LETTERS / LOGO	**	1200	12	20/1	41

TOTAL CONNECTED LOAD: 38,290 VA **PHASE 'A':** 13,200 VA **NOTES:** (TC) = WIRE THROUGH CONTACTOR.
TOTAL CONNECTED AMPS: 106 AMP **PHASE 'B':** 13,805 VA (HACR) = HACR TYPE BREAKER.
PANEL 'A' NOTES: (LO) = LOCKED BREAKER.
 1. ** ELECTRICAL CONTRACTOR TO WIRE THESE CIRCUITS THRU MASTER CONTACTOR PANEL. REFERENCE WIRING DIAGRAMS SHEET E-5.
 2. ALL BREAKERS SHALL BE RATED FOR SWITCHING DUTY.
 3. * VERIFY CIRCUIT REQUIREMENTS FOR PYLON SIGN.
 4. *** ZONES A & B ONLY. COORDINATE WITH HVAC.

ELECTRICAL PANEL SCHEDULE

PANEL: B		SERVICE: 120/208V, 3P, 4W + GND		FEEDERS: SEE ONE LINE DIAGRAM	
PANEL TYPE: SQ-D "NOOD" OR EQUAL		SIZE: 200 AMP M.L.O.		MOUNTING: NEMA-1 RECESSED	
LOAD DESCRIPTION	NOTE	LOAD VOLT-AMP	WIRE	CB/P	LOAD DESCRIPTION
SELF-SERVE DRINK DISPENSER #10	**	600	12	20/1	1
P.O.S. RECEPTACLES GFCI #8	IG/LO	1320	12	20/1	3
P.O.S. RECEPTACLES GFCI #10	IG/LO	1320	12	20/1	5
DRIVE-THRU DRINK DISPENSER #11	**	600	12	20/1	7
REAR DOOR BUZZER	**	720	12	20/1	9
DOOR ALARM	**	720	12	20/1	11
WATER HEATER	**	300	12	20/1	13
SERVICE CIR/D.T. RECEPT.	**	576	12	20/1	15
P.O.S. RECEPTACLES	IG/LO	800	12	20/1	17
SPARE	**	400	12	20/1	19
COFFEE/TEA BREWER #17	**	1820	12	20/2	21
GREASE STORAGE UNIT #31B	**	500	12	20/1	23
WATER BOOSTER #10	**	1428	12	20/1	25
SPARE	**	20/1	27	28	20/1
SPARE	**	20/1	29	30	20/2
SPARE	**	20/1	31	32	12
SPARE	**	20/1	33	34	20/1
SPARE	**	20/1	35	36	20/1
SPARE	**	20/1	37	38	20/1
SPARE	**	20/1	39	40	20/1
SPARE	**	20/1	41	42	20/1

TOTAL CONNECTED LOAD: 45,472 VA **PHASE 'A':** 14,206 VA **NOTES:** (TC) = WIRE THROUGH CONTACTOR.
TOTAL CONNECTED AMPS: 131 AMP **PHASE 'B':** 15,918 VA (HACR) = HACR TYPE BREAKER.
PANEL 'B' NOTES: (LO) = LOCKED BREAKER.
 1. * PROVIDE ISOLATED GROUND BUS.
 2. ** CONTRACTOR SHALL WIRE THESE CIRCUITS THRU MASTER CONTACTOR PANEL. REFERENCE WIRING DIAGRAM SHEET E-5.
 3. # PROVIDE HLO-1 HANDLE LOCK-OFF.

ELECTRICAL PANEL SCHEDULE

PANEL: D		SERVICE: 120/208/240V, 3P, 4W + GND		FEEDERS: SEE ONE LINE DIAGRAM	
PANEL TYPE: SQ-D "NOOD" OR EQUAL		BUS RATING: 150A M.L.O.		MOUNTING: FURNISHED BY EQUIPMENT SUPPLIER	
LOAD DESCRIPTION	NOTE	LOAD VOLT-AMP	WIRE	CB/P	LOAD DESCRIPTION
PHU/MICROWAVE	**	1920	12	20/2	1
PHU/MICROWAVE	**	1920	12	20/2	3
PHU/MICROWAVE	**	1920	12	20/2	5
PHU/MICROWAVE	**	1920	12	20/2	7
CONVEYOR TOASTER	**	1920	12	20/2	9
CONVEYOR TOASTER	**	1920	12	20/2	11
VERTICAL TOASTER	**	2880	10	30/2	13
VERTICAL TOASTER	**	2880	10	30/2	15
HEATED SURFACES	**	240	12	20/1	17
SPACE	**	2880	10	30/2	19
UTILITY	**	1920	12	20/1	21
SPACE	**	1920	12	20/1	23

TOTAL CONNECTED LOAD: 40560 VA **PHASE 'A':** 15,360 VA **NOTES:** (TC) = WIRE THROUGH CONTACTOR.
TOTAL CONNECTED AMPS: 112 AMP **PHASE 'B':** 16,320 VA (HACR) = HACR TYPE BREAKER.
PHASE 'C': 10,800 VA (LO) = LOCKED BREAKER.
 (GFCI) = GROUND FAULT CIRCUIT INTERRUPTOR
 (IG) = WIRE SEPARATE TO ISOLATED GROUND BUS.

NOTE: ALL RECEPTACLES TO PANEL 'D' MUST BE GFCI.

ELECTRICAL PANEL SCHEDULE

PANEL: M		A.I.C. RATING: 42,000		SERVICE: 120/208V, 3P, 4W + GND		FEEDERS: SEE ONE LINE DIAGRAM	
PANEL TYPE: SQ-D "1-LINE" OR EQUAL		SIZE: 800 AMP M.L.O.		MOUNTING: NEMA-1 RECESSED			
LOAD DESCRIPTION	NOTE	LOAD VOLT-AMP	WIRE	CB/P	LOAD DESCRIPTION	NOTE	LOAD DESCRIPTION
PANEL A		13200	3/0	200/3	1		PANEL B
		13805			2		
		11285			3		
RTU-1	HACR	3725	#8	50/3	3		PANEL D
		3725			4		
RTU-3	HACR	2544	#10	40/3	5		RTU-2
		2544			6		
EF-1 #23		350	#12	20/2	7		CONVECTION OVEN #36
		350			8		
SPACE		350	#12	20/2	9		
EF-2 #33		350	#12	20/2	10		FROZEN BEV. DISP.
		350			11		
WALK-IN BOX COOLER CONDENSER		465	#12	20/2	11		PANEL C
		465			12		
WALK-IN BOX FREEZER CONDENSER		3024	#10	30/3	13		RTU-4
		3024			14		
		3024			15		

TOTAL CONNECTED LOAD: 238823 VA **PHASE 'A':** 78692 VA **NOTES:** (TC) = WIRE THROUGH CONTACTOR.
TOTAL CONNECTED AMPS: 663 AMPS **PHASE 'B':** 81371 VA (HACR) = HACR TYPE BREAKER.
PHASE 'C': 78760 VA (LO) = LOCKED BREAKER.
 (GFCI) = GROUND FAULT CIRCUIT INTERRUPTOR
 (IG) = WIRE SEPARATE TO ISOLATED GROUND BUS.

ELECTRICAL PANEL SCHEDULE

PANEL: C		A.I.C. RATING: 42,000		SERVICE: 120/208V, 3P, 4W + GND		FEEDERS: SEE ONE LINE DIAGRAM	
PANEL TYPE: SQ-D "1-LINE" OR EQUAL		SIZE: 200 AMP MCB		MOUNTING: NEMA-1 RECESSED			
LOAD DESCRIPTION	NOTE	LOAD VOLT-AMP	WIRE	CB/P	LOAD DESCRIPTION	NOTE	LOAD DESCRIPTION
ELECTRIC FRYER #31	**	4667	#6	50/3	1		ELECTRIC FRYER #31
ROUTE THRU EMS CONTACTOR	**	4667			2		ROUTE THRU EMS CONTACTOR
ROUTE THRU EMS CONTACTOR	**	4667			3		
ELECTRIC FRYER #31	**	4667	#6	50/3	7		SPARE
ROUTE THRU EMS CONTACTOR	**	4667			8		
ROUTE THRU EMS CONTACTOR	**	1440	#8	35/2	9		
ROUTE THRU EMS CONTACTOR	**	1440			10		
		1440			11		
		1440			12		
		1440			13		
		1440			14		
		1440			15		
		1440			16		
		1440			17		
		1440			18		
		1440			19		
		1440			20		

TOTAL CONNECTED LOAD: 58884 VA **PHASE 'A':** 20108 VA **NOTES:** (TC) = WIRE THROUGH CONTACTOR.
TOTAL CONNECTED AMPS: 163 AMP **PHASE 'B':** 10108 VA (HACR) = HACR TYPE BREAKER.
PHASE 'C': 8668 VA (LO) = LOCKED BREAKER.
 (GFCI) = GROUND FAULT CIRCUIT INTERRUPTOR
 (IG) = WIRE SEPARATE TO ISOLATED GROUND BUS.

LOAD SUMMARY

KITCHEN LOADS

A	0
B	34840
D	15360
M	25962

TOTAL 76162 X 65% = 49505

LIGHTING LOADS

A	21860
B	0
D	0
M	0

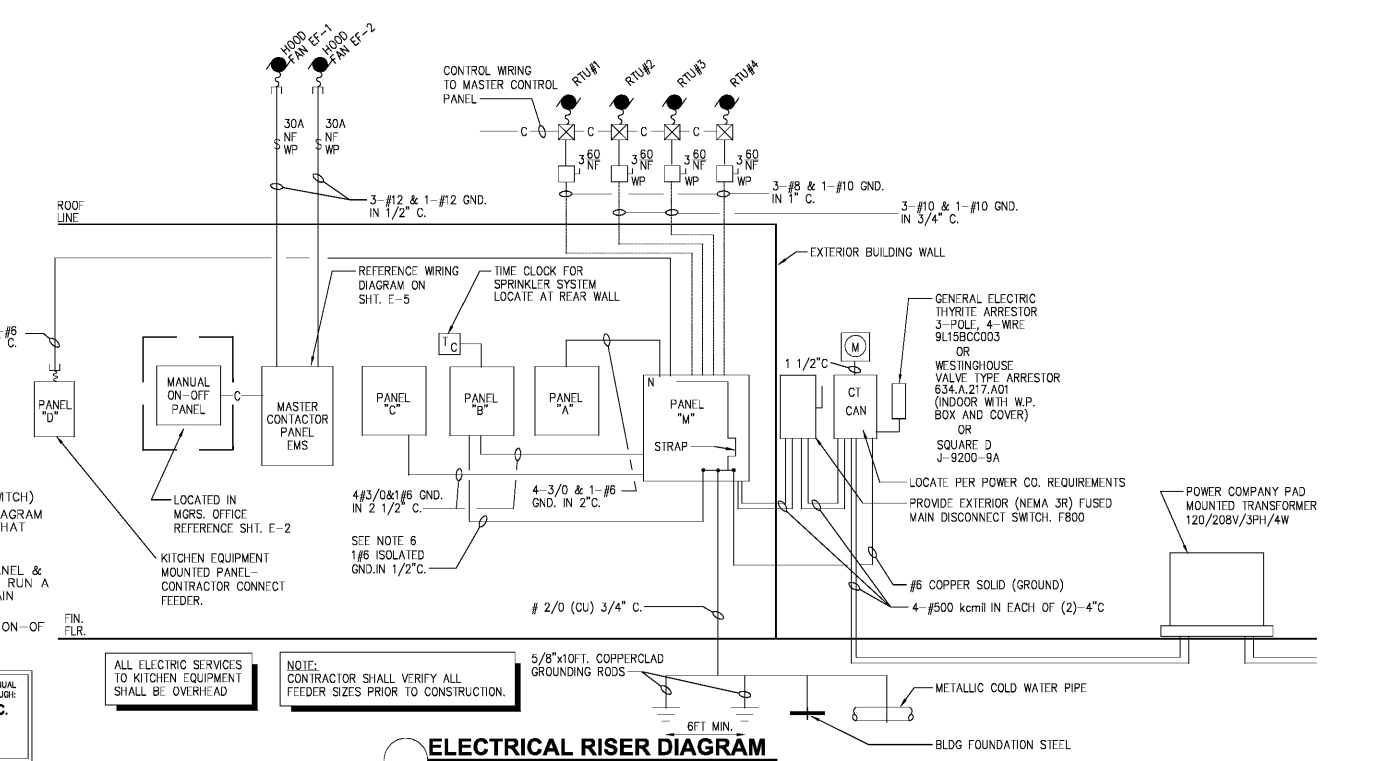
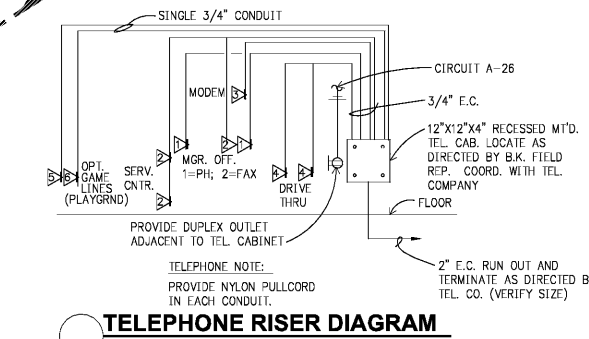
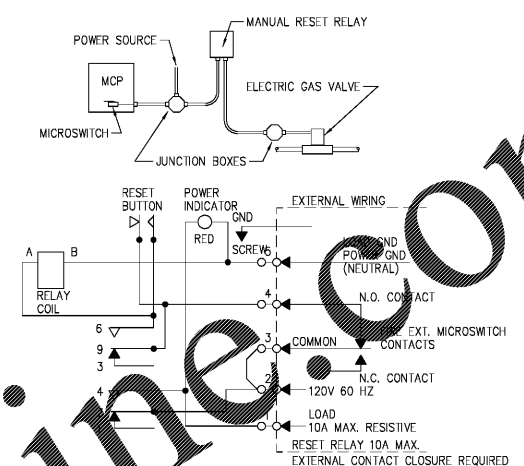
TOTAL 16330 X 125% = 20412

REMAINING LOADS

A	21860
B	10632
D	14840
M	31844

TOTAL 79076 X 100% = 79076

TOTAL ADJUSTED LOAD = 148,993 (414A)



RISER NOTES:

- ALL FUSED DISCONNECT SWITCHES TO BE PROVIDED BY CONTRACTOR.
- REFER TO PANEL NOTES.
- REFER TO GENERAL NOTES, SHEET E-2
- "T.C." INDICATES TIME CLOCK (OR TIME SWITCH)
- SEE MASTER CONTACTOR PANEL WIRING DIAGRAM FOR ADDITIONAL CIRCUITS FROM PANELS THAT ARE CONTROLLED THROUGH THE MASTER CONTACTOR PANEL.
- PROVIDE AN ISOLATED GROUND BUS IN PANEL & RUN CIRCUIT GROUND WIRE TO THIS BUS. RUN A #6 GREEN GROUND FROM THIS BUS TO MAIN SERVICE GROUND POINT.
- MASTER CONTACTOR PANEL AND MANUAL ON-OFF PANEL TO BE INCLUDED IN ELECTRICAL CONTRACTORS SCOPE OF WORK.

SUNCOAST ENVIRONMENTAL CONTROLS, INC.
 8565 151ST AVENUE NORTH
 LARGO, FLORIDA 34643
 PHONE (877) 544-6679

PROJECT #18026.18
 ROC-60 20/20 WAGE: APRIL 2015 DESIGN RELEASE
BURGER KING RESTAURANT
 DATE: 10/25/18
 DRAWN BY: DBM
 CHECKED BY: JACOBSON
 NO. DATE: 10/25/18
 RELEASED FOR CONSTRUCTION

PREMIER KINGS, INC.
 5529 CARMICHAEL ROAD
 MONTOMOERY, ALABAMA 36117
 PHONE: (205) 322-1778
 FAX: (205) 322-1778
 EMAIL: info@hpluhaha.com
 WWW.HPLUHAA.COM

2126 Morris Avenue
 Birmingham, AL 35203
 Phone: (205) 322-1751
 Fax: (205) 322-1778
 Email: info@hpluhaha.com
 www.hpluhaha.com

hendon huckestein architects, PC
 architecture • planning • interior design

Elizabeth Hyde
 PROFESSIONAL ENGINEER
 NO. 17960
 10/24/16

ELECTRICAL PANELS AND RISERS
 SHORTER, AL

Order Plans