

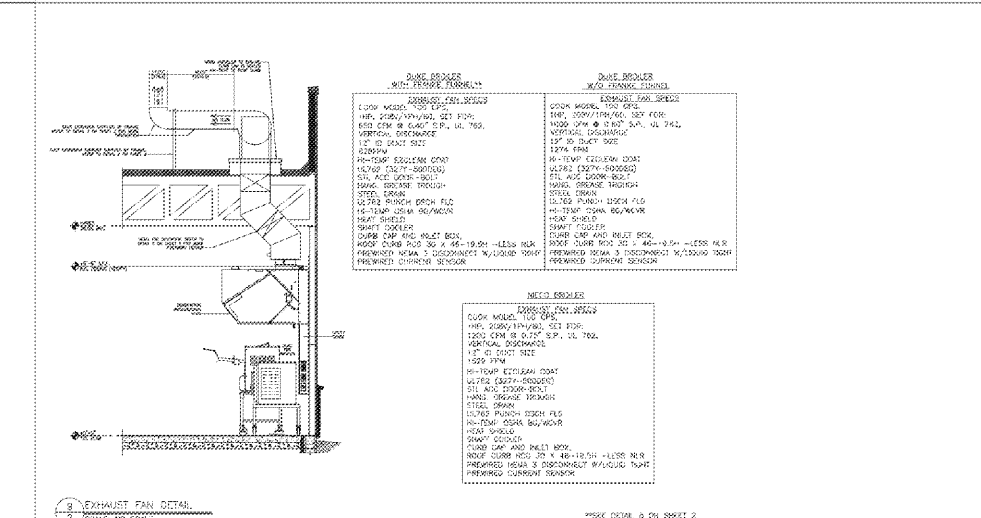
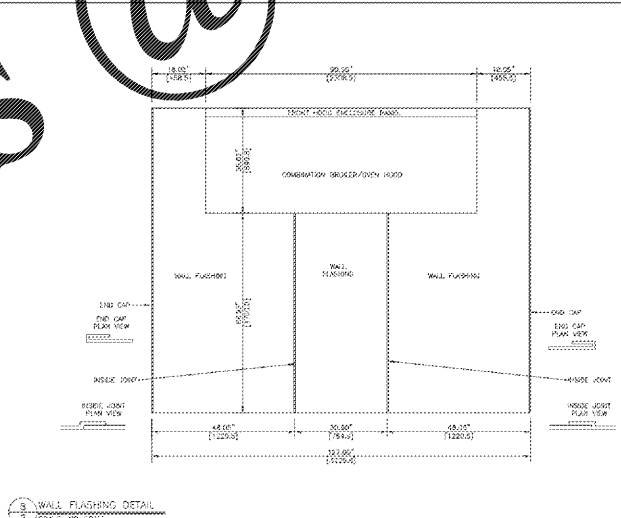
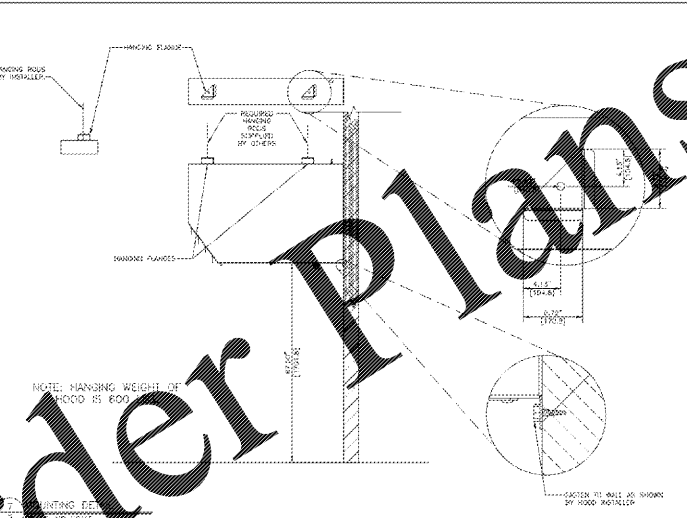
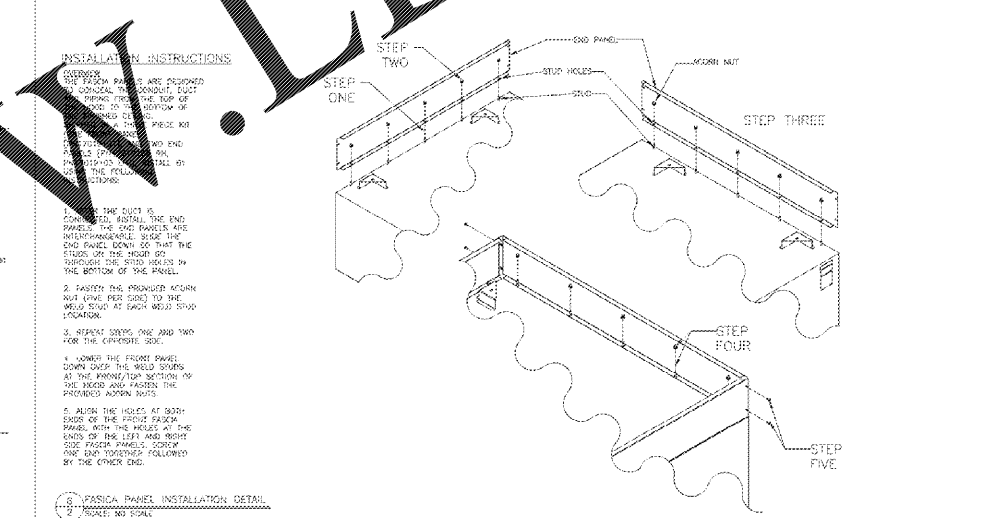
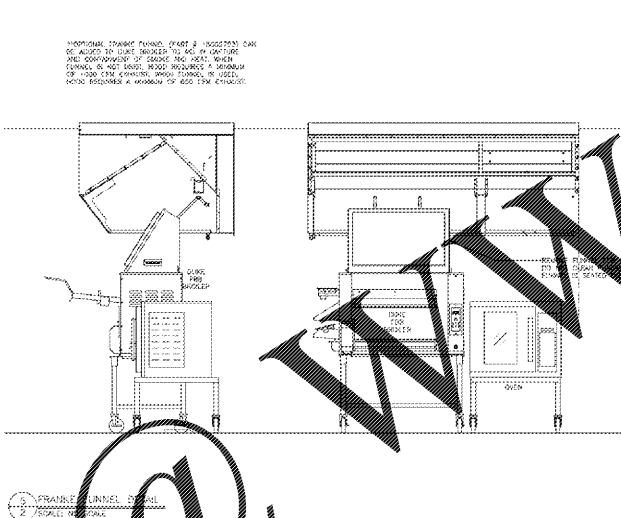
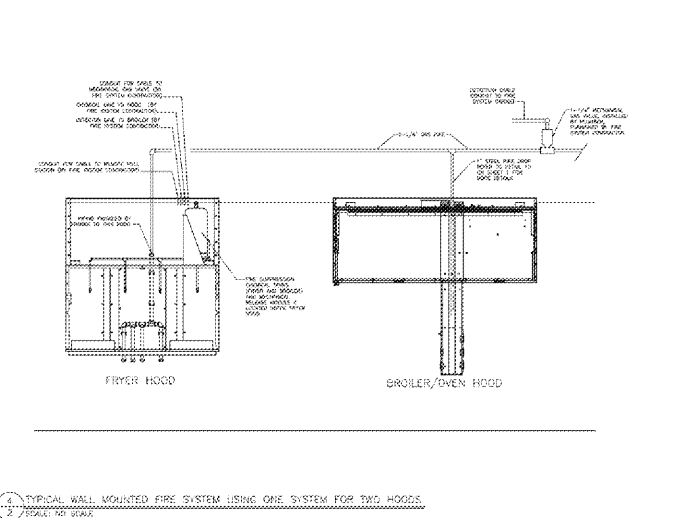
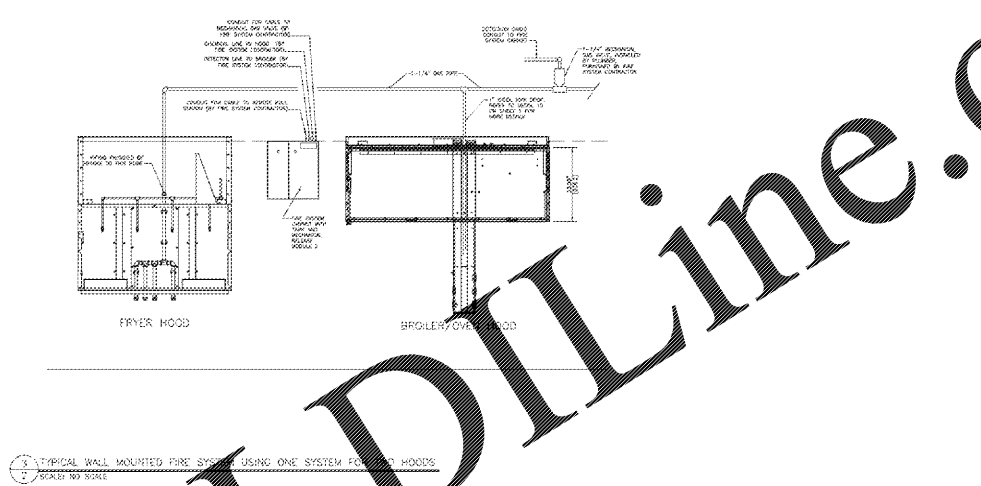
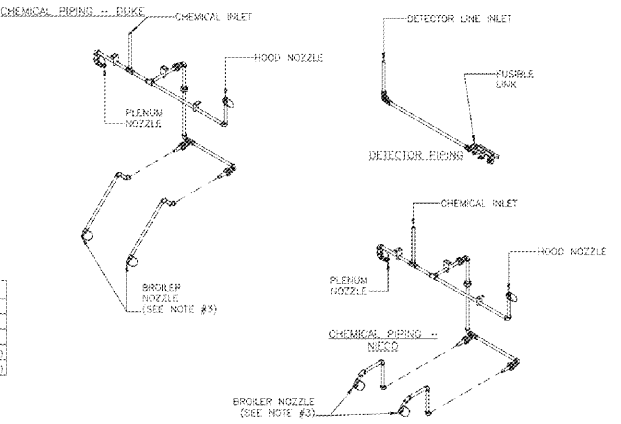
**AMEREX PIPING PART NUMBERS**

DUCT NOZZLE	PART #116419
PLENUM NOZZLE	PART #118827
FUSIBLE LINK	PART #116449
DUKE NOZZLES	PART #137229
NECO NOZZLES	PART #137239

**NOTES:**  
 1. ALL FUSIBLE LINKS ARE 900°  
 2. ALL BLOW OFF CAPS ARE HIGH TEMP METAL PART #110004  
 3. PIPE DROPS, NOZZLES AND SWIVEL ELBOWS FURNISHED AND INSTALLED BY THE FIRE SYSTEM CONTRACTOR.

**ANSUL PIPING PART NUMBERS**

DUCT NOZZLE	PART #2746, #19337
PLENUM NOZZLE	PART #1310, #19236
FUSIBLE LINK	PART #25819
DUKE NOZZLES	PART #12485, #19340
NECO NOZZLES	PART #12483, #19340



NO.	DATE	REVISION
1		
2		
3		
4		
5		
6		
7		
8		
9		
10		
11		
12		
13		
14		
15		
16		
17		
18		
19		
20		
21		
22		
23		
24		
25		
26		
27		
28		
29		
30		
31		
32		
33		
34		
35		
36		
37		
38		
39		
40		
41		
42		
43		
44		
45		
46		
47		
48		
49		
50		

NO.	DATE	REVISION
1		
2		
3		
4		
5		
6		
7		
8		
9		
10		
11		
12		
13		
14		
15		
16		
17		
18		
19		
20		
21		
22		
23		
24		
25		
26		
27		
28		
29		
30		
31		
32		
33		
34		
35		
36		
37		
38		
39		
40		
41		
42		
43		
44		
45		
46		
47		
48		
49		
50		

NO.	DATE	REVISION
1		
2		
3		
4		
5		
6		
7		
8		
9		
10		
11		
12		
13		
14		
15		
16		
17		
18		
19		
20		
21		
22		
23		
24		
25		
26		
27		
28		
29		
30		
31		
32		
33		
34		
35		
36		
37		
38		
39		
40		
41		
42		
43		
44		
45		
46		
47		
48		
49		
50		

2 OF 3

**Shane R. Hamilton P.E.**  
 CONSULTING ENGINEER  
 1717 N. Howard Avenue  
 Tampa, FL 33607 (813) 251-6848

FRANKIE  
 FRANKIE FRANCHISE SYSTEMS, INC.  
 800 Houston Parkway  
 Houston, TX 77061-0727  
 Tel: 281-461-0000  
 Fax: 281-461-0001  
 www.frankie.com

**BURGER KING**  
 # 81 COMBO HOOD  
 INSTALLATION DETAILS

3762 E  
 GALLOWAY RD.  
 GALLOWAY, AR

**ARCHITECTURE**

**ORDER PLANS @ WWW.WLDLINE.COM**

STORE #  
 RUC-10 20/20 IMAGE: SEPTEMBER, 2016 DESIGN RELEASE  
**BURGER KING RESTAURANT**  
 OFF OF I-40, THEN MAYBELLE RD.  
 GALLOWAY, AR  
 TYPE-1 HOOD DETAILS (BROILER)

M-7