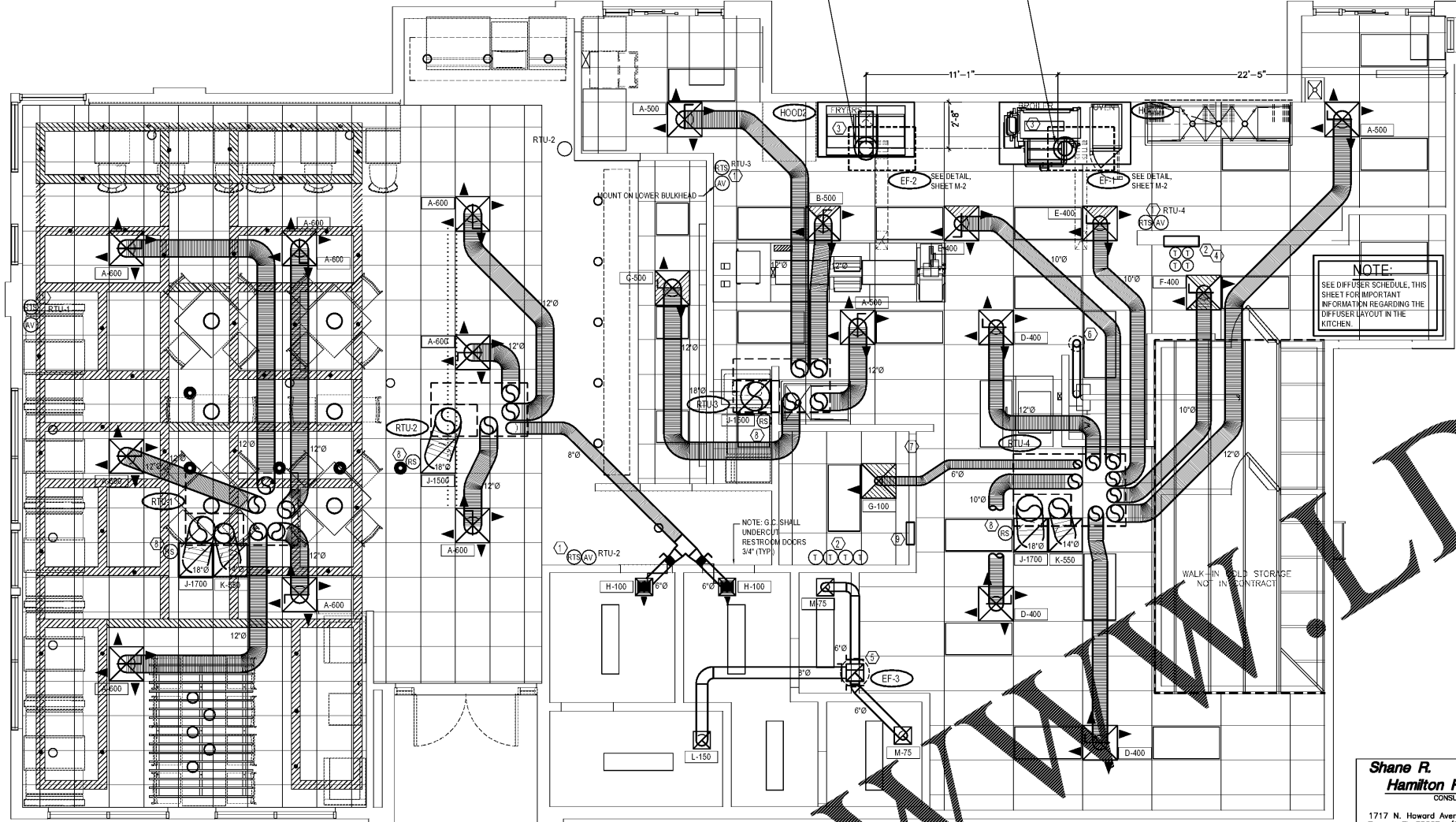


VERIFY LOCATION ON SITE WITH MOST RECENT KITCHEN EQUIPMENT PLANS. MARK RISER LOCATION ON FLOOR AND PLUMBBO UP FOR ACCURATE LOCATION OF DECK PENETRATION. DIMENSIONS SHOWN ARE FROM STUDIOS. HVAC CONTRACTOR SHALL INSTALL ROUND METAL DOUBLE-WALLED EXHAUST DUCT FOR FRYER HOOD AND BROILER HOOD FROM COLLAR UNITS TO PLUMBBO ON FAN ON ROOF AS SHOWN. REFER TO ROOF PLAN ON SHEET M-2 FOR POSITION OF CURB AND FAN. HOOD, FAN, AND DUCT FURNISHED BY OTHERS, INSTALLED BY HVAC CONTRACTOR.



DRAWING INFORMATION		
DATE	DESCRIPTION	BY
04-30-18	ARCH. REVIEW	TJ

NCA
CONSULTANTS/GROUP
4685 140TH AVE. NORTH, SUITE #1001
CLEARWATER, FLORIDA
PHONE: (877) 530-0079
CALL NCA MARKETING FOR PRICING
NCA JOB# 18-528

ATTENTION GENERAL CONTRACTOR "RE-ENGINEERING" DEVIATIONS FROM THE SHOWN DESIGN AND REQUIRED HVAC EQUIPMENT MUST BE APPROVED IN ADVANCE BY THE ARCHITECT AND PROFESSIONAL ENGINEER. UNAUTHORIZED SUBSTITUTIONS OR ALTERATIONS WILL VOID THE SIGNATURE AND SEAL OF THE PROFESSIONAL ENGINEER AND LEAVE VIOLATORS RESPONSIBLE FOR THE DESIGN OF SIGNED AND SEALED DRAWINGS.

- CONTRACTORS NOTES**
- HVAC CONTRACTOR**
- THE HVAC CONTRACTOR SHALL FURNISH AND INSTALL THE HVAC SYSTEM AS SHOWN ON THE NCA HVAC EQUIPMENT PACKAGE NOTE, THIS SHEET.
 - THE HVAC CONTRACTOR SHALL INSTALL EXHAUST HOOD. REFER TO MOST RECENT KITCHEN PLANS ON SITE. INSTALL ALL EXHAUST DUCT PER MANUFACTURERS INSTALLATION INSTRUCTIONS. SEE SHEETS FOR VERIFICATION. VERIFY LOCATION ON SITE WITH MOST RECENT KITCHEN EQUIPMENT PLAN.
 - AIR CONDITIONING UNIT CURBS SHALL BE PROVIDED BY NCA CONSULTANTS.
 - AIR CONDITIONING UNIT CURBS SHALL BE FABRICATED BY NCA CONSULTANTS FROM 18 GA. GALVANIZED METAL WITH WELDED SEAMS. WATER TIGHT AND INTERNALLY INSULATED.
 - SHIMS SHALL BE PROVIDED BY HVAC CONTRACTOR BETWEEN THE ROOF DECK AND THE CURB AS NEEDED TO COMPENSATE FOR ROOF PITCH.
 - ALL FLEX DUCT SHALL BE FOIL-BACKED, R-8, U.L. LISTED, CLASSIFIED AS A CLASS 1 AIR DUCT, AND MEET LOCAL CODE REQUIREMENTS.
 - INCLUDING ANY EXPOSED DUCTWORK, ALL NON-FLEXIBLE DUCT AND ALL AIR DISTRIBUTION DEVICES SHALL BE INSULATED WITH R-2 POLYURETHANE FOIL-BACKED INSULATION, WITH FIRE AND SMOKE RATING (25)-[50].
 - ALL DUCTWORK SHALL BE INDEPENDENTLY HUNG FROM STRUCTURAL MEMBERS.
 - ALL DUCTWORK SHALL BE FABRICATED AND INSTALLED PER SMACNA LOW-VELOCITY DUCT MANUAL (LATEST ISSUE).
 - UNLESS OTHERWISE NOTED, EVERY SUPPLY TAP COLLAR SHALL HAVE A LOCKING MANUAL VOLUME DAMPER.
 - THE HVAC CONTRACTOR SHALL COORDINATE DIFFUSER LOCATIONS ON SITE WITH THE MOST RECENT REFLECTED CEILING PLAN.
 - THE HVAC CONTRACTOR SHALL FURNISH A WRITTEN GUARANTEE COVERING A ONE-YEAR PERIOD FOR ALL EQUIPMENT AND AN ADDITIONAL FOUR-YEAR PERIOD FOR THE COMPRESSORS IN THE AIR CONDITIONING UNITS.
 - UPON COMPLETION OF PROJECT THE HVAC CONTRACTOR SHALL HIRE AN A.A.B.C. OR N.E.B.B. CERTIFIED, INDEPENDENT TEST AND BALANCE COMPANY TO CONDUCT A COMPLETE, CERTIFIED TEST AND BALANCE OF ALL HVAC EQUIPMENT. PROVIDE A WRITTEN REPORT TO NCA CONSULTANTS. ALL CAPACITIES MUST BE TO AMOUNTS INDICATED ON THE FLOOR PLANS AND SCHEDULES.
 - ALL FANS SHALL BE U.L. LISTED.
 - THE HVAC CONTRACTOR SHALL VERIFY LOCATIONS OF THE EXHAUST HOOD AND EF-1 FROM MOST RECENT KITCHEN EQUIPMENT PLANS ON SITE. THIS IS TO ENSURE NO OFFSETS IN EXHAUST DUCTWORK.
 - "ENERGYWISE" CONTRACTOR SHALL MAKE ALL LOW-VOLTAGE WIRING FINAL CONNECTIONS FOR ALL HVAC EQUIPMENT INCLUDING SENSORS, THERMOSTATS, AUDIO-VISUAL ANNUNCIATORS, ROOF-TOP UNITS, SMOKE DETECTORS & "ENERGYWISE" ENERGY MANAGEMENT SYSTEMS PANEL.

Shane R. Hamilton P.E.
CONSULTING ENGINEER
1717 N. Howard Avenue
Tampa, FL 33607 (813) 251-8848

FLOOR PLAN - HVAC
SCALE 1/4" = 1'-0" WHEN PLOTTED 36" X 24"

- KEYED NOTES**
- LOCATION OF ALL ALARMS ARE JUST A GENERAL LOCATION. AND PLACEMENT SHOULD BE LOCATED IN THE FIELD FOR PRACTICAL INSTALLATION. LOCATIONS SHALL BE IN THE SAME ZONE AS THE INDICATED SMOKE DETECTOR WITH PRACTICAL VISIBILITY TO THAT ZONE. FOR LOW VOLTAGE WIRING REFER TO THE INSTALLATION DIAGRAMS. (AV) VISUAL / (AUD) ALARMS WITH CIRCUIT LOOPED THRU SMOKE DETECTOR AS PER NFPA-72. ALARMS SHALL BE ENERGIZED DURING A SMOKE DETECTION EVENT. SMOKE DETECTOR SHALL SIGNAL FIRE ALARM SYSTEM PANEL (IF USED). LABEL AS THERE PERSPECTIVE RTU ZONE, SUCH AS FRONT DINING, OR REAR DRIVE THRU ZONE, ETC.
 - (RTS) REMOTE TEST STATIONS MAY BE LOCATED IN DOUBLE GANG BOX TO HOUSE BOTH COMPONENTS OR SEPARATE SINGLE GANGS FOR REMOTE LOCATIONS. REMOTE SHALL BE LABELED TO THE ASSIGNED ZONE. TYP. OF 4 LOCATIONS.
 - ENERGY MANAGEMENT SYSTEMS - BY "ENERGYWISE" TO CONTROL TEMPERATURE SETTINGS AT EA. OF THE 4 ZONES - BY "ENERGYWISE" CONTRACTOR. LOCATION SHALL BE COORDINATED WITH THE OWNER(S) OR REPRESENTATIVE(S).
 - TYPE-1 HOOD - GREASE RISER WITH 1" CLEARANCE TO COMBUSTIBLE PROTECTION & U.L. 762 RATED FAN. HOOD SHEETS SHALL BE PROVIDED BY OTHERS.
 - ELECTRICAL DISTRIBUTION PANELS - E.C. SHALL PROVIDE ALL INTERLOCK DEVICES TO COMPLY WITH NFPA-96 ON ALL RELATED HVAC, COOKING EQUIPMENT, ETC. COORDINATE WITH "ENERGYWISE" CONTRACTOR FOR USABLE DRY CONTACTS FOR CONTROLLING INDOOR FANS, ETC.
 - 10X10 DROP DOWN FROM EF-3 WITH A 17X17 TOP PLANGE AND END. INTERLOCK FAN WITH COMMON AREA LIGHTING. SEE M2 FOR INSTALLATION DETAILS.
 - COMBUSTION AIR FOR WATER HEATER BY PLUMBER. OFFSET TO ROOF PENETRATION TO COMPLY WITH THE 10'-0" MIN. SEPARATION FROM THE ROOF TOP OF THE WATER HEATER INTAKES.
 - UNDERCUT DOOR A MIN. OF 1" FOR RETURN AIR (125 CFM UNDER DOOR FOR RETURN)
 - REMOTE TEMPERATURE SENSORS WITH WIFI TECHNOLOGY "PROVIDED BY ENERGYWISE" CONTRACTOR. SENSORS SHALL BE RELATED TO THE "ENERGYWISE" CONTRACTOR'S SYSTEMS PANEL.

FAN SCHEDULE

TAG	MANUFACTURER	MODEL	LOCATION	AREA SERVED	CFM	STATIC PRESSURE, "WG	FAN HORSEPOWER	FAN RPM	WIRE	ELECTRICAL REQ. V/PH/Hz	ROOF OPENING	ROOF CURB	BACKDRAFT DAMPER	BIRDSCREEN	GREASE TROUGH	INTERLOCK
EF-1	COOK	100CPS-BK	ROOF	RESTROOM	885	0.75"	305	1125	1/25	208-230/1/60	22"x22"	13.5"x13.5"	YES	NO	YES	NO
EF-2	COOK	100CPS-BK	ROOF	RESTROOM	885	0.6"	250	983	1/25	208-230/1/60	22"x22"	13.5"x13.5"	YES	NO	YES	NO
EF-3	COOK	100CPS-BK	ROOF	RESTROOM	885	0.6"	250	983	1/25	208-230/1/60	22"x22"	13.5"x13.5"	YES	NO	YES	NO

DIFFUSER SCHEDULE

SYM.	SIZE	TYPE	DUCT SIZE	MODEL#	FINISH	BOOT SIZE	OPENING SIZE	QTY
A	24X24	SUPPLY 4 WAY	12"Ø	NCA12	WHITE	12"Ø	T-BAR	11
B	24X24	SUPPLY 3 WAY	12"Ø	NCA12-3	WHITE	12"Ø	T-BAR	3
C	24X24	SUPPLY 2 WAY (PARALLEL)	12"Ø	NCA12-P	WHITE	12"Ø	T-BAR	1
D	24X24	SUPPLY 4 WAY	10"Ø	NCA10	WHITE	10"Ø	T-BAR	3
E	24X24	SUPPLY 3 WAY	10"Ø	NCA10-3	WHITE	10"Ø	T-BAR	2
F	24X24	SUPPLY 2 WAY (PARALLEL)	10"Ø	NCA10-P	WHITE	10"Ø	T-BAR	1
G	24X24	SUPPLY 1 WAY W/O B.D.	6"Ø	NCA6-1	WHITE	6"Ø	T-BAR	1
H	12X12	SUPPLY 1 WAY W/O B.D.	6"Ø	RH-1	WHITE	12X12	SIZE + 1/4"	2
J	24X24	RETURN	18"Ø	RH-6	WHITE	22X22	T-BAR	4
K	24X24	RETURN	14"Ø	RH-4	WHITE	22X22	T-BAR	2
L	12X12	EXHAUST	6"Ø	RH-1	WHITE	12X12	SIZE + 1/4"	1
M	12X12	EXHAUST	6"Ø	RH-1	WHITE	12X12	SIZE + 1/4"	2

AIR BALANCE SCHEDULE

TAG	SUPPLY AIR	OUTSIDE AIR	RETURN AIR	EXHAUST AIR	BLDG. PRESSURE	% OUTSIDE AIR
RTU-1	3000 CFM	750 CFM	2250 CFM	---	+ 750 CFM	25
RTU-2	2000 CFM	500 CFM	1500 CFM	---	+ 500 CFM	25
RTU-3	2000 CFM	500 CFM	1500 CFM	---	+ 500 CFM	25
RTU-4	3000 CFM	750 CFM	2250 CFM	---	+ 750 CFM	25
EF-1	---	---	---	1200 CFM**	- 1200 CFM	---
EF-2	---	---	---	885 CFM**	- 885 CFM	---
EF-3	---	---	---	300 CFM	- 300 CFM	---
TOTAL*	10000 CFM	2500 CFM	7500 CFM	2385 CFM	+ 115 CFM	25

PACKAGE ROOFTOP UNIT SCHEDULE (RTU-1,2,3,4)

TAG	MANUFACTURER	CARRIER	RTU-1 & 4	RTU-2 & 3
RTU-1	48HC068 (7.5 TON)	48HC066 (5 TON)	---	---
RTU-2	---	---	---	---
RTU-3	---	---	---	---
RTU-4	---	---	---	---

- PLENUMIZED CURB INSTALLATION NOTES**
- CAREFULLY LOCATE AND MARK ROOF CURB LOCATIONS SO THAT DUCT WORK CAN BE INSTALLED IN THE APPROXIMATE LOCATIONS AS SHOWN BY THE FLOOR PLAN. PAY ATTENTION TO THE LOCATION OF THE ROOF STRUCTURE IN ORDER TO ACCURATELY LOCATE THE CURB.
 - MARK THE EXACT LOCATION OF EACH ROOF CURB. LAY OUT ALL EQUIPMENT LOCATIONS IN ORDER TO MAINTAIN PROPER CLEARANCES FROM EXHAUST FANS AND VENTS AS WELL AS PROVIDING FOR PROPER SERVICE CLEARANCES.
 - GENERAL CONTRACTOR SHALL CUT ROOF BELT, WATER, WIRING CAREFULLY. AVOID CUTTING ANY STRUCTURAL COMPONENTS. GENERAL CONTRACTOR SHALL ALSO INSTALL ANY NECESSARY FRAMING OR BLOCKING AT OPENINGS.
 - WITH ROOF CURB UP, MEASURE METAL BOTTOM OF CURB. MEASURE AND MARK THE LOCATION OF ANY JOISTS OR OTHER FRAMING MEMBERS THAT MUST BE AVOIDED. MEASURE AND MARK THE LOCATION OF ALL THE TAPS.
 - CUT ALL TAPS IN THE BOTTOM OF THE ROOF CURB. BE CAREFUL NOT TO DAMAGE THE ROOFING SURFACE WHILE MAKING THESE CUTS.
 - INSTALL DUCT FITTINGS AND MANUAL DAMPERS INTO THE OPENINGS PREVIOUSLY CUT. SEAL ALL CONNECTIONS ON BOTH THE BOTTOM AND THE TOP SIDES OF THE TAPS.
 - TURN CURB RIGIDLY UP. LEAVE CURB BETWEEN BOTTOM OF CURB AND DECK. INSTALL IN ROOF OPENING. SECURE CURB TO ROOF FRAMING AS REQUIRED.
 - GENERAL CONTRACTOR OR ROOFING CONTRACTOR SHALL FLASH AND ROOF IN THE CURB AS DETAILED ON THE DRAWINGS.
 - DUCT RUNS SHALL BE INSTALLED FROM THE TAPS TO THE DIFFUSER LOCATIONS AS SHOWN ON THE PLANS.
 - ELECTRICAL CONTRACTOR SHALL SEE NFPA-96 OPERATIONAL MATRIX ON M-6 SHEET FOR SHUTTING DOWN ALL MUA FROM ALL RTUs DURING AN ANSUL EVENT.
 - WRAP RIGID DUCT WORK AND DUCT TAPS WITH SPECIFIED DUCT INSULATION. SEAL AND TAPE INSULATION AROUND EACH DUCT TAP AND TO THE BOTTOM OF THE CURB.

IMPORTANT NOTE (E.C.):
ELECTRICAL CONTRACTOR SHALL SEE NFPA-96 OPERATIONAL MATRIX ON M-6 SHEET FOR SHUTTING DOWN ALL MUA FROM ALL RTUs DURING AN ANSUL EVENT.

ACCESSORIES:

- 100% ECONOMIZER W/ BAROMETRIC RELIEF WITH 25% MIN. SETTING AS SHOWN IN THE AIR BALANCE SCHEDULE FOR OPERATIONAL HOURS & DAMPER SHALL COMPLETELY SHUT DOWN DURING NIGHT SETBACK.
- NCA PLENUMIZED CURB. TO ORDER CALL TOLL-FREE (877) 530-0078.
- ONE YEAR COMPLETE PARTS AND LABOR WARRANTY.
- ADDITIONAL FOUR YEAR PARTS WARRANTY COVERING COMPRESSORS.
- SMOKE DETECTOR (SEE HVAC ROOF PLAN, SHEET M-2).
- PROVIDED MODEL #403186 MOISTURE SENSOR BY AQUA GUARD IN PRIMARY DRAIN PAN. FIELD INSTALL BY FACTORY INSTALLATION GUIDE.

NOTE: COORDINATE LOCATIONS OF RTUs WITH ROOF STRUCTURAL MEMBERS. VERIFY CONFIGURATION ON SITE PRIOR TO SETTING EQUIPMENT.
IF ADJUSTMENT IS REQUIRED MAINTAIN 10' - 0" SEPARATION BETWEEN FRESH AIR INTAKES AND EXHAUST FANS.

- GENERAL CONTRACTOR**
- IT IS THE RESPONSIBILITY OF THE GENERAL CONTRACTOR TO RECEIVE, OFFLOAD, AND STORE ALL HVAC MATERIALS WHICH ARRIVE AT THE JOB SITE. HOODS MUST BE STORED IN THE KITCHEN.
 - IT IS VERY IMPORTANT THAT ACCURATE MEASUREMENTS ARE USED WHEN LOCATING EXHAUST FAN ROOF OPENING TO ENSURE THAT NO OFFSETS ARE REQUIRED IN THE EXHAUST DUCTWORK FROM THE KITCHEN HOOD. COORDINATE ROOF OPENINGS WITH THE KITCHEN EQUIPMENT PLAN AND EXHAUST HOOD PLANS. OBTAIN THE CORRECT PLANS FROM THE KITCHEN EQUIPMENT SUPPLIER.
 - RTU ROOF OPENING SIZES AND ROOF CURBS ARE BASED ON EQUIPMENT SHOWN. IF OTHER EQUIPMENT IS USED, VERIFY ROOF OPENING REQUIREMENTS. MAKE PENETRATION AS NEEDED FOR INSTALLATION OF NEW CURB AND RTU. COORDINATE ON SITE WITH HVAC CONTRACTOR. ENSURE THAT ROOFING MATERIAL DOES NOT COVER THE TOP OF ANY HVAC EQUIPMENT CURB.
 - ANY FRAMING REQUIRED FOR HVAC WORK SHALL BE BY THE GENERAL CONTRACTOR.
 - GENERAL CONTRACTOR IS TO PROVIDE ANY SCREENING, GUARD RAILS, ETC. FOR ROOF-MOUNTED HVAC EQUIPMENT PER IBC OR LOCAL CODE.
 - ANY EXPOSED HVAC WORK IN THE DINING ROOM IS TO BE PRIMED AND PAINTED BY THE GENERAL CONTRACTOR.
 - GENERAL CONTRACTOR IS TO ENSURE THAT THE ROOF TRUSSES CLOSEST TO THE EXHAUST RISERS FOR THE HOODS ARE SPACED 28" CENTER TO CENTER SO THAT THE EXHAUST STACKS - WHICH BY DESIGN CANNOT BE OFFSET - WILL BE INSTALLED PLUMB. CONFIRM ON SITE WITH HVAC CONTRACTOR AND MOST-RECENT KITCHEN EQUIPMENT/HOOD PLANS.

- ELECTRICAL CONTRACTOR**
- THE ELECTRICAL CONTRACTOR SHALL PROVIDE ALL HIGH VOLTAGE POWER TO ALL HVAC EQUIPMENT & PROVIDE CONDUIT FOR CONTROL WIRING TO ROOF SIDE FROM THE INTERIOR NEUTRAL TO HIGH VOLTAGE CONDUIT. LOW & HIGH VOLTAGE WIRING MAY NOT BE IN THE SAME CONDUIT. WIRING MAY NOT ENTER OR EXIT CURB AT ANY POINT. ALL WIRING SHALL ENTER ROOF TOP UNIT AT ROOF SIDE OF RTU'S. ROOF PENETRATIONS FOR WIRING CONDUIT SHALL BE A MIN. OF 12" FROM ANY SIDE OF CURB.
 - FOR EACH UNIT, THE ELECTRICAL CONTRACTOR SHALL PROVIDE ONE SINGLE-GANG RECEPTACLE FOR THE T-STAT, AND ONE DOUBLE-GANG RECEPTACLE TEST STATION FOR THE ANNUNCIATOR(S), WITH GREEN AND RED LIGHT ADVISORY LENSES. THE FIRE AND MECHANICAL INSPECTORS SHALL DETERMINE SUITABLE LOCATIONS FOR ALARMS, ANNUNCIATORS AND TEST STATION SHALL BE LOOPED IN THE CIRCUITRY OF THE SMOKE DETECTION DEVICES. ELECTRICIAN SHALL PROVIDE SINGLE-DOUBLE GANG BOXES & WALL CONDUIT AT SPECIFIED LOCATIONS FOR ALL LOW VOLTAGE COMPONENTS FOR CHASING LOW VOLTAGE WIRE FOR ALL WALL MOUNTED LOW VOLTAGE COMPONENTS - CONSULT HVAC CONTRACTOR FOR LOCATIONS & DESCRIPTION.
 - AS PER THE OWNER, THE ELECTRICAL CONTRACTOR SHALL PROVIDE ALL INTERLOCKING DEVICES REQUIRED BETWEEN THE HOODED APPLIANCES, ANSUL, GAS MECHANICAL VALVE & HVAC TO COMPLY WITH NFPA-96. "ENERGYWISE" ENERGY MANAGEMENTS SYSTEM SHALL WORK IN CONJUNCTION, WITH COMPLIANCE TO NFPA-96 DURING AN ANSUL EVENT.
 - THE ELECTRICAL CONTRACTOR SHALL FURNISH AND INSTALL DISCONNECTS FOR ALL HVAC EQUIPMENT.

- PLUMBING CONTRACTOR**
- THE PLUMBING CONTRACTOR PROVIDE CONDENSATE DRAINS DOWNSTREAM OF ROOF TOP A/C UNITS, SUPPORT & TERMINATE AS PER LOCAL CODE.
 - PLUMBING CONTRACTOR SHALL PROVIDE NAT. GAS SUPPLY TO RTUs, WATER HEATER COMBUSTION AIR VENTILATION & COORDINATE ANY ROOF PENETRATIONS AND OFFSET(S) FOR THE 10'-0" HORIZONTAL SEPARATION CLEARANCE.

UPON COMMENCEMENT OF ROUGH-IN AS SCHEDULED BY NCA CONSULTANTS, THE AIR CONDITIONING CONTRACTOR IS TO REMAIN ON THE JOB SITE FULL TIME UNTIL THE ROUGH-IN IS 100% COMPLETE. THE GENERAL CONTRACTOR'S SITE SUPERINTENDENT WILL VERIFY.
UPON COMMENCEMENT OF TRIM-OUT AS SCHEDULED BY NCA CONSULTANTS, THE AIR CONDITIONING CONTRACTOR IS TO REMAIN ON THE JOB SITE FULL TIME UNTIL THE TRIM-OUT IS 100% COMPLETE. THE GENERAL CONTRACTOR'S SITE SUPERINTENDENT WILL VERIFY.

© Copyright 2018- Drawings, specifications, notes, database, computer files, field data, and reports as instruments of service prepared by the Design of Record. As instruments of services, these items remain the property of the Design of Record, who shall retain all statutory and other reserved rights, including the copyright thereto. Any use, reproduction or changes to these documents without written consent of NCA Consultants is a violation of federal copyright laws.

PREMIER KINGS, INC.
5628 CARWHAEL ROAD
MONTGOMERY, ALABAMA 36117
PHONE: (205) 320-1728
www.pkiusa.com

2124 Morris Avenue
Birmingham, AL 35203
Premier King
Phone: (205) 320-1728
email: info@pkiusa.com
www.pkiusa.com

PROJECT # 18026-18
BCC-80 30 20 W/ACE - APRIL 2015 DESIGN RELEASE
BURGER KING RESTAURANT
SHORTER, AL
HVAC FLOOR PLAN, NOTES & SCHEDULES

DRAWN BY: MW
NO. DATE: 107/15/18
CHECKED BY: JAC
NO. DATE: 107/15/18
RELEASED FOR CONSTRUCTION BY: JAC

ARCHITECTS, PC
interior design
planning

ORDER Plans

M 1