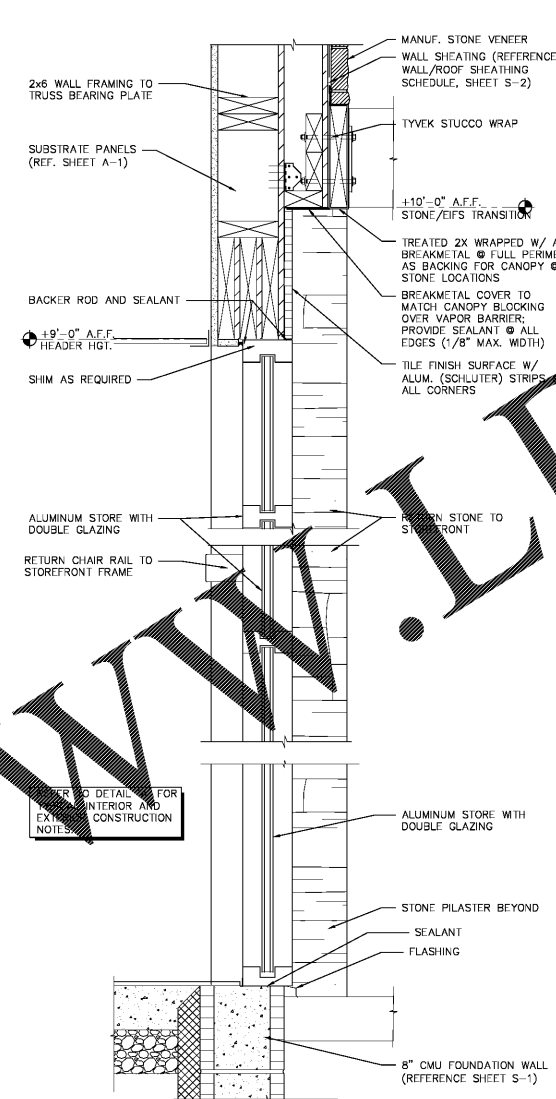
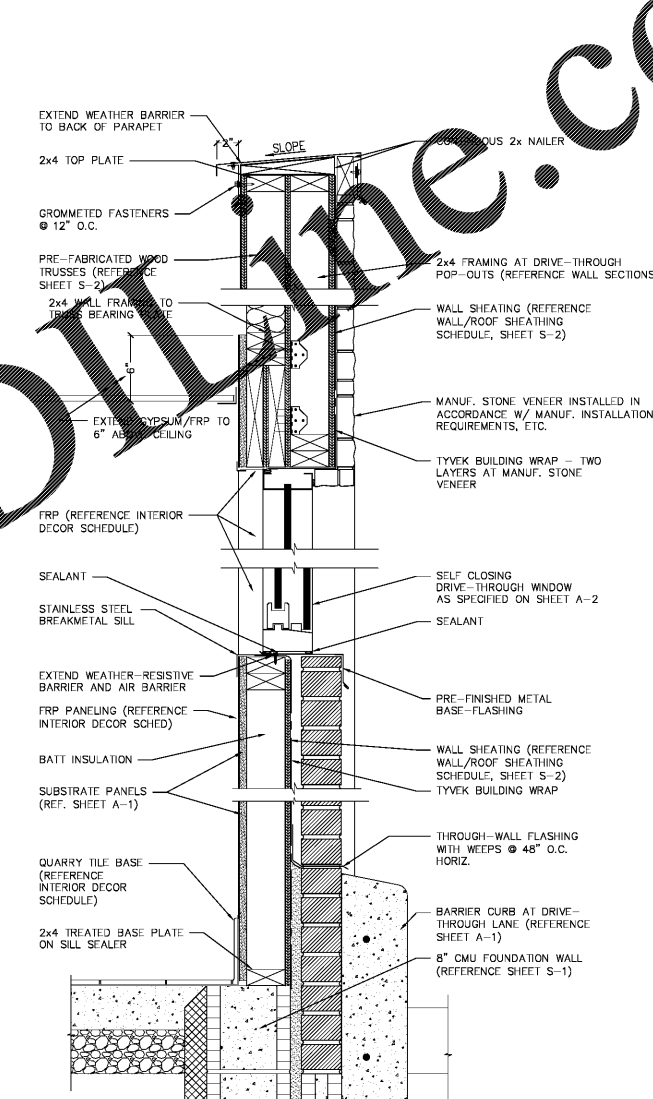


A 2x4 BRICK / E.I.F.S. WALL DETAIL
SCALE: 3\"/>

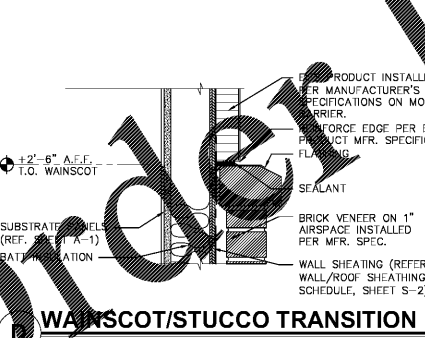


B EIFS / STONE TOWER WALL DETAIL
SCALE: 3\"/>

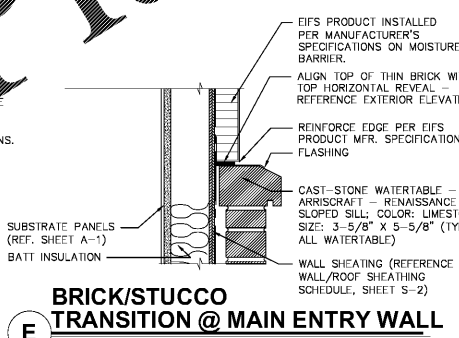


C 2x4 DRIVE-THROUGH WINDOW WALL DETAIL
SCALE: 3\"/>

F ROOFTOP FLAG-POLE DETAIL
SCALE: 1 1/2\"/>



D WAINSCOT/STUCCO TRANSITION
SCALE: 1 1/2\"/>



E BRICK/STUCCO TRANSITION @ MAIN ENTRY WALL
SCALE: 1 1/2\"/>

NOTE: G.C. TO PROVIDE TWO FLAG POLES @ EA. CORNER OF THE ENTRY AND FRONT TOWERS

Order Plans

DATE: 11/06/18
NO. DATE: 11/06/18
DRAWN BY: MW
CHECKED BY: JASON
RELEASED FOR CONSTRUCTION: BD

BURGER KING
PREMIER KINGS, INC.
5529 CARMICHAEL ROAD
MONTOMOERY, ALABAMA 36117
PHONE: (205) 322-1778
EMAIL: info@bplphba.com
WWW.BPLPHBA.COM

2126 Monts Avenue, 903
Phone: (205) 322-1751
Fax: (205) 322-1778
email: info@hplha.com
www.hplha.com
hendon huckestein architects, PC
architecture • planning • interior design

STATE OF ALABAMA
Professional Seal
4152
ERIK N. HENDON
REGISTERED ARCHITECT

PROJECT #1802618
ROC-60 20/20 WAIVER: APRIL 2015 DESIGN RELEASE
BURGER KING RESTAURANT
SHORTER, AL
CONSTRUCTION DETAILS (ENHANCED)