

Order Online.com

SHEET NUMBER: 50

SHEET TITLE: UTILITY PLAN

DATE: 4-8-18

CHECKED BY: C. J. [Signature]

DESIGNED BY: [Signature]

PROPOSED BK & POPEYES FOR PREMIER KINGS COMPANIES

SHORTER, ALABAMA

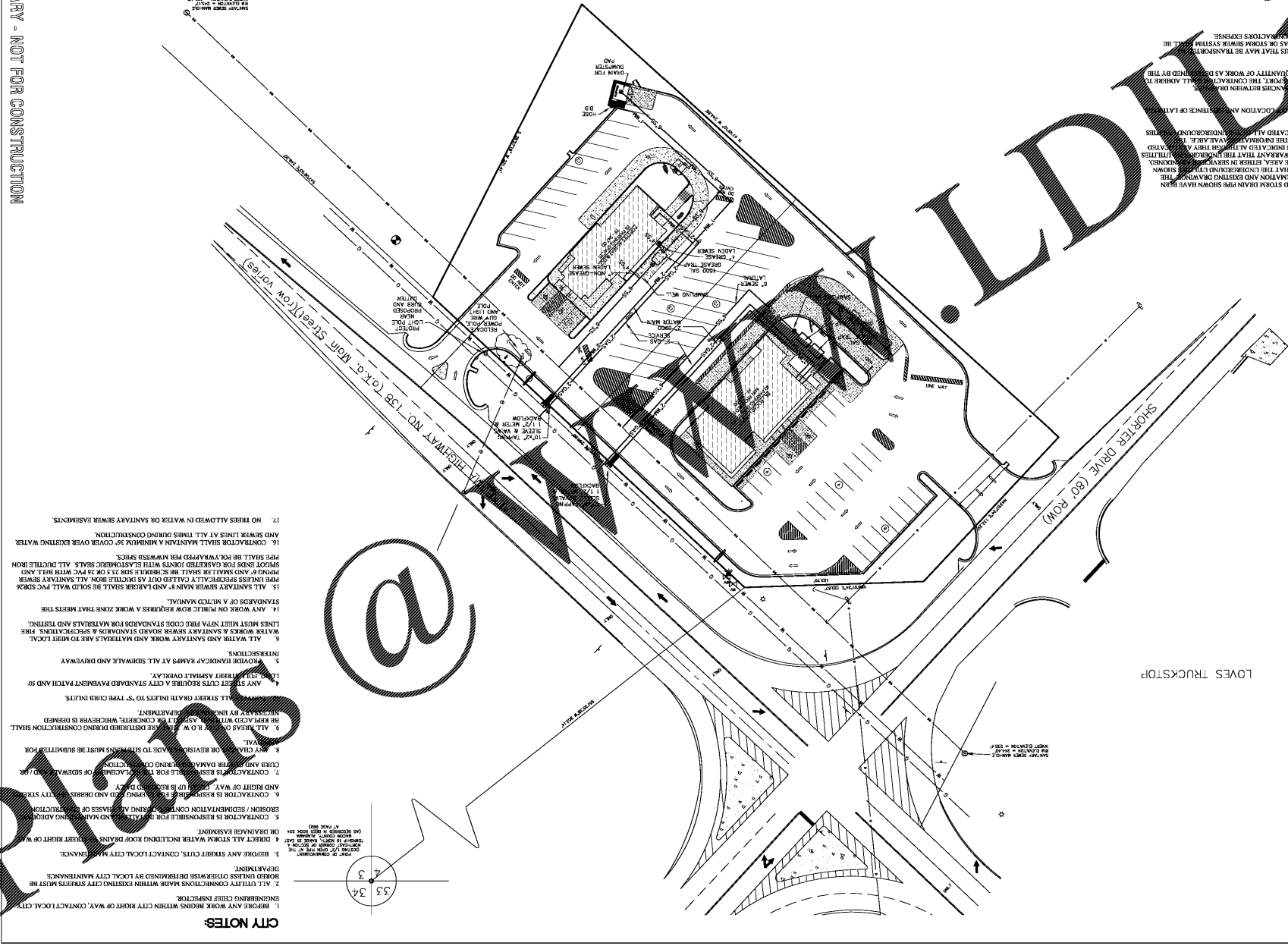
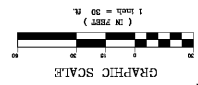
ENGINEERING, L.L.C.

REGISTERED PROFESSIONAL ENGINEER

REGISTERED PROFESSIONAL SURVEYOR

NO. 303-20048, WASHINGTON, AL 36813

PRELIMINARY - NOT FOR CONSTRUCTION



PROJECT NOTES

1. BEFORE ANY WORK BEGINS WITHIN CITY RIGHT OF WAY, CONTACT LOCAL CITY ENGINEERING OFFICE FOR PERMITS.
2. ALL UTILITY CONNECTIONS MADE WITHIN EXISTING CITY STREETS MUST BE MADE UNDER EXISTING SURFACE DETERMINED BY LOCAL CITY MAINTENANCE DEPARTMENT.
3. BEFORE ANY STREET CUTS, CONTACT LOCAL CITY MAINTENANCE DEPARTMENT.
4. DIRECT ALL STORM WATER INCLUDING ROOF DRAINS TO STREET RIGHT OF WAY OR DRAINAGE BASIN.
5. CONTRACTOR IS RESPONSIBLE FOR OBTAINING ALL NECESSARY PERMITS AND ADHERING TO ALL CITY ORDINANCES AND REGULATIONS.
6. CONTRACTOR IS RESPONSIBLE FOR OBTAINING ALL NECESSARY PERMITS AND ADHERING TO ALL CITY ORDINANCES AND REGULATIONS.
7. CONTRACTOR IS RESPONSIBLE FOR OBTAINING ALL NECESSARY PERMITS AND ADHERING TO ALL CITY ORDINANCES AND REGULATIONS.
8. ANY CHANGES OR REVISIONS MADE TO THIS PLAN MUST BE SUBMITTED FOR REVIEW AND APPROVAL BY THE ENGINEER.
9. ALL UTILITY CONNECTIONS MUST BE MADE IN ACCORDANCE WITH THE CITY ENGINEERING DEPARTMENT.
10. ALL STREET LIGHTS MUST BE TO THE CITY ENGINEERING DEPARTMENT.
11. ALL STREET LIGHTS MUST BE TO THE CITY ENGINEERING DEPARTMENT.
12. ALL STREET LIGHTS MUST BE TO THE CITY ENGINEERING DEPARTMENT.
13. ALL STREET LIGHTS MUST BE TO THE CITY ENGINEERING DEPARTMENT.
14. ALL STREET LIGHTS MUST BE TO THE CITY ENGINEERING DEPARTMENT.
15. ALL STREET LIGHTS MUST BE TO THE CITY ENGINEERING DEPARTMENT.
16. ALL STREET LIGHTS MUST BE TO THE CITY ENGINEERING DEPARTMENT.
17. NO TRAILS ALLOWED IN WATER OR SANITARY SEWER BASINMENTS AND SEWER LINES AT ALL TIMES DURING CONSTRUCTION.
18. CONTRACTOR SHALL MAINTAIN A MINIMUM 30' COVER OVER EXISTING WATER MAINS AND SANITARY SEWERS.
19. ALL SANITARY SEWER MAINS 8" AND LARGER SHALL BE SOLID WALL PVC SDR 35 PIPE AND SHALL BE INSTALLED WITH 2' OR 2.5' COVER OVER EXISTING WATER MAINS AND SANITARY SEWERS.
20. ALL SANITARY SEWER MAINS 8" AND LARGER SHALL BE INSTALLED WITH 2' OR 2.5' COVER OVER EXISTING WATER MAINS AND SANITARY SEWERS.
21. ALL SANITARY SEWER MAINS 8" AND LARGER SHALL BE INSTALLED WITH 2' OR 2.5' COVER OVER EXISTING WATER MAINS AND SANITARY SEWERS.
22. ALL SANITARY SEWER MAINS 8" AND LARGER SHALL BE INSTALLED WITH 2' OR 2.5' COVER OVER EXISTING WATER MAINS AND SANITARY SEWERS.
23. ALL SANITARY SEWER MAINS 8" AND LARGER SHALL BE INSTALLED WITH 2' OR 2.5' COVER OVER EXISTING WATER MAINS AND SANITARY SEWERS.
24. ALL SANITARY SEWER MAINS 8" AND LARGER SHALL BE INSTALLED WITH 2' OR 2.5' COVER OVER EXISTING WATER MAINS AND SANITARY SEWERS.
25. ALL SANITARY SEWER MAINS 8" AND LARGER SHALL BE INSTALLED WITH 2' OR 2.5' COVER OVER EXISTING WATER MAINS AND SANITARY SEWERS.