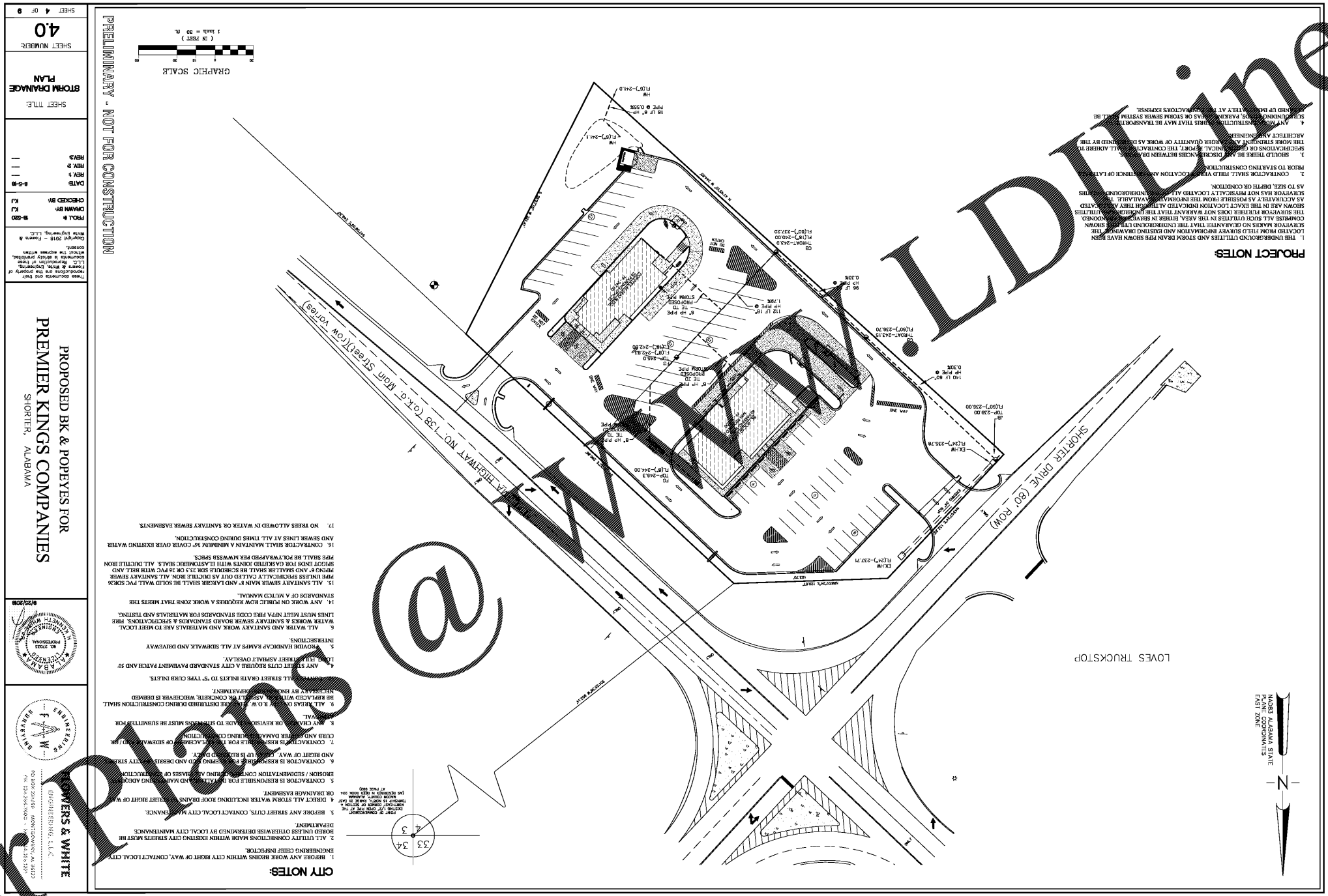


Order Online.com

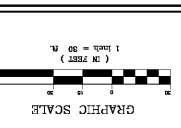


**PROPOSED BK & POPEYES FOR PREMIER KINGS COMPANIES**  
SHELTER, ALABAMA

**ENGINEERS & WHITE**  
ENGINEERING, L.L.C.  
4130 201st Ave. SE  
Birmingham, AL 35235  
205.333.3333

DATE	4-18-18
CHECKED BY	CL
DESIGNED BY	CL
PROJECT	Storm Drainage
DRAWN BY	CL
SCALE	AS SHOWN
SHEET TITLE	STORM DRAINAGE PLAN
SHEET NUMBER	40
SHEET OF	8

PRELIMINARY - NOT FOR CONSTRUCTION



**PROJECT NOTES**

1. THE UNDERGROUND UTILITY AND STORM DRAIN SYSTEMS SHALL BE INSTALLED AND TESTED PRIOR TO STARTING CONSTRUCTION.
2. CONSTRUCTION SHALL BE IN ACCORDANCE WITH THE CITY SPECIFICATIONS AND ANY OTHER REQUIREMENTS OF LOCAL, STATE AND FEDERAL AGENCIES.
3. THE CONTRACTOR SHALL BE RESPONSIBLE FOR OBTAINING ALL NECESSARY PERMITS AND APPROVALS FROM THE CITY AND STATE AGENCIES.
4. ALL CITY CONNECTIONS MADE WITHIN EXISTING CITY STREETS MUST BE MADE UNDER EXISTING SURFACE DETERMINED BY LOCAL CITY MAINTENANCE DEPARTMENT.
5. CONTRACTOR IS RESPONSIBLE FOR PROTECTING ALL EXISTING UTILITY LINES AND RIGHT OF WAY, INCLUDING ANY EXISTING EROSION CONTROL MEASURES.
6. CONTRACTOR IS RESPONSIBLE FOR PROTECTING ALL EXISTING UTILITY LINES AND RIGHT OF WAY, INCLUDING ANY EXISTING EROSION CONTROL MEASURES.
7. CONTRACTOR SHALL BE RESPONSIBLE FOR PROTECTING ALL EXISTING UTILITY LINES AND RIGHT OF WAY, INCLUDING ANY EXISTING EROSION CONTROL MEASURES.
8. ANY CHANGES OR REVISIONS TO THIS PLAN MUST BE SUBMITTED FOR APPROVAL BY THE ENGINEER BEFORE CONSTRUCTION.
9. ALL REVISIONS TO THIS PLAN MUST BE SUBMITTED FOR APPROVAL BY THE ENGINEER BEFORE CONSTRUCTION.
10. ALL REVISIONS TO THIS PLAN MUST BE SUBMITTED FOR APPROVAL BY THE ENGINEER BEFORE CONSTRUCTION.
11. ALL REVISIONS TO THIS PLAN MUST BE SUBMITTED FOR APPROVAL BY THE ENGINEER BEFORE CONSTRUCTION.
12. ALL REVISIONS TO THIS PLAN MUST BE SUBMITTED FOR APPROVAL BY THE ENGINEER BEFORE CONSTRUCTION.
13. ALL REVISIONS TO THIS PLAN MUST BE SUBMITTED FOR APPROVAL BY THE ENGINEER BEFORE CONSTRUCTION.
14. ALL REVISIONS TO THIS PLAN MUST BE SUBMITTED FOR APPROVAL BY THE ENGINEER BEFORE CONSTRUCTION.
15. ALL REVISIONS TO THIS PLAN MUST BE SUBMITTED FOR APPROVAL BY THE ENGINEER BEFORE CONSTRUCTION.
16. ALL REVISIONS TO THIS PLAN MUST BE SUBMITTED FOR APPROVAL BY THE ENGINEER BEFORE CONSTRUCTION.
17. ALL REVISIONS TO THIS PLAN MUST BE SUBMITTED FOR APPROVAL BY THE ENGINEER BEFORE CONSTRUCTION.
18. ALL REVISIONS TO THIS PLAN MUST BE SUBMITTED FOR APPROVAL BY THE ENGINEER BEFORE CONSTRUCTION.
19. ALL REVISIONS TO THIS PLAN MUST BE SUBMITTED FOR APPROVAL BY THE ENGINEER BEFORE CONSTRUCTION.
20. ALL REVISIONS TO THIS PLAN MUST BE SUBMITTED FOR APPROVAL BY THE ENGINEER BEFORE CONSTRUCTION.

**CITY NOTES:**

1. REGRADE ANY STREET CUTS, CONTACT LOCAL CITY MAINTENANCE DEPARTMENT.
2. ALL CITY CONNECTIONS MADE WITHIN EXISTING CITY STREETS MUST BE MADE UNDER EXISTING SURFACE DETERMINED BY LOCAL CITY MAINTENANCE DEPARTMENT.
3. REGRADE ANY STREET CUTS, CONTACT LOCAL CITY MAINTENANCE DEPARTMENT.
4. DIRECT ALL STORM WATER INCLUDING ROOF DRAINS TO EXISTING RIGHT OF WAY OR DRAINAGE BASIN.
5. CONTRACTOR IS RESPONSIBLE FOR INSTALLING AND MAINTAINING ADEQUATE EROSION/SEDIMENTATION CONTROL MEASURES TO PREVENT SOIL EROSION AND DEBRIS FROM ENTERING STREETS, DRAINAGE CANALS, OR NEARBY PROPERTY.
6. CONTRACTOR IS RESPONSIBLE FOR PROTECTING ALL EXISTING UTILITY LINES AND RIGHT OF WAY, INCLUDING ANY EXISTING EROSION CONTROL MEASURES.
7. CONTRACTOR SHALL BE RESPONSIBLE FOR PROTECTING ALL EXISTING UTILITY LINES AND RIGHT OF WAY, INCLUDING ANY EXISTING EROSION CONTROL MEASURES.
8. ANY CHANGES OR REVISIONS TO THIS PLAN MUST BE SUBMITTED FOR APPROVAL BY THE ENGINEER BEFORE CONSTRUCTION.
9. ALL REVISIONS TO THIS PLAN MUST BE SUBMITTED FOR APPROVAL BY THE ENGINEER BEFORE CONSTRUCTION.
10. ALL REVISIONS TO THIS PLAN MUST BE SUBMITTED FOR APPROVAL BY THE ENGINEER BEFORE CONSTRUCTION.
11. ALL REVISIONS TO THIS PLAN MUST BE SUBMITTED FOR APPROVAL BY THE ENGINEER BEFORE CONSTRUCTION.
12. ALL REVISIONS TO THIS PLAN MUST BE SUBMITTED FOR APPROVAL BY THE ENGINEER BEFORE CONSTRUCTION.
13. ALL REVISIONS TO THIS PLAN MUST BE SUBMITTED FOR APPROVAL BY THE ENGINEER BEFORE CONSTRUCTION.
14. ALL REVISIONS TO THIS PLAN MUST BE SUBMITTED FOR APPROVAL BY THE ENGINEER BEFORE CONSTRUCTION.
15. ALL REVISIONS TO THIS PLAN MUST BE SUBMITTED FOR APPROVAL BY THE ENGINEER BEFORE CONSTRUCTION.
16. ALL REVISIONS TO THIS PLAN MUST BE SUBMITTED FOR APPROVAL BY THE ENGINEER BEFORE CONSTRUCTION.
17. ALL REVISIONS TO THIS PLAN MUST BE SUBMITTED FOR APPROVAL BY THE ENGINEER BEFORE CONSTRUCTION.
18. ALL REVISIONS TO THIS PLAN MUST BE SUBMITTED FOR APPROVAL BY THE ENGINEER BEFORE CONSTRUCTION.
19. ALL REVISIONS TO THIS PLAN MUST BE SUBMITTED FOR APPROVAL BY THE ENGINEER BEFORE CONSTRUCTION.
20. ALL REVISIONS TO THIS PLAN MUST BE SUBMITTED FOR APPROVAL BY THE ENGINEER BEFORE CONSTRUCTION.