

Order Online.com

PROPOSED BK & POPEYES FOR
PREMIER KINGS COMPANIES
SHORTER, ALABAMA

DATE: 11-11-20
CHECKED BY: C.L.
DESIGNED BY: C.L.
SCALE: 1" = 20'

PROJECT: 20
SHEET NUMBER: 2 OF 8

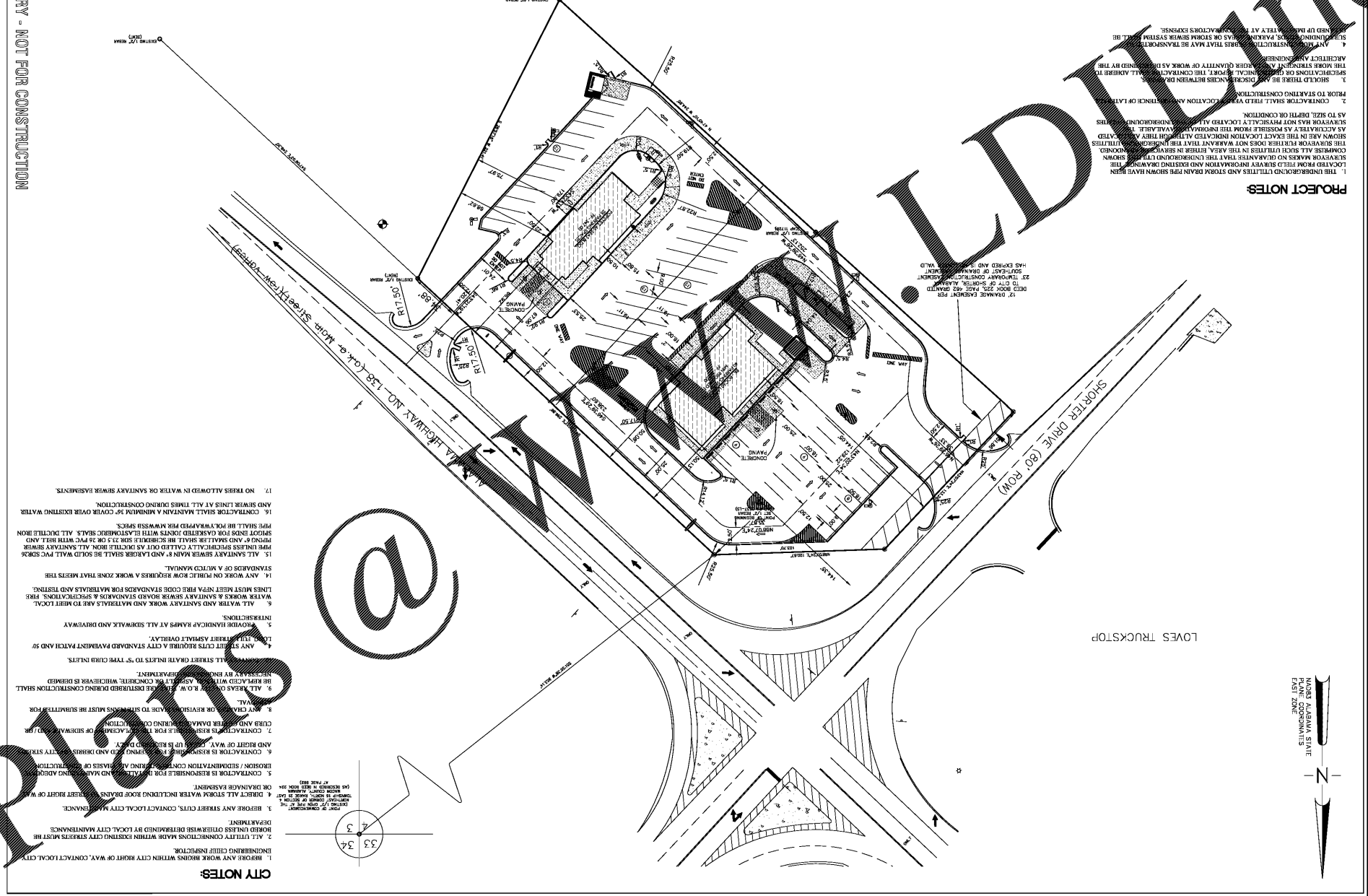
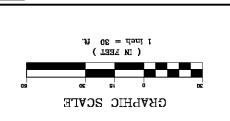
DATE: 11-11-20
CHECKED BY: C.L.
DESIGNED BY: C.L.

DATE: 11-11-20
CHECKED BY: C.L.
DESIGNED BY: C.L.

DATE: 11-11-20
CHECKED BY: C.L.
DESIGNED BY: C.L.

DATE: 11-11-20
CHECKED BY: C.L.
DESIGNED BY: C.L.

PRELIMINARY - NOT FOR CONSTRUCTION

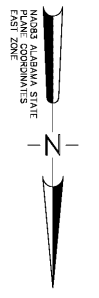


CITY NOTES:

1. BEFORE ANY WORK BEGINS WITHIN CITY RIGHT OF WAY, CONTACT LOCAL CITY ENGINEERING DEPARTMENT.
2. ALL UTILITY CONNECTIONS MADE WITHIN EXISTING CITY STREETS MUST BE MADE UNDER CLOSE SUPERVISION BY LOCAL CITY MAINTENANCE DEPARTMENT.
3. BEFORE ANY STREET CUTS, CONTACT LOCAL CITY MAINTENANCE DEPARTMENT.
4. DIRECT ALL STORM WATER INCLUDING ROOF DRAINAGE TO EXISTING OR NEW DRAINAGE FACILITIES.
5. CONTRACTOR IS RESPONSIBLE FOR OBTAINING ALL NECESSARY PERMITS AND EROSION/SEDIMENTATION CONTROL MEASURES OR OTHER NECESSARY MEASURES TO PREVENT EROSION AND DAMAGE TO ADJACENT PROPERTY AND RIGHT OF WAY.
6. CONTRACTOR IS RESPONSIBLE FOR OBTAINING ALL NECESSARY PERMITS AND EROSION/SEDIMENTATION CONTROL MEASURES OR OTHER NECESSARY MEASURES TO PREVENT EROSION AND DAMAGE TO ADJACENT PROPERTY AND RIGHT OF WAY.
7. CONTRACTOR IS RESPONSIBLE FOR OBTAINING ALL NECESSARY PERMITS AND EROSION/SEDIMENTATION CONTROL MEASURES OR OTHER NECESSARY MEASURES TO PREVENT EROSION AND DAMAGE TO ADJACENT PROPERTY AND RIGHT OF WAY.
8. ANY CHANGES OR REVISIONS TO THIS PLAN MUST BE SUBMITTED FOR REVIEW AND APPROVAL BY THE CITY ENGINEER.
9. ALL REVISIONS TO THIS PLAN MUST BE SUBMITTED FOR REVIEW AND APPROVAL BY THE CITY ENGINEER.
10. ALL STREET LIGHTS MUST BE TO THE CITY ENGINEER'S SATISFACTION.
11. ALL STREET LIGHTS MUST BE TO THE CITY ENGINEER'S SATISFACTION.
12. ALL STREET LIGHTS MUST BE TO THE CITY ENGINEER'S SATISFACTION.
13. ALL STREET LIGHTS MUST BE TO THE CITY ENGINEER'S SATISFACTION.
14. ALL STREET LIGHTS MUST BE TO THE CITY ENGINEER'S SATISFACTION.
15. ALL STREET LIGHTS MUST BE TO THE CITY ENGINEER'S SATISFACTION.
16. ALL STREET LIGHTS MUST BE TO THE CITY ENGINEER'S SATISFACTION.
17. NO TRAFFIC ALLOWED IN WATER OR SANITARY SEWER BASINMENTS AND SERVICE LINES AT ALL TIMES DURING CONSTRUCTION.

PROJECT NOTES:

1. THE UNDERGROUND UTILITIES AND FROM DRAWING SHALL BE LOCATED FROM FIELD SURVEY INFORMATION AND EXISTING DRAWINGS. THE CONTRACTOR SHALL VERIFY THE LOCATION AND DEPTH OF UTILITIES PRIOR TO STARTING CONSTRUCTION.
2. CONTRACTOR SHALL VERIFY THE LOCATION AND DEPTH OF UTILITIES AS TO BEIL, DEPTH OR CONDITION.
3. CONTRACTOR SHALL VERIFY THE LOCATION AND DEPTH OF UTILITIES AS TO BEIL, DEPTH OR CONDITION.
4. CONTRACTOR SHALL VERIFY THE LOCATION AND DEPTH OF UTILITIES AS TO BEIL, DEPTH OR CONDITION.
5. CONTRACTOR SHALL VERIFY THE LOCATION AND DEPTH OF UTILITIES AS TO BEIL, DEPTH OR CONDITION.
6. CONTRACTOR SHALL VERIFY THE LOCATION AND DEPTH OF UTILITIES AS TO BEIL, DEPTH OR CONDITION.
7. CONTRACTOR SHALL VERIFY THE LOCATION AND DEPTH OF UTILITIES AS TO BEIL, DEPTH OR CONDITION.
8. CONTRACTOR SHALL VERIFY THE LOCATION AND DEPTH OF UTILITIES AS TO BEIL, DEPTH OR CONDITION.
9. CONTRACTOR SHALL VERIFY THE LOCATION AND DEPTH OF UTILITIES AS TO BEIL, DEPTH OR CONDITION.
10. CONTRACTOR SHALL VERIFY THE LOCATION AND DEPTH OF UTILITIES AS TO BEIL, DEPTH OR CONDITION.
11. CONTRACTOR SHALL VERIFY THE LOCATION AND DEPTH OF UTILITIES AS TO BEIL, DEPTH OR CONDITION.
12. CONTRACTOR SHALL VERIFY THE LOCATION AND DEPTH OF UTILITIES AS TO BEIL, DEPTH OR CONDITION.
13. CONTRACTOR SHALL VERIFY THE LOCATION AND DEPTH OF UTILITIES AS TO BEIL, DEPTH OR CONDITION.
14. CONTRACTOR SHALL VERIFY THE LOCATION AND DEPTH OF UTILITIES AS TO BEIL, DEPTH OR CONDITION.
15. CONTRACTOR SHALL VERIFY THE LOCATION AND DEPTH OF UTILITIES AS TO BEIL, DEPTH OR CONDITION.
16. CONTRACTOR SHALL VERIFY THE LOCATION AND DEPTH OF UTILITIES AS TO BEIL, DEPTH OR CONDITION.
17. CONTRACTOR SHALL VERIFY THE LOCATION AND DEPTH OF UTILITIES AS TO BEIL, DEPTH OR CONDITION.
18. CONTRACTOR SHALL VERIFY THE LOCATION AND DEPTH OF UTILITIES AS TO BEIL, DEPTH OR CONDITION.
19. CONTRACTOR SHALL VERIFY THE LOCATION AND DEPTH OF UTILITIES AS TO BEIL, DEPTH OR CONDITION.
20. CONTRACTOR SHALL VERIFY THE LOCATION AND DEPTH OF UTILITIES AS TO BEIL, DEPTH OR CONDITION.



33
34