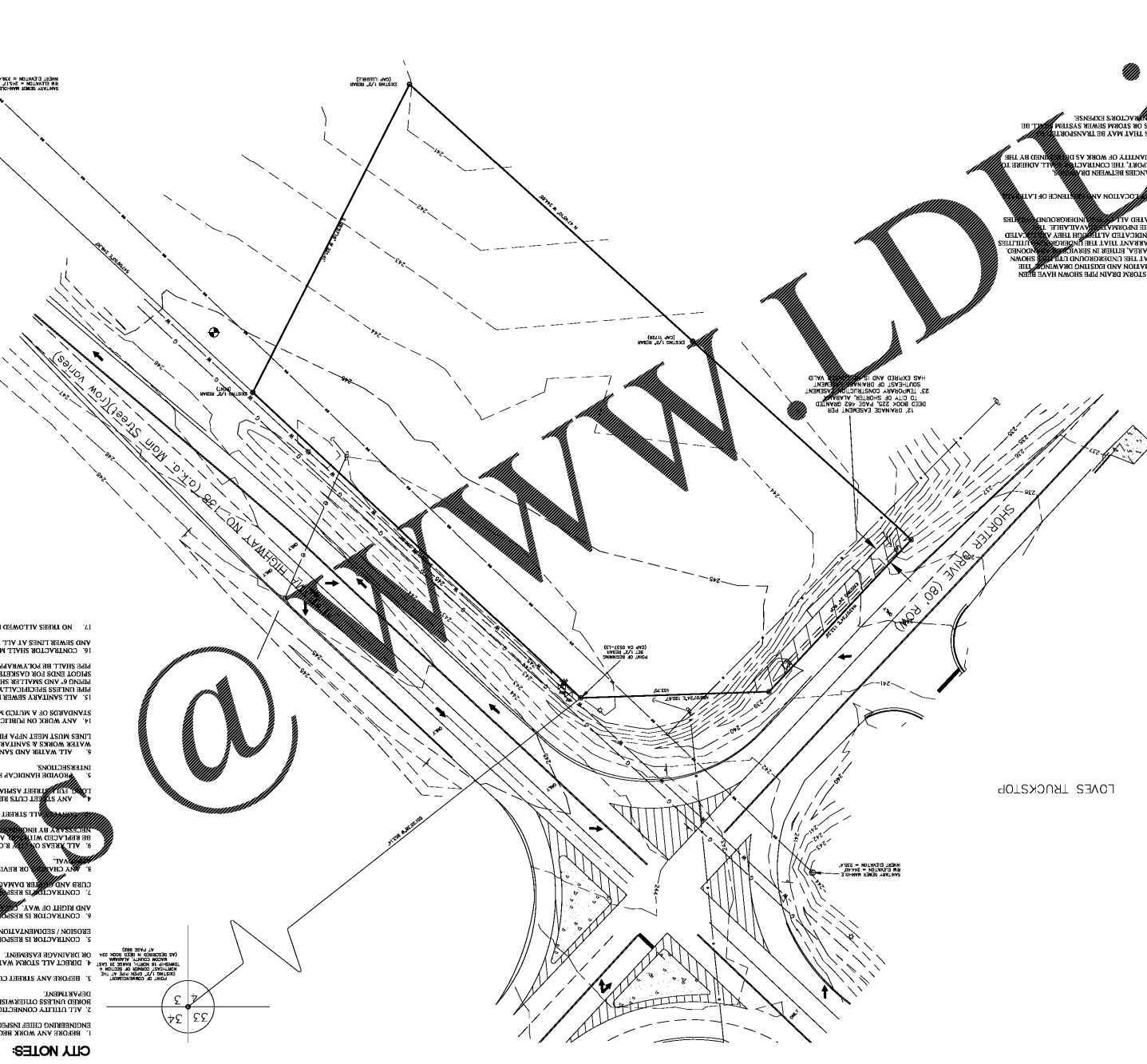
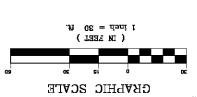


Order Online.com

PRELIMINARY - NOT FOR CONSTRUCTION

CITY NOTES:
1. BEFORE ANY WORK BEGINS WITHIN CITY RIGHT OF WAY, CONTRACT LOCAL CITY ENGINEERING DEPARTMENT.
2. ALL UTILITY CONNECTIONS MADE WITHIN EXISTING CITY STREETS MUST BE MADE UNDER CLOSE SUPERVISION DETERMINED BY LOCAL CITY MAINTENANCE DEPARTMENT.
3. BEFORE ANY STREET CUTS, CONTACT LOCAL CITY MAINTENANCE DEPARTMENT.
4. DIRECT ALL STORM WATER INCLUDING ROOF DRAINS TO STREET RIGHT OF WAY OR DRAINAGE BASIN.
5. CONTRACTOR IS RESPONSIBLE FOR INSTALLING AND MAINTAINING ADEQUATE EROSION/SEDIMENTATION CONTROL MEASURES ON ALL EXPOSED AREAS AND RIGHT OF WAY.
6. CONTRACTOR IS RESPONSIBLE FOR PROTECTING EXISTING UTILITIES, TREE TRUNKS AND OTHER DAMAGE DURING CONSTRUCTION.
7. CONTRACTOR SHALL BE RESPONSIBLE FOR OBTAINING NECESSARY PERMITS AND RIGHT OF WAY.
8. ANY CHANGES OR REVISIONS MADE TO THIS PLAN MUST BE SUBMITTED FOR REVIEW AND APPROVAL BY THE CITY ENGINEER.
9. ALL REASONS FOR REVISIONS MUST BE CLEARLY EXPLAINED AND APPROVED BY THE CITY ENGINEER.
10. ALL STREET LIGHTS MUST BE TO THE CITY ENGINEER'S SATISFACTION.
11. ALL STREET LIGHTS MUST BE TO THE CITY ENGINEER'S SATISFACTION.
12. ALL STREET LIGHTS MUST BE TO THE CITY ENGINEER'S SATISFACTION.
13. ALL STREET LIGHTS MUST BE TO THE CITY ENGINEER'S SATISFACTION.
14. ALL STREET LIGHTS MUST BE TO THE CITY ENGINEER'S SATISFACTION.
15. ALL STREET LIGHTS MUST BE TO THE CITY ENGINEER'S SATISFACTION.
16. ALL STREET LIGHTS MUST BE TO THE CITY ENGINEER'S SATISFACTION.
17. ALL STREET LIGHTS MUST BE TO THE CITY ENGINEER'S SATISFACTION.



PROJECT NOTES

- 1. THE UNDERGROUND UTILITIES AND FROM DRAWING SHALL BE THE BASIS FOR THE DESIGN OF THE SANITARY SEWER SYSTEM. THE CONTRACTOR SHALL VERIFY THE LOCATION AND DEPTH OF EXISTING UTILITIES PRIOR TO STARTING CONSTRUCTION.
- 2. THE CONTRACTOR SHALL VERIFY THE LOCATION AND DEPTH OF EXISTING UTILITIES AS TO SIZE, DEPTH OR CONDITION.
- 3. THE CONTRACTOR SHALL VERIFY THE LOCATION AND DEPTH OF EXISTING UTILITIES AS TO SIZE, DEPTH OR CONDITION.
- 4. THE CONTRACTOR SHALL VERIFY THE LOCATION AND DEPTH OF EXISTING UTILITIES AS TO SIZE, DEPTH OR CONDITION.
- 5. THE CONTRACTOR SHALL VERIFY THE LOCATION AND DEPTH OF EXISTING UTILITIES AS TO SIZE, DEPTH OR CONDITION.
- 6. THE CONTRACTOR SHALL VERIFY THE LOCATION AND DEPTH OF EXISTING UTILITIES AS TO SIZE, DEPTH OR CONDITION.
- 7. THE CONTRACTOR SHALL VERIFY THE LOCATION AND DEPTH OF EXISTING UTILITIES AS TO SIZE, DEPTH OR CONDITION.
- 8. THE CONTRACTOR SHALL VERIFY THE LOCATION AND DEPTH OF EXISTING UTILITIES AS TO SIZE, DEPTH OR CONDITION.
- 9. THE CONTRACTOR SHALL VERIFY THE LOCATION AND DEPTH OF EXISTING UTILITIES AS TO SIZE, DEPTH OR CONDITION.
- 10. THE CONTRACTOR SHALL VERIFY THE LOCATION AND DEPTH OF EXISTING UTILITIES AS TO SIZE, DEPTH OR CONDITION.
- 11. THE CONTRACTOR SHALL VERIFY THE LOCATION AND DEPTH OF EXISTING UTILITIES AS TO SIZE, DEPTH OR CONDITION.
- 12. THE CONTRACTOR SHALL VERIFY THE LOCATION AND DEPTH OF EXISTING UTILITIES AS TO SIZE, DEPTH OR CONDITION.
- 13. THE CONTRACTOR SHALL VERIFY THE LOCATION AND DEPTH OF EXISTING UTILITIES AS TO SIZE, DEPTH OR CONDITION.
- 14. THE CONTRACTOR SHALL VERIFY THE LOCATION AND DEPTH OF EXISTING UTILITIES AS TO SIZE, DEPTH OR CONDITION.
- 15. THE CONTRACTOR SHALL VERIFY THE LOCATION AND DEPTH OF EXISTING UTILITIES AS TO SIZE, DEPTH OR CONDITION.
- 16. THE CONTRACTOR SHALL VERIFY THE LOCATION AND DEPTH OF EXISTING UTILITIES AS TO SIZE, DEPTH OR CONDITION.
- 17. THE CONTRACTOR SHALL VERIFY THE LOCATION AND DEPTH OF EXISTING UTILITIES AS TO SIZE, DEPTH OR CONDITION.

PROPOSED BK & POPEYES FOR
PREMIER KINGS COMPANIES
SHORTER, ALABAMA

ENGINEERING, L.L.C.
4120 SHORTER BLVD., SUITE 100
SHORTER, ALABAMA 36082
PHONE: 205-336-5000
FAX: 205-336-5002

DATE: 08/20/2018

CHECKED BY: [Signature]

DATE: 08/20/2018

DESIGNED BY: [Signature]

DATE: 08/20/2018

PROJECT NO: 18-001

SHEET NUMBER: 10 OF 8