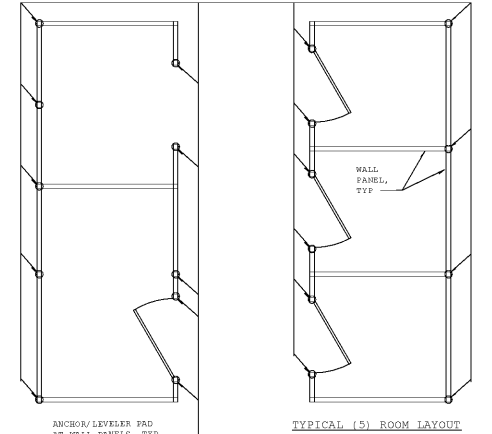


DAMAGED ANCHOR REPAIR PROCEDURE NOTES:

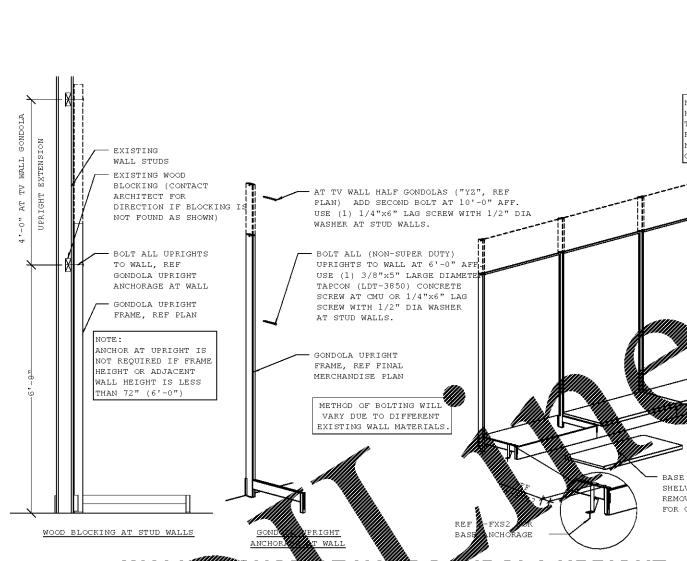
- DETERMINE DAMAGED BOLT TYPE:
 - CONCRETE SCREW BOLTS - ONLY HEX-SHAPED HEAD OF BOLT IS VISIBLE ABOVE BASE PLATE.
 - EXPANSION BOLTS - THREADED ROD AND NUT EXTEND ABOVE BASE PLATE.
- REMOVE EXISTING DAMAGED ANCHOR BOLT:
 - CONCRETE SCREW BOLTS - UNSCREW DAMAGED BOLT FROM CONCRETE SLAB.
 - EXPANSION BOLTS - AFTER REMOVING RACK FRAME CUT BOLT FLUSH WITH CONCRETE SLAB AND DRILL OUT DAMAGED 1/2" DIAMETER BOLT WITH A 9/16" STEEL/METAL DRILL BIT TO HOLE DEPTH SHOWN IN DETAIL ABOVE.
- INSTALL NEW ANCHOR BOLT:
 - IF ONLY ONE BOLT WAS INSTALLED, LEAVE THE DAMAGED BOLT IN PLACE, IF FOREIGN, AND INSTALL A NEW CONCRETE SCREW BOLT IN THE OPEN HOLE. USE A 1/2" DIAMETER DEMALT SCREW BOLT x 3" LONG IN THE OPEN HOLE.
 - CONCRETE SCREW BOLTS - IF A CONCRETE SCREW BOLT WAS REMOVED WITHOUT DAMAGING THE HOLE, THEN REPLACEMENT WITH A NEW CONCRETE SCREW BOLT IS ACCEPTABLE. REPLACE WITH A SCREW BOLT OF THE SAME SIZE AND TYPE. REMOVE EXISTING THREADS IN HOLE. HAND THREAD BOLT UNTIL ONE TIGHT ON BASE PLATE, REF "ANCHOR BOLT DETAIL" ON SHEET FXS2. IF THE BOLT IS DAMAGED, FOLLOW THE EXPANSION BOLTS PROCEDURE.
 - EXPANSION BOLTS - REPLACE DRILLED OUT EXPANSION BOLTS WITH 1/2" DIAMETER ADHESIVE ANCHORS. HOLE CLEANING PROCEDURE MUST BE FOLLOWED IN ACCORDANCE WITH THE MANUFACTURER'S DIRECTIONS. USE 1/2" DIAMETER THREADED ROD (SEE DETAIL ABOVE) WITH POWERS AC100+ GOLD ADHESIVE. INSTALL PER ICC ESR-2582.

13 TYPICAL ANCHOR AT CART RAIL POST
1 1/2" x 1'-0"



NOTE:
1. REFER TO ANCHORAGE PLAN ON SHEET FXS1 FOR FINAL ORIENTATION OF ROOM LAYOUT.
2. REFER TO SUPPLIER FOR INSTALLATION DRAWINGS FOR DIMENSIONS AND FINAL DOOR ORIENTATION.

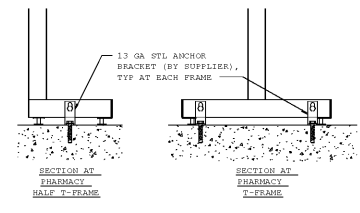
11 TYPICAL ANCHORAGE PLAN AT CHANGING ROOM WALL PANELS
3/8" x 1'-0"



10 WALL ANCHOR AT HALF GONDOLA UPRIGHT

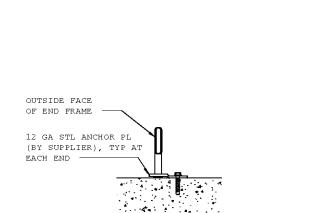
NOTE:
HALF GONDOLAS SHALL BE ANCHORED TO WALL AS SHOWN TO SATISFY OWNER REQUIREMENTS. WALL ANCHORAGE IS NOT REQUIRED FOR SEISMIC DESIGN OR CODE COMPLIANCE.

INSTALLATION NOTES:
1. GAPS BETWEEN SHELVES SHALL NOT EXCEED:
2. UPRIGHTS SHALL NOT EXCEED 7/8" IN HEIGHT AT WALL.
3. SHELVES SHALL NOT JOINT OVER THE FRONT USE TO UPRIGHTS TO REFLECT.
4. SHELVES SHALL NOT BE USED ON ANY HALF GONDOLA THAT WILL CREATE A HEIGHT OF 12" OR TALLER (UNLESS IT IS ANCHORED TO THE WALL). ALL HALF GONDOLAS 12" OR TALLER MUST BE ANCHORED TO THE WALL AT 72" AFF, RE GONDOLA UPRIGHT ANCHORAGE AT WALL.
5. EXTENSION SHALL NOT BE USED ON ANY HALF GONDOLA THAT WILL CREATE A HEIGHT OF 12" OR TALLER (UNLESS IT IS ANCHORED TO THE WALL). ALL HALF GONDOLAS 12" OR TALLER MUST BE ANCHORED TO THE WALL AT 72" AFF, RE GONDOLA UPRIGHT ANCHORAGE AT WALL.



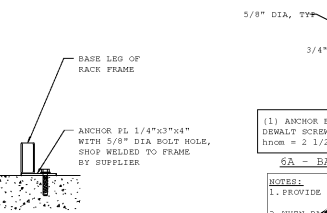
NOTE:
(1) ANCHOR BOLT(S) PER BRACKET: 3/8" DIA DEMALT SCREW BOLT*, REF 4-FXS2. hnom = 2", ho = 2 1/2", (UNO).

9 TYPICAL ANCHOR AT PHARMACY T-FRAMES
1 1/2" x 1'-0"



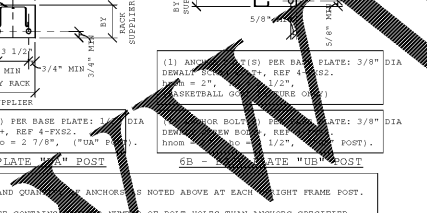
NOTE:
(1) ANCHOR BOLT(S) PER PLATE: 3/8" DIA DEMALT SCREW BOLT*, REF 4-FXS2. hnom = 2", ho = 2 1/2", (UNO).

8 ANCHOR AT END CAP FRAMES
1 1/2" x 1'-0"



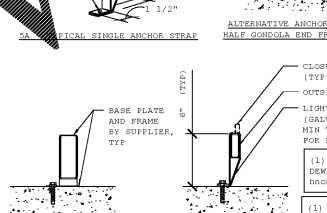
NOTE:
(1) ANCHOR BOLT(S) PER PLATE: 3/8" DIA DEMALT SCREW BOLT*, REF 4-FXS2. hnom = 2", ho = 2 1/2", (UNO).

7 ANCHOR AT BIKE RACK
1 1/2" x 1'-0"



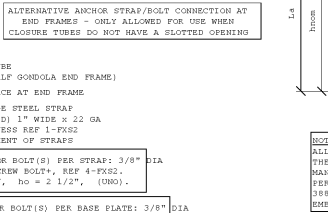
NOTE:
(1) ANCHOR BOLT(S) PER BRACKET: 3/8" DIA DEMALT SCREW BOLT*, REF 4-FXS2. hnom = 2", ho = 2 1/2", (UNO).

6 TYPICAL ANCHOR AT RACK FRAMES
1 1/2" x 1'-0"



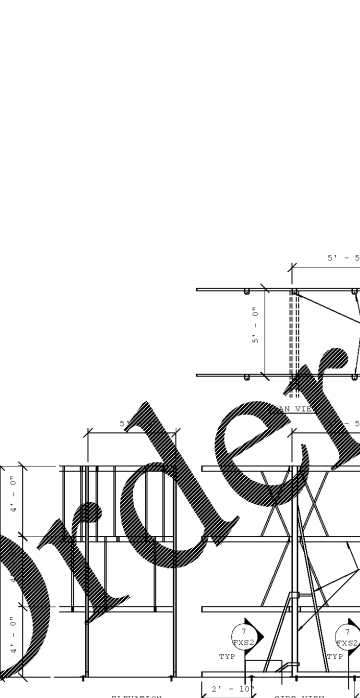
NOTE:
(1) ANCHOR BOLT(S) PER STRAP: 3/8" DIA DEMALT SCREW BOLT*, REF 4-FXS2. hnom = 2", ho = 2 1/2", (UNO).

5 TYPICAL ANCHOR AT GONDOLA FRAMES
1 1/2" x 1'-0"

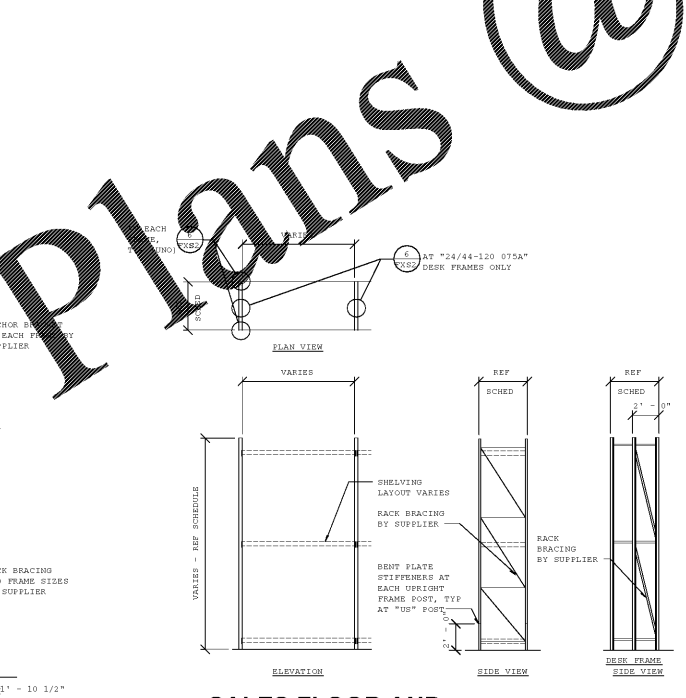


NOTE:
ALL ANCHOR BOLTS SHALL BE DEMALT SCREW BOLT*. THE ANCHORS MUST BE INSTALLED IN ACCORDANCE WITH THE MANUFACTURER'S PUBLISHED INSTALLATION INSTRUCTIONS AND PER ICC ESR-3889 REPORT. (IN CASE OF CONFLICT, THE ICC ESR-3889 GOVERNS). REF ANCHOR DETAILS FOR DIAMETER AND EMBEDMENT.

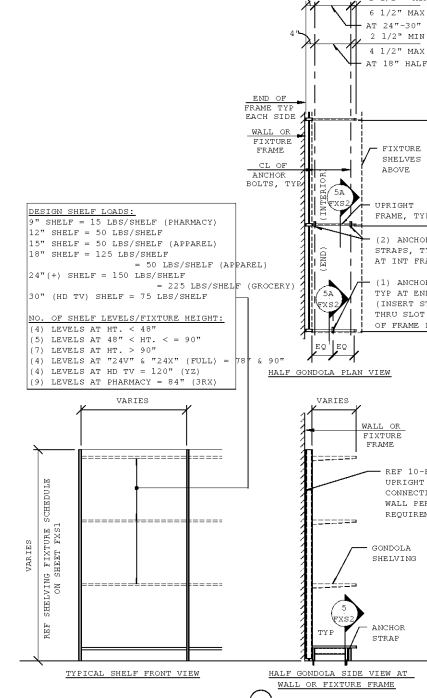
4 ANCHOR BOLT DETAIL
NTS



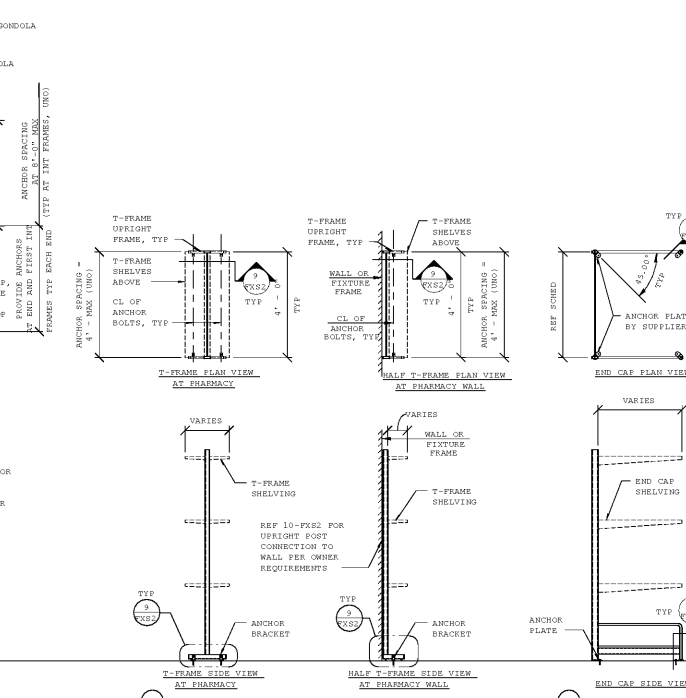
3 BIKE RACK ELEVATION
14" x 1'-0"



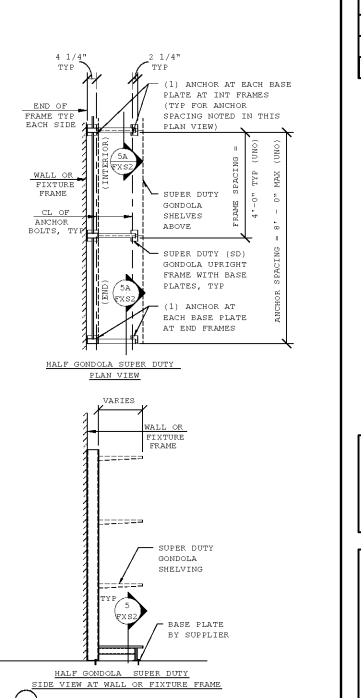
2 SALES FLOOR AND STORAGE AREA RACK ELEVATIONS
3/16" x 1'-0"



1 TYPICAL GONDOLA, PHARMACY T-FRAME AND END CAP SHELVING ELEVATIONS
3/8" x 1'-0"



18 TYPICAL SHELF FRONT VIEW
19 HALF GONDOLA SIDE VIEW AT WALL OR FIXTURE FRAME
16 T-FRAME SIDE VIEW AT PHARMACY



17 END CAP SIDE VIEW
20 HALF GONDOLA SUPER DUTY SIDE VIEW AT WALL OR FIXTURE FRAME

STIPULATION FOR THE USER:
THIS DRAWING IS THE PROPERTY OF JOHNSTON ASSOCIATES, INC. AND IS NOT TO BE REPRODUCED, COPIED, OR TRANSMITTED IN ANY FORM OR BY ANY MEANS, ELECTRONIC OR MECHANICAL, INCLUDING PHOTOCOPYING, RECORDING, OR BY ANY INFORMATION STORAGE AND RETRIEVAL SYSTEM, WITHOUT THE WRITTEN PERMISSION OF JOHNSTON ASSOCIATES, INC. THIS DRAWING IS NOT TO BE USED FOR ANY OTHER PROJECT OR FOR ANY OTHER PURPOSE WITHOUT THE WRITTEN PERMISSION OF JOHNSTON ASSOCIATES, INC.

CONSULTANTS:
JOHNSTON ASSOCIATES, INC.
139 SC GENERAL REMODEL
STORE NO. 2650
JESUP, GA
28027

ISSUE BLOCK

NO.	DATE	DESCRIPTION

CHECKED BY: DGH
DRAWN BY: VH
PROTO: 139 SC
PROTO CYCLE: 08/31/18
DOCUMENT DATE: 10/05/18
JBA PROJECT NO: 1835002650

NOT FOR CONSTRUCTION

OWNER PROVIDED INFORMATION
NOT FOR REGULATORY APPROVAL OR PERMITTING

FIXTURE ANCHORAGE DETAILS

SHEET: FXS2