

165 Progress Ave  
Atlanta, GA 30334  
Phone: 404.525.1000  
Fax: 404.525.1001  
www.pj.com

**PRODUCE LIGHTING  
GENERAL NOTES**

1. TRACK LIGHTING INSTALLATION
  - A. ORIENT TRACK TO UTILIZE LEFT FEED CURRENT LIMITERS.
  - B. PROVIDE POWER TO EACH FIXTURE ROW VIA 1/2" FLEXIBLE METAL CONDUIT.
  - C. FIXTURES SHALL BE ATTACHED DIRECTLY TO TRACK UTILIZING PROVIDED CONNECTORS.
  - D. TRACK IS TWO-CIRCUIT. STRIP FIXTURES SHALL BE CONNECTED TO ONE CIRCUIT AND CYLINDER FIXTURES SHALL BE CONNECTED TO OTHER CIRCUIT. CYLINDERS AND STRIPS CANNOT BE ON THE SAME CIRCUIT.
  - E. REFERENCE MANUFACTURER'S INSTALLATION INSTRUCTIONS FOR INFORMATION ON ATTACHING FIXTURES TO TRACK.
2. TRACK LIGHTING MOUNTING HEIGHT CONSIDERATIONS
  - A. UTILIZE PROVIDED AIRCRAFT CABLE PER MANUFACTURER'S RECOMMENDATIONS TO SUSPEND TRACK FOLLOWING EXACT ALTERNATE 1. SEE DRAWING FOR DIMENSIONS. IF THERE ARE ANY OBSTRUCTIONS TO STRIP MOUNTING HEIGHT (E.G. DOORS), MOUNT TRACK AT AN OBSTRUCTION. STRIP POSITIONING SHALL BE UNIFORM.
  - ALTERNATE 2: IF PRODUCE AREA GIRDERS IS PARALLEL TO TRACK OR IF PRODUCE AREA GIRDER IS PERPENDICULAR TO TRACK AND BOTTOM OF GIRDERS IS ABOVE 14', SUSPEND TRACK TO A UNIFORM 16" HEIGHT.
  - ALTERNATE 3: IF PRODUCE AREA GIRDER IS PERPENDICULAR TO TRACK AND BOTTOM OF GIRDER IS BELOW 16', TRACK SHALL RUN THROUGH GIRDER WEBS AND BE SUSPENDED TO A UNIFORM 16"-0" HEIGHT. UNIFORMLY ADJUST ALL TRACK LOCATIONS TO ENSURE THE SPACE BETWEEN THE STRIP AND GIRDERS IS UNIFORM.
3. TRACK LIGHTING TESTING
  - A. UPON COMPLETION OF INSTALLATION, CONTRACTOR SHALL TEST PRODUCE LIGHTS FOR PROPER OPERATION.
  - B. ENSURE CORRECT SIZE CURRENT LIMITERS ARE INSTALLED ON EACH TRACK ROW PER PLANS.
  - C. ENSURE CYLINDER FIXTURES ARE CONNECTED TO THE SMALLER OF TWO CURRENT LIMITER SIZES ON EACH ROW.
  - D. ENSURE ALL CYLINDERS ARE ON THE SAME CIRCUIT(S).
  - E. ENSURE ALL STRIP FIXTURES ARE ON THE SAME CIRCUIT(S).

**KEYNOTES**

- 16.125 EXISTING LIGHT FIXTURES TO REMAIN UNLESS NOTED OTHERWISE.
- 16.126 EXISTING LIGHT FIXTURE TO BE DEMOLISHED.
- 16.129 CONNECT TO EXISTING CIRCUIT PREVIOUSLY SERVING AREA LIGHTING THAT HAS REMOVED. MAINTAIN EXISTING CIRCUIT CONTROL UNLESS NOTED OTHERWISE. PROVIDE CONSTANT HOT FOR EMERGENCY EXIT AND LOCALLY CONTROLLED LIGHT FIXTURES.
- 16.131 CONNECT TO EXISTING CIRCUIT. E.C. SHALL VERIFY PRIOR TO ROOM-IN THAT EXISTING CIRCUIT HAS SUFFICIENT CAPACITY TO ACCOMMODATE ADDITIONAL LOAD.
- 16.148 ROUTE CIRCUIT THROUGH CONTACTOR. REFER TO POWER AND EMS ONE-LINE DIAGRAMS.
- 16.900 PROVIDE DI-LEVEL LIGHTING BY ALTERNATING SWITCH LEGS BETWEEN LIGHT FIXTURES. (CHECKERBOARD)

THIS DRAWING HAS BEEN PREPARED FOR THE PROJECT DESCRIBED HEREIN AND IS NOT TO BE USED FOR ANY OTHER PROJECT WITHOUT THE WRITTEN CONSENT OF THE DESIGNER. THE DESIGNER SHALL BE RESPONSIBLE FOR THE ACCURACY OF ALL INFORMATION PROVIDED TO THE DESIGNER AND FOR THE RESULTS OF ANY FIELD VERIFICATION. THE DESIGNER SHALL NOT BE RESPONSIBLE FOR ANY OMISSIONS, ERRORS, OR INADEQUACIES IN THE WORK OR FOR ANY CONSEQUENCES OF ANY SUCH OMISSIONS, ERRORS, OR INADEQUACIES.

COMMENTS

JESUP, GA  
STORE NO. 2630  
2869281 PHOTO  
JOB NUMBER

ISSUE BLOCK

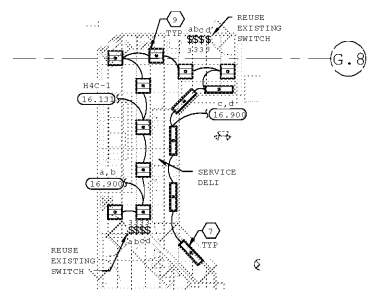
NO.	DESCRIPTION	DATE

CHECKED BY: JPH  
DRAWN BY: MD  
PHOTO CYCLE: 07/27/11  
DOCUMENT DATE: 10/05/11

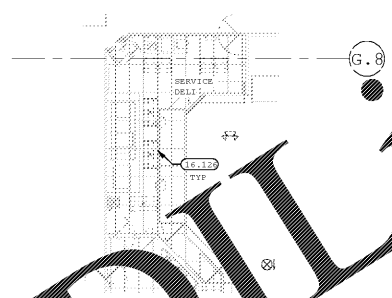
NOT FOR CONSTRUCTION

GROCERY LIGHTING PLANS

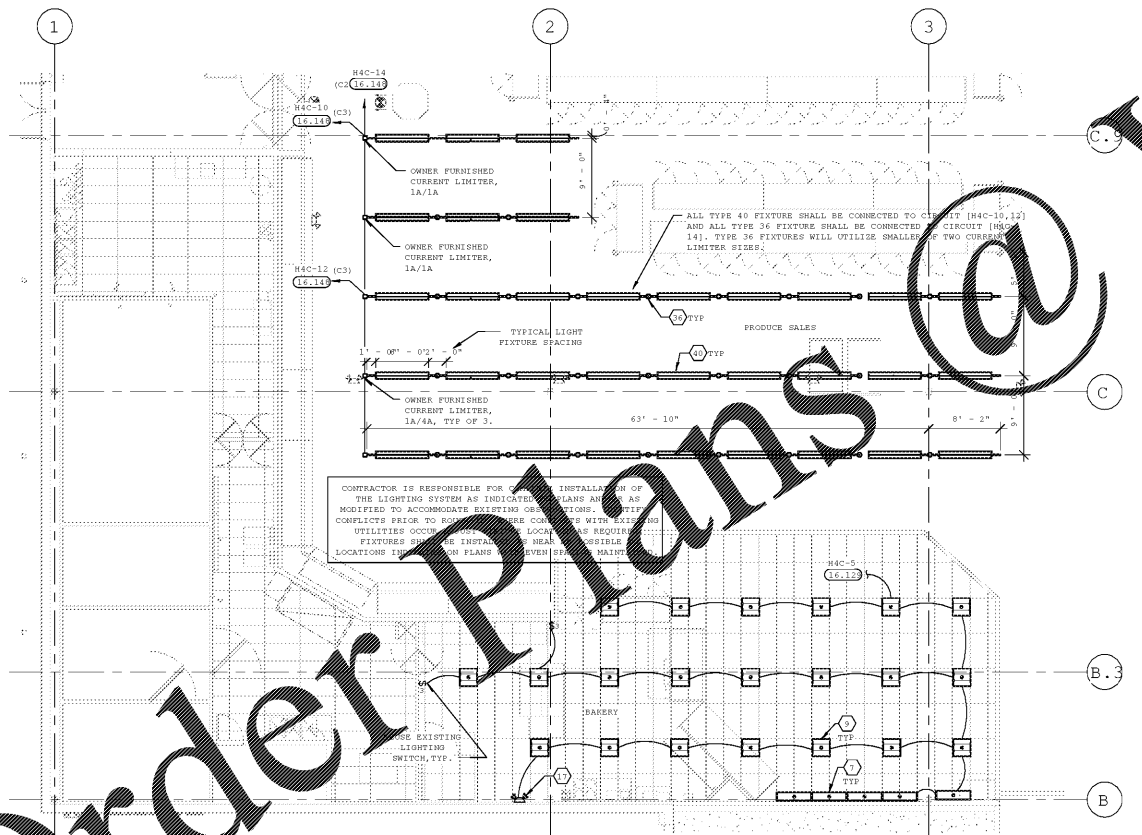
SHEET: GE1



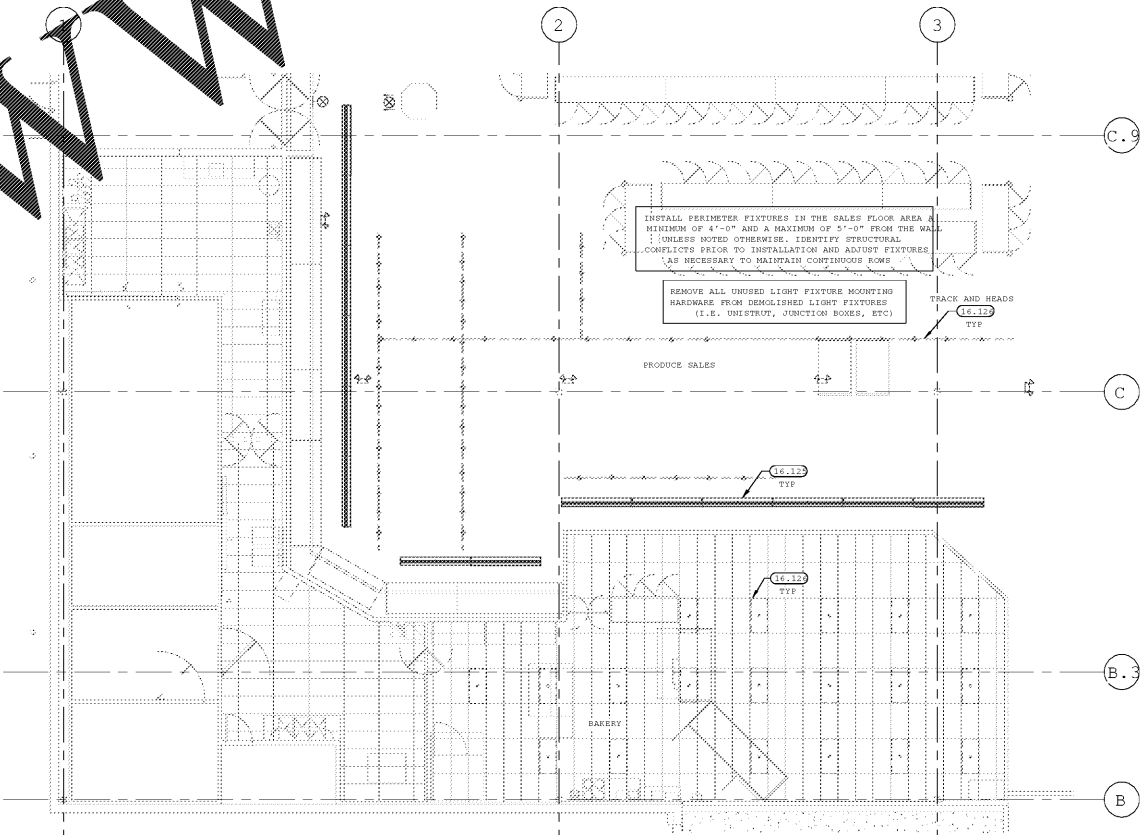
4 SERVICE DELI LIGHTING PLAN  
1" = 10'-0"



3 SERVICE DELI LIGHTING DEMO PLAN  
1" = 10'-0"



2 GROCERY LIGHTING PLAN  
1/8" = 1'-0"



1 GROCERY LIGHTING DEMO PLAN  
1/8" = 1'-0"

EXISTING CONDITIONS WERE TAKEN FROM ORIGINAL DRAWINGS AND MAY NOT REFLECT EXACT "AS-BUILT" CONDITIONS. CONTRACTOR SHALL FIELD VERIFY ALL EXISTING CONDITIONS PRIOR TO SUBMITTING FINAL BIDS. CONTRACTOR SHALL CAREFULLY COORDINATE NEW WORK AND DEMOLITION WITH ALL OTHER DISCIPLINES AND EXISTING CONDITIONS.

EACH SUBCONTRACTOR IS RESPONSIBLE FOR HAVING A THOROUGH KNOWLEDGE OF ALL DRAWINGS AND SPECIFICATIONS IN THEIR RELATED FIELD. THE FAILURE TO ACCORD WITH THIS KNOWLEDGE DOES NOT RELIEVE THE RESPONSIBILITY OF PERFORMING THE WORK PROPERLY. NO ADDITIONAL COMPENSATION SHALL BE ALLOWED BECAUSE OF CONDITIONS THAT OCCUR DUE TO FAILURE TO FAMILIARIZE WORKERS WITH THIS KNOWLEDGE.

Order Plans @

WWW.LDILine.com

20/10/2010 10:01:12 PM