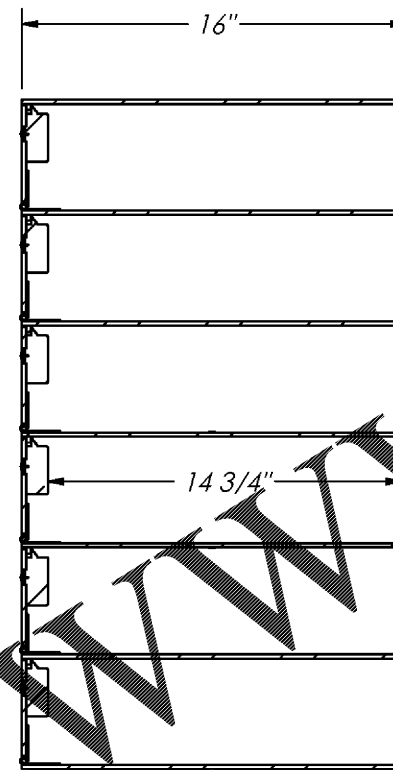
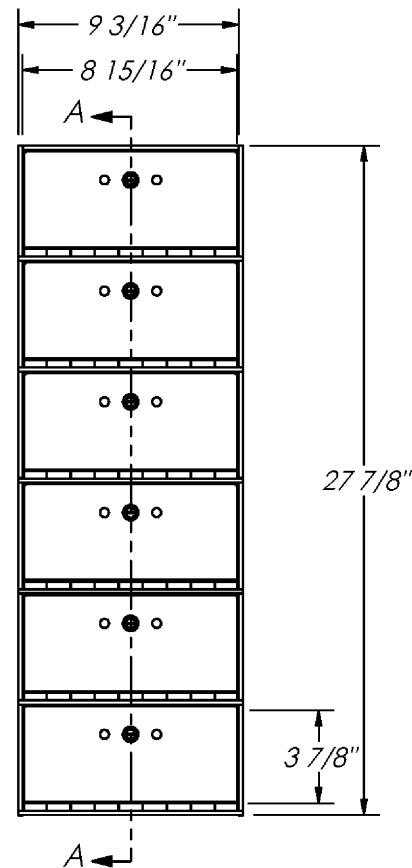


CUSTOMER:

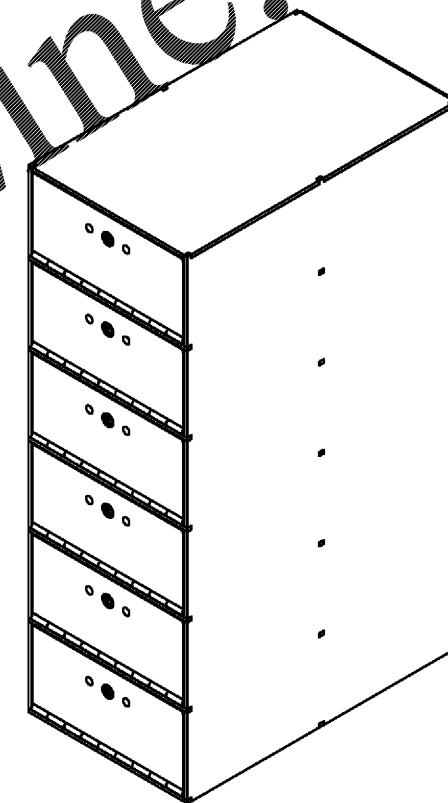
APPROVED BY:

DATE:

REVISIONS				
ECR	REV.	DESCRIPTION	DATE	APPROVED
	B	REDUCED HEIGHT BY 4" BY REMOVING TOE KICK, ALSO REMOVED BOTTOM ANCHOR HOLES	1/13/2016	DAJ



SECTION A-A



LOCKER SPECIFICATIONS:

EXTERIOR SIZE: 27-7/8" H X 9-3/8" W X 16" D

LOCKER BODY: B-RATE (7 GA - 3/16" STEEL) - DOORS HINGED AT BOTTOM
EXTERIOR DOOR: B-RATE (7 GA - 3/16" STEEL)

EXTERIOR DOOR LOCK: MASTER 714 (KEYED DIFFERENT W/MASTER KEY)

COLOR: GRAPHITE

ADDITIONAL FEATURES:

(2) 3/4" ANCHOR HOLES IN BACK WALL

PROPRIETARY AND CONFIDENTIAL
 THE INFORMATION CONTAINED IN THIS DRAWING IS THE SOLE PROPERTY OF FIREKING SECURITY GROUP. ANY REPRODUCTION IN PART OR AS A WHOLE WITHOUT THE WRITTEN PERMISSION OF FIREKING SECURITY GROUP IS PROHIBITED.

UNLESS OTHERWISE SPECIFIED:		NAME	DATE	FIREKING SECURITY GROUP New Albany, Indiana 47150	
DIMENSIONS ARE IN INCHES TOLERANCES: FRACTIONAL ±1/16 ANGULAR: MACH ±.5° BEND ±1° TWO PLACE DECIMAL ±.010 THREE PLACE DECIMAL ±.002 FOUR PLACE DECIMAL ±.0005		ENGINEER	D. Jones		
MATERIAL: SEE BOM		DRAWING	D. Jones	11/03/15	Title: <i>CUSTOM TILL LOCKER</i>
FINISH: N/A		THIRD ANGLE PROJECTION		Model: G 9654-0	
DO NOT SCALE DRAWING		COMMENTS: SALES CONCEPT		SIZE B	DWG. NO. G-96540 SPEC
				SCALE: 1:8	WEIGHT: 127.533
				SHEET 1 OF 1	