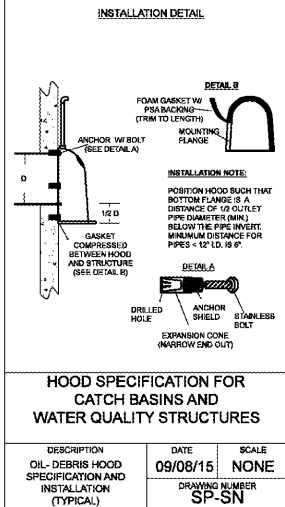
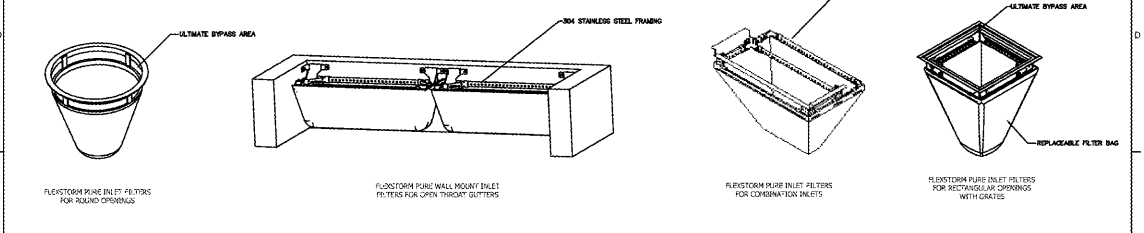


**NOTES:**

- ALL HOODS AND TRAPS FOR CATCH BASINS AND WATER QUALITY STRUCTURES SHALL BE AS MANUFACTURED BY BEST MANAGEMENT PRODUCTS, INC. 53 MT. ARCHER RD. LYME, CT 06257 (860) 434-2277, (860) 434-3195 FAX TOLL FREE: (800) 854-8008 OR (888) 434-0277 WEB SITE: WWW.BMP.COM OR PRE-APPROVED EQUAL.
- ALL HOODS SHALL BE CONSTRUCTED OF A GLASS REINFORCED RESIN COMPOSITE WITH ISO GEL COAT EXTERIOR FINISH WITH A MINIMUM 0.125\"/>



**FLEXSTORM PURE FILTERS FOR PERMANENT INLET PROTECTION PRODUCT SELECTION AND SPECIFICATION DRAWING**



For Round Openings with Grates	Minimum Bypass Flow Rates (CFM) <sup>1</sup>	For Open Throat Curb Inlets - Mounted to Wall Beneath Curb Opening	For Rectangular/Square Openings with Grates	Minimum Bypass Flow Rates (CFM) <sup>1</sup>
Drop Thru Opening Size Dia	Hexastorm Frame P/N	Curb Opening Size	Clear Drop Thru Opening Size (Net grates or seat size)	Hexastorm Frame P/N
1/2\"/>				

**CREATE YOUR ADS FLEXSTORM PART NUMBER BY COMBINING FRAME P/N AND BAG P/N**

1. IDENTIFY YOUR FLEXSTORM FRAME PART NUMBER FROM TABLES ABOVE  
2. SELECT YOUR BAG PART NUMBER BASED ON APPLICATION NEEDS

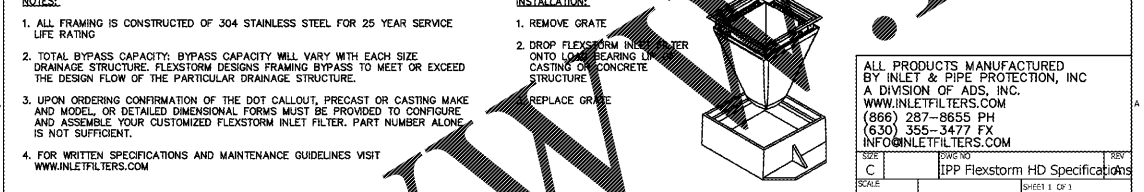
FLEXSTORM FILTER BAGS	(22\"/>			
FX: Standard Woven Bag	FX	FX-S	200	40
FX+: Woven w/ MyCelx	FXP	FXP-S	200	40
FXD: Woven w/ Oil Bottom	FXD	FXD-S	200	40
PC: Post-Construction Bag	PC	PC-S	137	140
PC+: PC Bag w/ MyCelx	PCP	PCP-S	137	140
LL: Litter and Leaf Bag	LL	LL-S	High	3.5
LLD: D Non-Woven Bag	LLD	LLD-S	145	20

**3. CREATE YOUR FLEXSTORM INLET FILTER PART NUMBER**

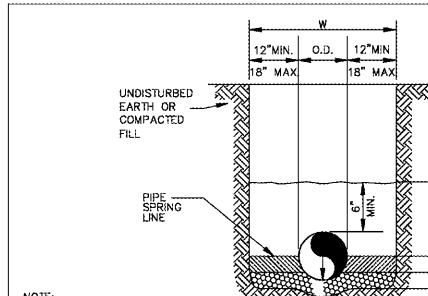
Frame P/N from Step 1, Filter Bag P/N from Step 2

**NOTES:**

- ALL FRAMING IS CONSTRUCTED OF 304 STAINLESS STEEL FOR 25 YEAR SERVICE LIFE RATING
- TOTAL BYPASS CAPACITY: BYPASS CAPACITY WILL VARY WITH EACH SIZE DRAINAGE STRUCTURE. FLEXSTORM DESIGNS FRAMING BYPASS TO MEET OR EXCEED THE DESIGN FLOW OF THE PARTICULAR DRAINAGE STRUCTURE.
- UPON ORDERING CONFIRMATION OF THE DOT CALLOUT, PRECAST OR CASTING MAKE AND MODEL, OR DETAILED DIMENSIONAL FORMS MUST BE PROVIDED TO CONFIRM AND ASSEMBLE YOUR CUSTOMIZED FLEXSTORM INLET FILTER. PART NUMBER ALONE IS NOT SUFFICIENT.
- FOR WRITTEN SPECIFICATIONS AND MAINTENANCE GUIDELINES VISIT WWW.INLETFILTERS.COM



ALL PRODUCTS MANUFACTURED BY INLET & PIPE PROTECTION, INC. A DIVISION OF ADS, INC. WWW.INLETFILTERS.COM (866) 287-8655 PH (630) 355-3477 FX INFO@INLETFILTERS.COM



**STORM DRAIN**  
N.T.S.

**GENERAL NOTES:**

- BEDDING SHALL BE WORKED BY HAND AND SHALL BE A BLEND OF ANGULAR MATERIAL THAT CONFORMS TO THE FOLLOWING SIEVE ANALYSIS: 100% PASSING 1-1/2 INCHES, 0-10% PASSING NO. 4 AND 0-5% PASSING NO. 200. IF GROUNDWATER IS ANTICIPATED, THEN BEDDING SHALL CONFORM TO THE FOLLOWING SIEVE ANALYSIS: 100% PASSING 1-1/2 INCHES, 0-50% PASSING NO. 4, AND 0-5% PASSING NO. 200 COMPACTED TO 95% STANDARD PROCTOR.
- HAUNCHING AND INITIAL BACKFILL SHALL BE WORKED AROUND THE PIPE BY HAND TO ELIMINATE VOIDS AND SHALL BE THE SAME AS THE BEDDING MATERIAL OR COARSE-GRAINED SOILS CONFORMING TO ASTM D2487 GROUP SYMBOL: GW, GP, SW, AND SP COMPACTED TO 95% PROCTOR.
- FINAL BACKFILL SHALL BE ANGULAR MATERIAL THAT CORRESPONDS TO THE FOLLOWING SIEVE ANALYSIS: 100% PASSING 1-1/2 INCHES, 0-10% PASSING NO. 4, AND 0-5% PASSING NO. 200 OR 100% PASSING 1-1/2 INCHES, 0-50% PASSING NO. 4, AND 0-5% PASSING NO. 200.
- COARSE GRAIN SOILS WITH OR WITHOUT FINES THAT CONFORM TO ASTM D2487 SYMBOLS: GP, SW, SP, GM, GC, SM, AND SC MATERIAL TO BE COMPACTED AS NOTED IN NOTE 2.
- ALL MATERIALS SHALL BE INSTALLED IN ACCORDANCE WITH ASTM D 2321-89.
- ALL MATERIALS SHALL BE INSTALLED IN MINIMUM 8\"/>

Issued:	Date:
A PERMIT SUBMITTAL	10/11/18
B	
C	
D	
Revisions:	Date:
1	
2	
3	
4	
5	



MICHAEL G. LUKUS, P.E. SEAL  
PROJECT ENGINEER: DATE  
DRAWN BY: DATE  
CHECKED: DATE

**CSS**  
Commercial Site Solutions, Inc.  
ENGINEERING • LANDSCAPE ARCHITECTS  
SC C.O.A. 3505

402 EAST 1ST AVENUE / EASTLEY, SC 29640 / 864-855-5200  
21764 STATE ROAD 54 / LUTZ, FL 33549 / 813-885-2032

**ALDI Inc.**  
1597 Dry Pond Road  
Jefferson, GA 30549  
(706) 387-7700 (ext 122) phone  
(706) 387-7701 fax  
Contact: Robert Ochs

**PROPOSED EXPANSION ALDI STORE #61**

2589 SPRING ROAD  
SMYRNA, GA 30328  
COBB COUNTY

Project Name & Location	
<b>STORMDRAIN DETAILS</b>	
Drawing Name:	Project No.
Date: 6/5/18	
Revised: ---	
Drawn By: RSM	<b>C-5.1</b>
Scale: As Noted	Drawing No.

Order Plans @