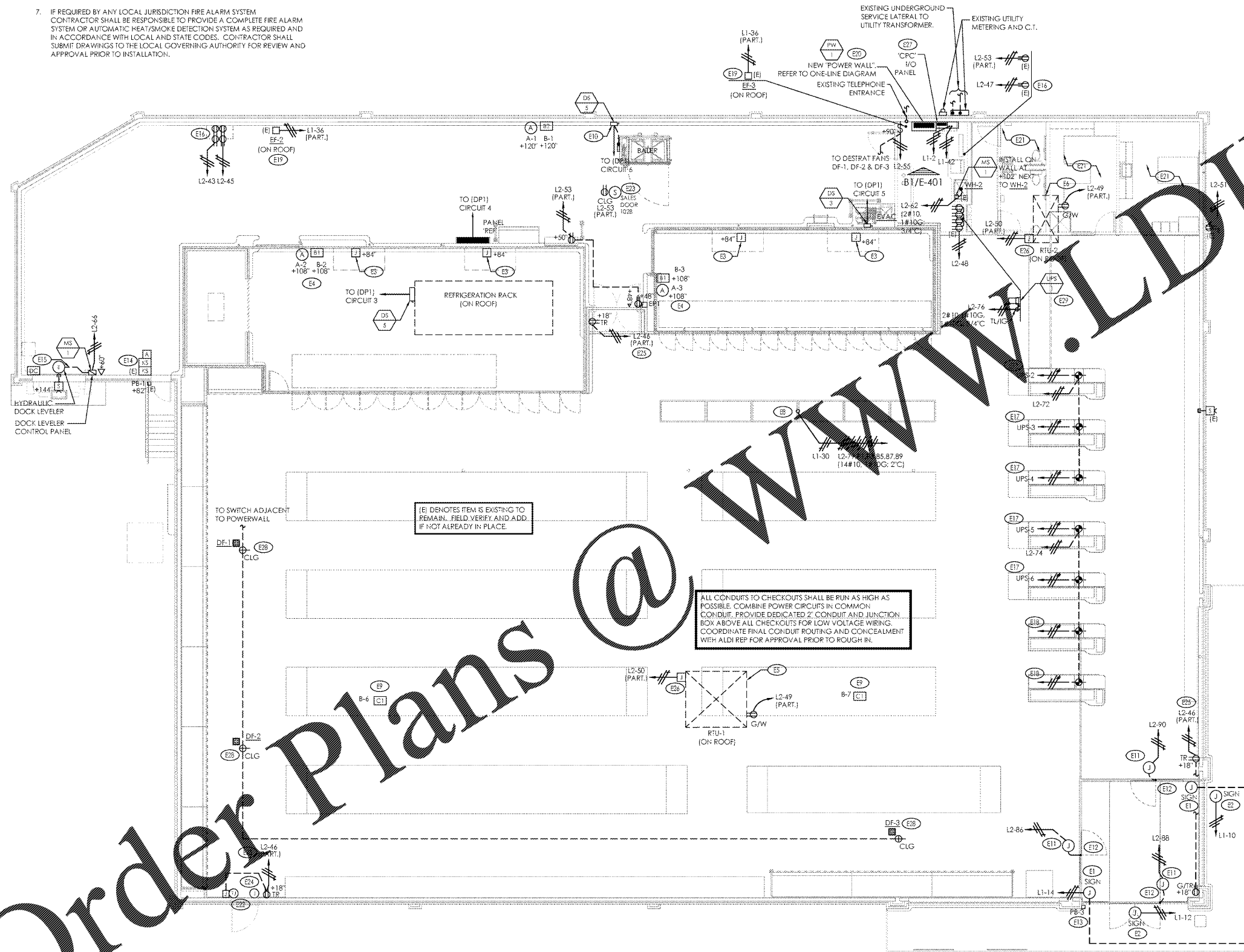


GENERAL ELECTRICAL NOTES:

- ALL HEIGHT DIMENSIONS (e.g. +102) ARE FROM THE FINISHED FLOOR TO THE CENTERLINE OF THE DEVICE.
- REFER TO SHEET E-001 FOR MATERIAL LIST AND GENERAL INSTALLATION NOTES.
- REFER TO D1/E-502 FOR BELL AND BUZZER WIRING REQUIREMENTS.
- REFER TO D1/E-401 FOR ONE-LINE DIAGRAM.
- REFER TO SHEET E-401 FOR SCHEDULE OF CIRCUITS FOR PANEL 'L1' & 'L2'.
- IN AREAS WHERE NO CEILING IS INSTALLED, CONDUIT SHALL BE RUN JUST BELOW ROOF DECK AT BOTTOM OF UPPER CHORD OF ROOF JOISTS.
- IF REQUIRED BY ANY LOCAL JURISDICTION FIRE ALARM SYSTEM CONTRACTOR SHALL BE RESPONSIBLE TO PROVIDE A COMPLETE FIRE ALARM SYSTEM OR AUTOMATIC HEAT/SMOKE DETECTION SYSTEM AS REQUIRED AND IN ACCORDANCE WITH LOCAL AND STATE CODES. CONTRACTOR SHALL SUBMIT DRAWINGS TO THE LOCAL GOVERNING AUTHORITY FOR REVIEW AND APPROVAL PRIOR TO INSTALLATION.



ELECTRICAL PLAN KEYNOTES:

- INSTALL JUNCTION BOXES AND BRANCH CIRCUIT FOR FUTURE SIGNS 12" ABOVE VESTIBULE CEILING. PROVIDE 1/2" ELECTRICAL NON-METALLIC TUBING FOR LOW VOLTAGE CABLING FROM ABOVE VESTIBULE CEILING TO EACH GRAPHIC LOCATION CONCEALED IN WALL PRIOR TO DRYWALL INSTALLATION. PROVIDE CAP ON EXTERIOR AND SEAL CONDUIT END WATERTIGHT. REFER TO ARCHITECTURAL ELEVATIONS FOR CONDUIT STUB LOCATIONS AND VERIFY REQUIREMENTS WITH GENERAL CONTRACTOR AND SIGN INSTALLER.
- INSTALL JUNCTION BOXES AND BRANCH CIRCUIT FOR LOGO SIGNS. VERIFY LOCATIONS AND REQUIREMENTS WITH GENERAL CONTRACTOR, SIGN INSTALLER AND ARCHITECTURAL ELEVATIONS.
- SURFACE MOUNT JUNCTION BOX WITH 1/2" EMT STUBBED THROUGH TOP OF COOLERS AND FREEZER. SEAL PENETRATION WATER TIGHT USING METHOD APPROVED BY REFRIGERATION CONTRACTOR. CONDUITS PASSING THROUGH COOLER/FREEZER WALLS SHALL BE FILLED AND SEALED PER NEC 300.7.
- SEAL ENCLOSURES AND CONDUIT PENETRATIONS THROUGH COOLER AND FREEZER WATER TIGHT USING METHOD APPROVED BY REFRIGERATION CONTRACTOR. CONDUITS PASSING THROUGH COOLER/FREEZER WALLS SHALL BE FILLED AND SEALED PER NEC 300.7.
- RTU-1 MOUNTED ON ROOF. REFER TO E3/E-501, D3/E-501 AND ONE-LINE DIAGRAM ON DRAWING E-401 FOR WIRING REQUIREMENTS.
- RTU-2 MOUNTED IN REFRIGERATION RACK. REFER TO E3/E-501 AND ONE-LINE DIAGRAM ON DRAWING E-401 FOR WIRING REQUIREMENTS.
- NOT TO BE USED.
- LOCATE POWER LIGHT ABOVE SPOT MERCHANDISER. REFER TO DETAIL B2/E-502 FOR INSTALLATION REQUIREMENTS.
- SALES FLOOR PRIMES SHALL BE MOUNTED IN THE WALL MOUNT (VERTICAL) POSITION. INSIDE OF JOIST GIRDER IN LOCATIONS INDICATED. CHIMES WILL NOT BE MOUNTED IN CEILING MOUNT POSITION (HORIZONTAL). REFER TO D1/E-501 FOR BELL AND BUZZER WIRING DIAGRAM.
- PROVIDE FLEXIBLE CONDUIT BETWEEN DISCONNECT AND BALER LONG ENOUGH TO MOVE BALER 3' FROM WALL. ANCHOR DISCONNECT SECURELY TO FRAMING INSIDE WALL. FIELD VERIFY DISCONNECT LOCATION WITH EQUIPMENT POWER FEED PRIOR TO ROUGH-IN.
- E.C. SHALL INSTALL JUNCTION BOX ABOVE DOOR IN ENTRY AREA. EXTEND FLEXIBLE CONDUIT AND CONDUCTORS THROUGH MULLION TO DOOR OPERATOR LOCATION. CONNECTION TO OPERATOR BY E.C.
- VERIFY LOCATION OF DOOR OPERATOR IN ENTRY AREA WITH DOOR SUPPLIER FOR CONDUIT INSTALLATION.
- INSTALL PB-3 AT +82" IN THE ALUMINIUM DOOR JAMB PERPENDICULAR TO GLASS IN LOCATION SHOWN. VERIFY EXACT LOCATION WITH ALDI REP.
- EXISTING SECURITY SYSTEM TO REMAIN.
- PROVIDE 1-1/2" CONDUIT CONCEALED IN CONCRETE FROM CONTROL PANEL TO DOCK LEVELER. COORDINATE WITH EQUIPMENT INSTALLER. REFER TO ARCHITECTURAL DRAWINGS FOR OVERHEAD DOOR SILL DETAIL.
- CENTER RECEPTACLES ALONG SHELF. INSTALL RECEPTACLES 18" ABOVE SHELF SPACED 12" ON CENTER. PROVIDE 6" LONG 'SO' CORE AND INSTALL ON BATTERY CHARGERS.
- WIRE THROUGH CIRCUIT BREAKER IN (UPS#1) WITH MINIMUM #12 CONDUCTORS IN CONDUIT. REFER TO B1 & C1 ON DRAWING E-501 FOR WIRING DIAGRAMS. ALL UPS POWERED RECEPTACLES SHALL BE LABELED ON DEVICE FACEPLATE 'UPS #' WHERE # = CIRCUIT NUMBER.
- INSTALL JUNCTION BOXES WITH CIRCUITS INDICATED AS HIGH AS POSSIBLE FOR FUTURE CHECKOUTS. UPS CIRCUITS SHALL BE LABELED AND TERMINATE IN JUNCTION BOX ABOVE UPS LOCATION FOR FUTURE INSTALLATION OF ADDITIONAL UPS AND BYPASS.
- SWITCH EF-2 & EF-3 WITH EMS SYSTEM THROUGH CONTACTOR ENCLOSURE. REFER TO CONTROL DIAGRAM D1/E-102.
- REFER TO EMS DRAWINGS FOR ADDITIONAL INFORMATION ON EMS DEVICES MOUNTED IN POWER WALL.
- POWER IN THIS AREA TO REMAIN AS IS.
- PROVIDE 120V CONNECTION FROM CONVENIENCE RECEPTACLE BRANCH CIRCUIT TO DETEX TRANSFORMER SUPPLIED BY G.C.. INSTALL TRANSFORMER IN SURFACE MOUNTED 4 SQ. JUNCTION BOX JUST BELOW ROOF DECK AND PROVIDE 3/4" CONDUIT CONCEALED IN WALL TO JUNCTION BOX IN DOOR FRAME FOR LOW VOLTAGE CABLING. REFER TO ARCHITECTURAL INTERIOR ELEVATIONS FOR BOX AND CONDUIT LOCATIONS. PROVIDE ALL BOXES. CONDUIT AND WIRING REQUIRED FOR DETEX DOOR ALARMS PER MANUFACTURERS INSTRUCTIONS. REFER TO DETAIL B4/E-501.
- INSTALL REMOTE SOUNDER SUPPLIED BY G.C. TO BOTTOM OF BAR JOIST IN LOCATIONS INDICATED FOR DETEX DOOR ALARM. PROVIDE RECEPTACLE AT TOP CHORD OF ROOF JOIST FOR REMOTE SOUNDER POWER CONNECTED TO CONVENIENCE RECEPTACLE CIRCUIT INDICATED. PROVIDE 3/4" CONDUIT CONCEALED IN WALL BETWEEN JUNCTION BOX IN DOOR FRAME AND WHERE SIGNAL WIRE CAN BE CONCEALED IN ROOF STRUCTURE. RUN SIGNAL WIRE TO REMOTE SOUNDER LOCATION AND CONCEAL IN ROOF JOISTS. REFER TO ARCHITECTURAL INTERIOR ELEVATIONS FOR BOX AND CONDUIT LOCATIONS. PROVIDE ALL BOXES. CONDUIT AND WIRING REQUIRED FOR DETEX DOOR ALARMS PER MANUFACTURERS INSTRUCTIONS. REFER TO DETAIL B4/E-501.
- FOR SECURITY ROUGH-IN FOR CONDUIT AND JUNCTION BOX REQUIREMENTS AT DOORS. REFER TO ARCHITECTURAL INTERIOR ELEVATIONS. INSTALL JUNCTION BOXES AND CONDUIT AS REQUIRED. ELECTRICAL CONTRACTOR SHALL FURNISH AND INSTALL ALL CONDUIT FOR SECURITY AND FIRE ALARM SYSTEM. COORDINATE FINAL BOX AND CONDUIT REQUIREMENTS WITH ALARM CONTRACTORS. WIRING FURNISHED AND INSTALLED BY ALARM CONTRACTORS.
- ROUTE #10 AWG CONDUCTORS FOR ENTIRE LENGTH OF CIRCUIT.
- JUNCTION BOX FOR 120VOLT POWER CONNECTION TO RTU SMOKE DETECTOR.
- ELECTRICAL SERVICE ENTRANCE TO BE REUSED. REFER TO ONE-LINE DIAGRAM D1/E-401. COORDINATE WITH UTILITY COMPANY PRIOR TO BID.
- PROVIDE A NEMA LS-15 RECEPTACLE MOUNTED AT ROOF DECK ELEVATION ADJACENT TO FAN. PROVIDE MATCHING CORD AND PLUG ON FAN.
- REFER TO A1/E-501 FOR WIRING DIAGRAM FOR (UPS#1) AND SYSTEM BYPASS. (UPS#1) AND SYSTEM BYPASS TO BE MOUNTED ON THE SHELF BY G.C. COORDINATE TWIST LOCK RECEPTACLE LOCATION WITH SHELF AND UNIT. VERIFY EXACT LOCATION WITH ALDI REPRESENTATIVE. G.C. SHALL COORDINATE UPS SYSTEM TEST WITH ALDI REPRESENTATIVE AT TIME OF PUNCH LIST.



LDILLIEN ARCHITECTURE
American Institute of Architects
310 MILLS AVE. GREENVILLE, SC 28605
864.242.9881
plans@ldillien.com
© 2018 NARRAMORE ASSOCIATES, INC.
COPYRIGHT PROTECTED BY FEDERAL LAW



1597 DRY POND RD.
JEFFERSON, GA 30549
706.387.7722
FAX: 706.387.7701

ALDI FOOD STORE # 61
2589 Spring Road
Smyrna, GA 30080

REVISIONS

PROJECT DATA
V1.07 100x155 LW Expansion
PROJECT NUMBER
18412
ISSUE DATE
10-25-18

ALDI FOOD STORE #61
Smyrna, GA



E-201

ELECTRICAL
POWER PLAN

Order Plans @