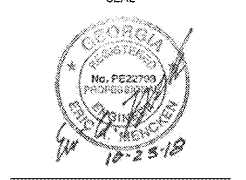




310 MILLS AVE. GREENVILLE, SC 28605
 864.242.9881
 plans@narramore.net
 © 2018 NARRAMORE ASSOCIATES, INC.
 COPYRIGHT PROTECTED BY FEDERAL LAW



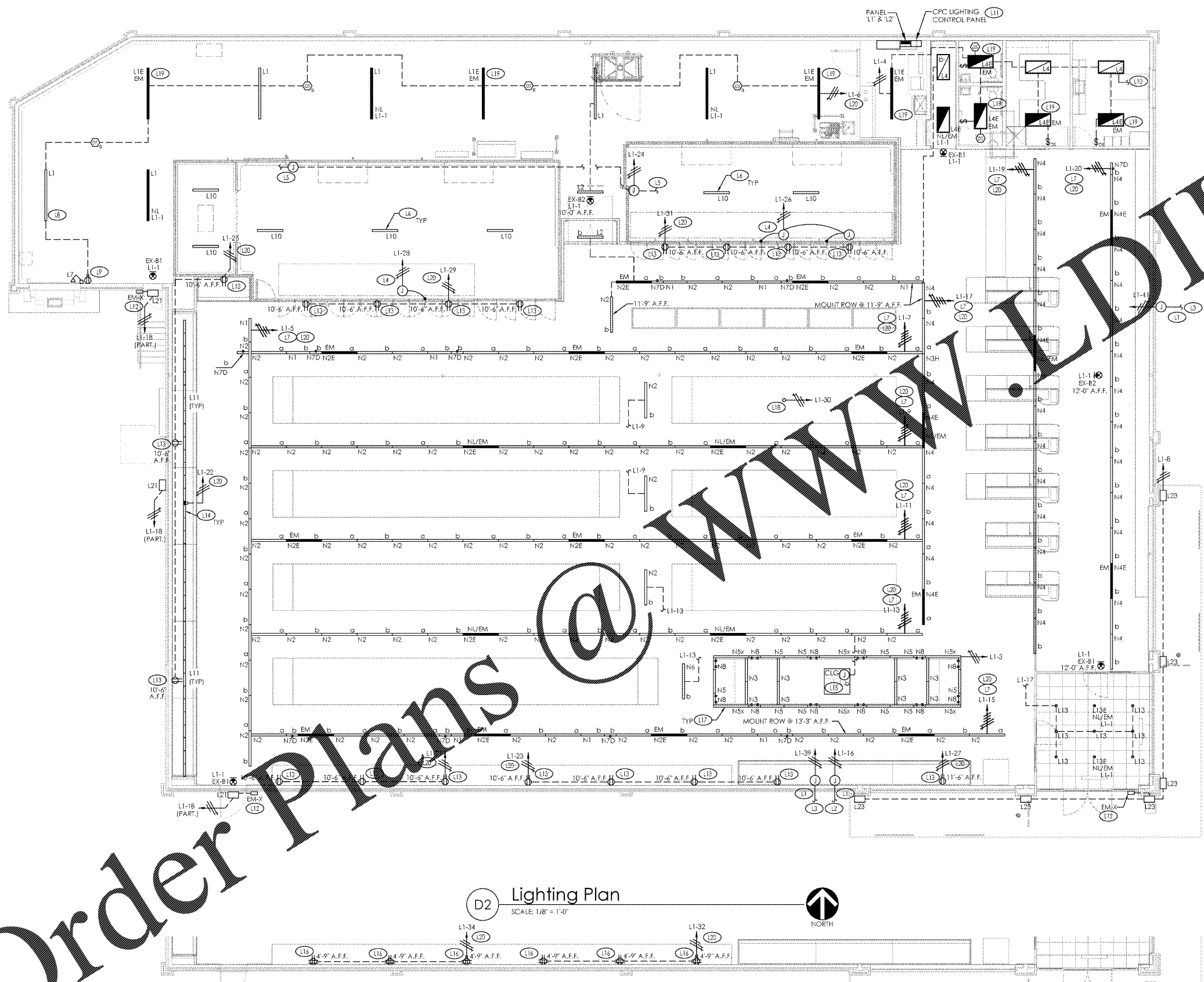
GENERAL LIGHTING NOTES:

1. ALL HEIGHT DIMENSIONS (e.g. +8'-6") ARE FROM THE FINISHED FLOOR TO THE CENTERLINE OF THE DEVICE.
2. REFER TO ARCHITECTURAL REFLECTED CEILING PLAN FOR COORDINATION OF LUMINAIRES WITH CEILING GRID.
3. REFER TO SHEET E-001 FOR THE ELECTRICAL MATERIAL LIST AND GENERAL INSTALLATION NOTES.
4. REFER TO DETAIL D1/E-102 FOR LIGHTING CONTROL AND WIRING DIAGRAM.
5. REFER TO SHEET E-401 FOR SCHEDULE OF CIRCUITS FOR PANEL 'L'.
6. REFER TO DRAWINGS E-102 FOR LIGHTING LUMINAIRE SCHEDULE.
7. IN AREAS WHERE NO CEILING IS INSTALLED, CONDUIT SHALL BE RUN BELOW ROOF DECK AT BOTTOM OF UPPER CHORD OF ROOF JOISTS.
8. EXIT LIGHTING FIXTURES SHALL BE CONNECTED TO THE EXIT LIGHTING BRANCH CIRCUIT L1-1. FIXTURES SHALL NOT BE SWITCHED.
9. EMERGENCY FIXTURES (EM) HAVE EMERGENCY BATTERY BACKUP FACTORY INSTALLED. VERIFY FIXTURE COUNTS AND PLACEMENT OF EMERGENCY FIXTURES PRIOR TO INSTALLATION. NOTIFY AIA REP OF ANY DISCREPANCIES.

LIGHTING PLAN KEYNOTES:

- (L1) REUSE CONDUIT FROM PANEL TO EXTERIOR BUILDING SITE LIGHTING AND SIGN. WIRING BELOW LAB. MINIMUM 1 1/2" CONDUIT SHALL BE USED AND CONDUIT SHALL HAVE PROPER LISTINGS FOR LOCATION ACCORDING TO ALL LOCAL CODES AND CURRENT EDITION OF N.E.C. REFER TO KEYNOTES L2 AND L3.
- (L2) REUSE EXISTING WIRING AND CIRCUIT TO MONUMENT/PYLON OR BUILDING SIGN. BACKLIGHTING AT SIGN TO BE CHANGED OUT TO LED. REUSE EXISTING SIGN. REUSE EXISTING SIGN TO BE CHANGED OUT TO LED. REUSE EXISTING SIGN. REUSE EXISTING SIGN LOCATION INTO BUILDING.
- (L3) PARKING SITE LIGHTING IS TO BE CHANGED OUT TO LED FIXTURES. REUSE EXISTING POLES. WIRING AND CIRCUITS TO NEW PARKING LOT LUMINAIRES AT EXISTING LOCATIONS. REUSE EXISTING ENTRANCE LOCATION INTO BUILDING. SOME CIRCUITS MAY BE COMBINED AT PANEL TO ACCOMMODATE NEW BREAKERS FOR NEW CIRCUITS REQUIRED AS PART OF THIS RENOVATION. REFER TO PANEL SCHEDULES.
- (L4) VERIFY LOCATION OF CONNECTION TO DOOR LIGHTS WITH REFRIGERATION CONTRACTOR.
- (L5) VERIFY LOCATION OF JUNCTION BOX WITH REFRIGERATION CONTRACTOR. CONDUIT AND WIRING CONNECTIONS AND INSTALLATION OF LUMINAIRES INSIDE COOLER AND FREEZER BY REFRIGERATION CONTRACTOR. REFER TO KEYNOTE L6.
- (L6) FIXTURES SHOWN IN WALK-IN COOLER AND FREEZER SHALL BE FURNISHED BY ELECTRICAL CONTRACTOR AND TURNED OVER TO REFRIGERATION CONTRACTOR FOR INSTALLATION. OCCUPANCY SENSORS FURNISHED AND INSTALLED BY REFRIGERATION CONTRACTOR.
- (L7) REFER TO INSTALLATION AND WIRING GUIDE PROVIDED BY NORDEON LIGHTING FOR SALES AREA TRUNKING. EACH TRUNK FOR THE MAIN STORE AISLES IS SERVED BY THREE (3) CIRCUITS ORIGINATING FROM THE SAME BRANCH CIRCUIT. -CONTROL CIRCUIT #1 IS FROM "STOCKING" CONTACTORS OPERATING FIXTURES THAT HAVE LETTER DESIGNATION 'a' -CONTROL CIRCUIT #2 IS FROM "SALES" CONTACTORS OPERATING FIXTURES THAT HAVE LETTER DESIGNATION 'b' -CIRCUIT #3 IS UN-SWITCHED AND REFERENCE VOLTAGE FOR EMERGENCY FIXTURES AND CONNECTED SUCH THAT IN THE EVENT OF A LOSS OF NORMAL POWER THE EMERGENCY FIXTURE ILLUMINATES. NIGHT LIGHTING FIXTURES (NL) FACTORY WIRING FOR 24/7 ILLUMINATION.
- (L8) INSTALL LUMINAIRES. CONDUIT AND WIRING TO CLEAR OVERHEAD DOOR IN THE OPEN POSITION.
- (L9) RECEPTACLE FOR DOCK LIGHT SHALL BE SWITCHED WITH BACKROOM LIGHTS. PROVIDE WOOD BLOCKING BETWEEN STUDS TO SECURELY MOUNT FIXTURE.
- (L10) EXTEND CIRCUIT TO EXHAUST FAN EF-1. REFER TO E-301 FOR CONTINUATION.
- (L11) CPC SYSTEM REFER TO DETAIL D1/E-102 FOR LIGHTING CONTROL DIAGRAM.
- (L12) PROVIDE EXTERIOR EMERGENCY FIXTURE NEAR DOOR FOR EXIT DISCHARGE LIGHTING. REFER TO ARCHITECTURAL ELEVATIONS FOR LOCATIONS.
- (L13) PROVIDE DUPLEX RECEPTACLES FOR LED BACKLIT GRAPHIC FRAMES. COORDINATE RECEPTACLE LOCATIONS WITH SIGN VENDOR. G.C. AND ALDI REP. PRIOR TO ROUGH-IN. RECEPTACLES SHALL BE CONNECTED TO CIRCUITS AS INDICATED. REFER TO LIGHTING CONTROL DIAGRAM D1/E-102.
- (L14) INSTALL 2" LOW-PROFILE LINEAR COVE FIXTURES FACING UP TO LIGHT BACK WALL GRAPHICS ON TOP OF MDL. SECURE FIXTURES TO GC INSTALLED LIGHT GAUGE HAT CHANNEL WITH FURNISHED MOUNTING CLIPS. REFER TO ARCHITECTURAL SECTION DRAWINGS FOR FIXTURE PLACEMENT. VERIFY QUANTITY OF FIXTURES REQUIRED FOR CONTINUOUS ROW WALL TO WALL.
- (L15) PROVIDE CONNECTION OF PRE-FABRICATED HANGING LIGHTED SIGNS TO SALES FLOOR LIGHTING BRANCH CIRCUIT AS INDICATED. COORDINATE LOCATION OF JUNCTION BOX WITH SIGN INSTALLER PRIOR TO ROUGH-IN.
- (L16) PROVIDE RECEPTACLES AS NOTED FOR GONDOLA ACCENT LIGHTING. REFER TO ARCHITECTURAL INTERIOR ELEVATIONS FOR RECEPTACLE LOCATIONS AND COORDINATE WITH G.C. PRIOR TO ROUGH-IN. REFER TO LIGHTING CONTROL DIAGRAM D1/E-102.
- (L17) MOUNT PRODUCE LIGHTING ASSEMBLY AT 12'-0" A.F.F. TO BUILDING STRUCTURE PER MANUFACTURERS INSTRUCTIONS USING SAMMYS SCREW AND AIRCRAFT CABLE SUPPORT KIT PROVIDED WITH FIXTURES. LIGHTING ASSEMBLY SHALL BE MOUNTED TO AVOID ALL OBSTRUCTIONS. REFER TO REFLECTED CEILING PLAN FOR LOCATIONS.
- (L18) LOCATE POWER POLE AND RACEWAY FOR GONDOLA LIGHTING. REFER TO DETAIL B1/E-502 FOR INSTALLATION REQUIREMENTS. CIRCUIT WITH SPOT MERCHANDISER LIGHTING CIRCUIT L1-30.
- (L19) EMERGENCY FIXTURE WIRED FOR SWITCHED OPERATION.
- (L20) ROUTE #10 AWG CONDUCTORS FOR ENTIRE LENGTH OF CIRCUIT.

ALL CONTROLLED RECEPTACLES SHALL BE PERMANENTLY LABELED WITH THIS SYMBOL. REFER TO NEC SECTION 406.3(E).



D2 Lighting Plan
 SCALE: 1/8" = 1'-0"

D1 Partial Plan (Gondola Lighting Receptacles)
 SCALE: 1/8" = 1'-0"

Order Plans @

WWW.DIPLINE.COM

ALDI FOOD STORE # 61
 2589 Spring Road
 Smyrna, GA 30080

REVISIONS

PROJECT DATA
 V1.07 100x155 LW Expansion
PROJECT NUMBER
 18412
ISSUE DATE
 10-25-18

ALDI FOOD STORE #61
 Smyrna, GA

DEVITA
 ATLANTA • CHARLOTTE • GREENVILLE • RICHMOND
 877.4.DEVITA • corp@devitainc.com
 Devita & Associates, Inc. Project: 18102-35
 Drawn By: SMD Checked By: RAG

E-101
 LIGHTING PLAN