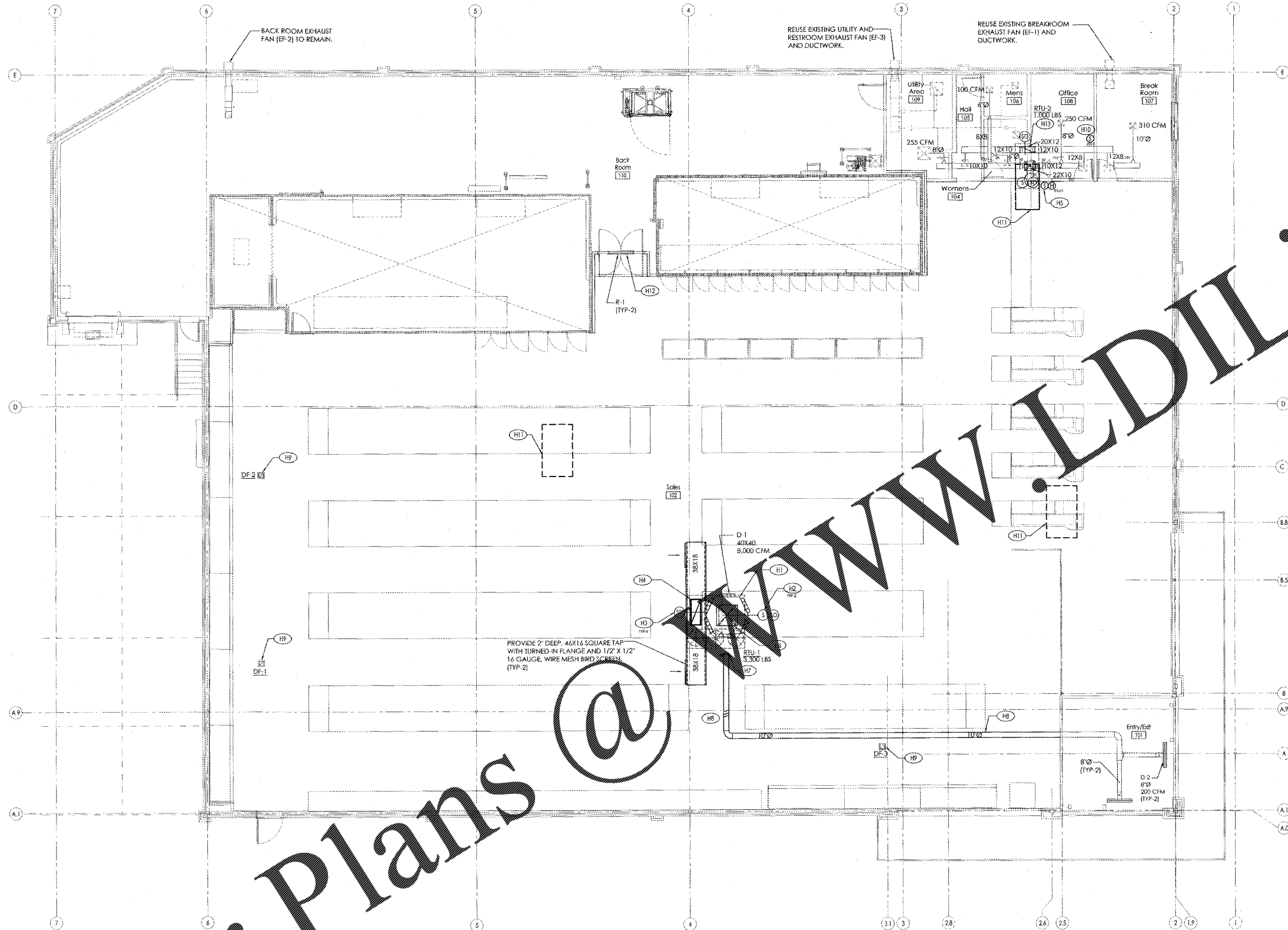


Order Plans @



1 HVAC Construction Plan  
SCALE: 1/8" = 1'-0"  
NORTH

HVAC PLAN KEYNOTES:

- (H1) MOUNT 6-WAY SUPPLY DIFFUSER TIGHT TO BOTTOM OF ROOF JOIST. SUPPORT FROM ROOF STRUCTURE WITH THREADED ROD. ADJUST THE THROW FOR EACH LOUVER TO BE 15" DOWNWARD FROM THE HORIZONTAL POSITION.
- (H2) DISCHARGE AIR TEMPERATURE SENSOR. SENSORS, WIRING AND CONDUIT SHALL BE PROVIDED AND INSTALLED BY OTHERS.
- (H3) DUCT MOUNTED SMOKE DETECTOR.
- (H4) 50X20 LINED RETURN UP TO RTU-1. TRANSITION TO RTU RETURN CONNECTION.
- (H5) TEMPERATURE & HUMIDITY SENSORS MOUNTED ON WALL AT 5'-2" AFF TO THE BOTTOM OF EACH SENSOR. SENSORS, WIRING AND CONDUIT SHALL BE PROVIDED AND INSTALLED BY OTHERS.
- (H6) 40X40 LINED SUPPLY UP TO RTU-1. TRANSITION TO RTU SUPPLY CONNECTION.
- (H7) CONNECT 10" SUPPLY TO 40X40 SUPPLY AIR RISER. PROVIDE VOLUME DAMPER AT TAKEOFF.
- (H8) RUN 10" DUCT TIGHT TO ROOF DECK THROUGH JOISTS.
- (H9) DESTRATIFICATION FAN SUPPORTED FROM BUILDING STRUCTURE. MOUNT 1'-0" BELOW ROOF DECK. MAKE/MODEL: AIR-ROW F-18.
- (H10) TEMPERATURE SENSOR MOUNTED ON WALL. MOUNT SENSOR OUT OF SUPPLY AIR STREAM AT 5'-0" AFF. SENSORS, WIRING AND CONDUIT SHALL BE PROVIDED AND INSTALLED BY OTHERS.
- (H11) REMOVE EXISTING RTU. CAP & SEAL WEATHER TIGHT. PROVIDE BURGLAR BARS AND INSULATE EXISTING ROOF CURB.
- (H12) 24X12 TRANSFER MOUNTED AT 8'-10" AFF.
- (H13) REPLACE EXISTING OFFICE RTU (RTU-2) WITH NEW AT LOCATION INDICATED. PROVIDE NEW DUCT AS SHOWN AND CONNECT NEW DUCT TO EXISTING. REUSE EXISTING DUCTWORK AND AIR DEVICES WHERE FEASIBLE. FIELD VERIFY EXACT LOCATION AND SIZE.

GENERAL HVAC NOTES:

1. COORDINATE DIFFUSER LOCATIONS WITH REFLECTED CEILING PLAN INCLUDING LIGHTS AND SPRINKLER HEAD LAYOUTS.
2. PROVIDE DUCT MOUNTED SMOKE DETECTORS IN SUPPLY AND RETURN DUCTS AS INDICATED ON THE FLOOR PLAN. DUCT DETECTORS SHALL BE PROVIDED AND INSTALLED IN THE DUCTWORK BY THE MECHANICAL CONTRACTOR AND WIRED BY THE ELECTRICAL CONTRACTOR TO THE H201 FOR DETECTOR SPECIFICATION. NO EXCEPTIONS.
3. COORDINATE 4-WAY SUPPLY DIFFUSER MOUNTING HEIGHT AND LOCATION WITH STRUCTURAL STEEL AND LIGHTS. MOUNT SUPPLY DIFFUSER AS HIGH AS POSSIBLE.
4. TEMPERATURE AND HUMIDITY SENSORS ARE SHOWN FOR REFERENCE ONLY. AN ENERGY MANAGEMENT SYSTEM BEING PROVIDED. BY SIEMENS UNDER A SEPARATE CONTRACT WITH THE OWNER. THE EMS SHALL BE PROVIDED BY THE REFRIGERATION CONTRACTOR AND THE MECHANICAL CONTRACTOR SHALL COORDINATE WORK WITH THE ALDI PROJECT MANAGER AND REFRIGERATION CONTRACTOR.
5. DUCT DIMENSIONS REPRESENT FREE AREA.  
ALL 90 DEGREE ELBOWS & FITTINGS TO BE PROVIDED WITH TURNING VANES.  
ALL ROUND DUCTWORK SHALL BE SPIRAL ONLY.
6. PROVIDE VOLUME DAMPERS AT ALL RETURN REGISTER TAKEOFFS.
9. MAXIMUM FLEX DUCT LENGTH SHALL BE 4FT.
10. FIELD VERIFY ALL NEW EQUIPMENT AND SCOPE OF WORK PRIOR TO BIDDING. NOTIFY OWNER IN WRITING 48 HOURS PRIOR TO BID DATE OF ANY QUESTIONS ON SCOPE OF WORK OR CONTRACT DOCUMENTS.
11. PROVIDE 1 1/2" PVC CONDENSATE DRAIN & P-TRAP FOR ALL ROOFTOP UNITS.
12. PROVIDE ACOUSTICAL INSULATION INSIDE ROOFTOP UNIT CURB FOR SOUND ATTENUATION. (TYPICAL)
13. INSULATE ALL DUCTWORK CONCEALED ABOVE A CEILING AND EXPOSED IN BACKROOM AND SALES. SEE SPECIFICATION SECTION 230700 - HVAC INSULATION FOR DETAILS.
14. SIEMENS INDUSTRIES, INC. IS PROVIDING AN ENERGY MANAGEMENT SYSTEM UNDER A SEPARATE CONTRACT WITH THE OWNER. THE MECHANICAL CONTRACTOR SHALL COORDINATE DIRECTLY WITH THE SIEMENS PROJECT MANAGER. CONTACT INFO: AARON GOOD - PH: 512-421-4215.



American Institute of Architects  
310 MILLS AVE. GREENVILLE, SC 29605  
864.242.9881  
plans@narramore.net  
© 2018 NARRAMORE ASSOCIATES, INC.  
COPYRIGHT PROTECTED BY FEDERAL LAW



1597 DRY POND RD.  
JEFFERSON, GA 30549  
706.387.7722  
FAX: 706.387.7701

ALDI FOOD STORE # 61  
2589 Spring Road  
Smyrna, GA 30080

REVISIONS

PROJECT DATA  
V1.07 100x155 LW Expansion  
PROJECT NUMBER  
18412  
ISSUE DATE  
10-25-18

ALDI FOOD STORE #61  
Smyrna, GA



H-101  
HVAC PLAN  
18230-11/17