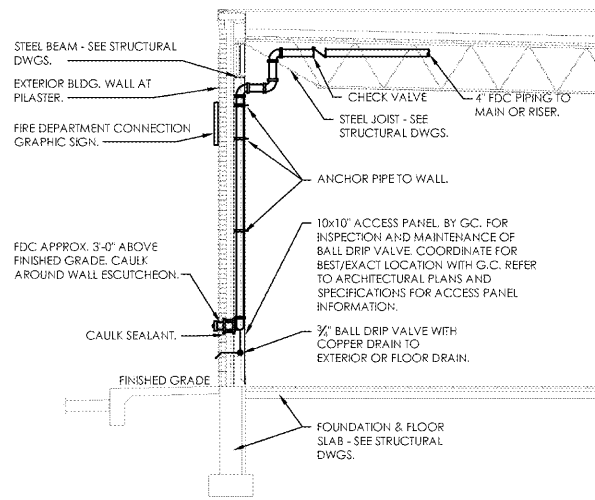
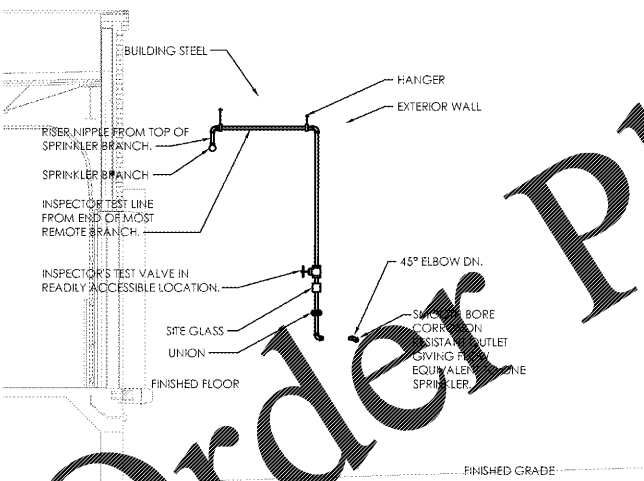


FIRE PROTECTION LEGEND

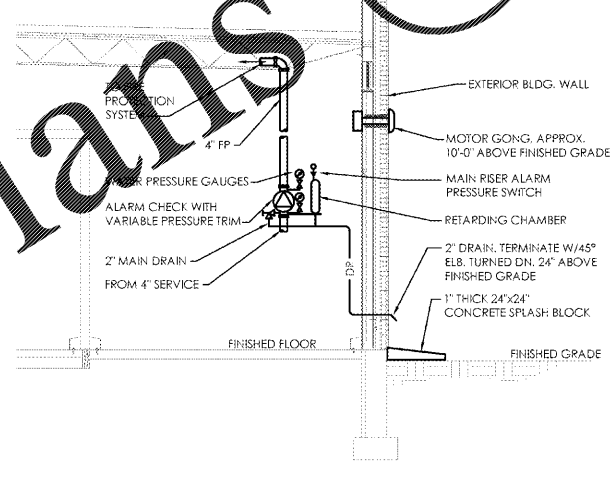
SYMBOL	ABBREV	ITEM	SYMBOL	ABBREV	ITEM
—	FP	FIRE PROTECTION MAIN	—		REDUCER
⊙	A	SPRINKLER HEAD - RECESSED PENDANT	—		CHECK VALVE
⊙	A,B	SPRINKLER HEAD - UPRIGHT	—		FLOW SWITCH
⊙	DP-A	SPRINKLER HEAD - DRY PENDENT	—		TAMPER SWITCH
⊙		FIRE RISER WITH VALVING	—		TEE - UP
			—		TEE - DOWN
			—		TEE
			—		ELBOW - UP
			—		ELBOW DOWN
			—		ELBOW



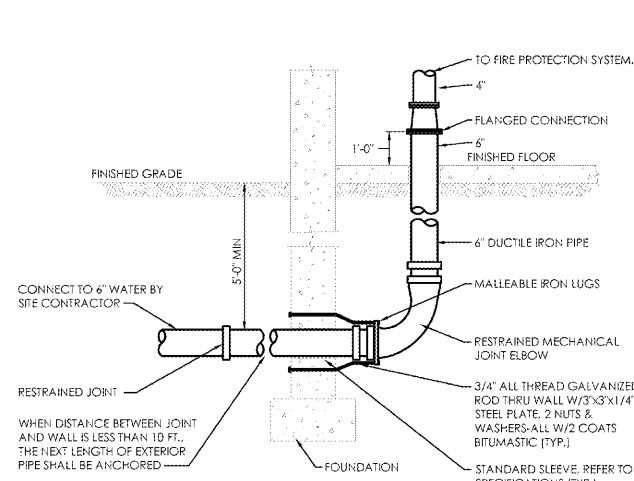
D2 Fire Department Connection Detail
SCALE: N.T.S.



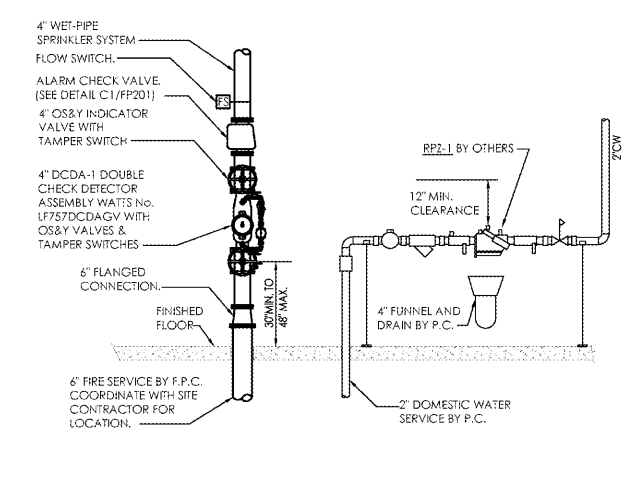
D1 Inspector's Test Connection Detail
SCALE: N.T.S.



C1 Fire Protection Alarm Check Detail
SCALE: N.T.S.



B1 Fire Service Lead-In Detail
SCALE: N.T.S.



A1 Fire Protection Riser Detail
SCALE: N.T.S.

GENERAL FIRE PROTECTION NOTES:

- PROVIDE ALL WORK IN COMPLIANCE WITH ALL LOCAL, STATE AND FEDERAL CODES. COORDINATE ALL WORK WITH LOCAL FIRE MARSHAL.
- SPRINKLER CONTRACTOR SHALL OBTAIN AND PAY FOR ALL STATE AND LOCAL PERMITS REQUIRED FOR HIS WORK, AND SCHEDULE ANY INSPECTIONS REQUIRED BY GOVERNING RULES AND REGULATIONS.
- PROVIDE FULL SPRINKLER COVERAGE FOR ALL SPACES IN COMPLIANCE WITH LOCAL STATE AND FEDERAL CODES: NFPA-13 AND OWNER'S INSURANCE CARRIER/UNDERWRITER.
- COORDINATE FIRE PROTECTION SYSTEM WITH ALL OTHER TRADES, BUILDING CONDITIONS, ETC.
- ALL PIPING SHALL BE PITCHED BACK TO MAIN WITH SPRINKLER HEADS AS HIGH AS POSSIBLE IN SPACES WITH NO CEILINGS (EXPOSED ROOF STRUCTURE).
- FIRE PROTECTION CONTRACTOR SHALL PROVIDE DRY PIPE PENDANT HEADS WITH HEAD GUARDS IN THE FREEZER AND COOLERS. FREEZER AND COOLER INSTALLER SHALL BE RESPONSIBLE FOR SEALING THE SPRINKLER HEAD PENETRATION INTO THE INSULATED BOX.
- POSITION HEADS TO MISS LIGHT FIXTURES IN COOLER AND FREEZER AND TO BE LOCATED NO CLOSER THAN 24" TO REFRIGERATION COILS HUNG FROM CEILING OF COOLER/FREEZER OR NO CLOSER THAN 48" TO THE BACK WALL OF THE COOLER/FREEZER. (COORDINATE WITH REFRIGERATION CONTRACTOR).
- FOR ALL AREAS WITH CEILING GRIDS, PROVIDE SPRINKLERS IN THE CENTER OR QUARTER OF CEILING TILES AND SHALL BE WHITE FINISH. REFER TO ARCHITECTURAL PLAN FOR CEILING GRID LAYOUT.
- THE SPRINKLER/ FIRE PROTECTION CONTRACTOR SHALL HYDRAULICALLY CALCULATE COMPLETE SPRINKLER SYSTEM.**
- PROVIDE (2) EXTRA HEADS FOR EACH TYPE OF SPRINKLER HEAD AND TEMPERATURE AND ASSOCIATED WRENCHES FOR EACH HEAD STYLE FOR SPARES. PROVIDE SURFACE MOUNTED SPRINKLER HEAD/WRENCH CABINET FOR SPARE HEADS AND WRENCHES. MOUNT HEAD CABINET WITHIN UTILITY ROOM, ADJACENT TO FIRE RISER. CABINET SHALL BE EASILY ACCESSIBLE.
- FIRE PROTECTION CONTRACTOR SHALL TEST AND FLUSH PIPING.
- NOTE THAT SPRINKLER HEADS SHOWN ARE FOR REFERENCE ONLY AND THE FIRE PROTECTION CONTRACTOR SHALL DESIGN THE ENTIRE FIRE PROTECTION SYSTEM PER NFPA-13, INCLUDING ALL HEAD LOCATIONS, BRANCH PIPING, MAIN RUNS AND ASSOCIATED PIPE SIZES, HEAD LOCATIONS BY FIRE PROTECTION CONTRACTOR'S DESIGN MAY BE DIFFERENT THAN SHOWN HEREIN.
- ALL PIPING SHALL BE ROUTED AROUND ELECTRICAL AREAS WHERE POSSIBLE. IF PIPING IS OVER THE SENSITIVE AREA, DRIP PAN SHALL BE INSTALLED UNDER THE ENTIRE LENGTH OF PIPE OVER THE SENSITIVE AREA. CHANNELING WATER AWAY SO AS TO PREVENT ANY LEAKS IN THE AREA. AT THE LOWER SEGMENT OF PIPE PAN, ROUTE DRAIN TO NEAREST APPROVED RECEPTACLE WITH AN APPROVED AIR GAP PER CODE. CONTRACTOR SHALL REVIEW ALL DRAWING PRIOR TO CONSTRUCTION, AND REPORT IF THIS CONDITION EXISTS.

GENERAL FIRE PROTECTION NOTE:

- ALL WATER PIPING SHALL BE ROUTED AWAY FROM ELECTRICAL EQUIPMENT WHENEVER POSSIBLE. REFER TO FP-201 GENERAL NOTES FOR ROUTING INFORMATION.

FIRE PROTECTION PLAN KEYNOTES:

- PROVIDE 6" UNDERGROUND FIRE PROTECTION WATER SERVICE. CONNECT TO SITE PIPING. REFER TO SITE UTILITY PLANS AND COORDINATE WITH SITE CONTRACTOR.
- PROVIDE FIRE PROTECTION RISER AT 6" FP WATER SERVICE ENTRANCE. REFER TO DETAILS A1/FP-201 & C1/FP-201.
- PROVIDE SPRINKLER SUPPLY PIPING AS REQUIRED TO SERVE ENTIRE BUILDING. PROVIDE 100% SPRINKLER COVERAGE THROUGHOUT BUILDING. HYDRAULICALLY SIZE ALL PIPING.
- PROVIDE DRY-PIPE HEADS (FOR WET-PIPE SYSTEMS) WITH HEAD GUARDS AND LOCATE WITHIN COOLER AND FREEZER UNITS PER NFPA-13. PROVIDE UPRIGHT WET-PIPE HEADS ABOVE UNITS.
- PROVIDE PENDENT HEAD(S) IN CEILING AND/OR SOFFIT.
- PROVIDE UPRIGHT HEAD(S) ABOVE LAY-IN CEILING.
- PROVIDE INSPECTOR'S TEST. TERMINATE THRU WALL WITH 45° ELBOW TURNED DN. REFER TO DETAIL D1/FP-201.
- PRIOR TO SPRINKLER ROUGH-IN, COORDINATE LOCATION OF DRY PIPE HEADS WITH REFRIGERATION CONTRACTOR. ANY DRY PIPE HEAD THAT FALLS WITHIN 48" OF REFRIGERATOR SHALL BE A HIGH TEMPERATURE HEAD.
- ROUTE PIPING WITHIN BACK ROOM TO TOP TO BOTTOM OF STEEL. ROUTE ALL BRANCHES NO LOWER THAN THE TOP OF THE BOTTOM CORD OF JOISTS. ANY LINE, BRANCH OR MAIN; RUN ON THE SALES FLOOR SHALL BE NO LOWER THAN THE TOP OF THE BOTTOM CHORD OR JOIST. COORDINATE WITH HVAC AND ELECTRICAL CONTRACTOR TO MINIMIZE DEVIATIONS FROM THESE MINIMUMS.
- PROVIDE 4" FDC. REFER TO DETAIL D2/FP-201.
- ACCESS PANEL BY G.C. FOR BALL DRIP INSPECTION AND MAINTENANCE TO BE COORDINATED WITH G.C. FOR EXACT LOCATION. REFER TO DETAIL D2/FP-201.
- COORDINATE LOCATION OF SPRINKLER HEADS WITH RTU DUCT DROPS AND ASSOCIATED DUCT WORK AS REQUIRED TO MAINTAIN CODE REQUIRED FIRE PROTECTION COVERAGE.
- IF UPRIGHT HEAD(S) ARE OBSTRUCTED BY OVERHEAD DOOR WHEN DOOR IS OPEN, PROVIDE ADDITIONAL HEAD(S) BELOW DOOR TO PROVIDE PROPER COVERAGE. LOCATION MUST BE IN ACCORDANCE WITH LOCAL OR GOVERNING CODE.
- PROVIDE 2" DRAIN OFF MAIN. REFER TO C1/FP-201 FOR DETAIL.
- DO NOT ROUTE ANY FIRE PROTECTION PIPING OVER ELECTRICAL GEAR. COORDINATE NEARBY WORK WITH G.C.



310 MILLS AVE., GREENVILLE, SC 29605
864.242.9881
plans@narramore.net
© 2018 NARRAMORE ASSOCIATES, INC.
COPYRIGHT PROTECTED BY FEDERAL LAW
SEAL

FOR REFERENCE ONLY



1597 DRY POND RD.
JEFFERSON, GA 30549
706.387.7722
FAX: 706.387.7701

ALDI FOOD STORE #61
Picard Engineering
Engineering, Consulting and Design
P.O. Box 23791
3159 Wilton Rd South, 207
Roanoke, New York
Tel: 845.440.0000
Fax: 845.440.0004
Email: info@picardeng.com
2589 Spruce Head Rd
Smyrna, GA 30080

REVISIONS

PROJECT DATA
V1.07 100x155 LW Expansion
PROJECT NUMBER
18412
ISSUE DATE
09-10-18

ALDI FOOD STORE #61
Smyrna, GA

FP-201

FIRE PROTECTION
LEGEND AND DETAILS