

THIS PLAN IS NOT AN ENGINEERED PLAN - IT IS FOR REFERENCE ONLY THE AWARDED SUB-CONTRACTOR MUST INCLUDE ENGINEERED PLANS SUBMITTED FOR PERMIT OF THE WORK.

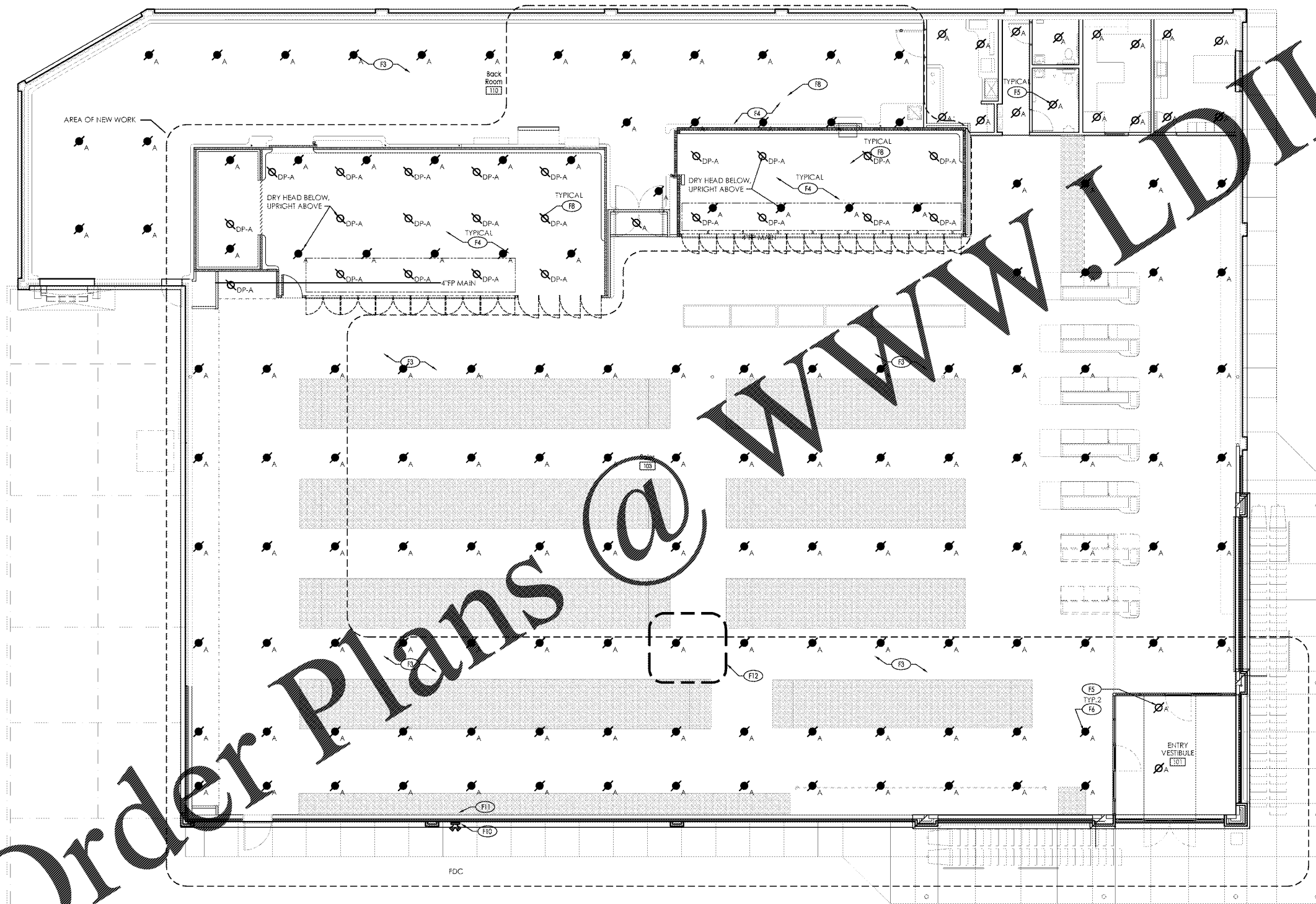
SPRINKLER HEAD SCHEDULE						
SYMBOL	DESCRIPTION	ORIFICE SIZE	"K" VALUE	TEMP. ° F.	FINISH	NOTES
⊘ _A	PENDANT - TYCO TY-FRB (TY3231), OR APPROVED EQUAL	1/2"	5.60	155	WHITE	1,2,3
⊘ _B	UPRIGHT - TYCO TY-FRB (TY3131), OR APPROVED EQUAL	1/2"	5.60	155	CHROME	1
⊘ _B	UPRIGHT - TYCO TY-FRB (TY3131), OR APPROVED EQUAL	1/2"	5.60	200	CHROME	1
⊘ _{DP-A}	PENDANT DRY HEAD- DS-1 (TY3255), OR EQUAL	1/2"	5.60	155	CHROME	1,4

NOTES:
 1. STANDARD RESPONSE
 2. PROVIDE RECESSED ESCUTCHEON (FINISH: WHITE)
 3. PROVIDE 1" STAINLESS STEEL CORRUGATED FLEXIBLE TUBING TO PENDANT SPRINKLER HEAD ABOVE CEILING.
 4. PROVIDE SPRINKLER HEAD GUARD.



310 MILLS AVE. GREENVILLE, SC 29605
 864.242.9881
 plans@narramore.net
 © 2018 NARRAMORE ASSOCIATES, INC.
 COPYRIGHT PROTECTED BY FEDERAL LAW

SEAL



GENERAL FIRE PROTECTION NOTE:

1. ALL WATER PIPING SHALL BE ROUTED AWAY FROM ELECTRICAL EQUIPMENT WHENEVER POSSIBLE. REFER TO FP-201 GENERAL NOTES FOR ROUTING INFORMATION.

FIRE PROTECTION PLAN KEYNOTES:

- F1 PROVIDE 6" UNDERGROUND FIRE PROTECTION: WATER SERVICE, CONNECT TO SITE PIPING. REFER TO SITE UTILITY PLANS AND COORDINATE WITH SITE CONTRACTOR.
- F2 PROVIDE FIRE PROTECTION RISER AT 6" FP WATER SERVICE ENTRANCE. REFER TO DETAILS A1/FP-201 & C1/FP-201.
- F3 PROVIDE SPRINKLER SUPPLY PIPING AS REQUIRED TO SERVE ENTIRE BUILDING. PROVIDE 100% SPRINKLER COVERAGE THROUGHOUT BUILDING. HYDRAULICALLY SIZE ALL PIPING.
- F4 PROVIDE DRY-PIPE HEADS (FOR WET-PIPE SYSTEMS) WITH HEAD GUARDS AND LOCATE WITHIN COOLER AND FREEZER UNITS PER NFPA-13. PROVIDE UPRIGHT WET-PIPE HEADS ABOVE UNITS.
- F5 PROVIDE PENDANT HEAD(S) IN CEILING AND/OR SOFFIT.
- F6 PROVIDE UPRIGHT HEAD(S) ABOVE LAY-IN CEILING BELOW.
- F7 PROVIDE INSPECTOR'S TEST. TERMINATE THRU WALL WITH 45° ELBOW TURNED ON. REFER TO DETAIL D1/FP-201.
- F8 PRIOR TO SPRINKLER ROUGH-IN, COORDINATE LOCATION OF DRY PIPE HEADS WITH REFRIGERATION CONTRACTOR. ANY DRY PIPE HEAD THAT FALLS WITHIN 48" OF EVAPORATOR SHALL BE A HIGH TEMPERATURE HEAD.
- F9 ROUTE MAIN WITHIN BACK ROOM TIGHT TO BOTTOM OF STEEL. ROUTE ALL BRANCH LINES NO LOWER THAN THE TOP OF THE BOTTOM CHORD OF JOISTS. ANY LINE, BRANCH OR MAIN, RUN ON THE SALES FLOOR SHALL BE NO LOWER THAN THE TOP OF THE BOTTOM CHORD OR JOIST. COORDINATE WITH HVAC AND ELECTRICAL CONTRACTOR TO MINIMIZE DEVIATIONS FROM THESE MINIMUMS.
- F10 EXISTING REMOTE 4" FDC.
- F11 ACCESS PANEL BY G.C. FOR BALL DRIP INSPECTION AND MAINTENANCE TO BE COORDINATED WITH G.C. FOR EXACT LOCATION. REFER TO DETAIL B2/FP-201
- F12 COORDINATE LOCATION OF SPRINKLER HEADS WITH RTU DUCT DROPS AND ASSOCIATED DUCT WORK AS REQUIRED TO MAINTAIN CODE REQUIRED FIRE PROTECTION COVERAGE.
- F13 IF UPRIGHT HEAD(S) ARE OBSTRUCTED BY OVERHEAD DOOR WHEN DOOR IS OPEN, PROVIDE ADDITIONAL HEAD(S) BELOW DOOR TO PROVIDE PROPER COVERAGE. LOCATION MUST BE IN ACCORDANCE WITH LOCAL OR GOVERNING CODE.
- F14 PROVIDE 2" DRAIN OFF MAIN. REFER TO C1/FP-201 FOR DETAIL.
- F15 DO NOT ROUTE ANY FIRE PROTECTION PIPING OVER ELECTRICAL GEAR. COORDINATE NEARBY WORK WITH G.C..

Building Sprinkler Information

OWNER: ALDI, Inc.
 Street Name
 Any Town, State Zip Code

LOCATION: Aldi - Inc.
 Street Name
 Any Town, State Zip Code

OCCUPANCY: Mercantile

HAZARD CLASSIFICATION: Store - Ordinary Hazard Group 2

Sprinkler System Information

SPRINKLER SYSTEM TYPE: Wet-Pipe

MAX AREA / SPRINKLER: 130 SQ.FT.

FLOW DENSITY: 0.2 GPM/SQ.FT.

AREA OF COVERAGE: 1,500 SQ.FT.
 INSIDE HOSE DEMAND: N/A
 OUTSIDE HOSE DEMAND: 250 GPM

Water Supply Information:

FIRE PROTECTION CONTRACTOR IS RESPONSIBLE FOR OBTAINING HYDRANT FLOW TEST DATA FOR HYDRAULIC CALCULATIONS

FOR REFERENCE ONLY



1597 DRY POND RD.
 JEFFERSON, GA 30549
 706.387.7722
 FAX: 706.387.7701

ALDI FOOD STORE # 61

2589 Spring Road
 Smyrna, GA 30080

REVISIONS

PROJECT DATA
 V1.07 100x155 LW Expansion
PROJECT NUMBER
 18412
ISSUE DATE
 09-10-18

ALDI FOOD STORE #61
 Smyrna, GA

FP-101

FIRE PROTECTION FLOOR PLAN

Order Plans @

D1 Fire Protection Floor Plan
 SCALE: 1/8" = 1'-0"

