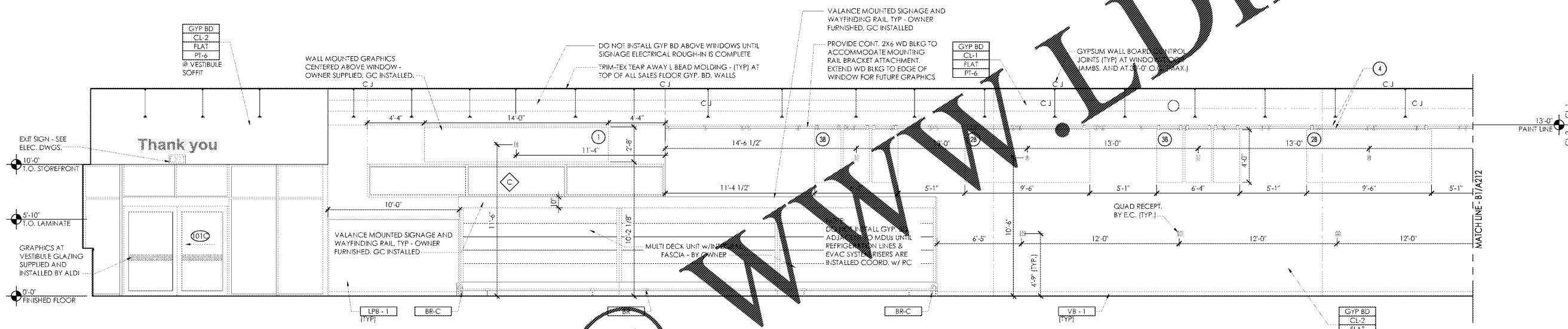
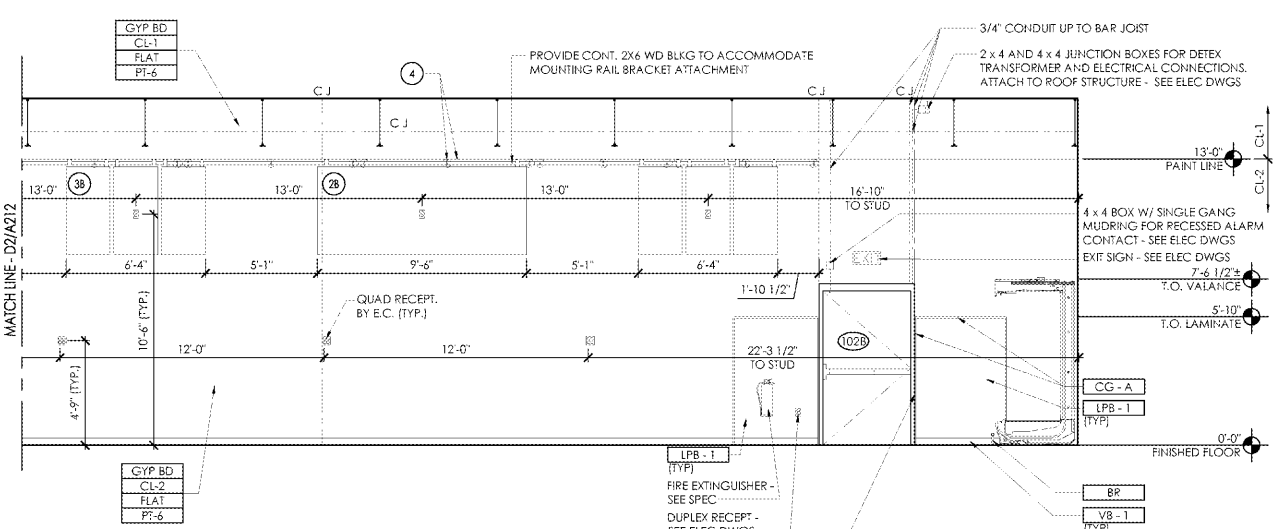


Retail Interior Elevation
 C3
 SCALE: 1/4" = 1'-0"



Retail Interior Elevation
 D2
 SCALE: 1/4" = 1'-0"

KEY	KEY DESCRIPTION	MANUFACTURER	NOTES
1	NOT USED		
2	ILLUMINATED WALL MTD. GRAPHIC W/ SIMULATED RAIL MOUNT	OWNER FURNISHED - GC INSTALLED	24" 102" W x 48" H - COOLER/FREEZER WALL
3	TRIPLE PANEL RAIL MTD. GRAPHIC (TRIPYCH)	OWNER FURNISHED - GC INSTALLED	54" 42" W x 42" H PANELS - 70" TOTAL WIDTH
4	MOUNTING RAIL	OWNER FURNISHED - GC INSTALLED	22" 24" W x 48" H PANELS - 76" TOTAL WIDTH
5	ILLUMINATED WALL MTD. GRAPHIC	OWNER FURNISHED - GC INSTALLED	ALIGN TOP OF RAIL BRACKETS W/ PAINT LINE. EXTEND WD BLKG ENTIRE LENGTH OF MOUNTING RAIL U.N.O.
6	WALL MTD. GRAPHIC	OWNER FURNISHED - GC INSTALLED	102" W x 42" H - BACK WALL ABOVE MDU; 192" W x 30" H - BACK WALL ABOVE MDU; INSTALL OVER TILE



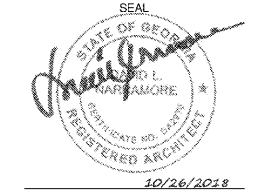
Retail Interior Elevation
 B1
 SCALE: 1/4" = 1'-0"

GENERAL NOTES:

- ALL WALLS TO BE CLEANED AFTER PAINTING OF CEILING TO REMOVE DRYFALL PAINT RESIDUE. COMPLETE CLEANING PRIOR TO INSTALLATION OF OWNER FURNISHED GRAPHICS PACKAGE.
- REFER TO DRAWING A-603 FOR ALL FINISH CALLOUTS.
- GC TO INSTALL OWNER FURNISHED INTERIOR GRAPHICS AND MILLWORK PACKAGE. REFER TO INSTALLATION INSTRUCTIONS AND CUT SHEETS POSTED TO WWW.SHARENOCLO.COM FOR INTERIOR GRAPHICS. VENDOR INFO > SBTI INTERIOR GRAPHICS; MILLWORK; VENDOR INFO > SBTI CABINETS; FINIC VENDOR INFO > REPTI.
- COORDINATE LOCATION OF ALL CONTROL JOINTS WITH GRAPHICS PACKAGE TO MINIMIZE INTERFERENCE WITH GRAPHICS.
- ALL WINDOW AREA WALLS TO BE FREE OF ABANDONED DEVICE BOXES AND NO BLANK COVER PLATES ARE TO BE EXPOSED.
- COORDINATE LOCATION OF REFRIGERATION LINES WITH REFRIGERATION CONTRACTOR BEFORE ENCLOSING WALL CAVITY.



310 MILLS AVE. GREENVILLE, SC 29605
 864.242.9881
 plans@narramore.net
 © 2018 NARRAMORE ASSOCIATES, INC.
 COPYRIGHT PROTECTED BY FEDERAL LAW



1597 DRY POND RD.
 JEFFERSON, GA 30549
 706.387.7722
 FAX: 706.387.7701

ALDI FOOD STORE # 61
 2589 Spring Road
 Smyrna, GA 30080

REVISIONS

PROJECT DATA
 V1.07 100x155 LW Expansion
PROJECT NUMBER
 18412
ISSUE DATE
 09-10-18

ALDI FOOD STORE #61
 Smyrna, GA

A-212

INTERIOR ELEVATIONS