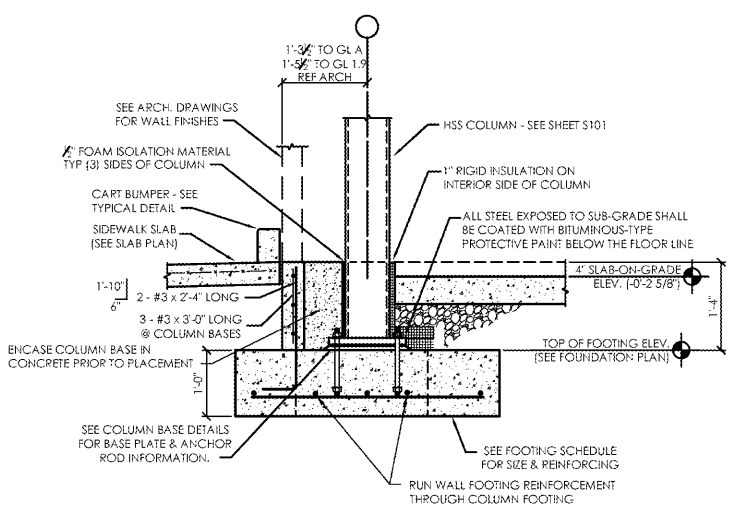
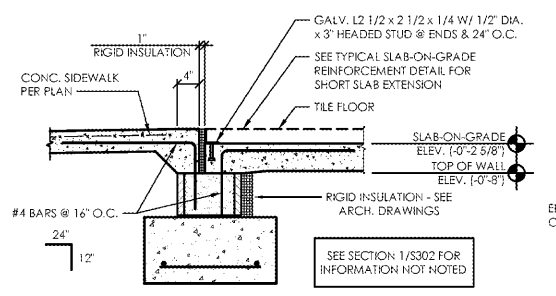




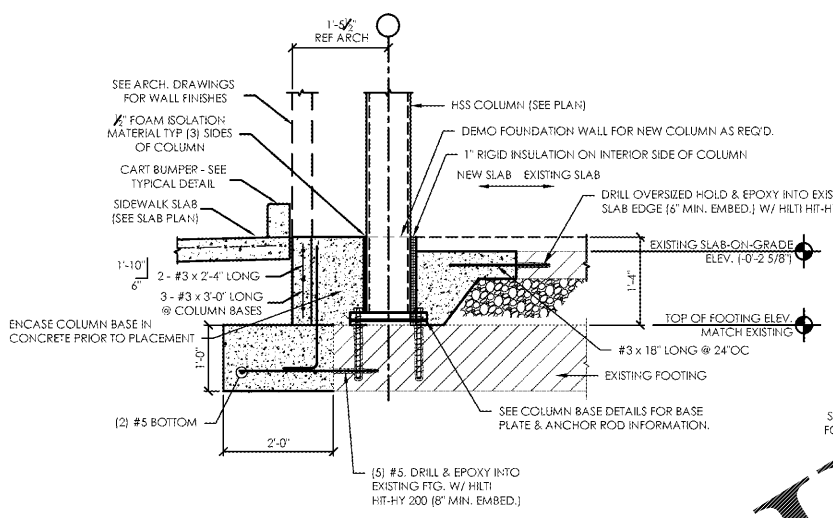
310 MILLS AVE. GREENVILLE, SC 29605
 864.242.9881
 plans@narramore.net
 © 2018 NARRAMORE ASSOCIATES, INC.
 COPYRIGHT PROTECTED BY FEDERAL LAW



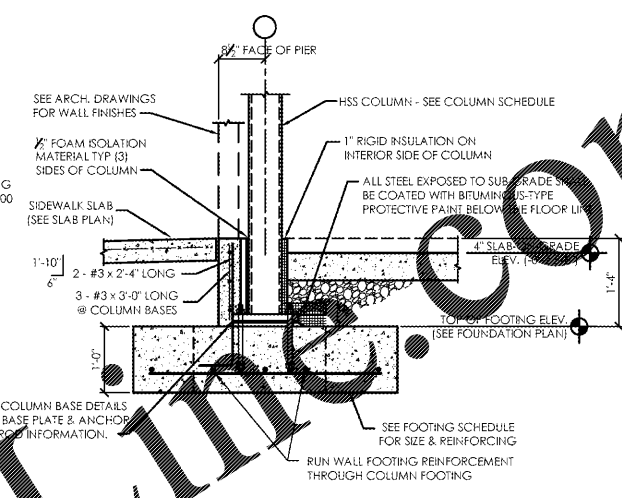
1 Section
 SCALE: 3/4" = 1'-0"



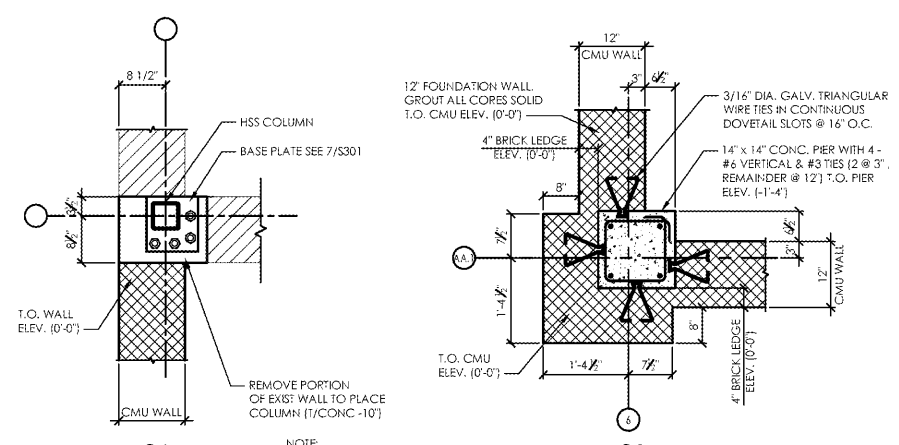
2 Section
 SCALE: 3/4" = 1'-0"



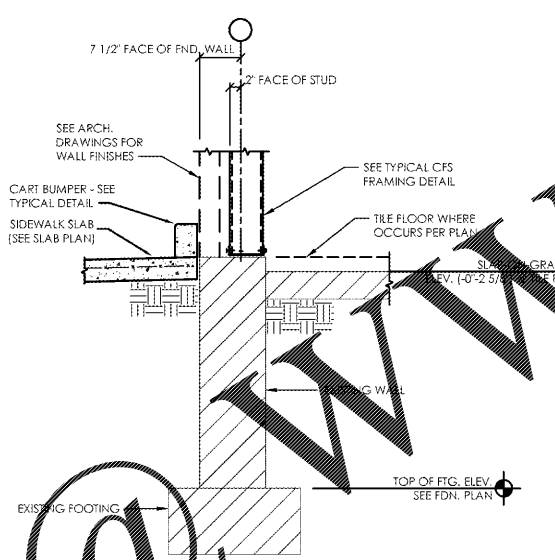
3 Section
 SCALE: 3/4" = 1'-0"



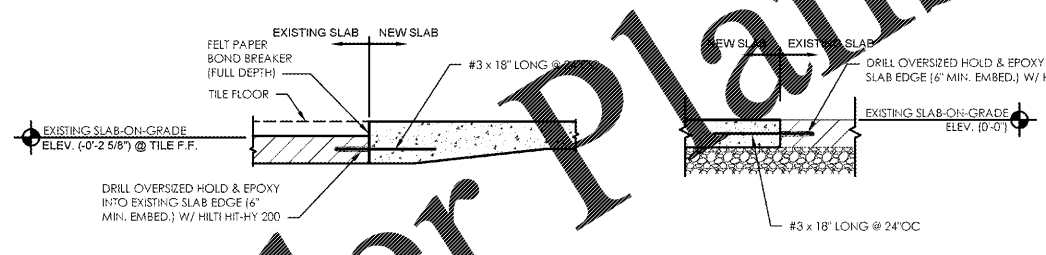
4 Typical Exterior Column Section
 SCALE: 3/4" = 1'-0"



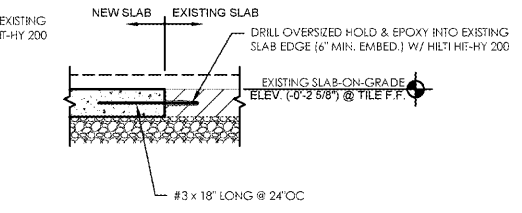
5 Detail
 NO SCALE



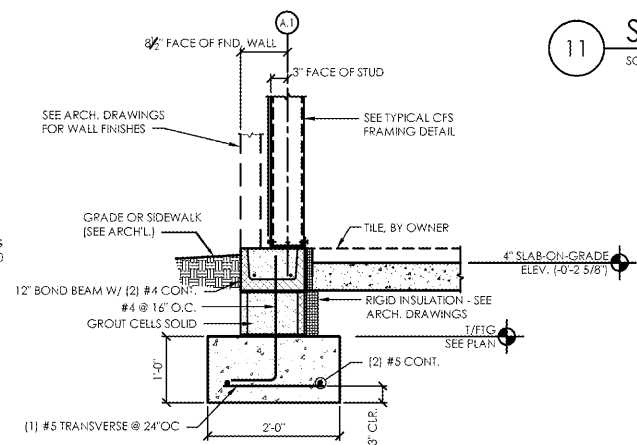
6 Section
 SCALE: 3/4" = 1'-0"



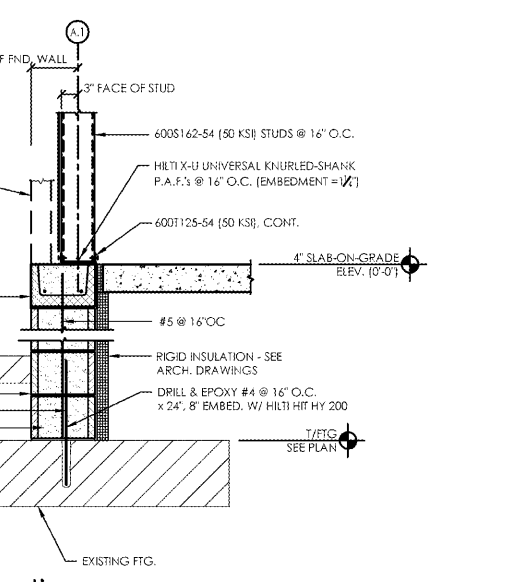
9 Section
 SCALE: 3/4" = 1'-0"



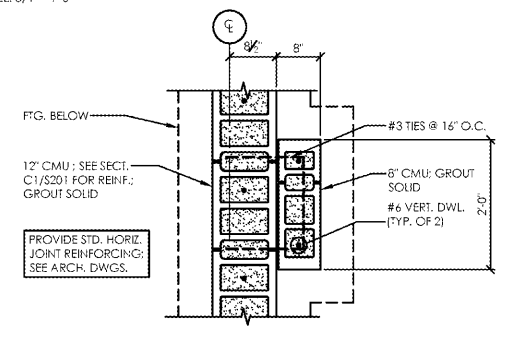
10 Section
 SCALE: 3/4" = 1'-0"



11 Section
 SCALE: 3/4" = 1'-0"



12 Section
 SCALE: 3/4" = 1'-0"



13 Pier Detail
 SCALE: 3/4" = 1'-0"

Order Plans



1597 DRY POND RD.
 JEFFERSON, GA 30549
 706.387.7722
 FAX: 706.387.7701

ALDI FOOD STORE # 61
 2589 Spring Road
 Smyrna, GA 30080

REVISIONS

PROJECT DATA
 V1.07 100x155 LW Expansion
 PROJECT NUMBER
 18412
 ISSUE DATE
 10-25-18

BRITT PETERS AND ASSOCIATES INC.
 consulting engineers
 101 Falls Park Drive
 Suite 601
 Greenville, SC 29601
 (864) 271-8869
 (864) 233-5140 Fax
 www.brittpeters.com
 BPA Job No. 181163

ALDI FOOD STORE #61
 Smyrna, GA

S-303

Foundation
 Details