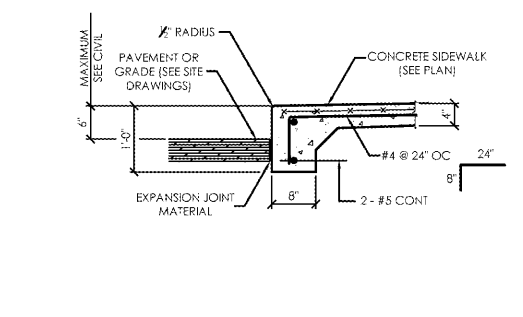
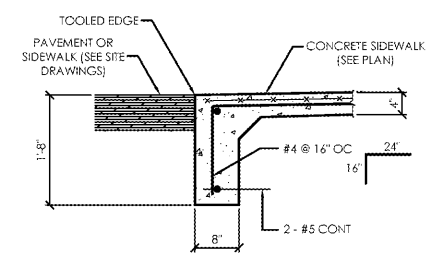


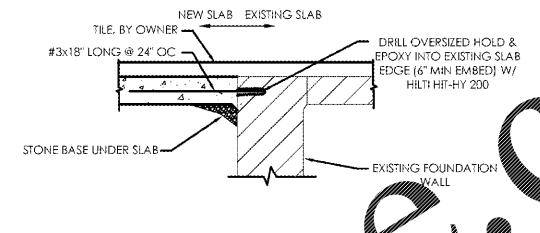
REFER TO MECHANICAL DRAWINGS FOR SIZE AND LOCATION OF ALL PIPES RUNNING THROUGH WALLS.



2 Section  
SCALE: 3/4" = 1'-0"

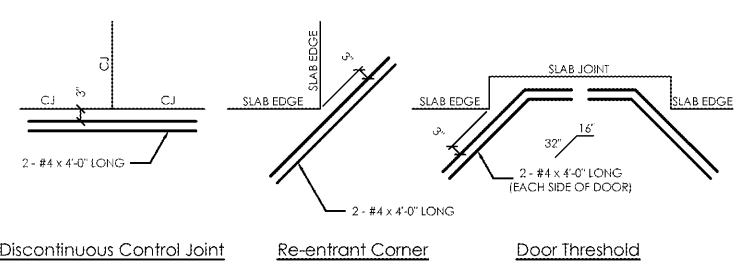


3 Section  
SCALE: 3/4" = 1'-0"

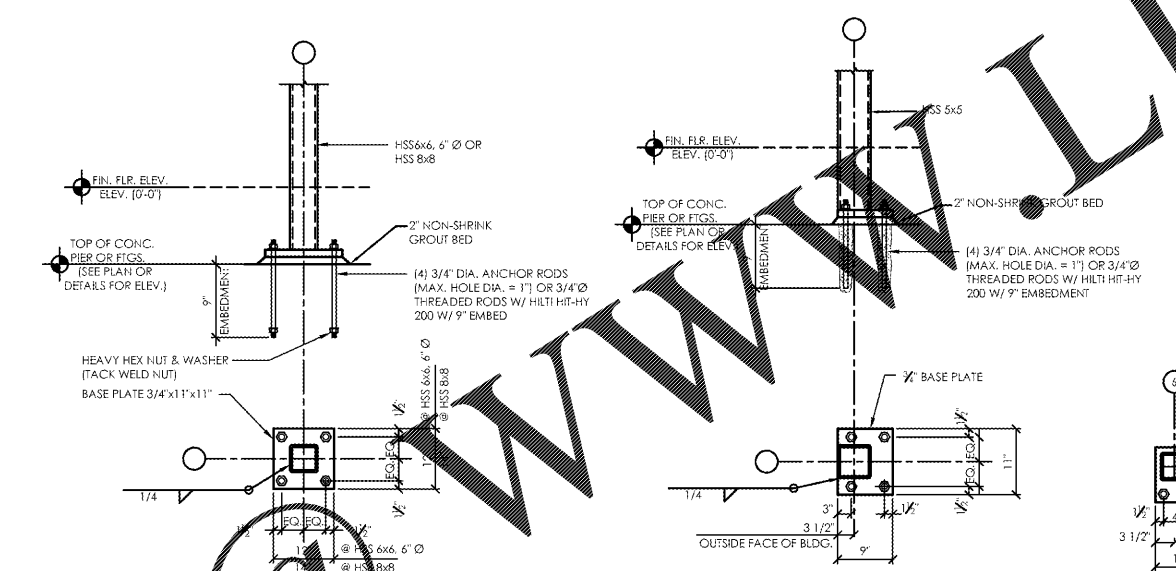


4 Section  
SCALE: 3/4" = 1'-0"

1 Typical Foundation Wall Reinforcement Detail At Mechanical Penetrations  
NO SCALE

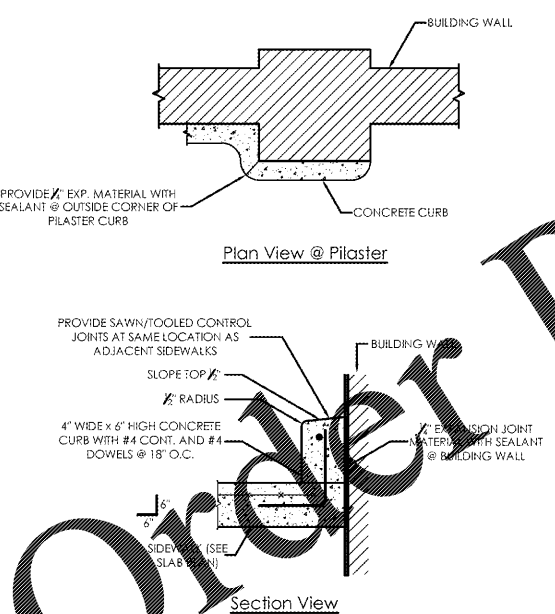


5 Typical Slabs-on-Grade Reinforcement  
NO SCALE

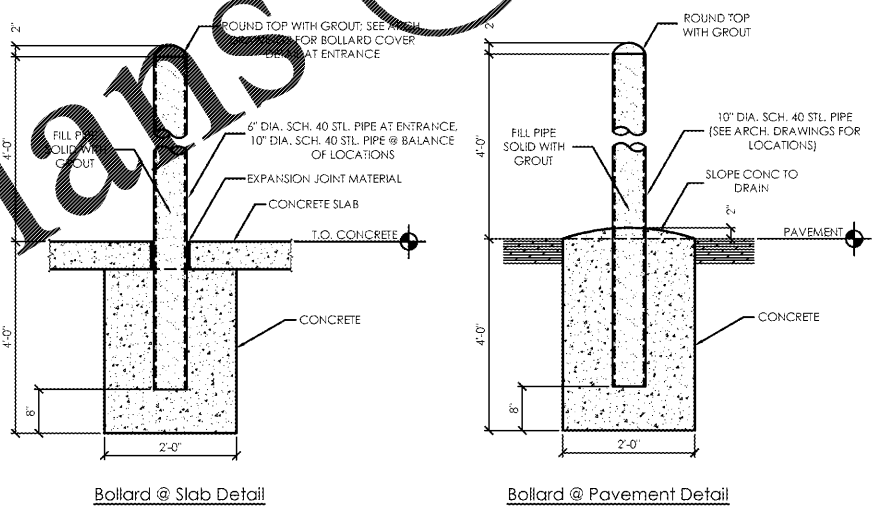


6 Column Base Detail  
NO SCALE

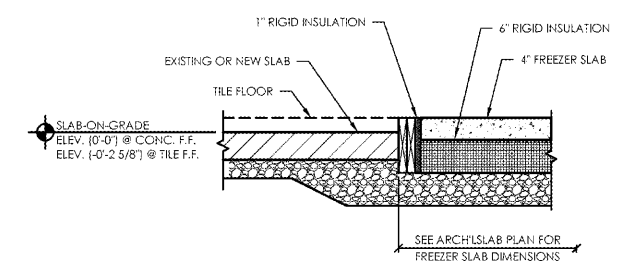
7 Column Base Detail  
NO SCALE



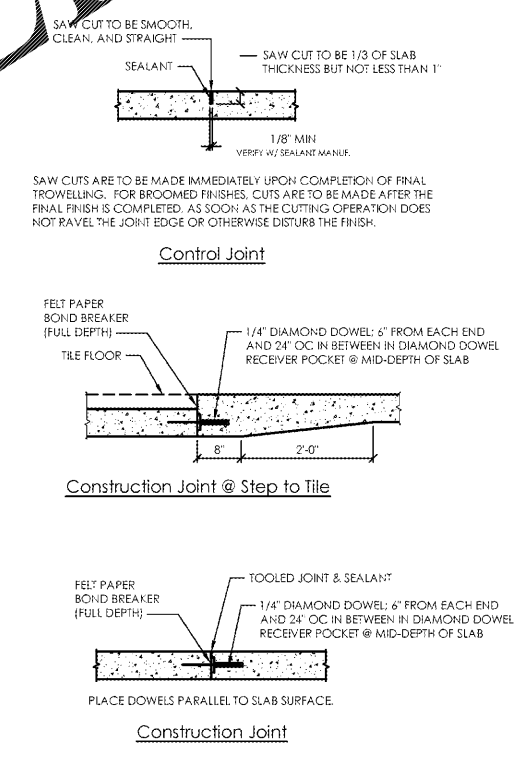
9 Typical Concrete Cart Bumper Detail  
NO SCALE



10 Typical Steel Bollard Detail  
SCALE: 3/4" = 1'-0"



11 Section @ Freezer Slab  
SCALE: 3/4" = 1'-0"



8 Typical Joint Details for Slabs-on-Grade  
NO SCALE

**NARRAMORE ARCHITECTURE**  
American Institute of Architects  
310 MILLS AVE. GREENVILLE, SC 29605  
864.242.9881  
plans@narramore.net  
© 2018 NARRAMORE ASSOCIATES, INC.  
COPYRIGHT PROTECTED BY FEDERAL LAW



1597 DRY POND RD.  
JEFFERSON, GA 30549  
706.387.7722  
FAX: 706.387.7701

**ALDI FOOD STORE # 61**  
2589 Spring Road  
Smyrna, GA 30080

REVISIONS	

**BRITT PETERS AND ASSOCIATES INC.**  
consulting engineers  
101 Falls Park Drive  
Suite 601  
Greenville, SC 29601  
(864) 271-8869  
(864) 233-5140 Fax  
www.brittpeters.com  
BPA Job No. 181163

**PROJECT DATA**  
V1.07 100x155 LW Expansion  
**PROJECT NUMBER**  
18412  
**ISSUE DATE**  
10-25-18

**ALDI FOOD STORE #61**  
Smyrna, GA

**S-301**  
Foundation Details