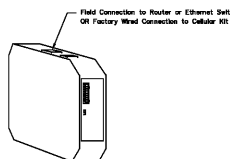


ELECTRICAL PACKAGE - Job#3590126

NO.	TAG	PACKAGE #	LOCATION	SWITCHES		OPTION	FANS CONTROLLED							
				LOCATION	QUANTITY		TYPE	#	H.P.	VOLTS	FLA			
1		DCV-2111	UTILITY Cabinet Left	03 - Utility Cabinet Left	1 Light	Smart Controls DCV								
				Hood # 1	1 Fan									

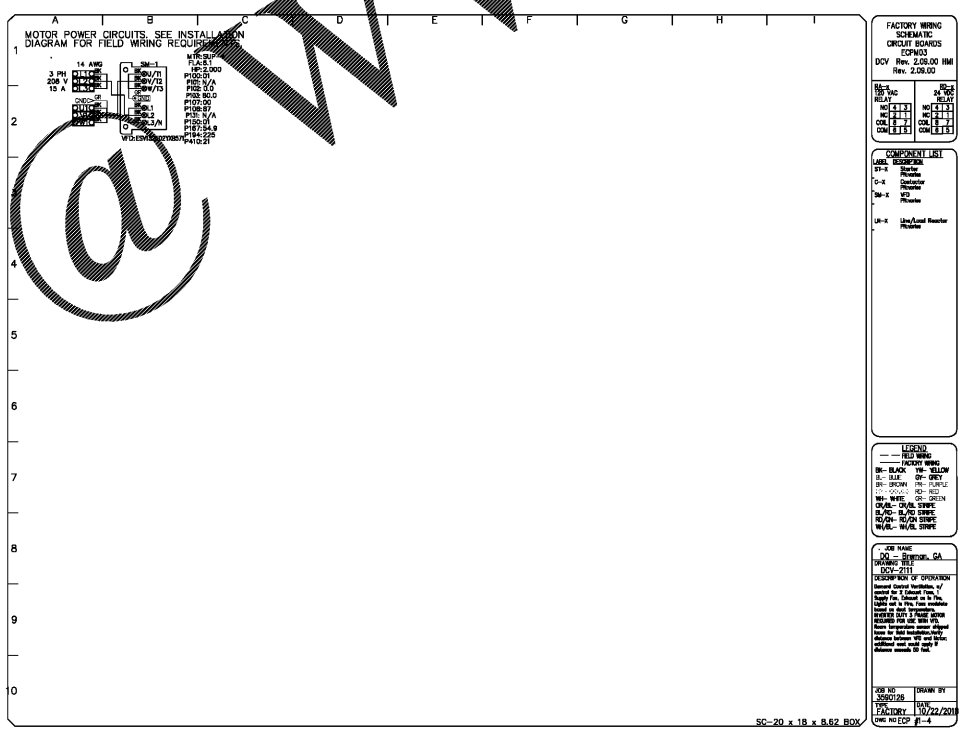
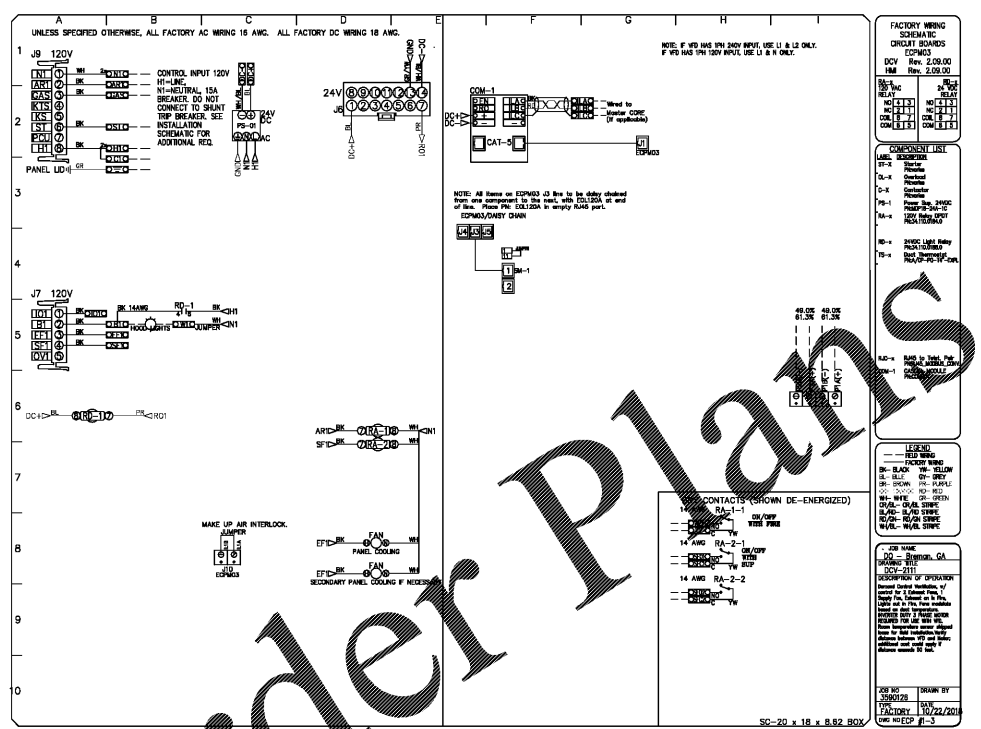
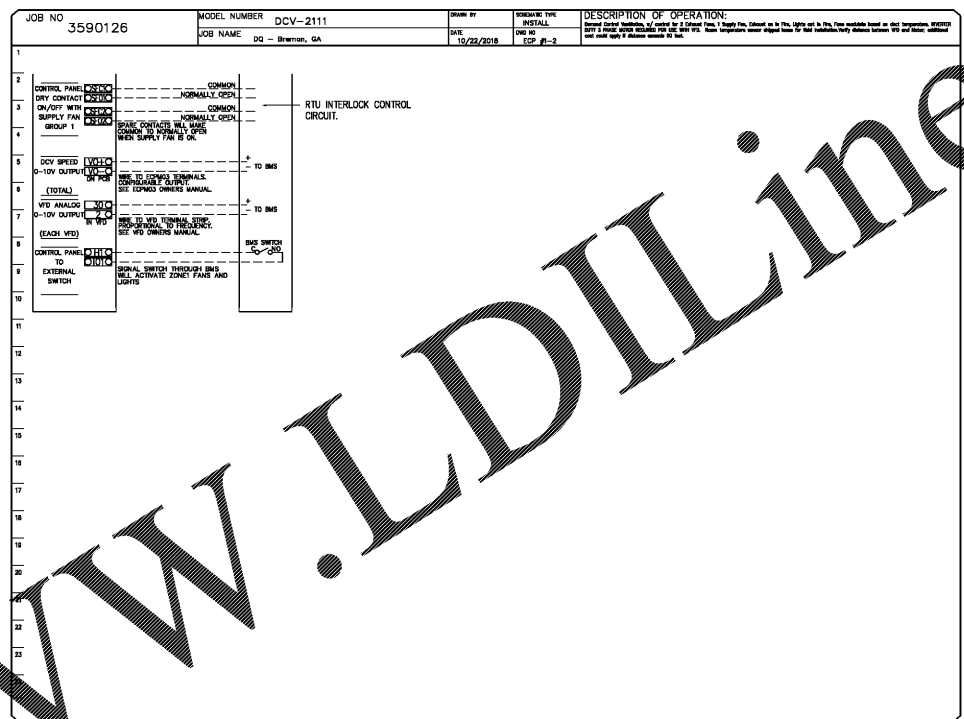
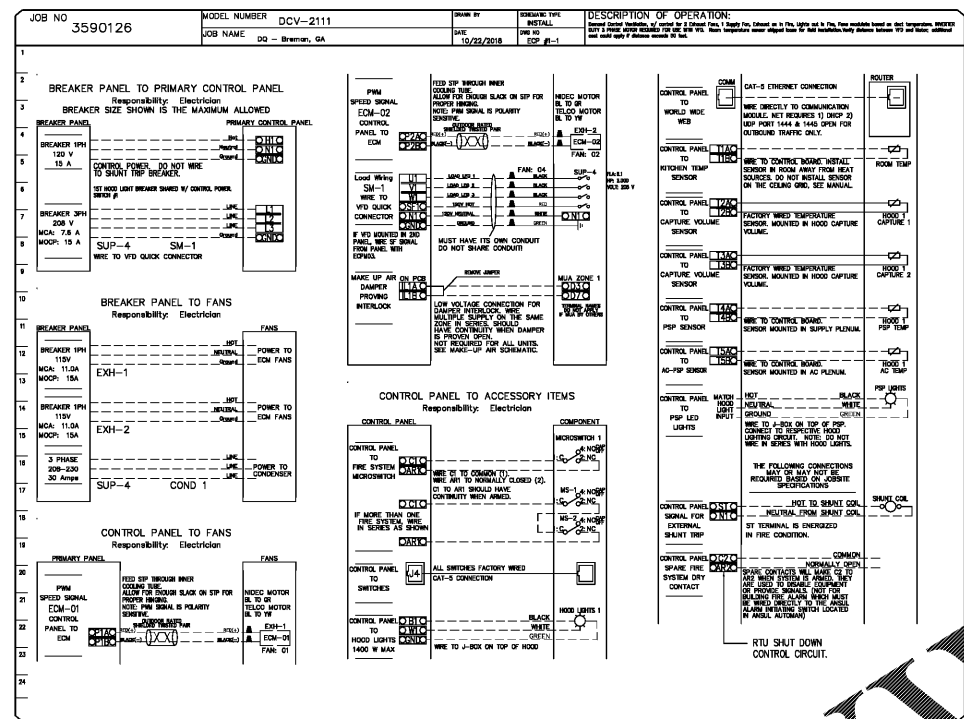


CASlink Monitor and Control

Hood control panel to support communications to cloud-based Building Management System.
 - Hood Control Panel to allow cloud-based Building Management System to monitor real time parameters outlined as MONITOR in the points list.
 - Hood Control Panel to allow cloud-based Building Management System to control parameters outlined as CONTROL in the points list.
 Hood control panel to allow remote changes to system settings such as VFD frequencies, ECM speeds, temperature set points, fan and wash schedules, etc.

MONITORING AND CONTROL POINTS LIST

DCV Packages	Function	SC Packages	Function
Room Temperature	MONITOR	Room Temperature(s)	MONITOR
Duct Temperature(s)	MONITOR	Duct Temperature(s)	MONITOR
MUA Discharge Temperature	MONITOR	MUA Discharge Temperature	MONITOR
Kitchen RTU Discharge Temperature	MONITOR	Kitchen RTU Discharge Temperature	MONITOR
Fan Speed	MONITOR	Condenser Faults	MONITOR
Fan Ampereage	MONITOR	Fan Faults	MONITOR
Fan Power	MONITOR	Fan Status	MONITOR
VFD Faults	MONITOR	PCU Faults	MONITOR
Condenser Faults	MONITOR	PCU Filter Chg Percentage	MONITOR
Fan Faults	MONITOR	Fan Condition	MONITOR
Fan Status	MONITOR	Core Fire System	MONITOR
PCU Filter Chg Percentage	MONITOR	Building Pressure	MONITOR
Fan Condition	MONITOR	Light Button(s)	MONITOR & CONTROL
Core Fire System	MONITOR	Wash Button	MONITOR & CONTROL
Building Pressure	MONITOR		
Free Time System	MONITOR & CONTROL		
Fan Status	MONITOR & CONTROL		
Light Button	MONITOR & CONTROL		
Wash Button	MONITOR & CONTROL		



REVISIONS

NO.	DESCRIPTION	DATE
1		
2		
3		
4		

CAPTIVE
 Iowa Office
 2041 Grand Ave, Suite B, West Des Moines, IA 50266
 PHONE: (515) 221-1188 FAX: (515) 227-6995 EMAIL: reg71@captiveaire.com

NEW BUILDING FOR:

 INTERSECTION OF DAVIS BLVD & ALABAMA AVENUE
 BREMEN, IOWA 50314
 CELL # 252 0065
 AMERICAN DAIRY QUEEN
 MINNEAPOLIS, MN U.S.A.
 REGISTERED U.S. PATENT OFFICE, AMERICAN DAIRY QUEEN CORPORATION. THIS DRAWING, ITS DESIGN DETAIL AND INVENTION ARE THE PROPERTY OF AMERICAN DAIRY QUEEN INC. (ADQ) AND SHALL NOT BE COPIED IN ANY MANNER NOR DISCLOSED TO ANY OUTSIDE PARTY WITHOUT ADD CONSENT.

DATE: 10/22/2018
 DWG.#: 3590126
 DRAWN BY: jsievers
 SCALE: 3/4" = 1'-0"
 MASTER DRAWING

DQ - Bremen, GA
 Davis Blvd & Alabama Ave,
 BREMEN, GA, 30110

GEORGIA ENGINEER LICENSE
 NUMBER PE025568
 SPECIAL NOTICES
 In the event the client consents to, allows, authorizes or approves of changes to any plans, specifications or other construction documents, and these changes are not approved in writing by the design professional, the client recognizes that such changes and the results thereof are not the responsibility of the design professional. Therefore, the client agrees to release the design professional from any liability arising from the construction, use or result of such changes. In addition, the client agrees to the fullest extent permitted by law, to indemnify and hold the design professional harmless from any damage, liability or cost (including reasonable attorney's fees and costs of defense) arising from such changes. All rights reserved. No part of this drawing may be reproduced by photocopy or by any other means, or stored, processed, or transmitted in or by any computer or other systems without the prior written permission of the Engineer.

ISSUE DATE: 10-26-18
 REVISION DATE: 10-26-18 ORIGINAL ISSUE

CAPTIVEAIRE
 HOOD SHOP
 DRAWINGS
 SHEET NO. 7
 SHEET NUMBER:
 M4.7

Order Plans