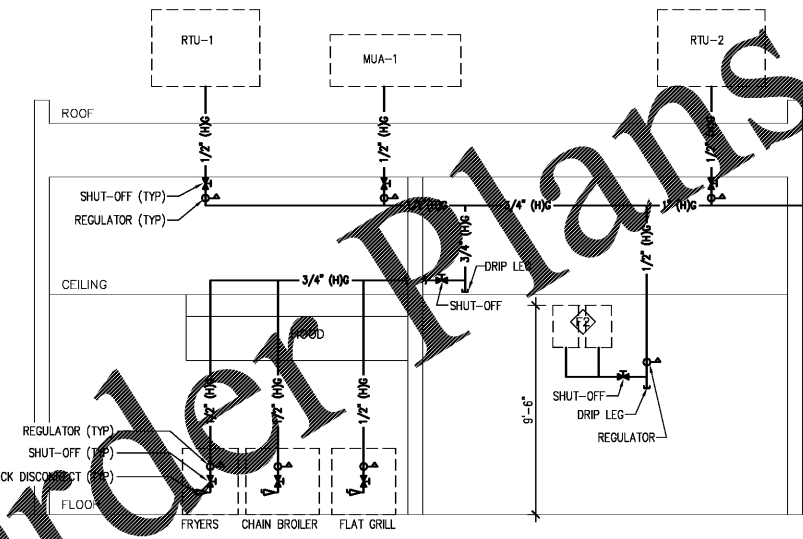


1 GAS PIPING SUPPLY PLAN
 PI SCALE: 1/4" = 1'-0"

PLUMBING SYMBOLS	
SYMBOL	DESCRIPTION
(Symbol)	EXISTING
(Symbol)	FLOOR DRAIN
(Symbol)	FLOOR DRAIN W/FUNNEL
(Symbol)	FLOOR SINK
(Symbol)	Y.C.O. YARD CLEAN OUT
(Symbol)	D.C.O. DOUBLE CLEAN OUT
(Symbol)	F.C.O. FLOOR CLEAN OUT
(Symbol)	W.C.O. WALL CLEAN OUT
(Symbol)	V.T.R. VENT THRU ROOF
(Symbol)	B.F.P. BACKFLOW PREVENTER
(Symbol)	WASTE - BELOW FLOOR
(Symbol)	SYRUP CHASE - BELOW FLOOR
(Symbol)	VENT
(Symbol)	FILTERED WATER
(Symbol)	DCW-DOMESTIC COLD WATER
(Symbol)	DHW-DOMESTIC HOT WATER (120F OR 110F)
(Symbol)	G-GAS PIPING (H) HIGH PRESSURE

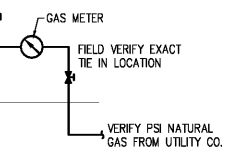


2 GAS PIPING SCHEMATIC
 PI

GAS LOAD - BTU	
RTU-1	120,000
RTU-2	120,000
MUA-1	204,500
WATER HEATER	199,000
WATER HEATER	199,000
FRYER (BATTERY OF 3)	240,000
CHAR BROILER	71,200
3' FLAT GRILL	215,000
TOTAL	1,448,700

TOTAL GAS USAGE: 1,448.7 MBH
 MIN. SRVC. PRESSURE: 2 P.S.I. MIN.
 PRSR. AFTER METER: 2 P.S.I.
 PRESSURE DROP: 1 P.S.I.
 LONGEST RUN: 100'±

NOTE:
 REDUCE GAS PRESSURE AT THE
 EQUIPMENT'S REGULATORS IN
 ACCORDANCE WITH EQUIPMENT
 MANUFACTURER'S SPECIFICATIONS.



- PLUMBING SUPPLY PLAN GENERAL NOTES
- REFER TO EQUIPMENT SCHEDULE FOR SPECIFICATIONS FOR EQUIPMENT PROVIDED BY OWNER AND/OR OTHERS.
 - PROVIDE SHUT OFF VALVES AT ALL FIXTURES.
 - PLUMBING CONTRACTOR TO VERIFY IN FIELD ALL EXISTING UTILITIES, DIMENSIONS AND CONDITIONS PRIOR TO BIDDING AND CONSTRUCTION.
 - DIMENSIONS GIVEN TO ROUGH-INS ARE CRITICAL FOR EQUIPMENT PLACEMENT.
 - GAS PIPING CONTRACTOR MAY USE FLEXIBLE AND CONTINUOUS PIPING AS LISTED AND APPROVED AGA, TracPipe® BY "megafLEX" IF ALLOWED BY PREVAILING CODES.
 - SEE BOOK SPECS FOR SPECIFICATIONS.

- PLUMBING SUPPLY PLAN KEY NOTES (#)
- HALF HIGH WALL. NO FULL HEIGHT VERTICAL PLUMBING LINES.
 - IF LOCAL GAS PRESSURE REQUIRES A REGULATOR ON THE GAS OPERATED EQUIPMENT, THE PLUMBING CONTRACTOR IS TO PROVIDE AND INSTALL THE GAS REGULATORS AS REQUIRED.
 - WATER HEATER FLUE AND COMBUSTION AIR VENT THROUGH ROOF SEE DETAIL 8/P5.
 - PROVIDE ONE AUTOMATIC SOLENOID GAS SHUT-OFF VALVE ON BRANCH GAS PIPING TO APPLIANCES LOCATED ACCESSIBLE ABOVE CEILING TILE.
 - QUICK DISCONNECTS PROVIDED WITH FRYERS, CHAIN BROILER, & GRILL.
 - GALVANIZED OR COPPER GAS PIPING UP THROUGH CURB TO ROOFTOP HVAC EQUIPMENT.
 - 1/2" GAS PIPING TO WATER HEATER, SEE DETAIL 8/P5.
 - GAS METER (DO NOT MOUNT ON BUILDING EPS) WITH SHUT-OFF VALVES AND PRESSURE REGULATOR PROVIDED BY THE GAS COMPANY. GAS METER SIZED FOR 1,448.7 MBH @ 2 PSI DELIVERY PRESSURE ON BUILDING SIDE OF METER.
 - PLUMBING CONTRACTOR TO PROVIDE QUICK DISCONNECT AND 3/4" BLACK IRON PIPE FROM FRYER TO USED COOKING OIL RECYCLING TANK. PROVIDE CONSTANT MIN. 1/4" PER FT. SLOPE TO RECYCLING TANK. PROVIDE BACK TO BACK 45° ELBOWS FOR ANY CHANGE IN DIRECTION.
 - EXTEND VENT THRU ROOF. MAINTAIN 10'-0" FROM ALL O.A. INTAKES.
- (H) HIGH PRESSURE GAS PIPE SIZES BASED ON 2 PSI DELIVERY PRESSURE WITH A 1PSI DROP IN PRESSURE THROUGH A TOTAL EQUIVALENT LENGTH OF 100 FT.

NEW BUILDING FOR:

 INTERSECT OF DAVENPORT & ALABAMA AVENUE
 BREMEN, MN 55440
 CELL ID: 252 0065
 AMERICAN DAIRY QUEEN
 MINNEAPOLIS, MN U.S.A.
 *REGISTERED U.S. PATENT OFFICE, AMERICAN DAIRY
 QUEEN CORPORATION. THIS DRAWING, ITS DESIGN
 DETAIL AND INVENTION ARE THE PROPERTY OF
 AMERICAN DAIRY QUEEN INC. (ADQ) AND SHALL NOT BE
 COPIED IN ANY MANNER NOR DISCLOSED TO ANY
 OUTSIDE PARTY WITHOUT ADD CONSENT.



GEORGIA ENGINEER LICENSE
 NUMBER PE025568
 SPECIAL NOTICES
 In the event the client consents to, allows, authorizes or
 approves of changes to any plans, specifications or other
 construction documents, and these changes are not approved
 in writing by the design professional, the client recognizes that
 such changes and the results thereof are not the responsibility
 of the design professional. Therefore, the client agrees to
 release the design professional from any liability arising from
 the construction, use or result of such changes. In addition,
 the client agrees to the fullest extent permitted by law, to
 indemnify and hold the design professional harmless from any
 damage, liability or cost (including reasonable attorney's fees
 and costs of defense) arising from such changes. All rights
 reserved. No part of this drawing may be reproduced by
 photocopy or by any other means, or stored, processed, or
 transmitted in or by any computer or other systems without the
 prior written permission of the Engineer.

ISSUE DATE: 10-26-18
 REVISION DATE:
 10-26-18 ORIGINAL ISSUE

GAS PIPING
 SUPPLY PLAN

SHEET NUMBER:
 P2