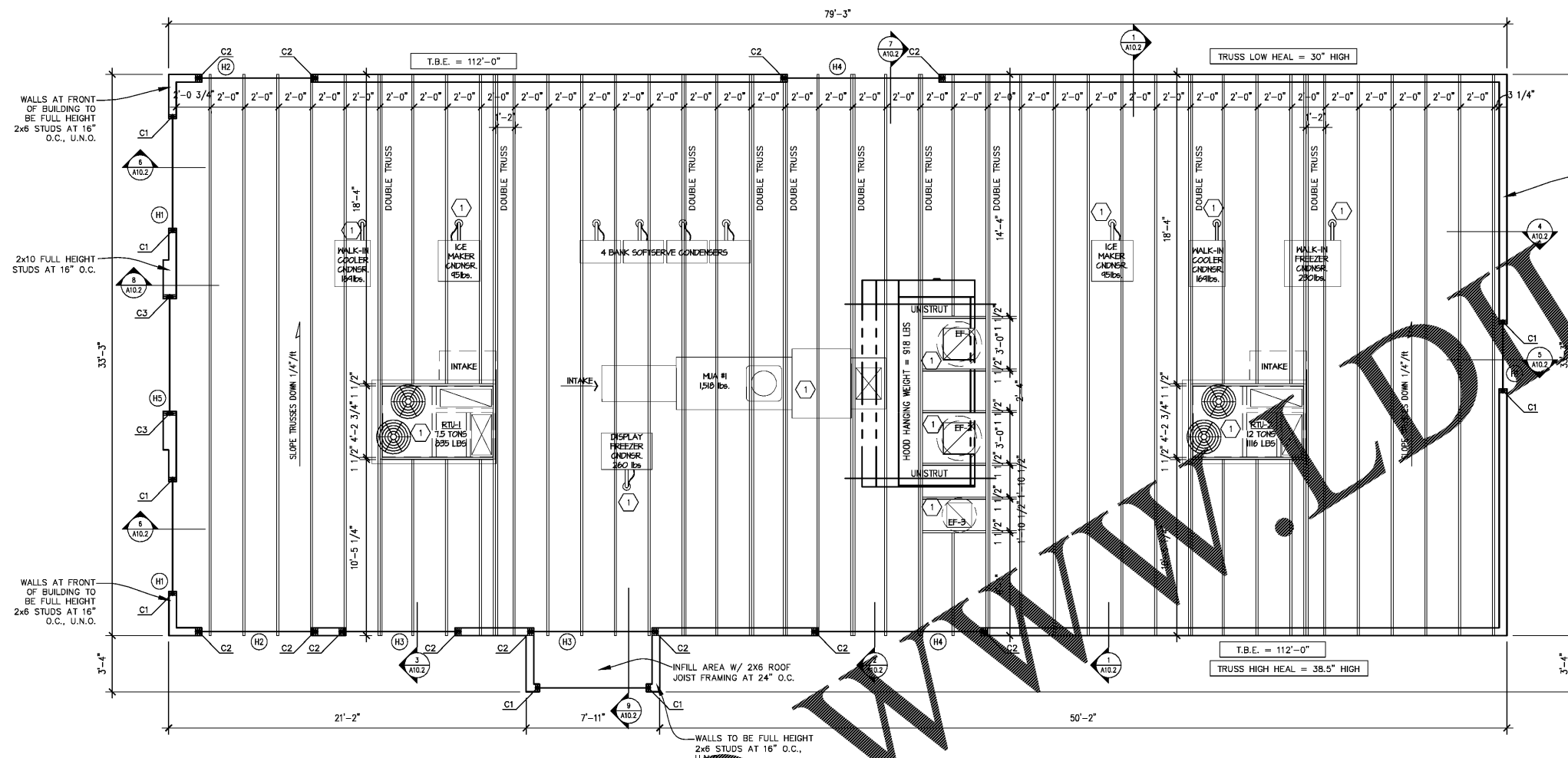




INTERSECTION OF HWY 5 BLVD & ALABAMA AVENUE  
BREVARD, GA 31110  
PARCEL ID: Z52 0065

AMERICAN DAIRY QUEEN  
MINNEAPOLIS, MN U.S.A.  
REGISTERED U.S. PATENT OFFICE. AMERICAN DAIRY  
QUEEN CORPORATION. THIS DRAWING, ITS DESIGN  
DETAIL AND INVENTION ARE THE PROPERTY OF  
AMERICAN DAIRY QUEEN INC. (ADQ) AND SHALL NOT BE  
COPIED IN ANY MANNER NOR DISCLOSED TO ANY  
OUTSIDE PARTY WITHOUT ADQ CONSENT.



WALLS AT REAR OF BUILDING TO BE FULL HEIGHT 2x6 STUDS AT 16" O.C.

NOTE: PROVIDE DOUBLE 2X6 STUD COLUMNS AT DOUBLE TRUSS BEARING LOCATIONS

NOTE: VERIFY ROUGH OPENING WITH ROOF TOP UNIT SUPPLIER PRIOR TO TRUSS FABRICATION.

ALL EXTERIOR OVERALL DIMENSIONS SHOWN ARE FROM EXTERIOR FACE OF STUD TO EXTERIOR FACE OF STUD.

DIMENSIONS / SPACING OF TRUSSES ARE SHOWN TO THE RIGHT OUTSIDE FACE OF THE TRUSS

ARCHITECT TO RECEIVE AND APPROVE SHOP DRAWINGS OF TRUSSES PRIOR TO FABRICATION.

1 ROOF FRAMING PLAN  
A9.2 SCALE: 1/4" = 1'-0"

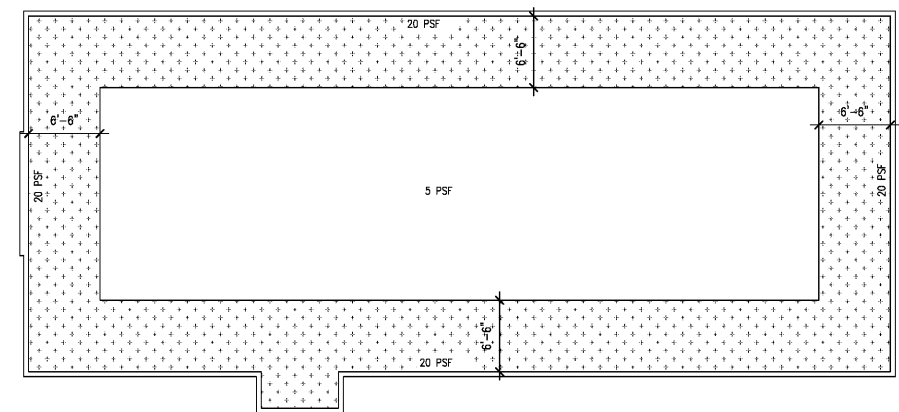
ROOF FRAMING NOTES:

- SEE SHEET A8.1 NOTES.
- VERIFY ALL DETAILS AND DIMENSIONS WITH ARCHITECTURAL DRAWINGS.
- ROOF STRUCTURE IS TO BE OPEN WEB ROOF TRUSSES. SEE ARCHITECTURAL AND ROOF FRAMING PLAN FOR HEAL HEIGHTS.
- REFER TO ARCHITECTURAL & FRAMING PLAN FOR TRUSS BEARING ELEVATIONS (T.B.E.), ELEVATION OF FRAMING AT CANTERS AND EYE BARS.
- MARK THIS: "H" INDICATES HEADER OVER BEARING, REFER TO HEADER SCHEDULE.
- MARK THIS: "C" INDICATES COLUMN, REFER TO COLUMN SCHEDULE.
- SEE PLAN FOR EXTENT OF SNOW DRIFTING. ROOF FRAMING SHALL BE DESIGNED FOR ADDITIONAL DRIFTING AND THE WEIGHT OF MECHANICAL EQUIPMENT. VERIFY EQUIPMENT HEIGHT, LOCATION, AND DIMENSIONS WITH THE EQUIPMENT SUPPLIERS PRIOR TO FINAL DESIGN. REFER TO NOTES FOR ADDITIONAL INFORMATION.
- ALL DIMENSIONS ARE TO OUTSIDE FACE OF STUD WALL / STUD FACE / END OF TRUSS UNLESS NOTED OTHERWISE.
- MARK THIS: "1" INDICATES MECHANICAL EQUIPMENT WITH ROOF PENETRATION.

HEADER SCHEDULE		
MARK	HEADER SIZE	MIN. BEARING
(H1)	(2) 2x10	3" BEARING
(H2)	(3) 2x12	4.5" BEARING
(H3)	(3) 1 3/4 X 16" MICROLAM 1.9E	4.5" BEARING
(H4)	(3) 1 3/4 X 18" MICROLAM 1.9E	4.5" BEARING
(H5)	(3) 2x12	3" BEARING

COLUMN/POST SCHEDULE		
MARK	SIZE	COMMENTS
(C1)	(2) 2x6	(2) 2x TRIMMER STUD, SEE NOTE 2 FOR REQUIRED KING STUDS
(C2)	(3) 2x6	(3) 2x TRIMMER STUD, SEE NOTE 2 FOR REQUIRED KING STUDS
(C3)	(2) 2x10	(2) 2x TRIMMER STUD, SEE NOTE 2 FOR REQUIRED KING STUDS

- NOTES:
- SEE 7/A8.1 FOR TYPICAL HEADER FRAMING
  - PROVIDE (1) KING STUD EACH END FOR EVERY 4'-0" OF OPENING WIDTH



2 ROOF SNOW LOADING PLAN  
A9.2 SCALE: 1/8" = 1'-0"  
SEE 8/A8.1 FOR TRUSS LOADING DIAGRAM.



GEORGIA ARCHITECT LICENSE  
NUMBER RA014022

SPECIAL NOTICES  
In the event the client consents to, allows, authorizes or approves of changes to any plans, specifications or other construction documents, and these changes are not approved in writing by the design professional, the client recognizes that such changes and the results thereof are not the responsibility of the design professional. Therefore, the client agrees to release the design professional from any liability arising from the construction, use or result of such changes. In addition, the client agrees to the fullest extent permitted by law, to indemnify and hold the design professional harmless from any damage, liability or cost (including reasonable attorneys fees and costs of defense) arising from such changes. Copyright © 2018 by John S. Odum, Architect. All rights reserved. No part of this drawing may be reproduced by photocopy or by any other means, or stored, processed, or transmitted in or by any computer or other systems without the prior written permission of the Architect.

ISSUE DATE: 11-01-18

REVISION DATE:  
11-01-18 ORIGINAL ISSUE

ROOF FRAMING PLAN

SHEET NUMBER:  
A9.2

Order Plans @