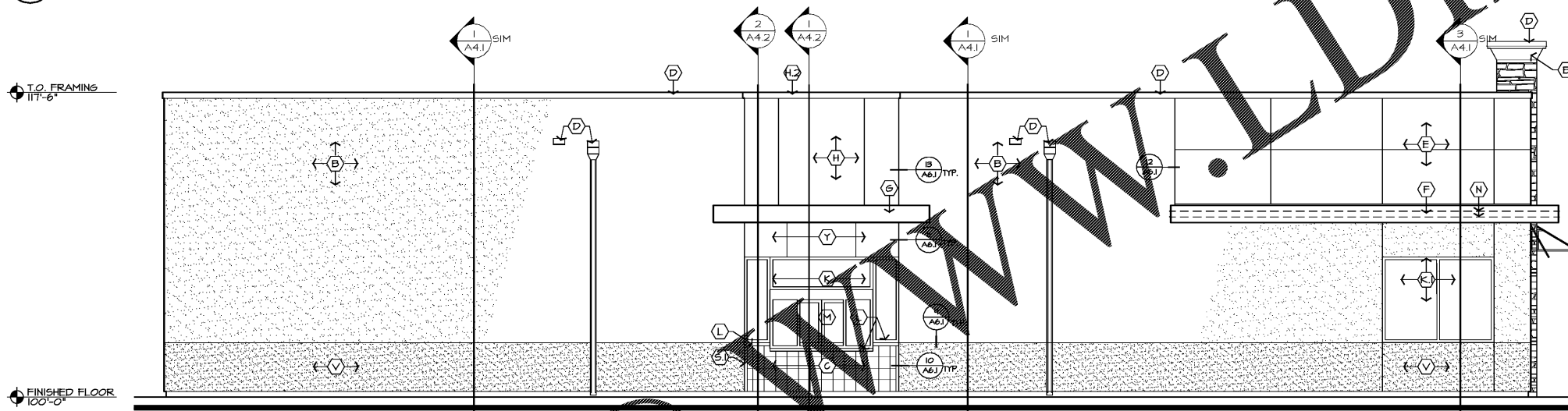


1 ENTRANCE ELEVATION

A3.1 SCALE: 1/4" = 1'-0"

NOTE: THE DQ RED SPOON HANDLES HAVE SPECIAL INSTALLATION REQUIREMENTS. ALUM. STOREFRONT MFG. MUST COORD. LOCK & HANDLE LOCATION & HEIGHTS



2 DRIVE THRU ELEVATION

A3.1 SCALE: 1/4" = 1'-0"

EXTERIOR ELEVATION KEYNOTES: (GRILL & CHILL)

- (A) STONE CHIMNEY:**
MFR: CULTURED STONE BY BORAL
STYLE: COUNTRY LEDGE STONE - NET STACK
COLOR: CHARDONNAY 20206
SUPPLIER: CULTURED STONE BY BORAL
GROUT: GREY
- (B) EIFS:**
MFR: SIO CORPORATION
COLOR: NA1-0034 (MATCHES BENJAMIN MOORE SANDY BROWN #1046)
FINISH: 306 SIO MEDIUM SAND
VENDOR: SIO CORPORATION
NOTE: PROVIDE HIGH IMPACT EIFS FROM GRADE TO 3'-0" A.F.F.
- (C) CERAMIC TILE D.T. MAINS:**
MFR: INTERCERAM
SERIES: LIPSTICK
COLOR: BOLD SHELL
SIZE: 8"x8"
GROUT: "LATITE"
GROUT COLOR: ALMOND
SUPPLIER: HLC
NOTE: MUST BE INSTALLED PER TILE COUNCIL OF NORTH CAROLINA 2014E-04 AND ANSI "A118.4"
- (D) STRIP & SPOONS:**
MFR: UNA-CLAD
MATERIAL: 304 SA STEEL
COLOR: ALMOND
FINISH: KYNAR 500
- (E) METAL PANEL:**
MFR: ALPOLIC
STYLE: 3M
COLOR: DQ RED
NOTE: MUST BE INSTALLED HORIZONTALLY. REFERENCE ARROWS ON BACK OF PANEL MUST BE ALIGNED IN THE SAME DIRECTION.
VENDOR: NU LOOK EXTERIORS
- (F) METAL EYEBROW & FLASHING:**
MFR: UNA-CLAD
STYLE: 040 ALUMINUM
COLOR: MATE BLACK
FINISH: KYNAR 500
VENDOR: NU LOOK EXTERIORS
- (G) METAL CANOPY FLASHING:**
MFR: UNA-CLAD
STYLE: 040 ALUMINUM
COLOR: CLEAR ANODIZED SATIN
VENDOR: NU LOOK EXTERIORS
- (H) METAL PANEL:**
MFR: ALPOLIC
MATERIAL: 3M
COLOR: DG BLUE
VENDOR: NU LOOK EXTERIORS
- (I) D.T. COPIING:**
MFR: UNA-CLAD
STYLE: 032 ALUMINUM
COLOR: DG BLUE
FINISH: KYNAR 500
- (J) FABRIC AWNING:**
MFR: COOL PLANET AWNING
MATERIAL: SUNBRELLA
COLOR: JOCKEY RED
FRAME: 1"x1" ALUMINUM (WELD ALL JOINTS, GRIND SMOOTH)
FINISH: ANODIZED CLEAR SATIN
VENDOR: COOL PLANET AWNING OR HLC
- (K) STOREFRONT:**
MFR: YTK AP AMERICA INC.
STYLE: 2"x4 1/2"
FINISH: CLEAR SATIN ANODIZED ALUMINUM
GLAZING: CLEAR, 1" INSULATED, LOW E
- (L) WINDOW SILL FLASHING:**
MFR: YTK AP AMERICA INC.
FINISH: ANODIZED CLEAR SATIN
SIZE: 2" AS REQ'D BY LOCATION
- (M) DRIVE-THRU WINDOW:**
MFR: QUIKSERV
MATERIAL: ALUMINUM
FINISH: ANODIZED CLEAR SATIN
VENDOR: NMS - PART OF EQUIPMENT PACKAGE
- (N) STRIP LIGHTING:**
MFR: MORGAN HOPE
STYLE: LED-FLEX WITH BLACK TRACK
MODEL: LED-MH-120V-EB (BLUE LED)
VENDOR: HLC
NOTE: MUST BE INSTALLED PER MANUFACTURERS REQUIREMENTS
- (O) TRASH ENCLOSURE SOLID COLOR STAIN:**
MFR: BENJAMIN MOORE
COLOR: SANDY BROWN #1046
PRODUCT: ARBORCOAT WATERBORNE SOLID DECK & SIDING STAIN #640
PRIMER: SELF PRIMING ON MOST SURFACES (SEE TECH. DATA SHEET FOR DETAILS)
- (S) TRANSITION TRIM:**
SIZE: 1 1/2"D. x2 1/4" HAT CHANNEL
FINISH: CLEAR SATIN ANODIZED ALUMINUM
- (T) PAINT SERVICE DOOR & FRAME:**
MFR: BENJAMIN MOORE
COLOR: SANDY BROWN #1046
PRODUCT: AURA EXTERIOR PAINT LOW LUSTRE #634
PRIMER: FIRST COAT - AURA EXTERIOR PAINT LOW LUSTRE #634
- (V) EIFS:**
MFR: SIO CORPORATION
COLOR: NA13-0011 (MATCHES BENJAMIN MOORE ALGONQUIN TRAIL #1055)
FINISH: 306 SIO MEDIUM SAND
VENDOR: SIO CORPORATION
NOTE: PROVIDE HIGH IMPACT EIFS FROM GRADE TO 3'-0" A.F.F.
- (Y) BREAK METAL ENCLOSURE:**
MFR: UNA-CLAD
FINISH: CLEAR SATIN ANODIZED ALUMINUM
VENDOR: NU LOOK EXTERIORS

NEW BUILDING FOR:



INTERSECTION OF HWY 5 BLVD & LABAMA AVENUE
BREVARD, GA 31110
PARCEL ID: Z52 0065

AMERICAN DAIRY QUEEN
MINNEAPOLIS, MN U.S.A.
REGISTERED U.S. PATENT OFFICE. AMERICAN DAIRY QUEEN CORPORATION. THIS DRAWING, ITS DESIGN DETAIL AND INVENTION ARE THE PROPERTY OF AMERICAN DAIRY QUEEN INC. (ADQ) AND SHALL NOT BE COPIED IN ANY MANNER NOR DISCLOSED TO ANY OUTSIDE PARTY WITHOUT ADQ CONSENT.



11-01-18

GEORGIA ARCHITECT LICENSE
NUMBER RA014022

SPECIAL NOTICES
In the event the client consents to, allows, authorizes or approves of changes to any plans, specifications or other construction documents, and these changes are not approved in writing by the design professional, the client recognizes that such changes and the results thereof are not the responsibility of the design professional. Therefore, the client agrees to release the design professional from any liability arising from the construction, use or result of such changes. In addition, the client agrees to the fullest extent permitted by law, to indemnify and hold the design professional harmless from any damage, liability or cost (including reasonable attorneys fees and costs of defense) arising from such changes. Copyright © 2018 by John S. Odom, Architect. All rights reserved. No part of this drawing may be reproduced by photocopy or by any other means, or stored, processed, or transmitted in or by any computer or other systems without the prior written permission of the Architect.

ISSUE DATE: 11-01-18

REVISION DATE:
11-01-18 ORIGINAL ISSUE

EXTERIOR ELEVATIONS

SHEET NUMBER:

A3.1

Order Plans @ www.wldline.com