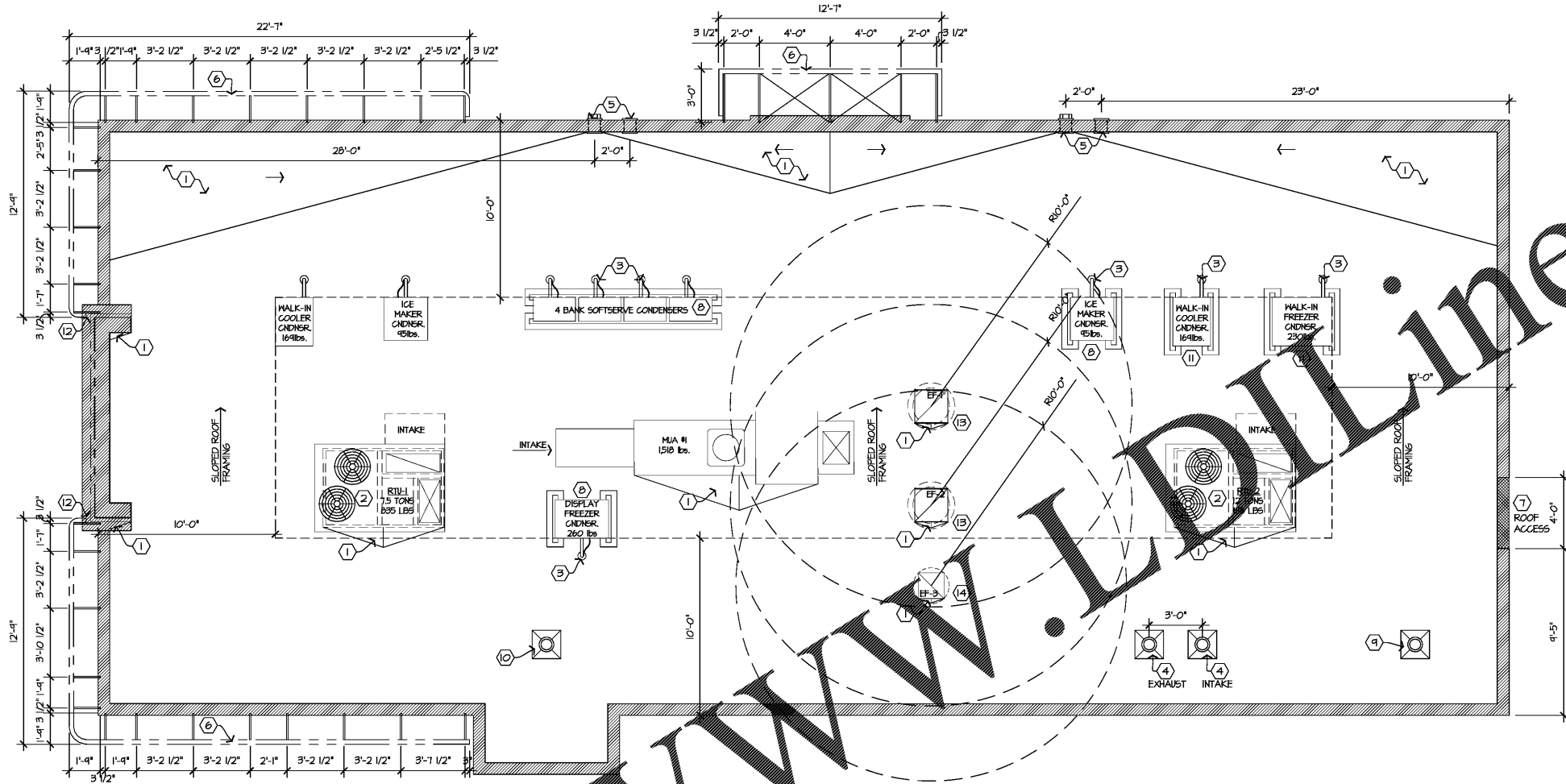


GENERAL NOTES

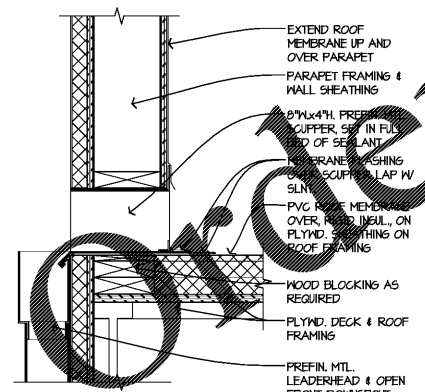
1. ROOFING CONTRACTOR SHALL BE RESPONSIBLE FOR ALL ROOF FLASHING AND COUNTER FLASHING, PROVIDING AND INSTALLING SNALES, SCUPPERS, GUTTERS, DOWNSPOUTS AND ANY OTHER ROOF DRAINAGE ITEMS AS REQUIRED.
2. ELECTRICAL AND GAS CONNECTIONS SHALL COME THRU HVAC CURBS. HVAC UNITS PROVIDED BY ELECTRICAL AND GAS LINES PREINSTALLED, CONNECTIONS BELOW ROOF WILL BE REQUIRED.
3. FLASHING SYSTEM (CAP, COUNTER AND CORNICE) AND FIELD PANELS AT MECHANICAL SCREEN ARE AVAILABLE THRU "NU LOOK EXTERIORS, INC."
4. COORDINATE LOCATION AND SIZE OF ALL ROOF TOP EQUIPMENT WITH MECHANICAL AND FRAMING PLAN.
5. GENERAL CONTRACTOR TO PROVIDE AND INSTALL A FLEXIBLE WALKWAY SYSTEM ON ROOFTOP FROM POINT OF ROOF ACCESS TO ALL ITEMS THAT REQUIRE SERVICE.
6. WHITE 50 MIL. PVC ROOF SYSTEM. NATIONAL PRICING AVAILABLE THROUGH DURALAST SEE NATIONAL VENDORS LIST.
7. TAN 50 MIL. PVC ROOF SYSTEM AT WALK-IN PROVIDED BY WALK-IN SUPPLIER INSTALLED BY G.C.

ROOF PLAN NOTES

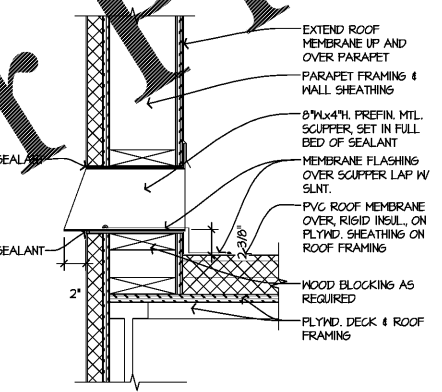
- 1 TAPERED ROOF INSULATION
- 2 HVAC EQUIPMENT & CURBS BY MECHANICAL CONTRACTOR, SEE 6/A2.2
- 3 PIPE PENETRATION AS REQUIRED, SEE 7/A2.2. SEE PLUMBING DRAWINGS FOR ADDITIONAL INFORMATION
- 4 WATER HEATER EXHAUST AND COMBUSTION AIR INTAKE. VERIFY ROOF PENETRATION REQUIREMENTS, SPACING, AND HEIGHTS WITH MANUFACTURERS REQUIREMENTS AND PREVAILING CODES. SEE PLUMBING DRAWINGS FOR ADDITIONAL INFORMATION
- 5 THRU WALL SCUPPER TO DOWNSPOUT AND THRU WALL OVERFLOW SCUPPER, SEE 2/A2.2 & 3/A2.2. ROOFING CONTRACTOR TO COORDINATE WITH EIFS AND ALPOLIC INSTALLERS TO PROVIDE A LEAKPROOF ASSEMBLY. WRAP AND SEALPROOF IN STRICT ACCORDANCE WITH MANUFACTURERS SPECIFICATIONS
- 6 PREFINISHED METAL EYEBROW AND CANOPY
- 7 ROOF ACCESS, SEE ELEVATION
- 8 CONDENSER, SEE 5/A2.2 & SEE MECH. DRAWINGS FOR INSTALLATION REQMTS & UNIT HEIGHTS. SHIM AS REQUIRED TO ENSURE UNITS ARE PLUMB AND LEVEL
- 9 PLUMBING VENT, SEE 6/A2.2. SEE PLUMBING DRAWINGS FOR ADDITIONAL INFORMATION
- 10 GREASE TRAP VENT, SEE PIPE PENETRATION DETAIL. SEE PLUMBING DRAWINGS FOR ADDITIONAL INFORMATION
- 11 ROOFTOP CONDENSERS AND LINE-SETS PART OF WALK-IN COOLER/FREEZER PACKAGE
- 12 MAINTAIN 3" CLEAR DIMENSION FROM END OF EYEBROW/CANOPY TO CHIMNEY FINISH OR EXTERIOR WALL FINISH
- 13 COOKING LINE EXHAUST FAN, SEE 6/A2.2 & MECH. DRAWINGS FOR INSTALLATION REQMTS & UNIT HEIGHTS. MUST MAINTAIN 10'-0" CLEARANCE FROM ALL AIR INTAKE
- 14 RESTROOM EXHAUST FAN, SEE 6/A2.2 & MECH. DRAWINGS FOR INSTALLATION REQMTS & UNIT HEIGHTS



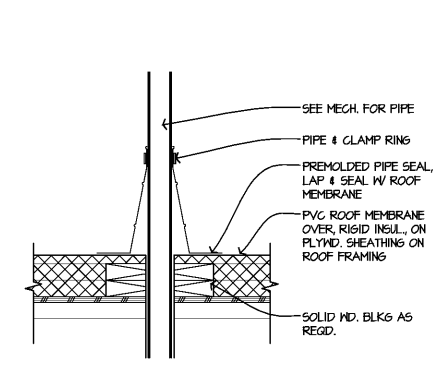
1 ROOF PLAN
A2.2 SCALE: 1/4" = 1'-0"



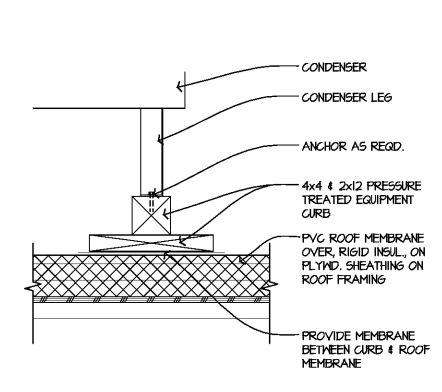
2 SCUPPER DETAIL
A2.2 SCALE: 1 1/2" = 1'-0"



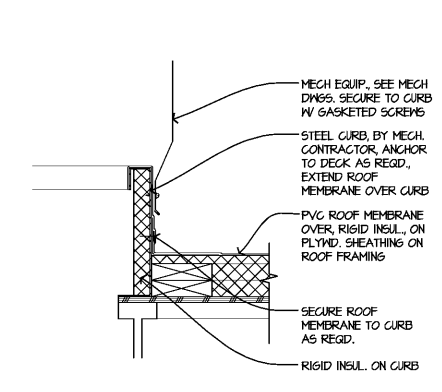
3 OVERFLOW SCUPPER DTL.
A2.2 SCALE: 1 1/2" = 1'-0"



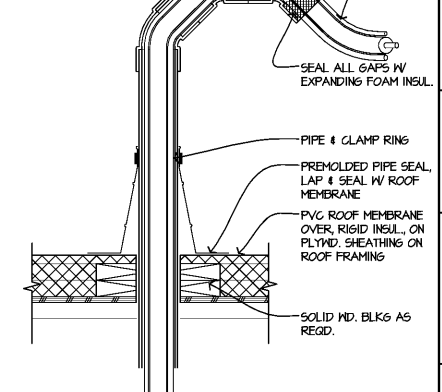
4 PIPE PENETRATION DTL.
A2.2 SCALE: 1 1/2" = 1'-0"



5 CONDENSER CURB DTL.
A2.2 SCALE: 1 1/2" = 1'-0"



6 MECH. CURB DETAIL
A2.2 SCALE: 1 1/2" = 1'-0"



7 REF. PIPE PENETRATION DTL.
A2.2 SCALE: 1 1/2" = 1'-0"

NEW BUILDING FOR:

 INTERSECTION OF WIS BLVD & ALABAMA AVENUE
 BREVARD, GA 31110
 PARCEL ID: Z52 0065
 AMERICAN DAIRY QUEEN
 MINNEAPOLIS, MN U.S.A.
 REGISTERED U.S. PATENT OFFICE. AMERICAN DAIRY QUEEN CORPORATION. THIS DRAWING, ITS DESIGN DETAIL AND INVENTION ARE THE PROPERTY OF AMERICAN DAIRY QUEEN INC. (ADQ) AND SHALL NOT BE COPIED IN ANY MANNER NOR DISCLOSED TO ANY OUTSIDE PARTY WITHOUT ADQ CONSENT.

STATE OF GEORGIA

 JOHN S. ODUM
 REGISTERED ARCHITECT
 REGISTERED NO. 66662
 11-01-18

GEORGIA ARCHITECT LICENSE
 NUMBER RA014022

SPECIAL NOTICES
 In the event the client consents to, allows, authorizes or approves of changes to any plans, specifications or other construction documents, and these changes are not approved in writing by the design professional, the client recognizes that such changes and the results thereof are not the responsibility of the design professional. Therefore, the client agrees to release the design professional from any liability arising from the construction, use or result of such changes. In addition, the client agrees to the fullest extent permitted by law, to indemnify and hold the design professional harmless from any damage, liability or cost (including reasonable attorney's fees and costs of defense) arising from such changes. Copyright © 2018 by John S. Odum, Architect. All rights reserved. No part of this drawing may be reproduced by photocopy or by any other means, or stored, processed, or transmitted in or by any computer or other systems without the prior written permission of the Architect.

ISSUE DATE: 11-01-18
 REVISION DATE: 11-01-18 ORIGINAL ISSUE

ROOF PLAN

SHEET NUMBER:
A2.2