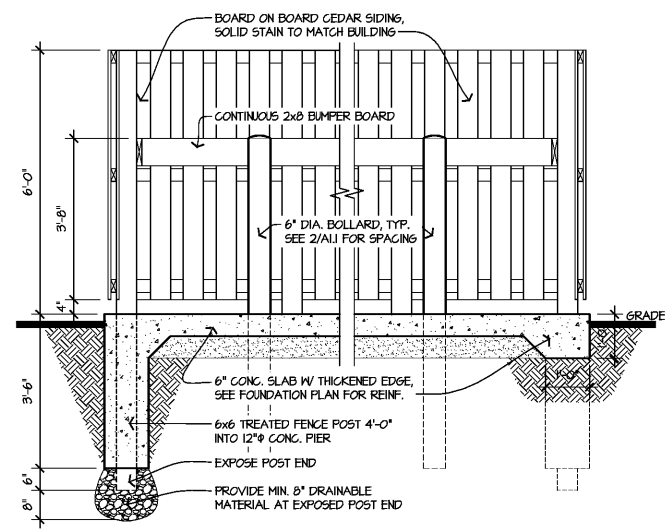




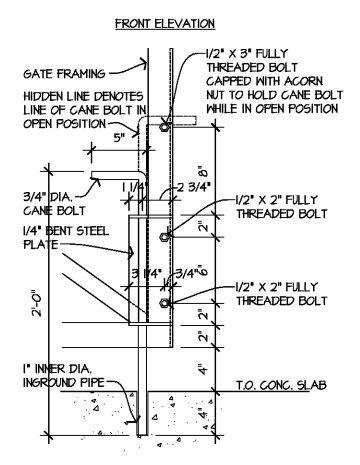
AMERICAN DAIRY QUEEN MINNEAPOLIS, MN U.S.A. REGISTERED U.S. PATENT OFFICE. AMERICAN DAIRY QUEEN CORPORATION. THIS DRAWING, ITS DESIGN DETAIL AND INVENTION ARE THE PROPERTY OF AMERICAN DAIRY QUEEN INC. (ADQ) AND SHALL NOT BE COPIED IN ANY MANNER NOR DISCLOSED TO ANY OUTSIDE PARTY WITHOUT ADQ CONSENT.

SITE PLAN NOTES

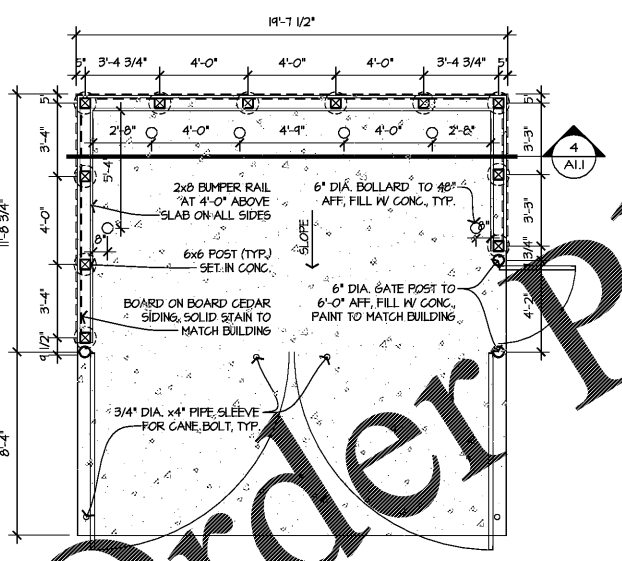
- REFER TO DRAWINGS PREPARED BY THE CIVIL ENGINEER, ELECTRICAL & PLUMBING ENGINEER FOR FURTHER CLARIFICATION.
- 1 PARKING LOT STRIPING COLOR TO BE 'HIGHWAY WHITE'. HANDICAPPED STALL PICTOGRAM COLOR TO BE BLUE.
- 2 TRASH ENCLOSURE SEE 2/A1.1 & 3/A1.1
- 3 ACCESSIBLE PARKING SIGNAGE, SEE DETAIL 8/A1.2
- 4 LANDSCAPING TO BE BY OWNER. SEE CIVIL DRAWINGS AND SPECIFICATIONS FOR STRIPING, STOCKPILING AND PLACEMENT OF TOPSOIL.
- 5 DECORATIVE PATIO LIGHTING, SEE DETAIL 9/A1.2, ELECTRICAL PLANS, AND ENLARGED PATIO PLAN FOR FURTHER CLARIFICATION.
- 6 CONCRETE PATIO: PATIO FINISH TO BE BROOM FINISHED CONCRETE WITH TOOLED JOINTS MAX @ 8'-0" EA. MAY TYPICAL, SLOPE AWAY FROM BUILDING 1/8" PER FOOT. CONCRETE PATIO IS TO BE COLOR INFREGATED CONCRETE. CONTRACTOR TO PROVIDE COLOR SAMPLES (BROWN CONCRETE) TO OWNER PRIOR TO INSTALLATION.
- 7 NEW RETAINING WALL AT THIS LOCATION. SEE CIVIL DRAWINGS.
- 8 CURB RAMP, SEE CIVIL DETAILS
- 9 PATIO FENCE RAILING, SEE DETAIL 4/A1.3
- 10 LIGHT POLE, SEE DETAIL 14/A1.2 AND ELECTRICAL SITE PLAN
- 11 NEW UNDER GROUND GREASE INTERCEPTOR, SEE CIVIL AND PLUMBING DRAWINGS FOR FURTHER CLARIFICATION.
- 12 MENU BOARD SEE 10/A1.2 & SHEET A3.3
- 13 SPEAKER SEE DETAIL 11/A1.2
- 14 CLEARANCE SIGN SEE 13/A1.2
- 15 LOOP INDUCTION SYSTEM SEE 1/A1.2 & 3/A1.2
- 16 PREVIEW BOARD, SEE DETAIL 12/A1.2 & SHEET A3.3
- 17 CONCRETE SIDEWALK AND CURB. SEE CIVIL DRAWINGS
- 18 Pylon sign, SEE SHEET A3.3 FOR SIGNAGE DETAILS AND MINIMUM SET BACK REQUIREMENTS.
- 19 EXISTING ASPHALT DRIVE TO REMAIN. CONTRACTOR IS TO RESEAL THE EXISTING ASPHALT
- 20 4" THICK CONCRETE PAD AT THIS LOCATION FOR FUTURE STORAGE AREA, SEE SITE ELECTRICAL DRAWINGS.
- 21 (BMO) SYMBOL INDICATES EQUIPMENT ITEM NUMBER. SEE SHEET F-2 FOR DESCRIPTION
- 22 (O) SYMBOL INDICATES PARKING STALL QUANTITY



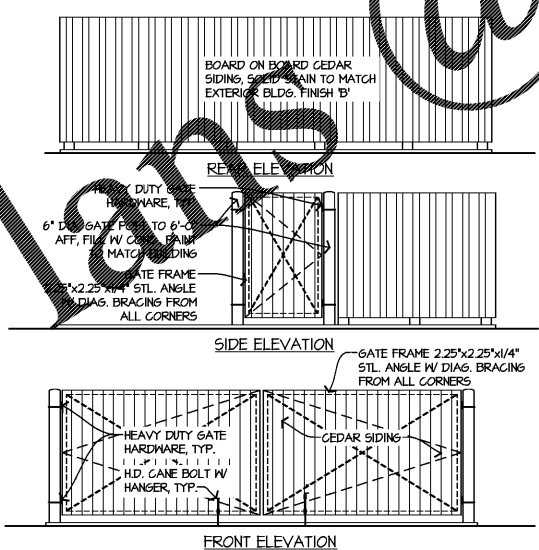
4 TRASH ENCLOSURE SECTION
A1.1 SCALE: 1/2" = 1'-0"



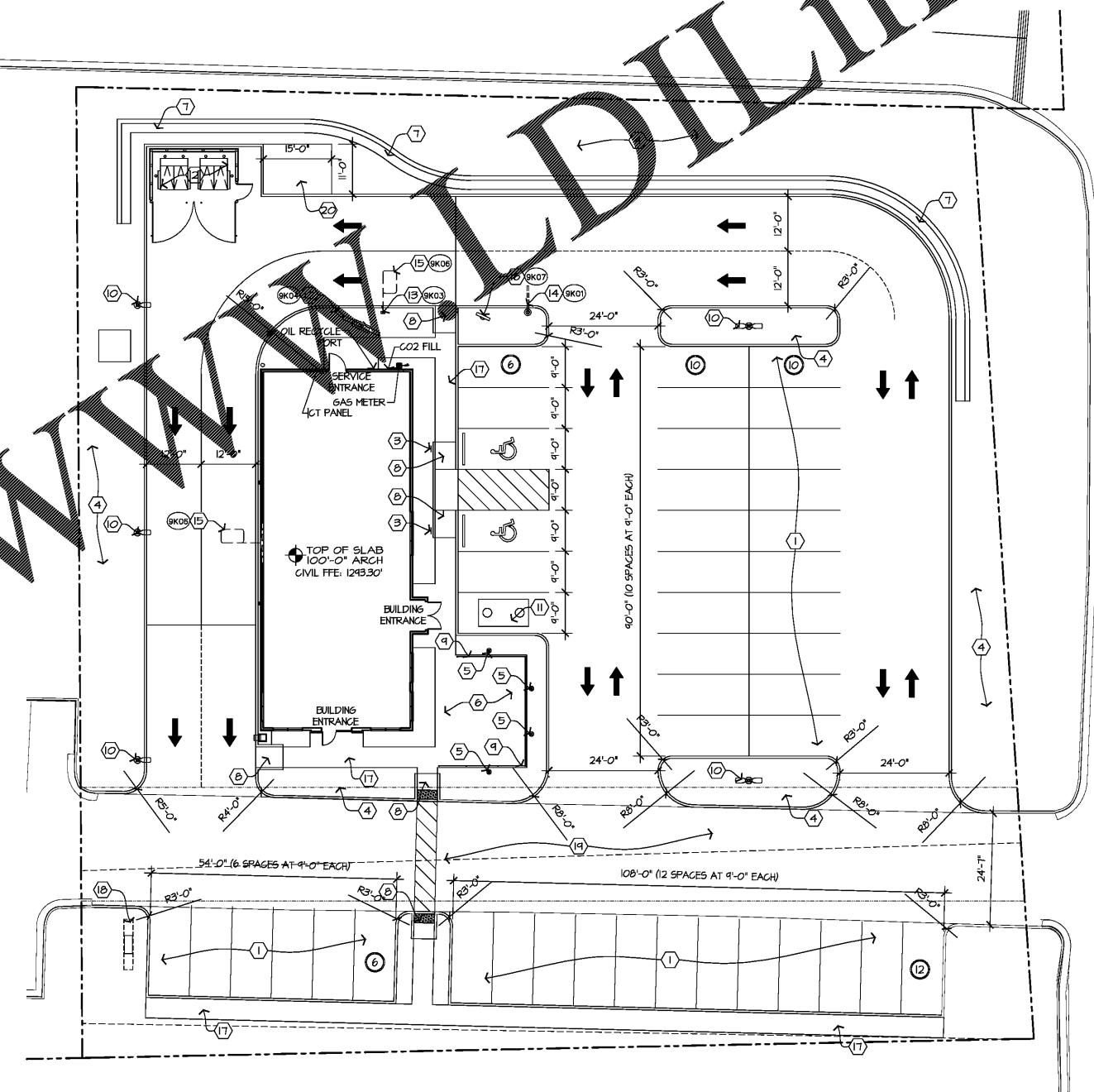
5 CANE BOLT DETAIL
A1.1 SCALE: 1-1/2" = 1'-0"



7 TRASH ENCLOSURE PLAN
A1.1 SCALE: 1/4" = 1'-0"



3 TRASH ENCLOSURE ELEVATIONS
A1.1 SCALE: 1/4" = 1'-0"



1 ARCHITECTURAL SITE PLAN
A1.1 SCALE: 1/16" = 1'-0"



GEORGIA ARCHITECT LICENSE NUMBER RA014022

SPECIAL NOTICES: In the event the client consents to, allows, authorizes or approves of changes to any plans, specifications or other construction documents, and these changes are not approved in writing by the design professional, the client recognizes that such changes and the results thereof are not the responsibility of the design professional. Therefore, the client agrees to release the design professional from any liability arising from the construction, use or result of such changes. In addition, the client agrees to the fullest extent permitted by law, to indemnify and hold the design professional harmless from any damage, liability or cost (including reasonable attorneys fees and costs of defense) arising from such changes. Copyright © 2018 by John S. Odum, Architect. All rights reserved. No part of this drawing may be reproduced by photocopy or by any other means, or stored, processed, or transmitted in or by any computer or other systems without the prior written permission of the Architect.

ISSUE DATE: 11-01-18

REVISION DATE: 11-01-18 ORIGINAL ISSUE

SITE PLAN & DETAILS

SHEET NUMBER: A1.1